



MSI GS63VR 6RF Stealth Pro WiFi Card Replacement

If you're having connectivity issues with your...

Written By: Nabil Ranjbar



INTRODUCTION

If you're having connectivity issues with your Stealth Pro, or simply want to upgrade your connectivity, this guide will walk you through the replacement process.

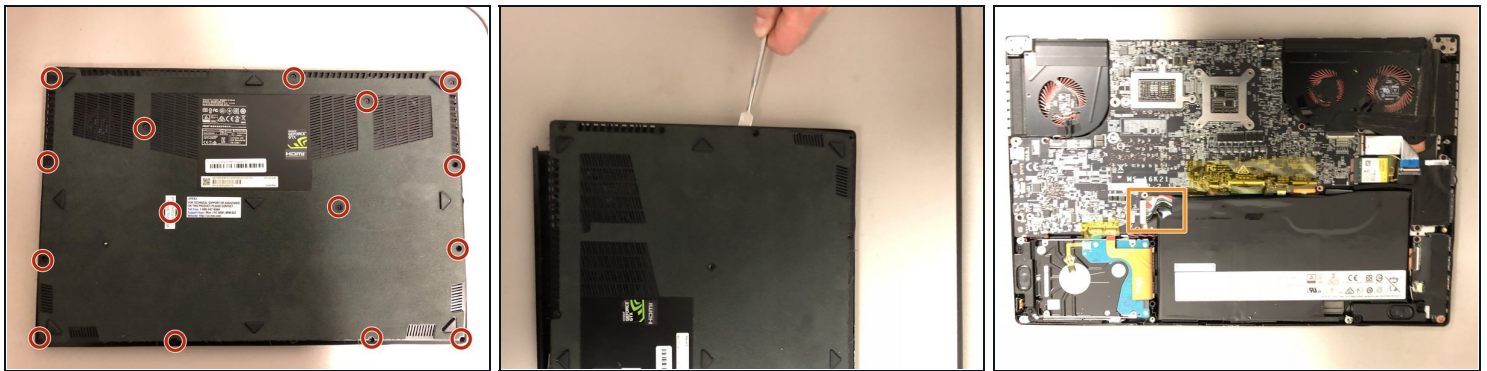
TOOLS:


Heavy-Duty Spudger (1)

Phillips #00 Screwdriver (1)

Tweezers (1)

Step 1 — Wi-Fi Card

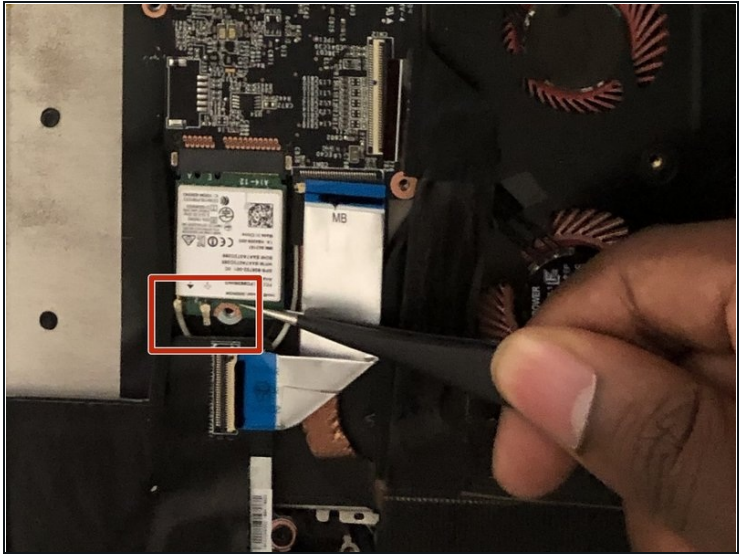
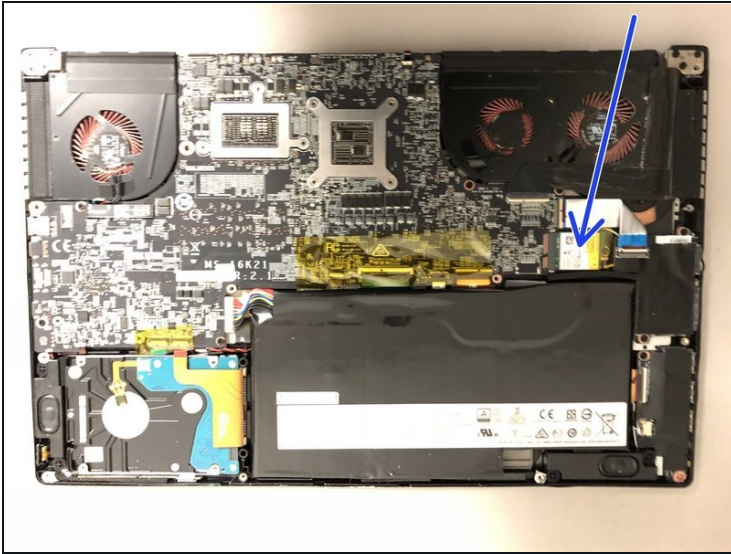


 First, turn off the laptop and make sure it is unplugged from power to avoid injury.

- Unscrew the 15 screws on the bottom panel of the computer using a Phillips #00 screwdriver.
- Lift open the back cover with a plastic spudger.
- Gently lift the back cover away from computer. Make sure nothing is attached.
- Unplug the battery cable from the motherboard to prevent a ground fault.

 Too much pressure from the spudger can break the clips that secure the back panel, but some flex is not dangerous.

Step 2



- Unscrew the single screw from the Wifi card using a Phillips #00 screwdriver.
- Apply upward pressure on the cables using a plastic tweezers.
- Using the plastic tweezers, carefully grab and gently wiggle the Wifi card out of its socket.
- Gently pull the card upward from the slot.

⚠ The Wi-Fi cables can be easily damaged when removing or replacing the connectors. Please take extra care when performing these tasks
