



# Lenovo Thinkpad T410i Webcam Replacement

How to replace and reinstall the webcam for the Lenovo Thinkpad T410i.

Written By: Harsh Patel



# INTRODUCTION

This guide will show the removal / replacement process for the webcam above the LCD if damaged.

## Guide Notes

- You should only follow this guide after ruling out software issues from the list of problems and performing an exhaustive troubleshooting. Only replace your webcam if you are sure that the component is physically damaged. If your webcam stopped working after a liquid spillage or after crushing the webcam area, you may have to replace it.
- Please look up and try [troubleshooting](#) solutions to common webcam software problems, such as missing or outdated drivers, disabled webcam, etc.
- The webcam can be removed **without** first removing the LCD screen, although the screen is removed in this guide's pictures.



## TOOLS:

- [Spudger](#) (1)
- [Phillips #0 Screwdriver](#) (1)



## PARTS:

- [Lenovo Thinkpad T410i Screen Bezel](#) (1)
- [Lenovo Thinkpad T410i Webcam](#) (1)

## Step 1 — Screen Bezel



- Use a spudger to remove the plastic covers from the LCD screen.

## Step 2



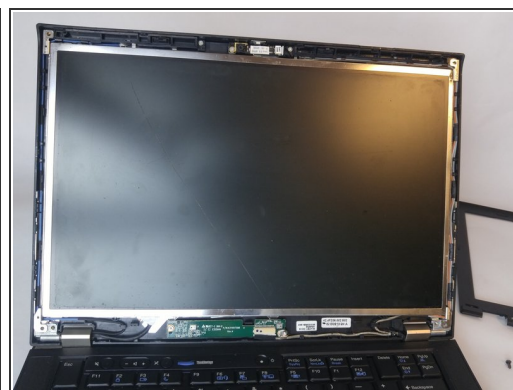
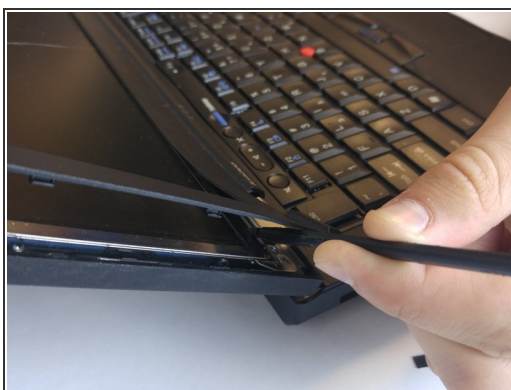
- Remove the two 6.0mm screws on each side using Philips #0 head screwdriver as shown in the picture.

## Step 3



- Use a spudger to separate the bezel of the LCD screen.

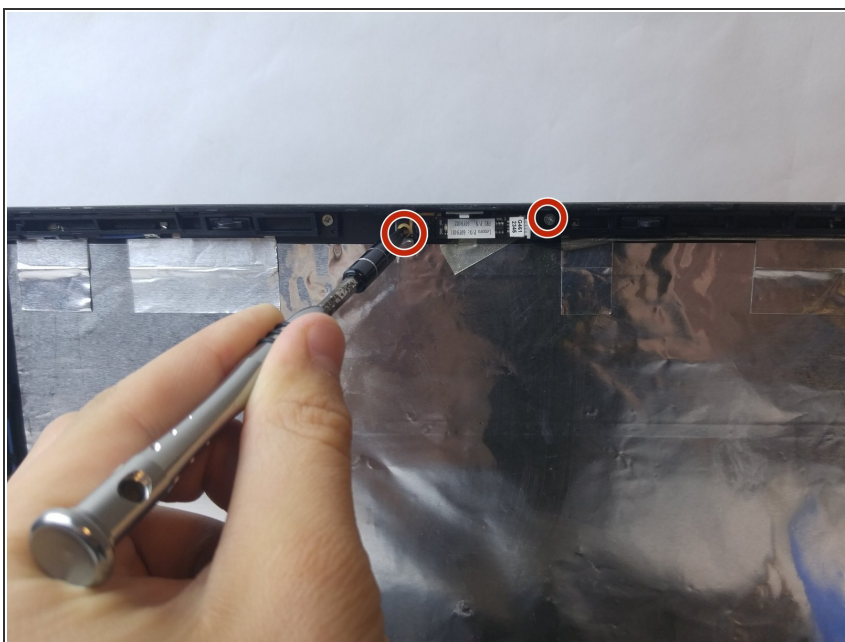
## Step 4



- Continue along the edges lifting up and prying off the plastic LCD bezel.

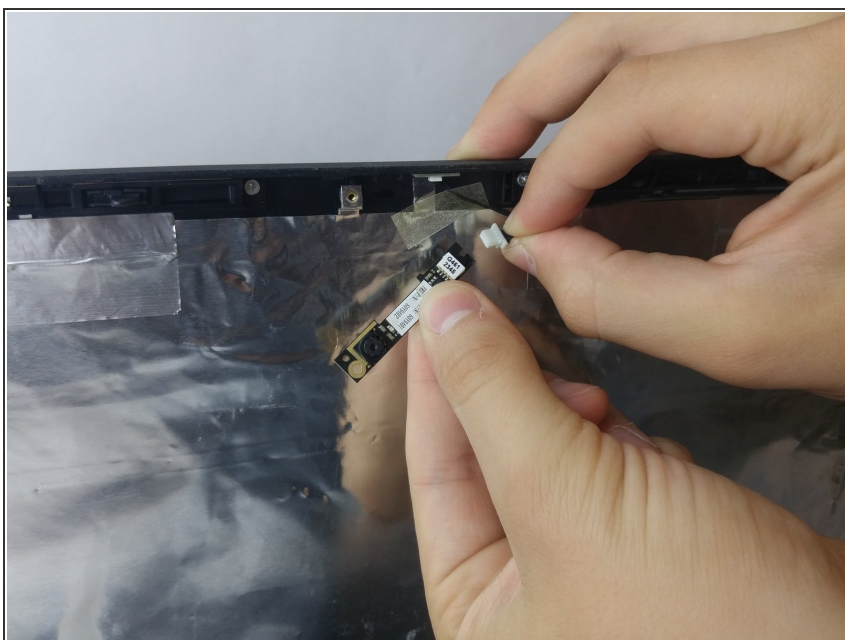


## Step 5 — Webcam



- Remove two 3.5mm Phillips #0 screws.

## Step 6



- Carefully detach the connector from webcam assembly.
- Remove the webcam from the device.

To reassemble your device, follow these instructions in reverse order.