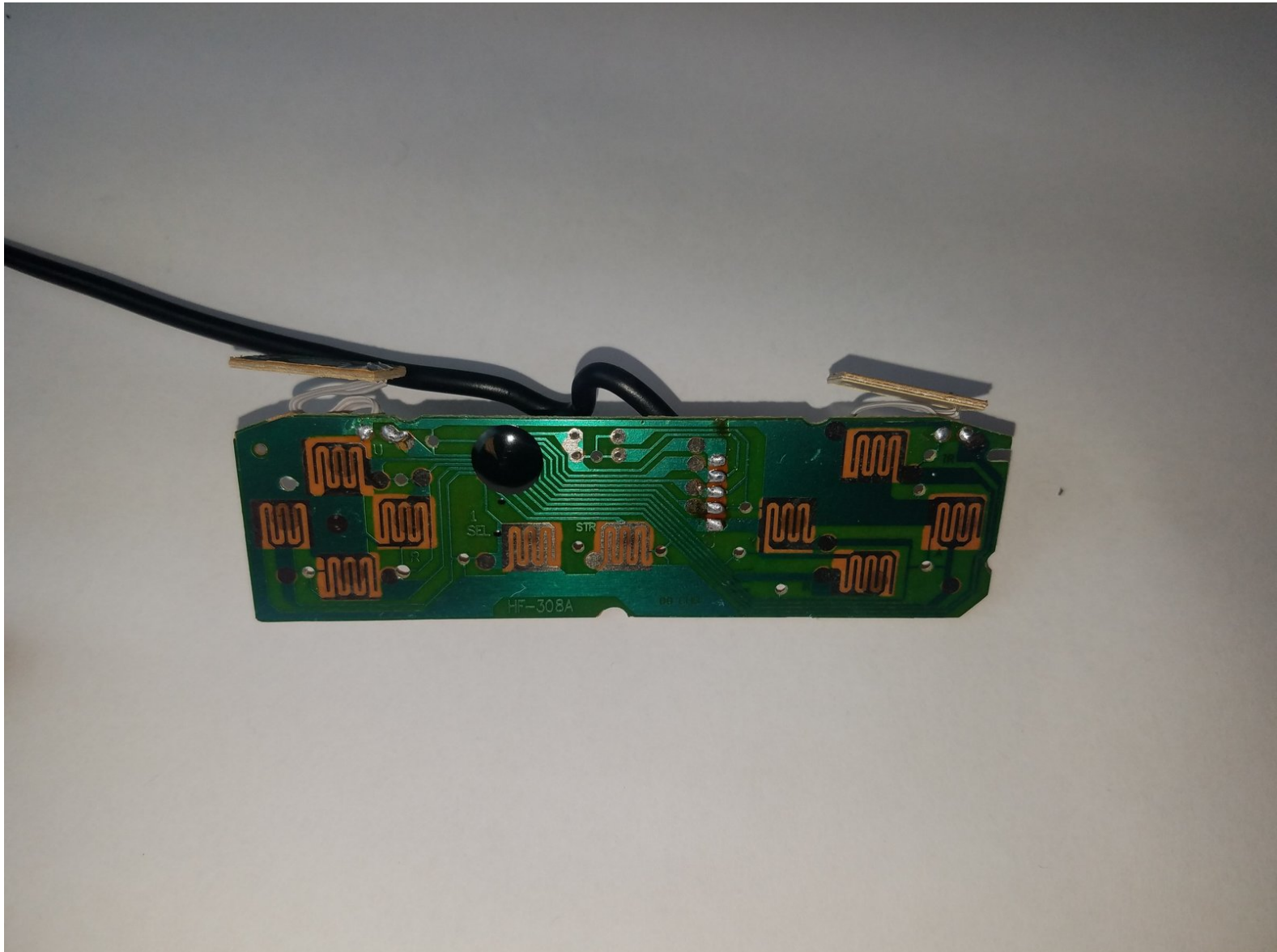




Retro-Bit Retro Duo Circuit Board in Controller(s) Replacement

Retro-Bit Retro Duo Game Console controller(s) circuit board(s) replacement.

Written By: Evelyn



INTRODUCTION

If your controller(s) malfunction, you can replace the circuit boards. You only need a Phillips #1 screwdriver.



TOOLS:

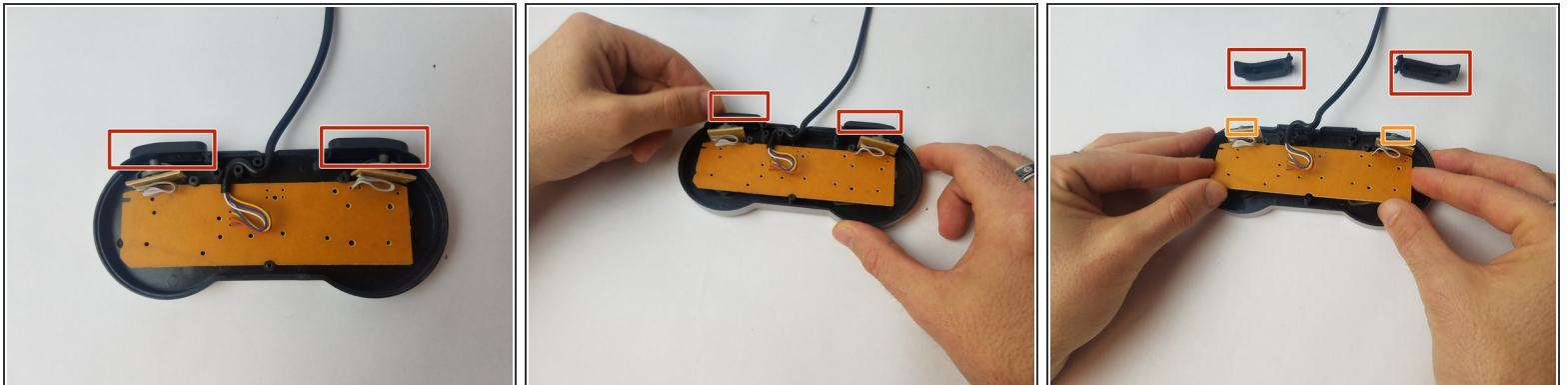
- [Phillips #1 Screwdriver](#) (1)
-

Step 1 — Circuit Board in Controller(s)



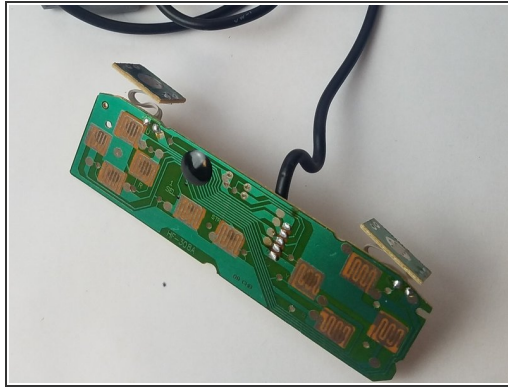
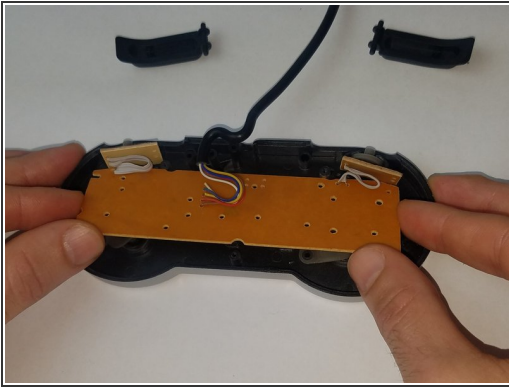
- With the controller on its face, remove the five 6 mm Phillips #1 screws.
- After removing the screws, carefully lift the controller casing .

Step 2



- Pinch the top and bottom of the shoulder buttons and lift them out.
- Below each shoulder button, there are small elastic pads. To remove them, pinch the pads and slide them out.
- ① Removing the elastic pads allows easier circuit board access.

Step 3



- Carefully lift the circuit board from the controller case.

To reassemble your device, follow these instructions in reverse order.