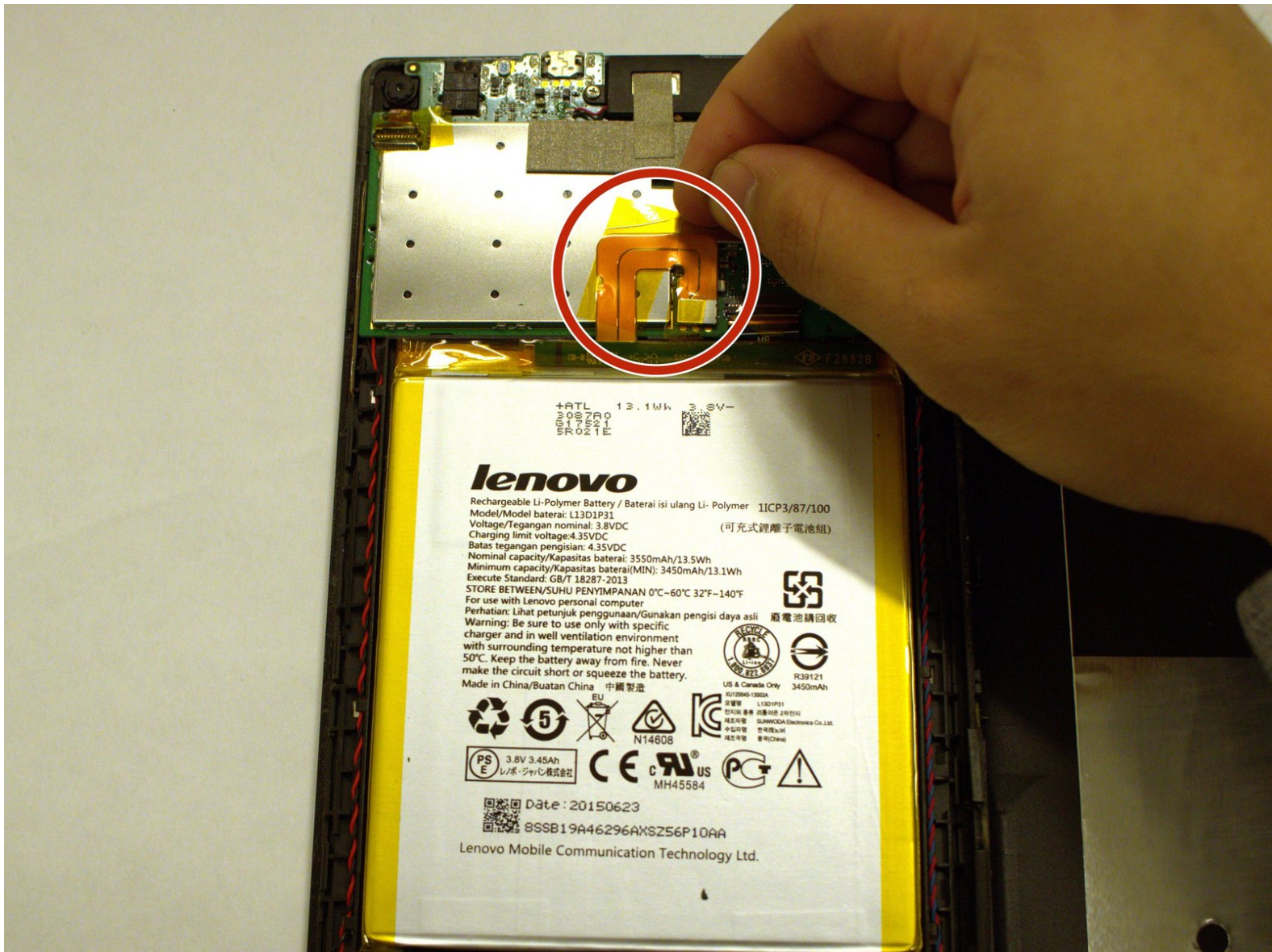




Lenovo Tab 2 A7-20F Battery Replacement

This guide will provide step by step...

Written By: Thanh



INTRODUCTION

This guide will provide step by step instructions on how to replace the battery in your Lenovo Tab 2 A7-20F.

Note: Before removing the battery, make sure that the device is shut down completely and that the charger is disconnected. Make sure that your hands are dry and that you have discharged any built up static charge by touching a good ground source. This will help to avoid damaging any electric components.



TOOLS:

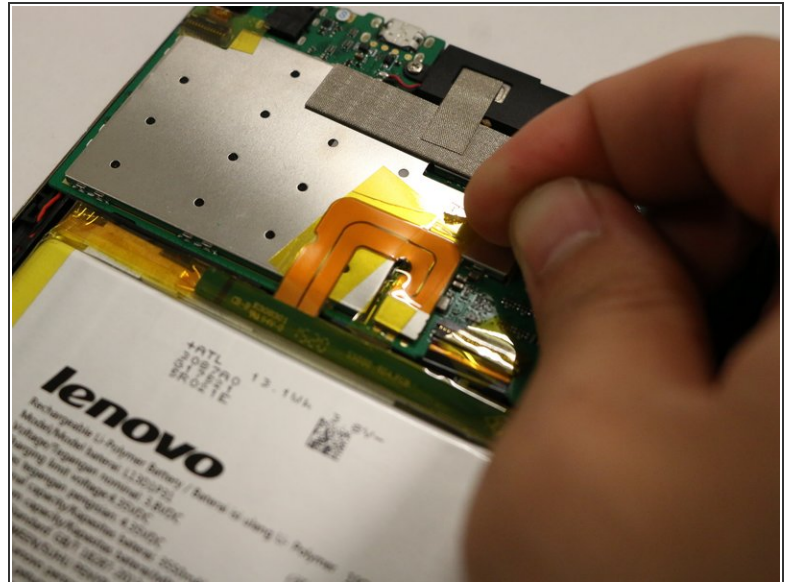
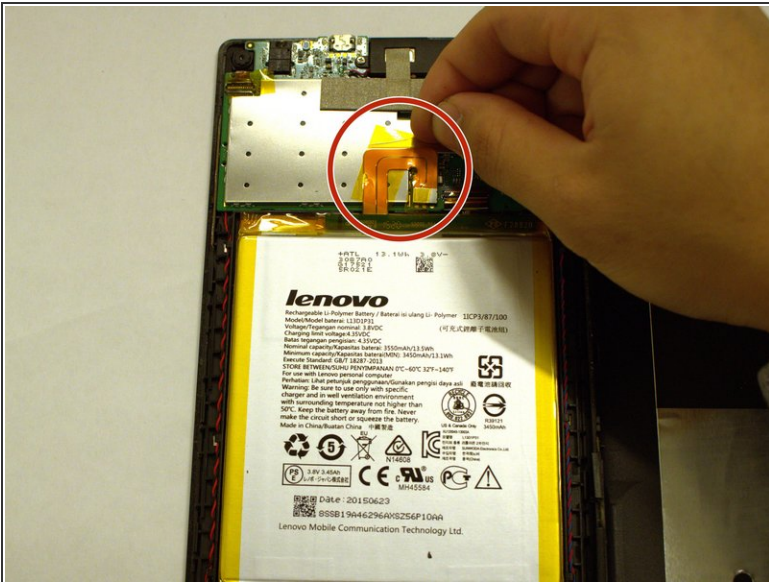
- [Metal Spudger](#) (1)
 - [Spudger](#) (1)
-

Step 1 — Case



- Starting at any point along the seam of the case carefully pry it open with the metal spudger, slowly working your way around the outside until the case can come apart.

Step 2 — Battery



i The battery is connected to the motherboard by the thin wire shown here.

- Pull up gently on the yellow tape to access the connector.

Step 3



- Gently detach the connector from the motherboard by pulling up on it.

Step 4



- i** There is double-sided tape inside the case.
- Use the spudger tool to loosen the bond of the adhesive from the double sided tape.
 - Separate the battery from the case.

To reassemble your device, follow these instructions in reverse order.