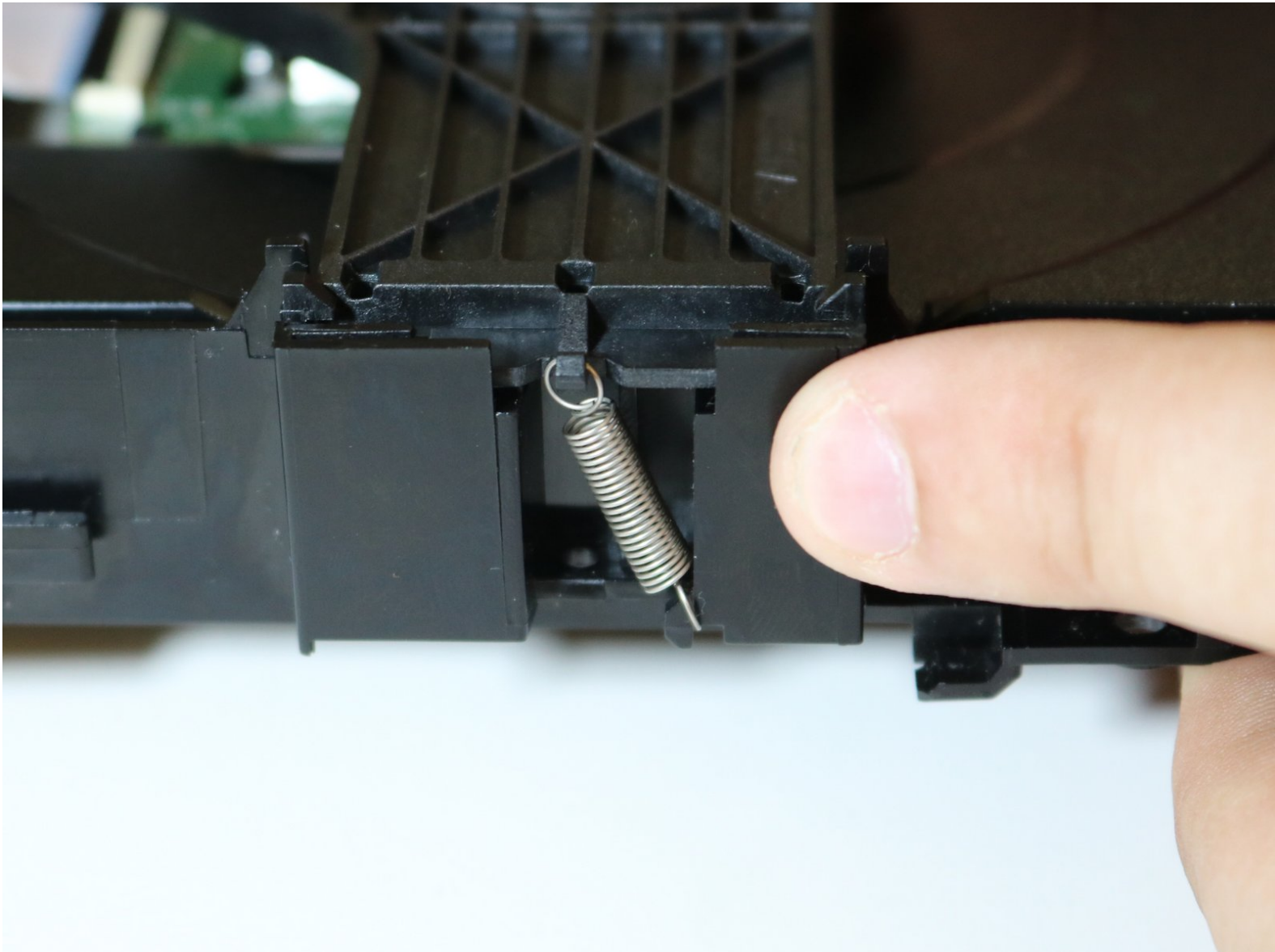




Samsung BD-F7500 Blu-ray Player Disc Reader Replacement

This guide will help teach you how to replace the disk reader.

Written By: James McMichael



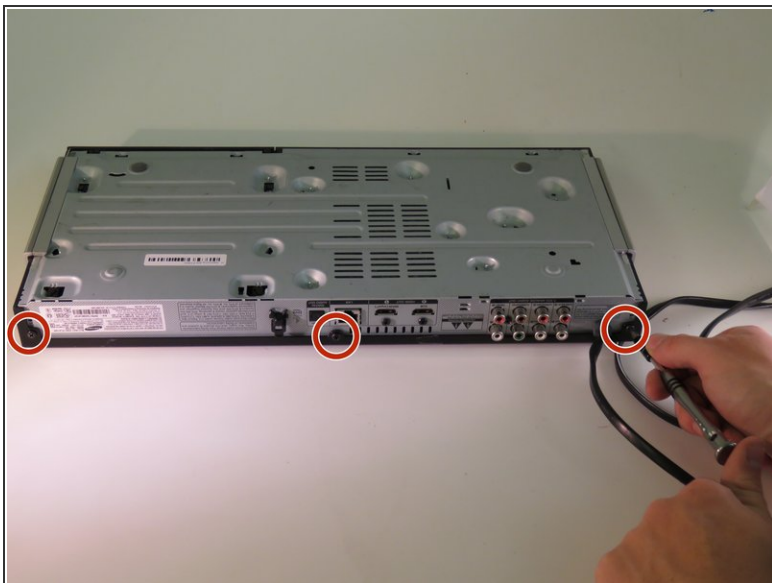
INTRODUCTION

This guide will open the device and remove the disc tray. From within the disc tray the disc reader will be removed.

TOOLS:

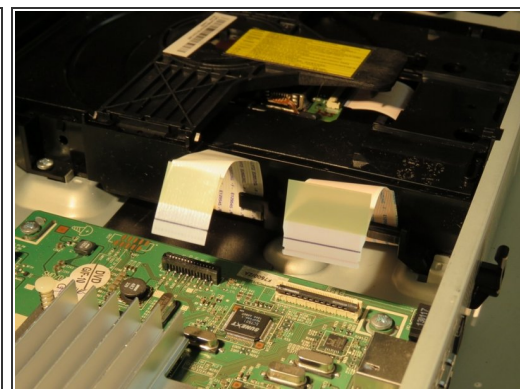
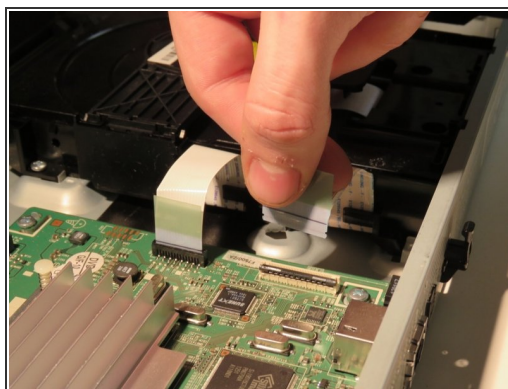
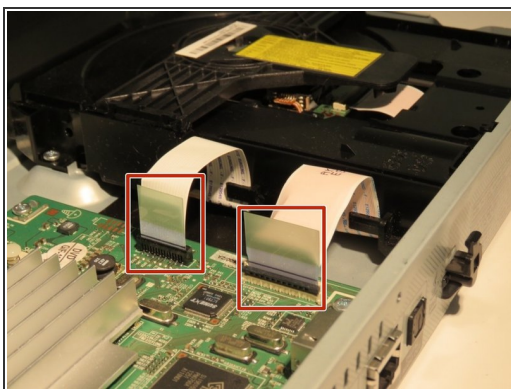
- [Metal Spudger](#) (1)
 - [Phillips #1 Screwdriver](#) (1)
-

Step 1 — Disc Tray



- Use a Phillips head #J1 screwdriver to remove all three (3) 10 mm screws.

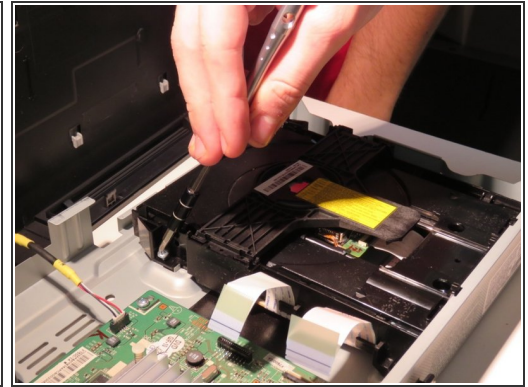
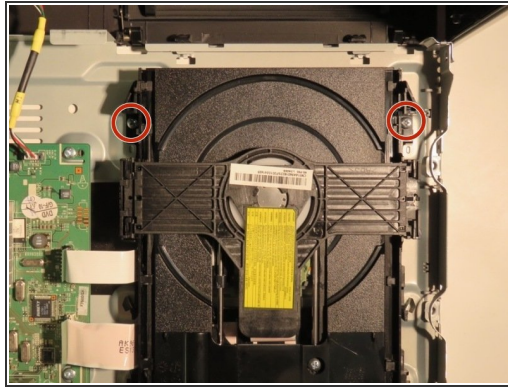
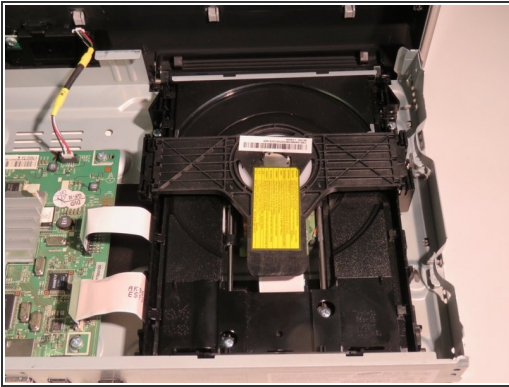
Step 2



- To remove each ribbon cable, firmly grip the hard plastic tab attached to the base and pull upwards.

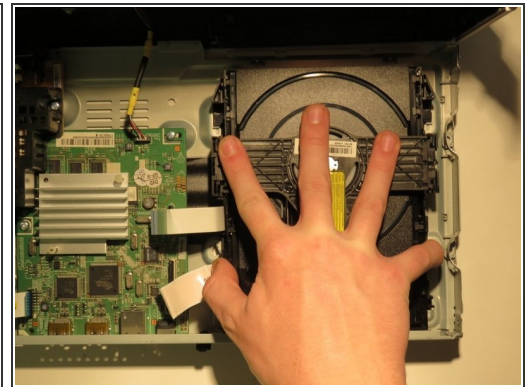
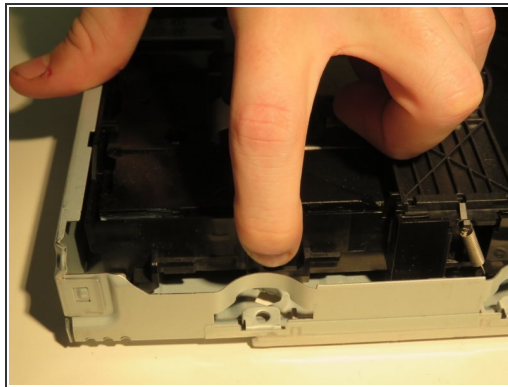
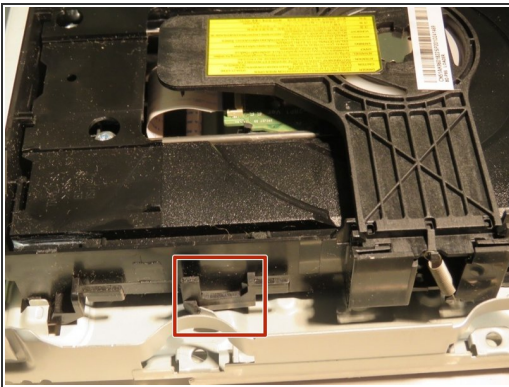
⚠ Be careful not to tear the ribbon cables.

Step 3



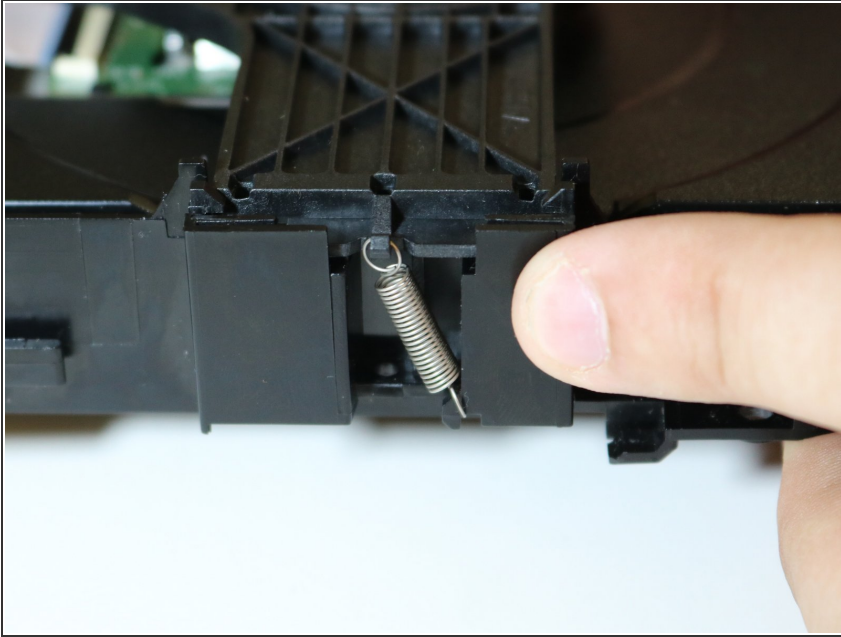
- Using a screwdriver with a #J1 bit, remove the two (2) 7 mm screws.

Step 4



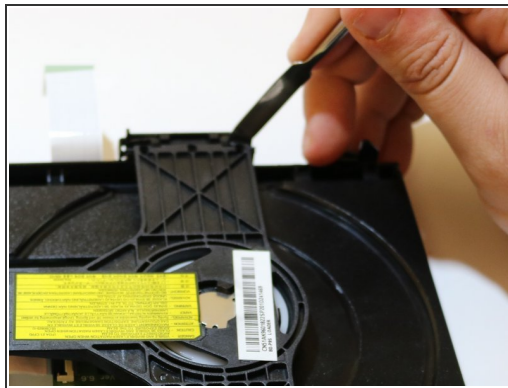
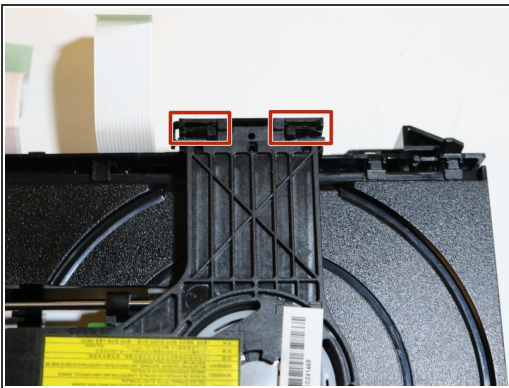
- Locate the two black tabs on each side of the disc tray. The second tab is located in the same location on opposite side of marked tab.
- While pinching both tabs, slightly push the disc tray towards the front of the device, and lift the disc tray out.

Step 5 — Disc Reader



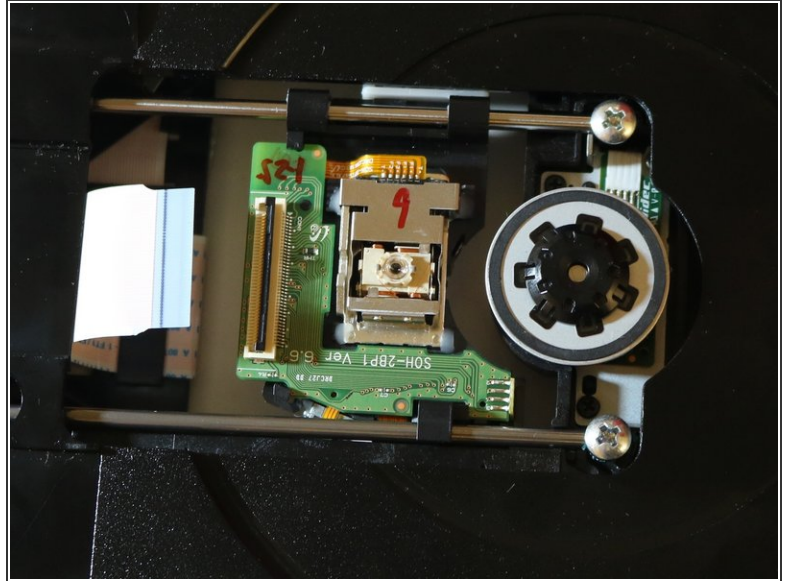
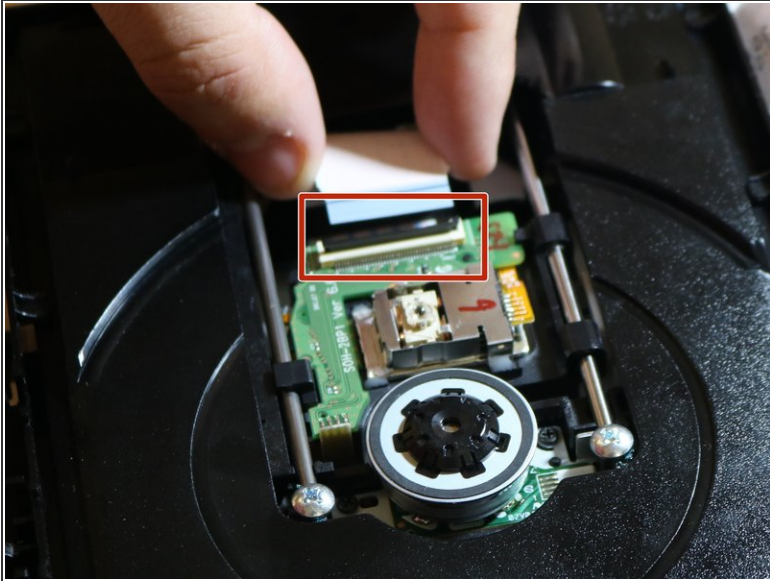
- Remove spring on the side of the disc tray by carefully pulling it off its hook.

Step 6



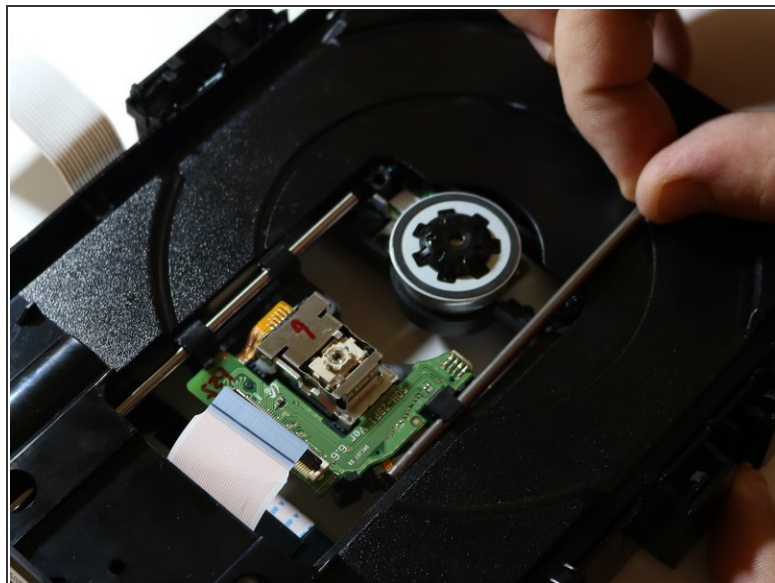
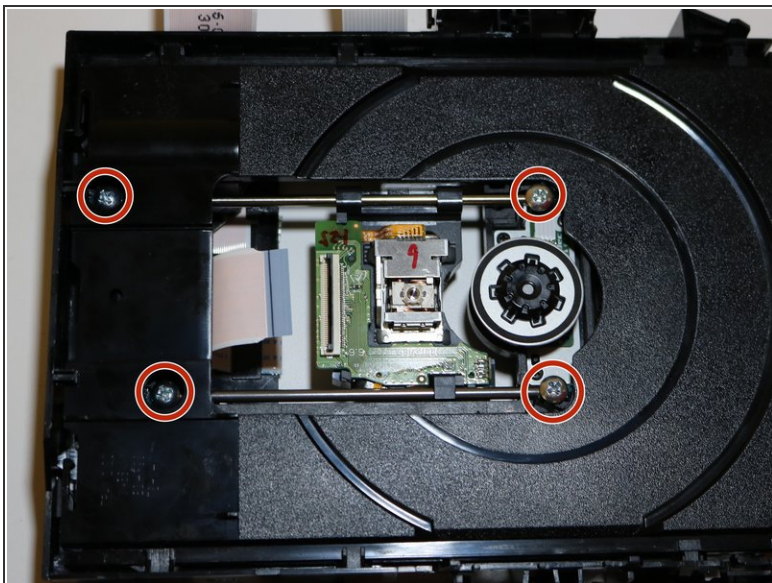
- Locate the two black tabs, found at the end of the black bar across the disc tray. The tabs are located on the opposite side of the spring.
- While simultaneously pushing both tabs in, lift up the black plastic bar.
- ⓘ Using a spudger, it is helpful to push in the tab as well as using the spudger as a lever.
- ⓘ The tabs are weak, constant pressure is the key, not overpowering force.

Step 7



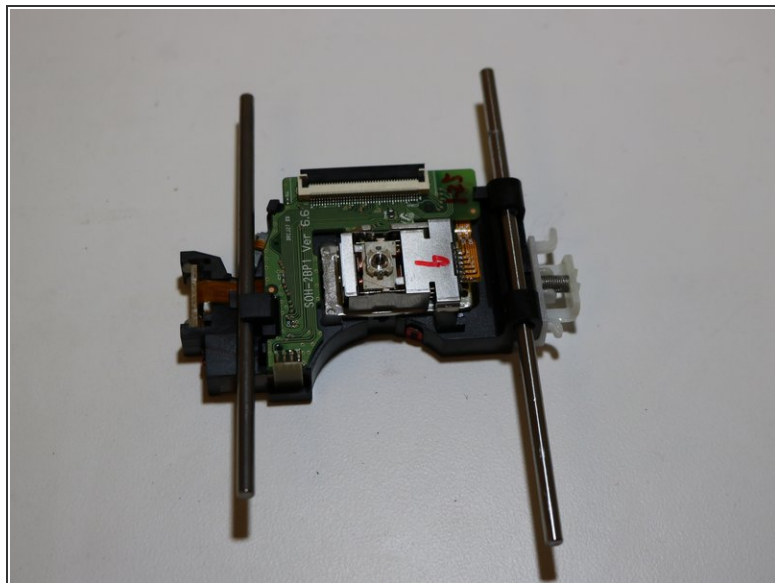
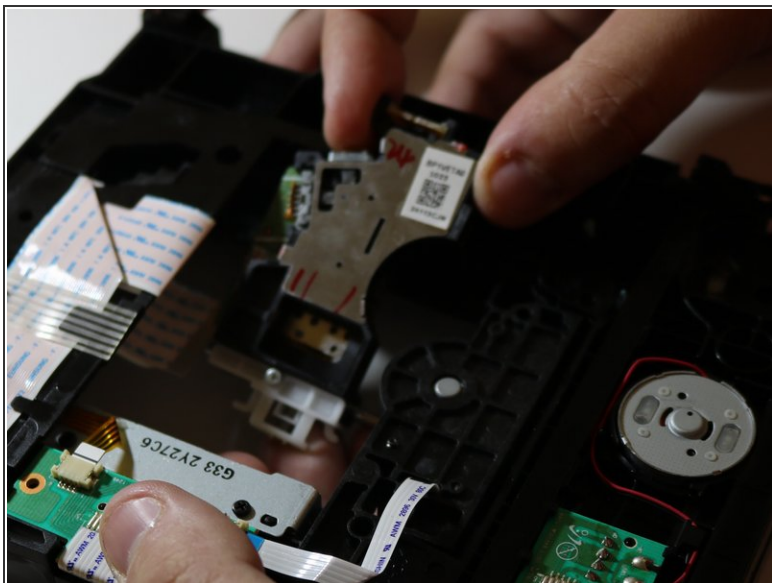
- To remove the ribbon cable, flip down the black bar located on the connector.

Step 8



- Remove four (4) 10 mm screws using a phillips head #J1 screwdriver.
- Remove the small metal bars by pulling it outwards.
- ⓘ The metal bars should have some wiggle room allowing it to be pulled out. It may be handy to push it up from underneath the disc tray.

Step 9



- Flip the disc tray over so the laser points downward.
- Pull the disc reader out of the disc tray.
- ⓘ The laser may need to be turned on its side as its pulled out.

To reassemble your device, follow these instructions in reverse order.