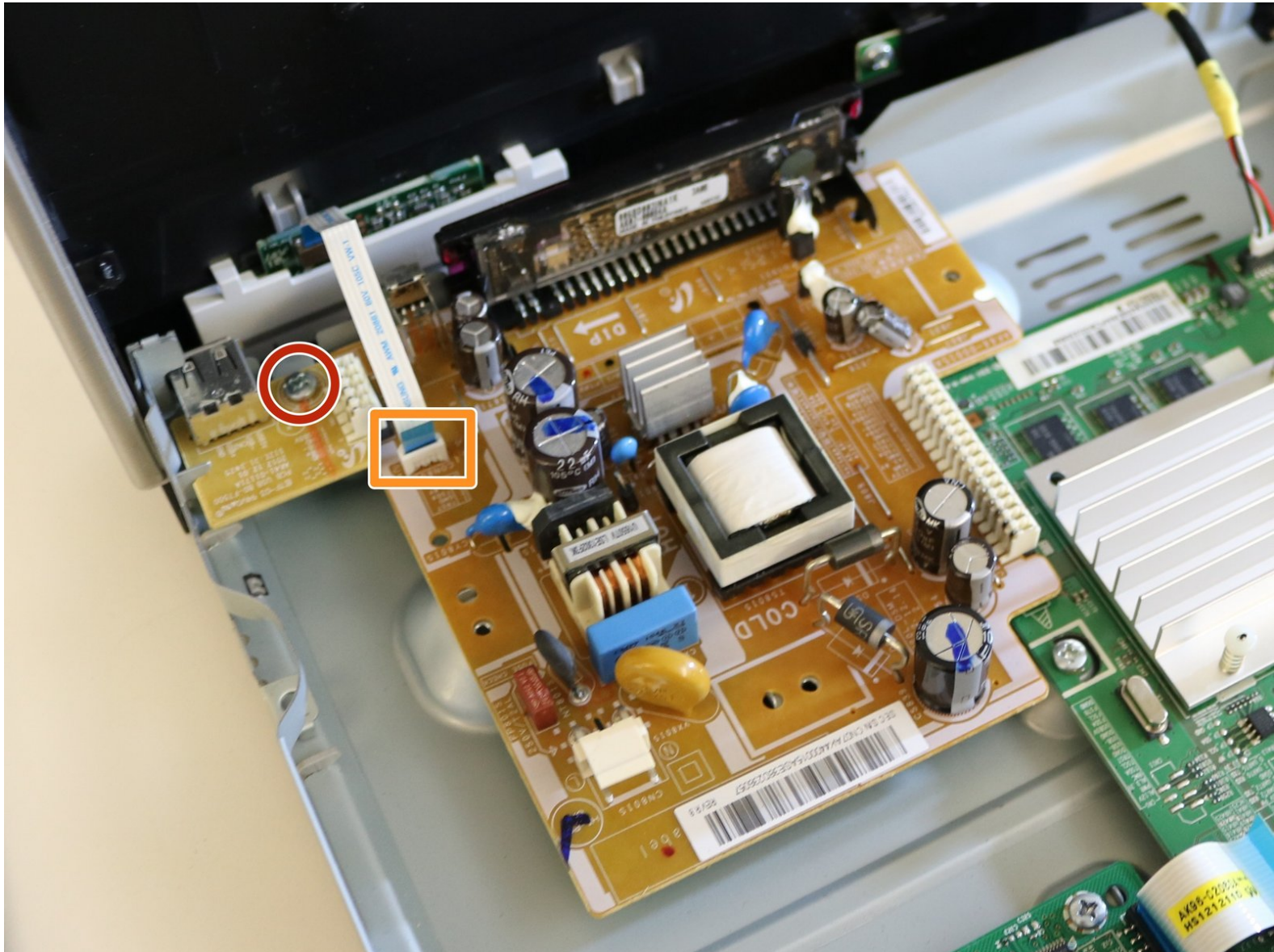




Samsung BD-F7500 Blu-ray Player Power Board Replacement

This guide will teach you how to replace the power board

Written By: James McMichael



INTRODUCTION

When dealing with a power board it is important to remember that all capacitors are charged until proven otherwise. Proceed with caution as capacitors can hold a strong charge and shock you when touched.

TOOLS:

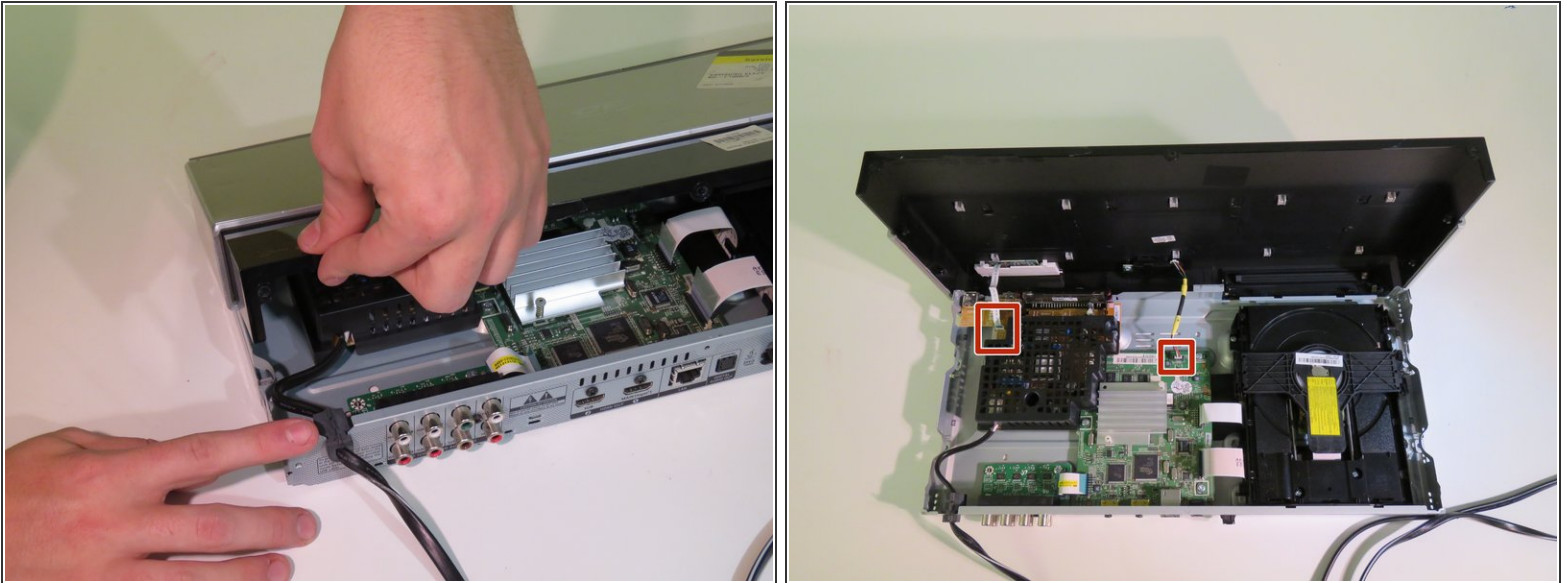
- [Metal Spudger](#) (1)
 - [Phillips #1 Screwdriver](#) (1)
-

Step 1 — Power Cord



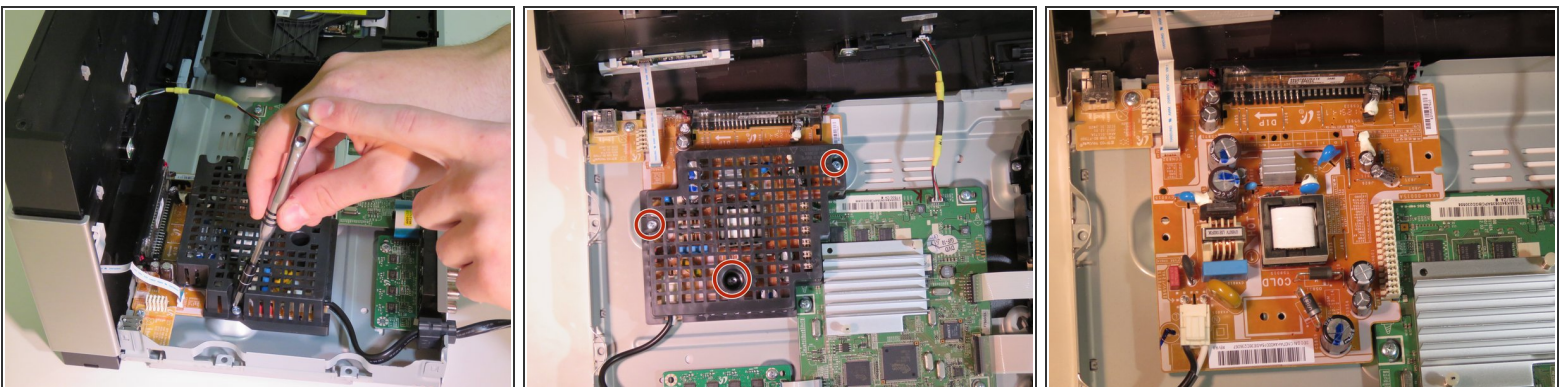
- Use a Phillips head #J1 screwdriver to remove all three (3) 10 mm screws.

Step 2



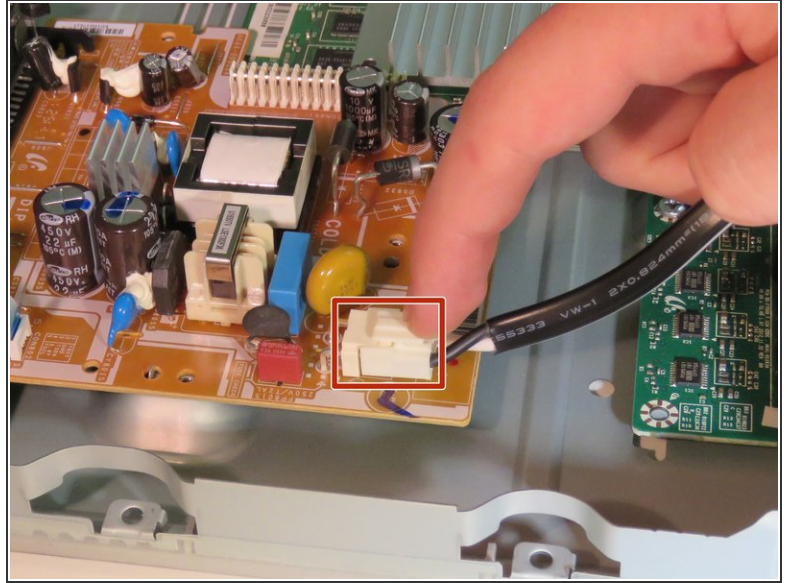
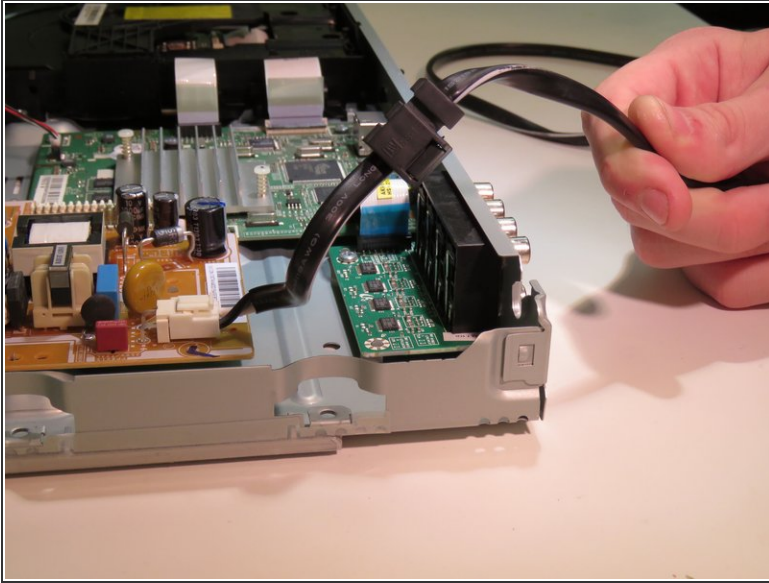
- While firmly gripping the gray, metal base, lift the black plastic cover off the device.
 - The case is clamped onto the edges of the device, so bending of the plastic top will be required. Don't be afraid to use some force, it is unlikely that it will break.
- ⚠ Be careful not to tear ribbon cables attached to the outer cover.

Step 3



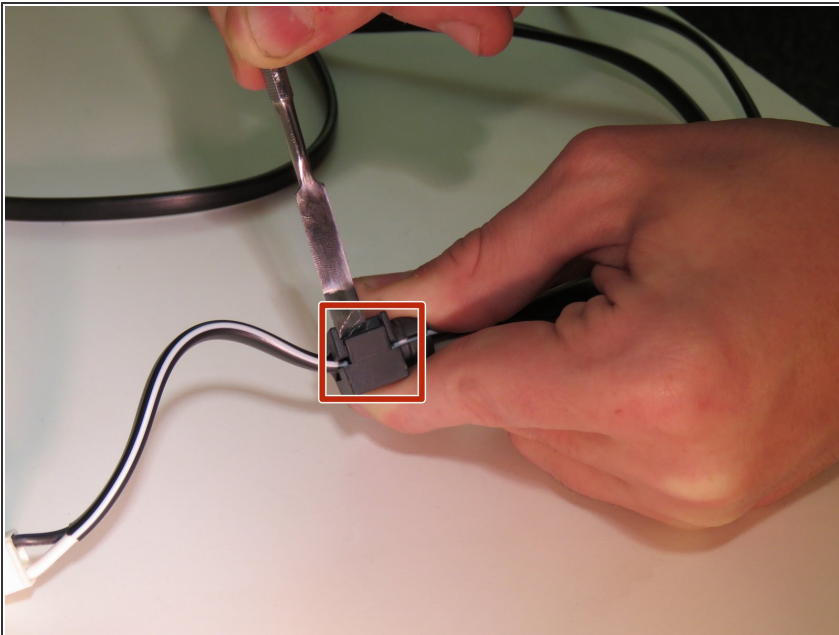
- Using the Philips head #J1 bit, remove the three (3) 10 mm screws that secure the plastic cover.
- Gently remove the plastic cover.

Step 4



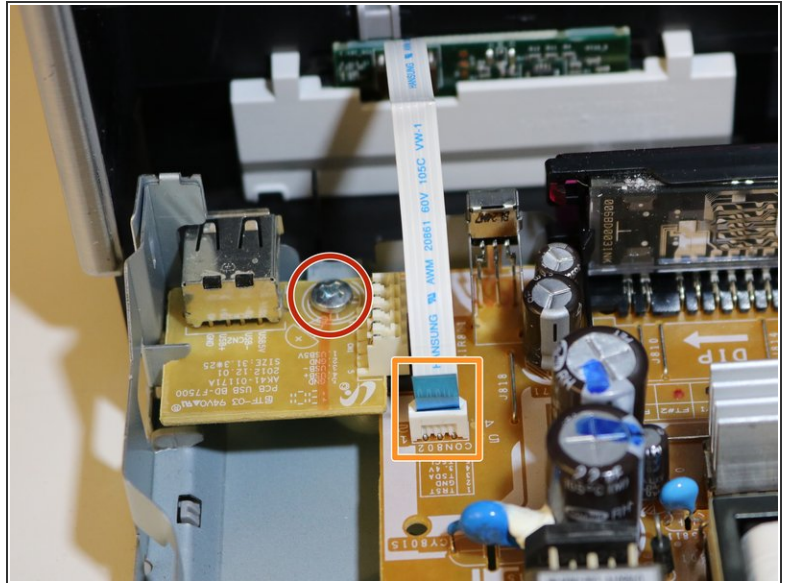
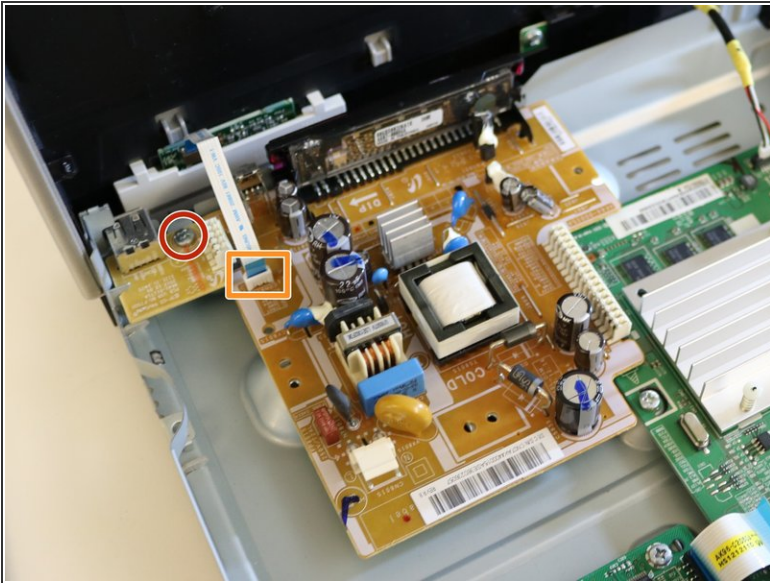
- To remove the power cord, gently apply pressure to the tab located at the base of the cord and lift the cord with your fingers.

Step 5



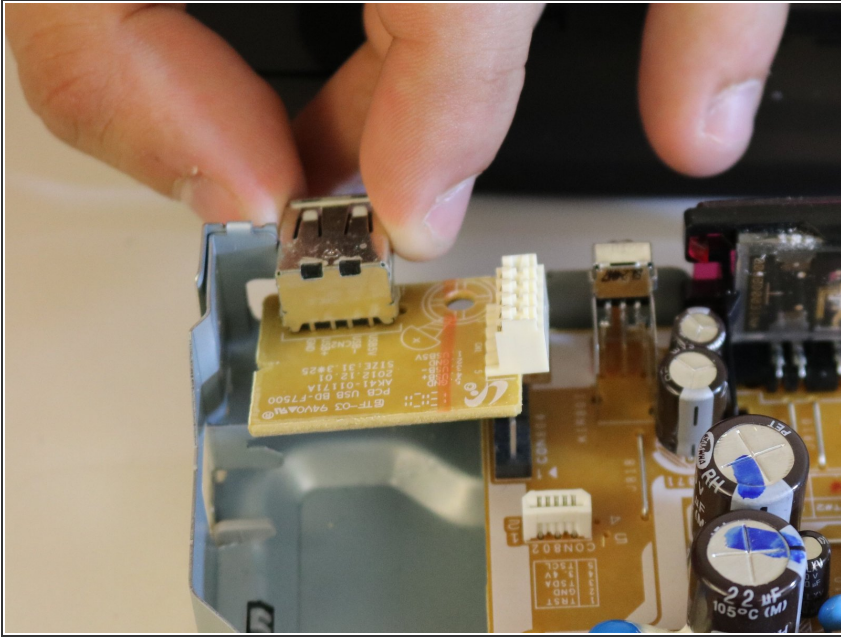
- Locate the black plastic tab located on the power cord.
- Using a spudger, gently insert the tool into the crack, to allow space for the wire to slide out.
- Pull the plastic tab off of the wire, so that it can be placed on the replacement power cord.

Step 6 — DC Power Board



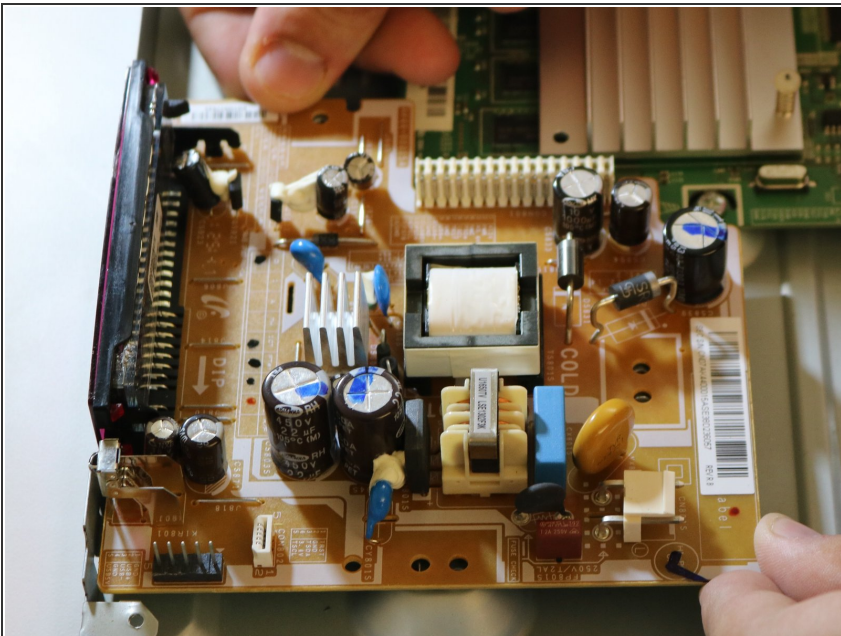
- Remove the 7 mm screw using a phillips head #J1 screwdriver.
 - To remove the ribbon cable, firmly grip the blue tab attached to the base and pull upwards.
- ⚠ The DC Power board needs to be drained of excess charge. This can be done by unplugging the device from the wall and pressing the power button a few times.

Step 7



- To remove the USB board, grab the board and pull upwards until the plastic casing has been detached from the power board
- ⓘ The USB board is lodged against the metal frame. It is helpful to pull up from the white connector and rotate it out.
- ⚠ Be careful not to bend any pins, located beneath the white connector, while removing the USB board.

Step 8



- To remove the board, grip the edges and pull upwards.
- ⚠ Be careful not to bend the pins located beneath the long white connector.

To reassemble your device, follow these instructions in reverse order.