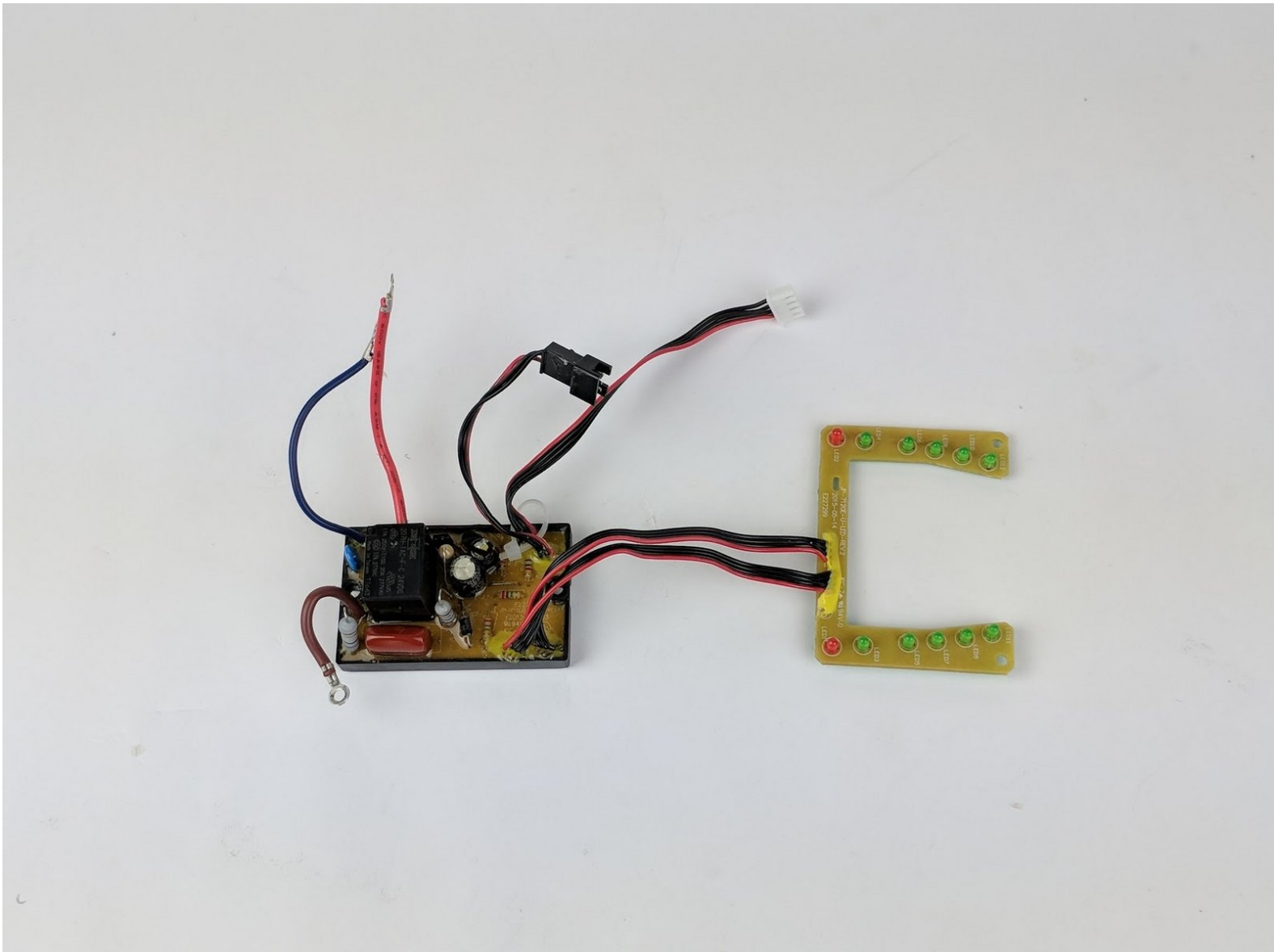




Shark Ultimate Professional Circuit Board Replacement

Before beginning this guide, ensure that the...

Written By: Drew Carff



INTRODUCTION

Before beginning this guide, ensure that the device is both unplugged and cool; failure to do so may result in electrocution or burns.



TOOLS:

- [Phillips #0 Screwdriver](#) (1)
-

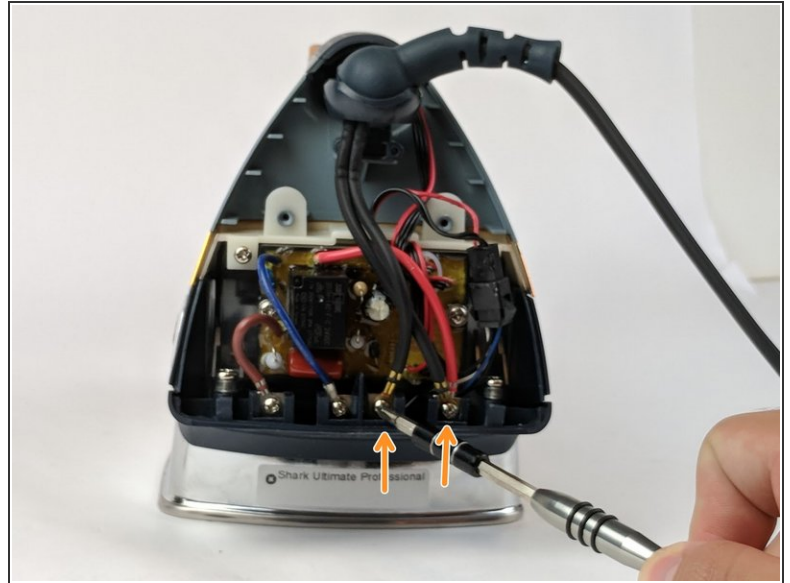
Step 1 — Circuit Board



- Use the Philips head #0 screwdriver to remove the two 11.49mm screws at the back of the iron.
- Remove the back cover piece.

⚠ Make sure the iron is unplugged and cooled off.

Step 2



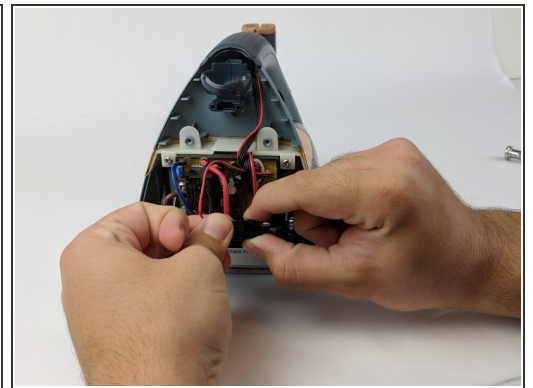
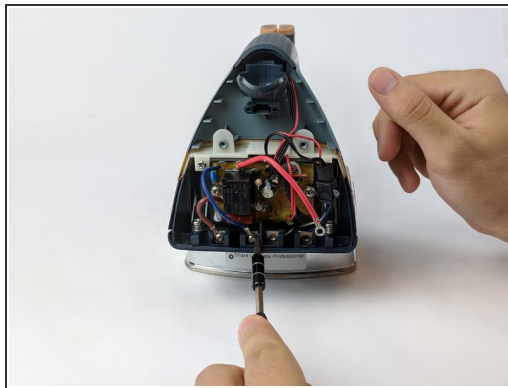
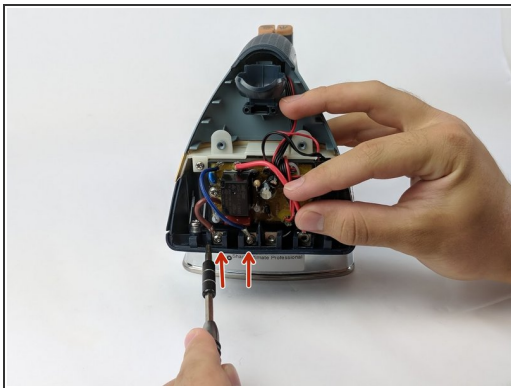
- Use the Philips head #0 screwdriver to remove the two 11.77mm screws holding the white clamp to the iron.
- Use the Philips head #0 screwdriver to remove the two 6.58mm screws holding the black wires to the body of the iron.
- ⓘ Removing the left black wire will also free the red wire, attached by the same screw.

Step 3



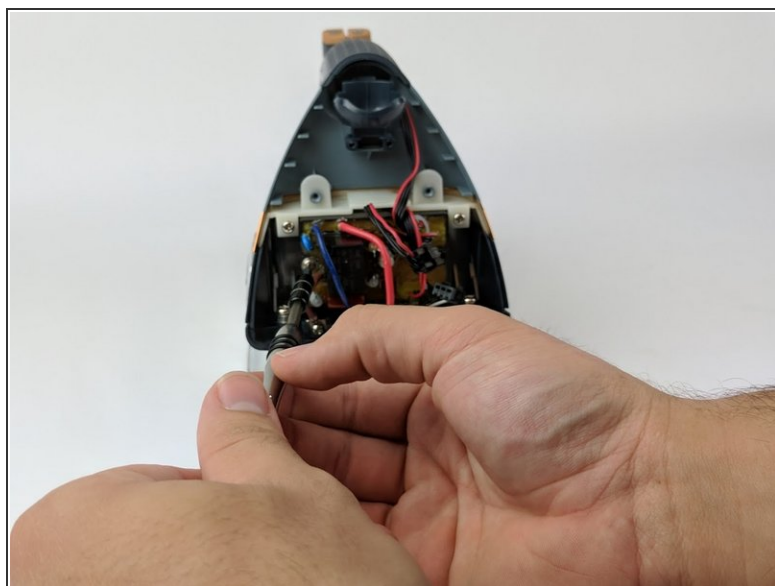
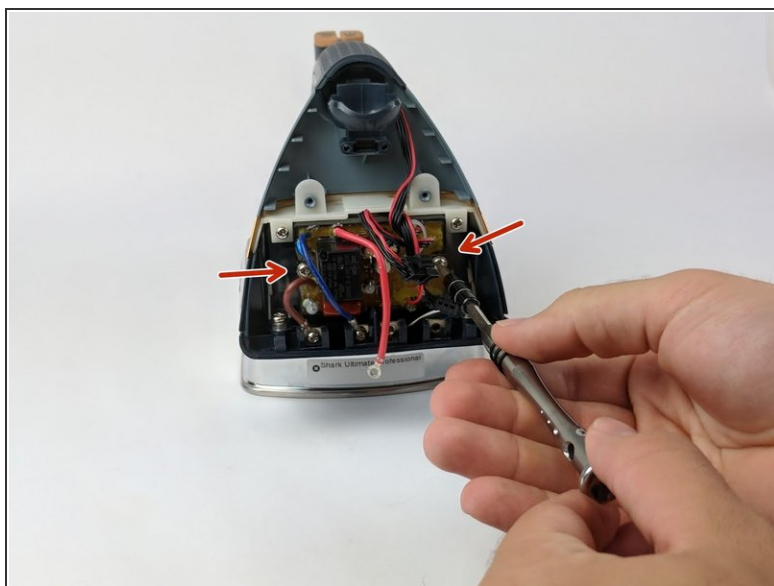
- Pull the split end of the power cord upward through the ball joint.
- Set aside the power cord.

Step 4



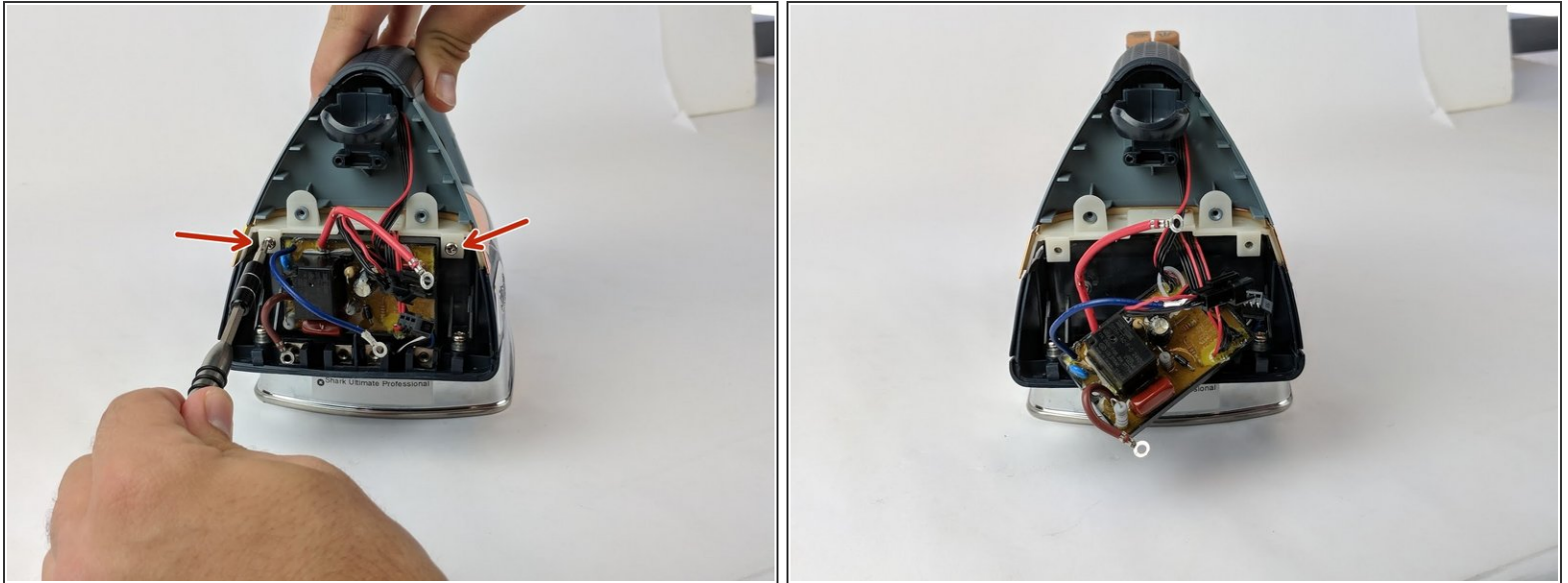
- Use the Philips head #0 screwdriver to remove the remaining 6.58mm screws that hold the wires on the bottom (brown and blue).
- Remove from left to right
- Unclip the black adapter piece on the bottom right.
- ⓘ Wires order (from left to right): Brown, Blue, Red, Black

Step 5



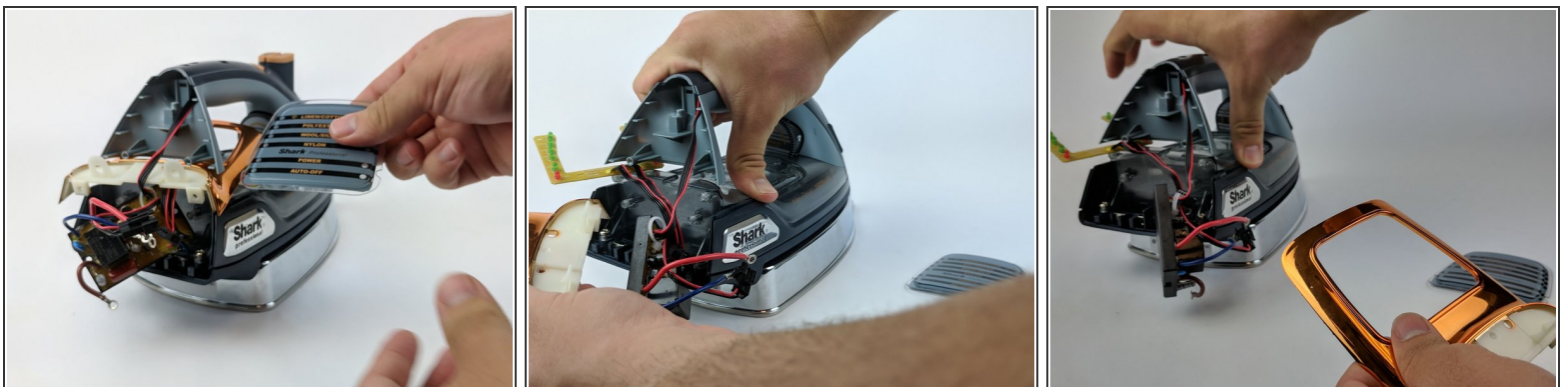
- Use the Philips head #0 screwdriver to remove the two 9.75mm screws (left and right) affixed to the circuit board.

Step 6



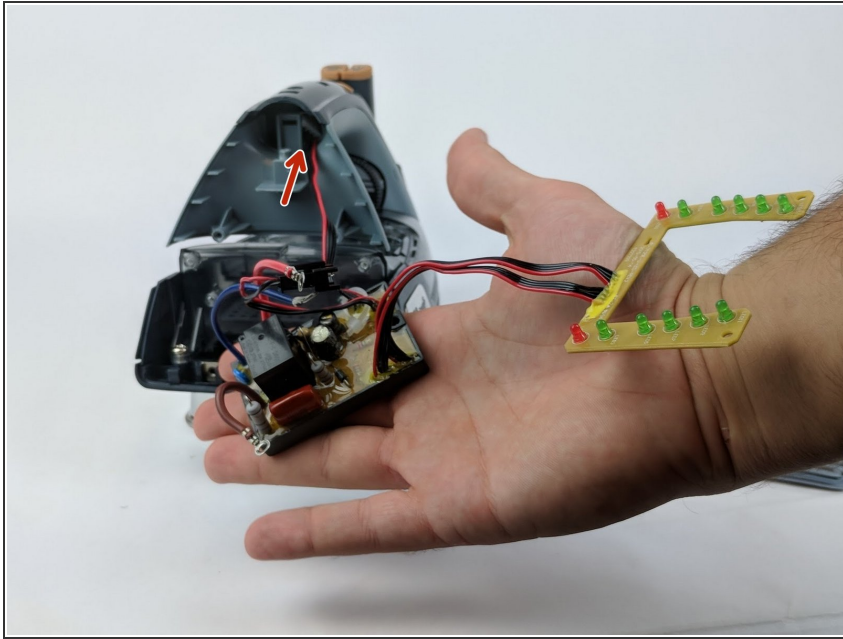
- Use the Philips head #0 screwdriver to remove the two 9.82mm screws (left and right) from the white border on top of the circuit board.
- Gently pull the circuit board from affixed position.
- ⓘ The circuit board will not be completely separated at this point.

Step 7



- Remove the mode display piece and set aside.
- Lift the handle and wiggle the plastic trim and the orange-chrome bezel out from under the handle.

Step 8



- Remove the connecting wire from the connected adapter in the handle by pulling lightly.
- Set aside the circuit board.

To reassemble your device, follow these instructions in reverse order.