



Samsung Gear VR Trackpad Replacement

Replace the trackpad, so that the Gear VR can be able to track where you are pointing to.

Written By: Alfredo Aparicio



INTRODUCTION

Navigating your mobile device while it is connected is accomplished through the use of a trackpad on the side of the headset. If the user becomes unable to control their device the trackpad may have come disconnected or may need replacement. This guide will outline how to access the headset's trackpad for repair or replacement.

The motherboard partially sits on the inner mask piece of the headset and must be removed in order to remove the inner mask piece.

Caution is required while working on the headset as a wire harness connects the USB adapter to the motherboard. Care should be taken not to put any strain on the wire and to open the headset from right to left.



TOOLS:

- [iFixit Opening Tools](#) (1)
- [Metal Spudger](#) (1)
- [Phillips PH000 Screwdriver](#) (1)



PARTS:

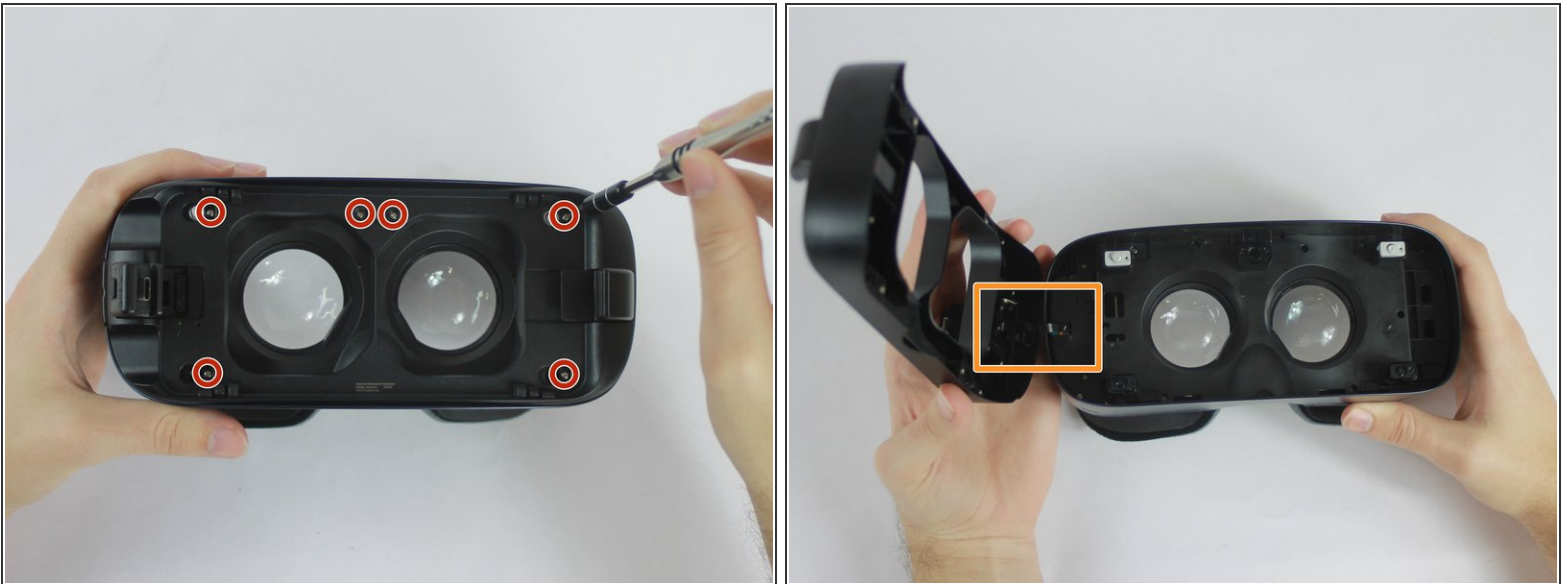
- [Samsung Gear VR Trackpad Sensor](#) (1)

Step 1 — Front Phone Mount



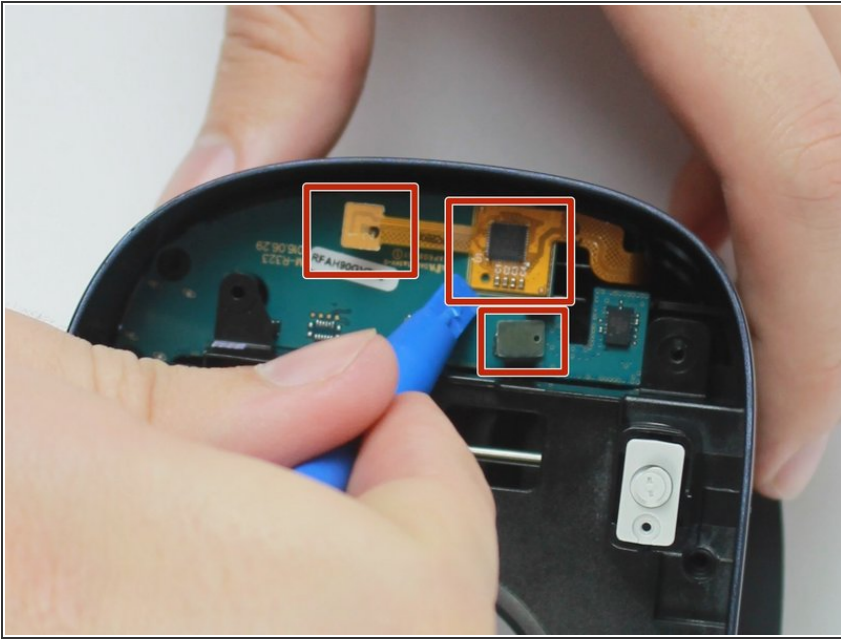
- Remove the front cover to access a plate that holds the phone in place during use.
- Remove the four corner screw covers with a metal spudger to reveal four screws.
- Remove the sticker located at the top center to reveal two additional screws.

Step 2



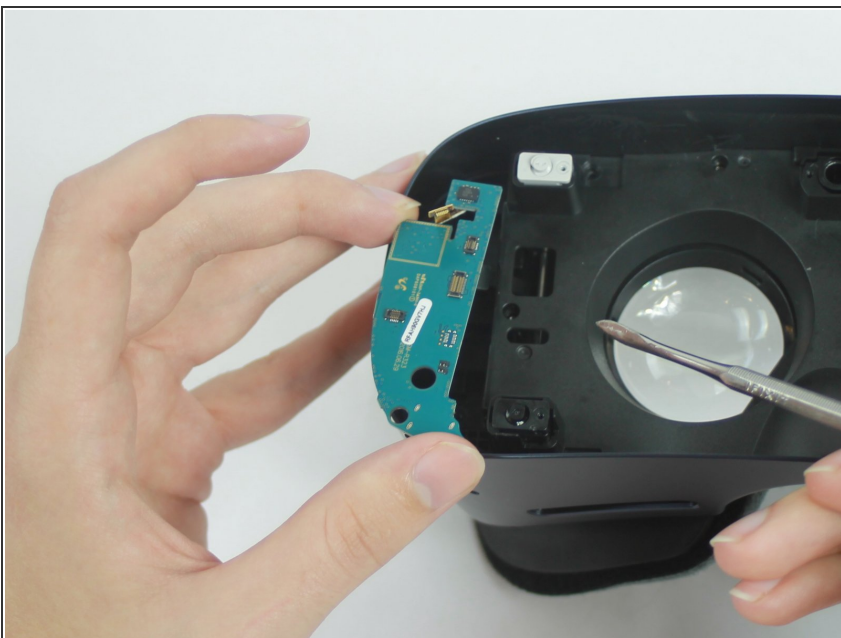
- Using the PH000 tip remove the six 0.5 cm screws that secure the front phone mount.
 - After the six 0.5 cm screws are completely removed lift the front phone mount up and to the left.
- ⚠ When handling your equipment be careful not to strain the wire harness located on the left side of the headset.

Step 3 — Motherboard



- Use the blue plastic opening tool to remove the rest of the the pop connectors from the motherboard.
- ⓘ The larger gold connector is lightly glued down so it may take more effort to remove than the others.

Step 4



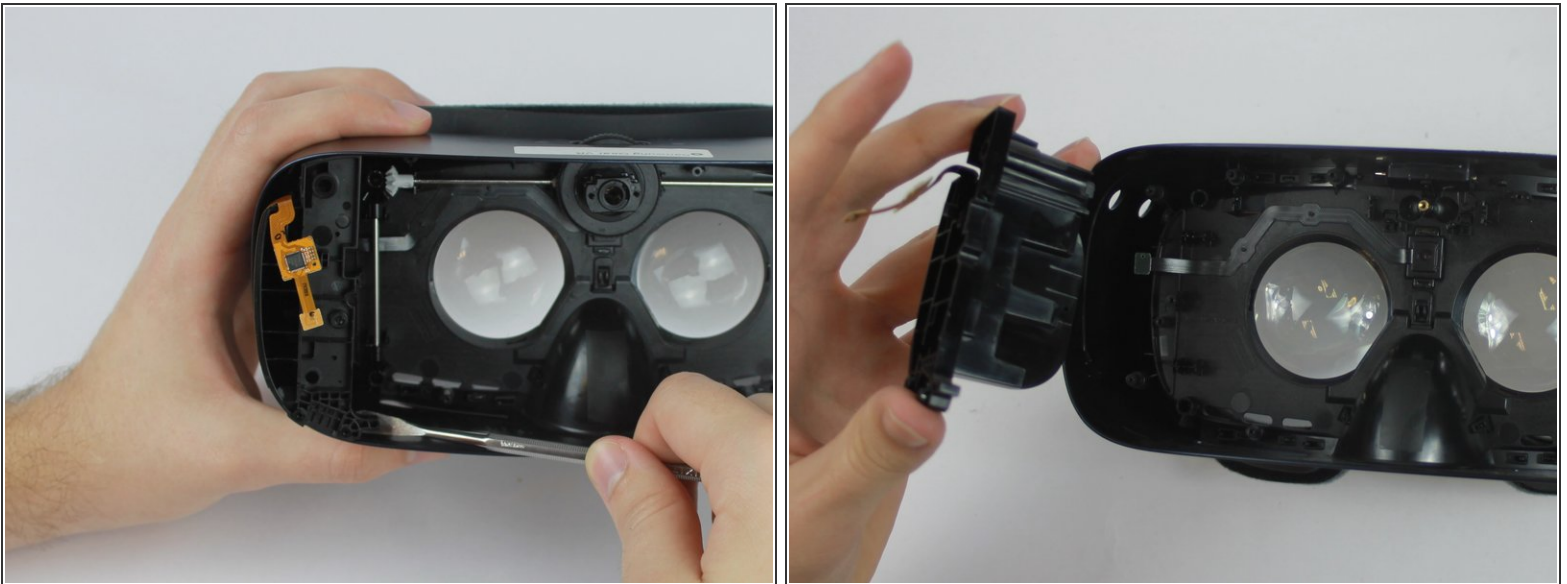
- You can now remove the motherboard from the mask.
- ⚠ Make sure that nothing is connected to the motherboard before you try to remove it as pulling it with something connect might brake the connections.

Step 5 — Inner Mask



- Using the PH000 tip remove the eight 0.5 cm screws from the Inner Mask
- Carefully remove the Inner Mask by pulling it from the inner side of the lenses socket.

Step 6 — Trackpad



- Pry the trackpad sensor loose from the mask.
- i** I found that prying the metal spudger underneath the small outcropping at the bottom of the sensor to be the easiest way to remove the piece.

To reassemble your device, follow these instructions in reverse order.