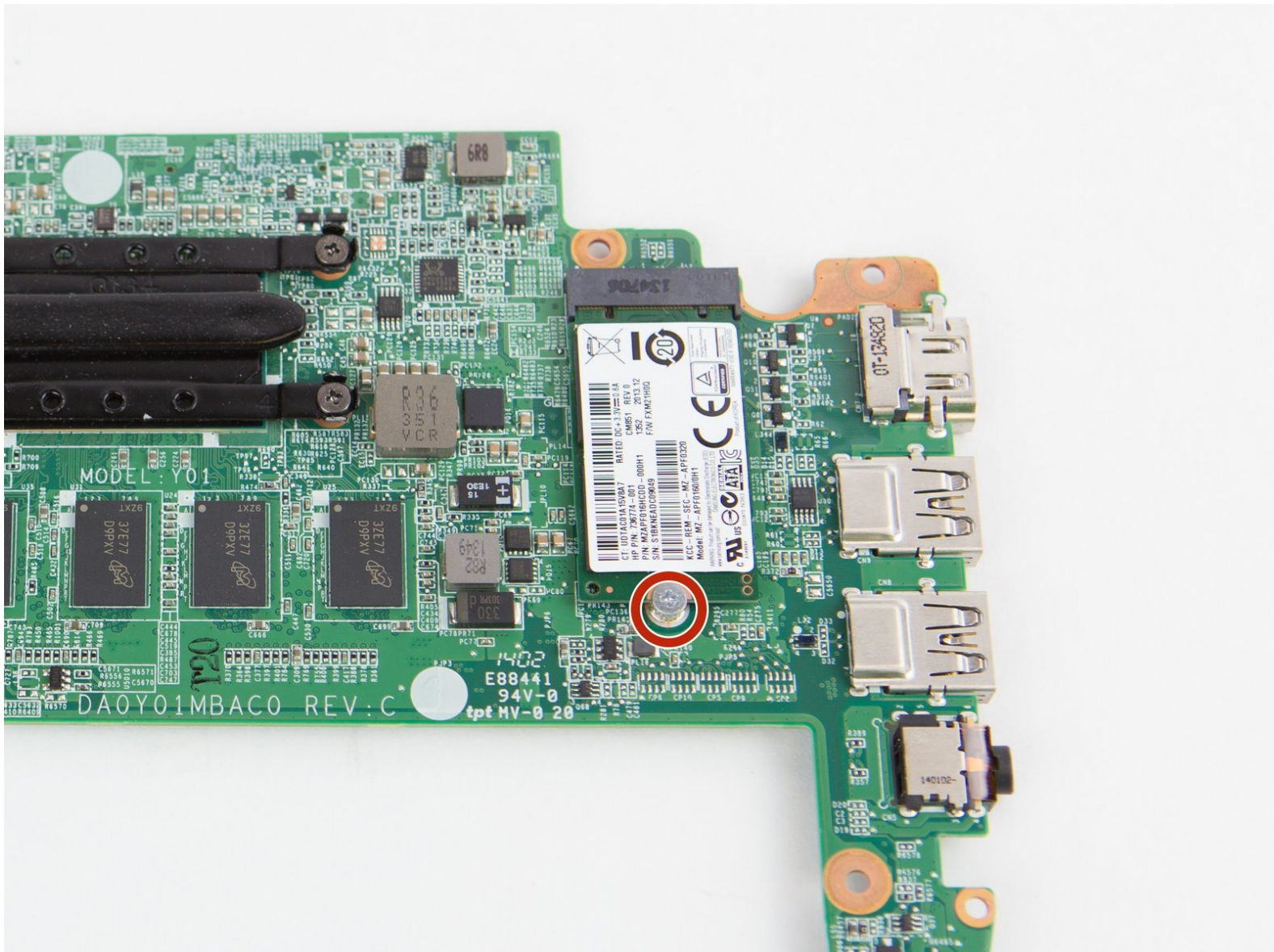




# HP Chromebook 14-Q070NR Solid State Drive Replacement

Using this guide one will be able to replace their solid state drive.

Written By: Kevin Wong



# INTRODUCTION

Before attempting this guide, you should have completed the prerequisite guides in order to gain access to the SSD. Use this guide to replace the SSD in your device.



## TOOLS:

- [Phillips #1 Screwdriver](#) (1)
  - [iFixit Opening Tools](#) (1)
  - [Spudger](#) (1)
  - [Phillips #1 Screwdriver](#) (1)
  - [Phillips #0 Screwdriver](#) (1)
  - [Magnetic Project Mat](#) (1)
-

## Step 1 — Keyboard



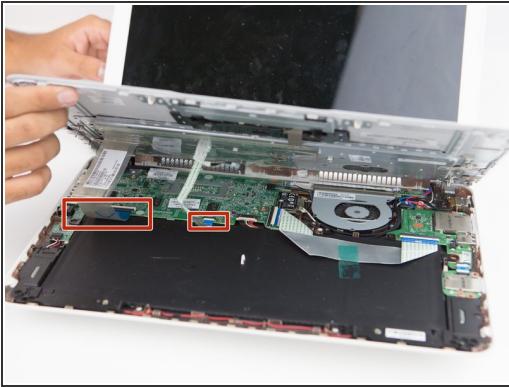
- i At this point, the white caps that hide the top-most screws marked with red circles have been removed.
- Using the Phillips #1 screwdriver, remove the (10) ten screws from the bottom of the device.
- After removing the white caps covering the screws, use the Phillips #1 screwdriver to remove the (3) three screws indicated with red circles.

## Step 2



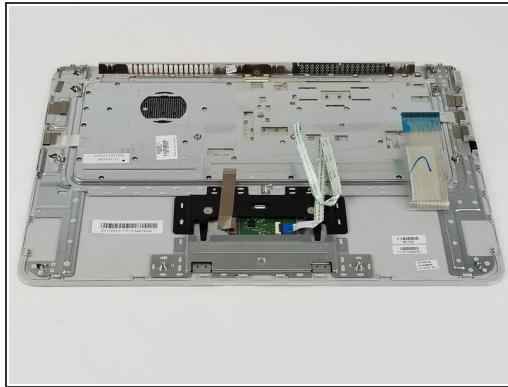
- Open the laptop and place it upright. Remove the keyboard from the device using a plastic spudger or opening tool.
- ⚠ Carefully remove as there are ribbons attached to the keyboard that is connected to the components inside.
- Gently lift the keyboard just enough to expose the ribbons.

## Step 3



- Hold the keyboard up to remove the ribbons from the circuit board.
- To remove each individual ribbon, grab the blue portion of each ribbon and pull it towards your direction until it is fully detached.

## Step 4



- Once the ribbons are detached, remove the keyboard from the device.



## Step 5 — Battery



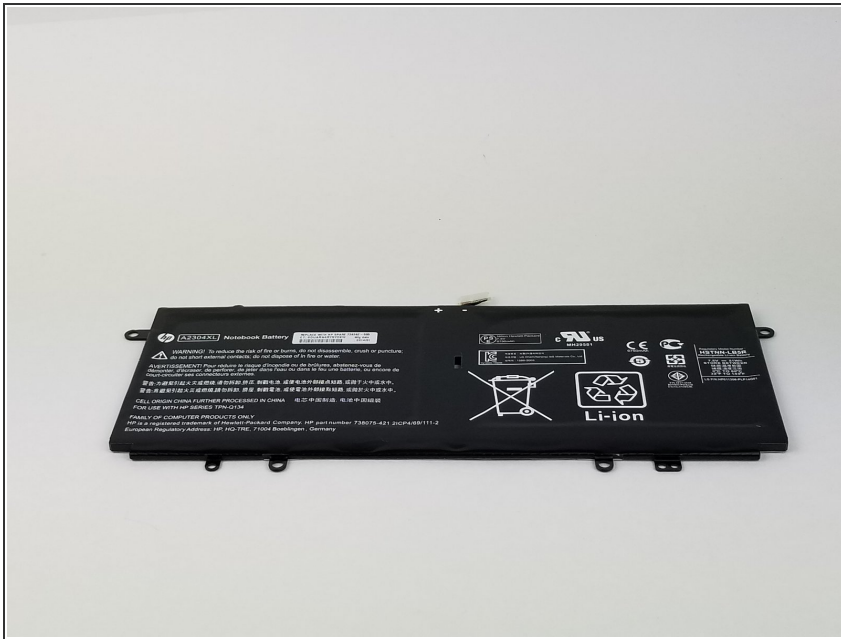
- Using the Phillips #0 screwdriver, remove the (2) two screws at the bottom of the device.
- ❗ Once removed, separate the screws from previous ones. They are different!

## Step 6



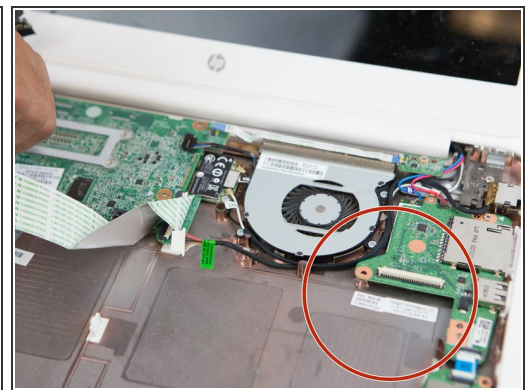
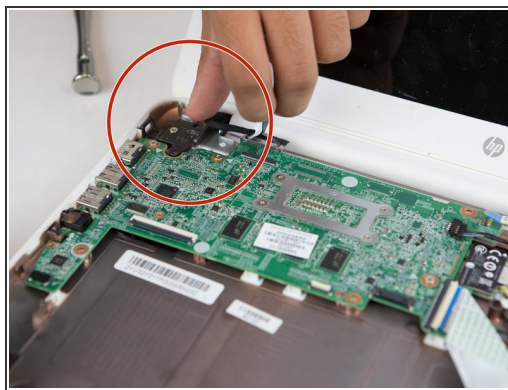
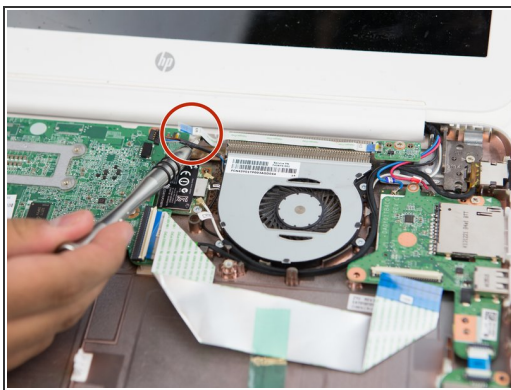
- Remove the taped flat wire from the top of the battery.
- Carefully pull away the connector from the top of the battery to the motherboard.

## Step 7



- Carefully lift the battery and remove it from the device.

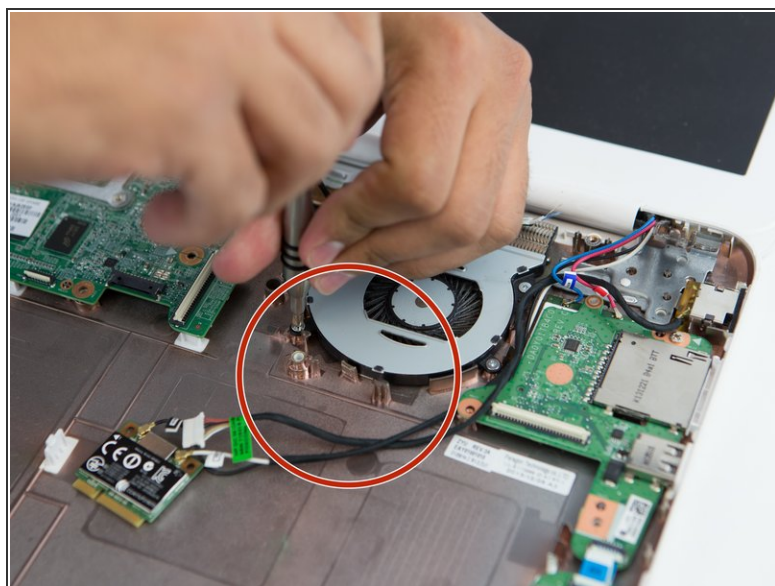
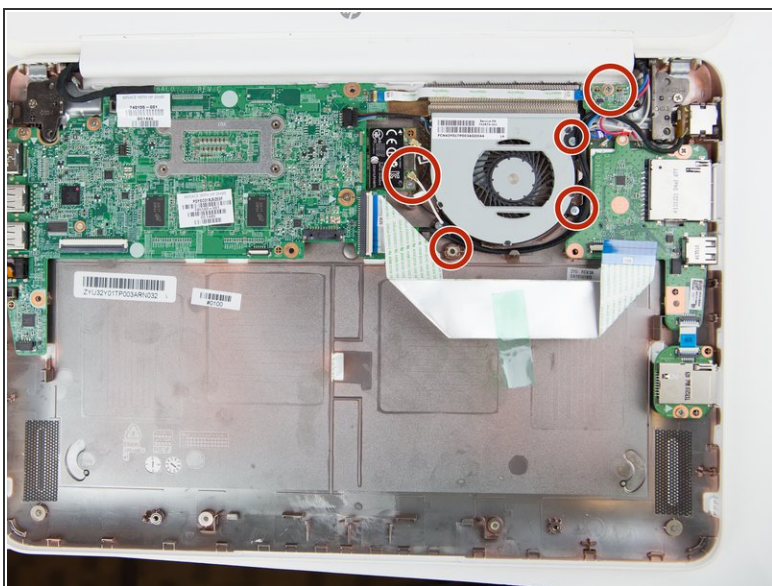
## Step 8 — Motherboard



- Carefully remove the (3) three plastic strips attached to the motherboard.

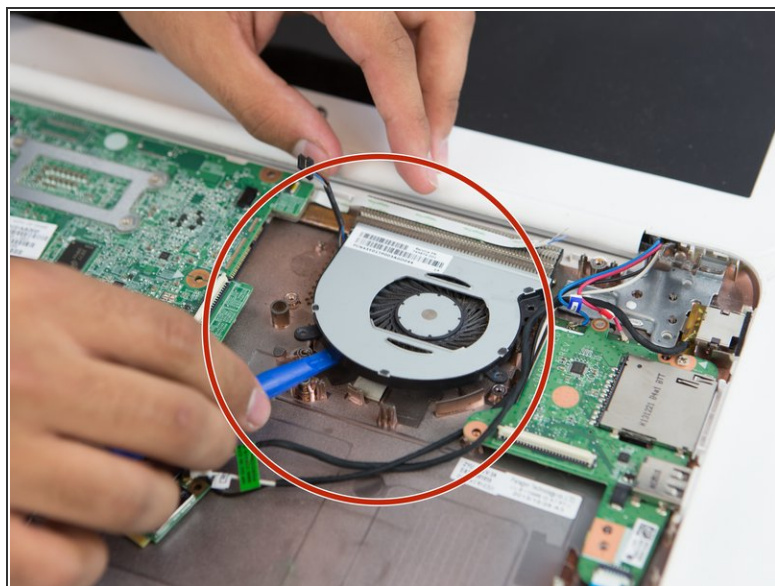
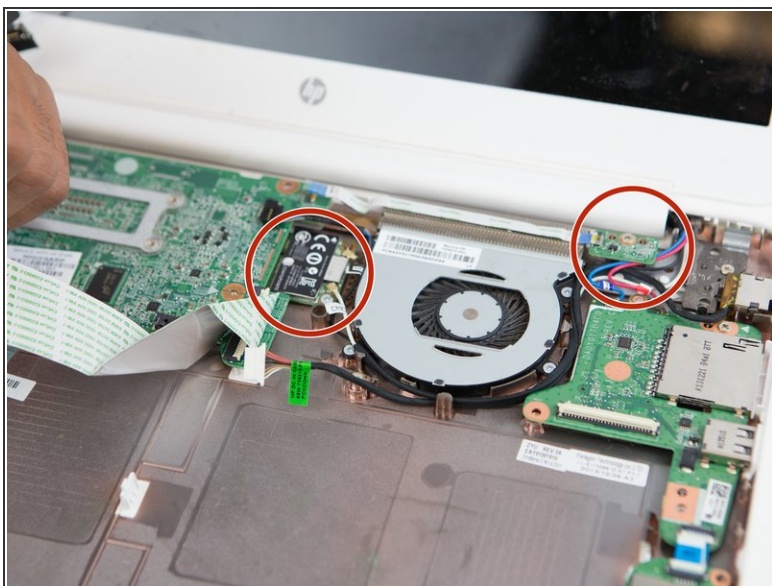


## Step 9



- Use the Phillips #1 screwdriver to remove the (5) five screws.

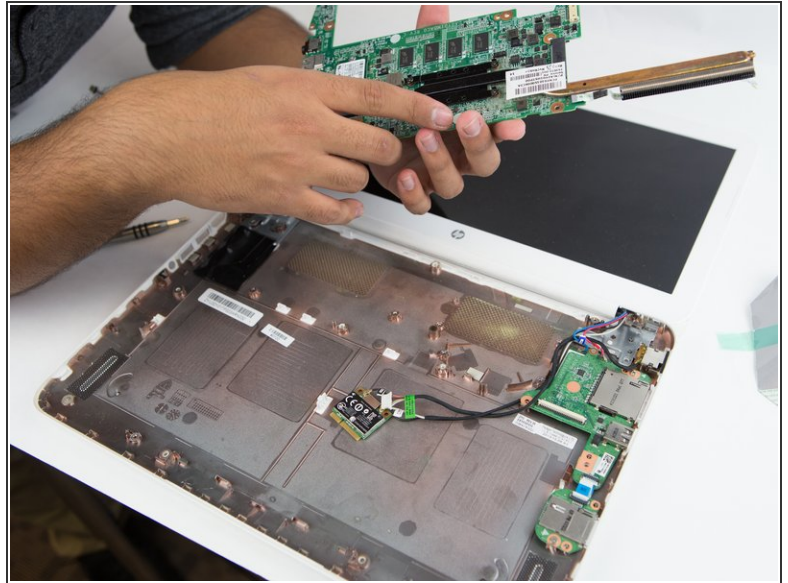
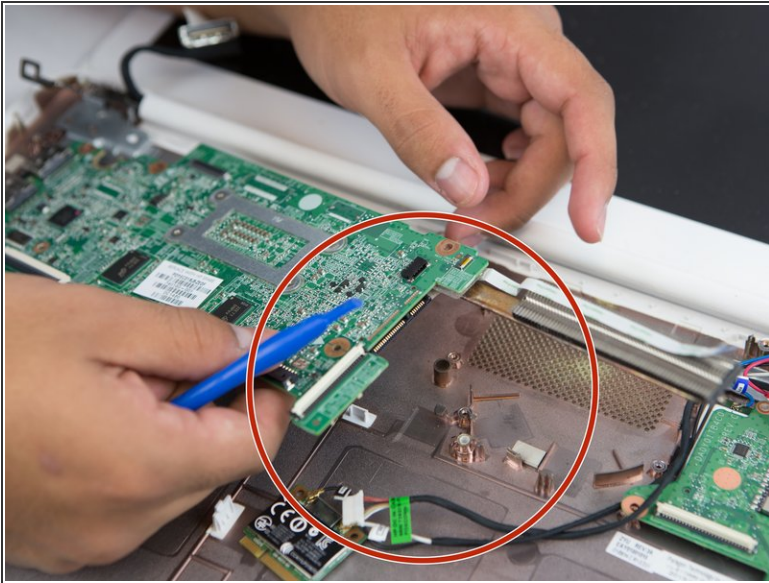
## Step 10



- Use the blue plastic opening tool to disconnect the connectors. Remove the fan from the motherboard.



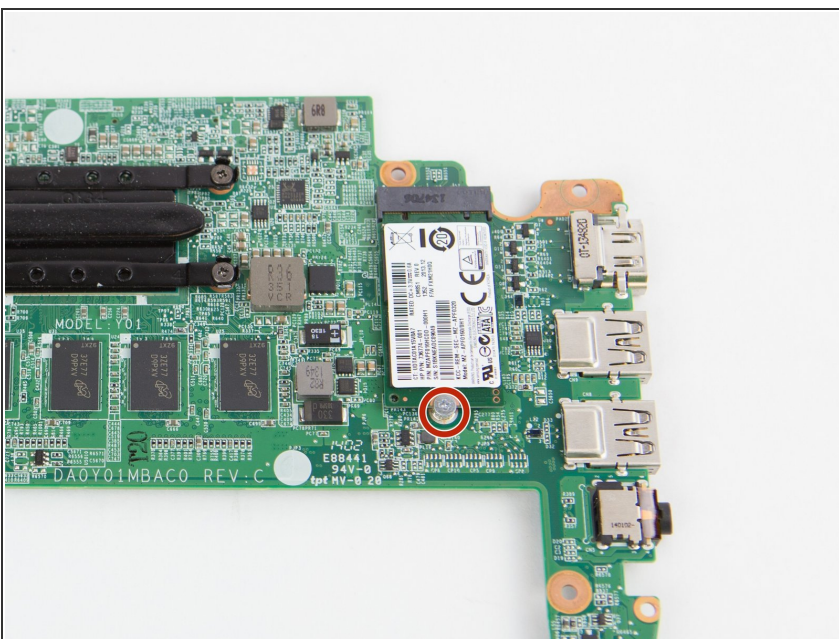
## Step 11



- Gently lift while using the plastic opening tool to unhinge the motherboard from the computer in an upward pattern.

⚠ Be very careful not to detach the motherboard too quickly or forcefully since you could damage or break it.

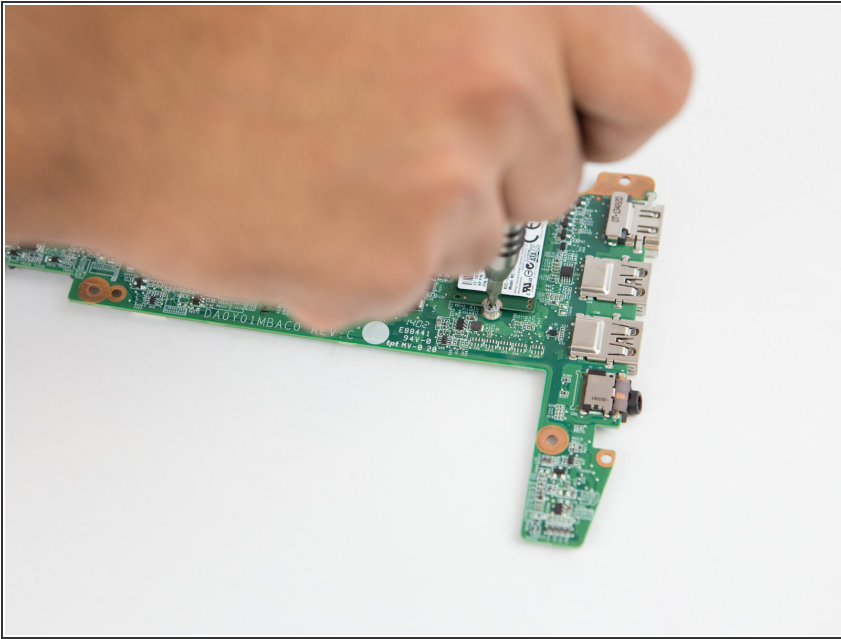
## Step 12 — Solid State Drive



- Locate the retaining screw for the SSD.

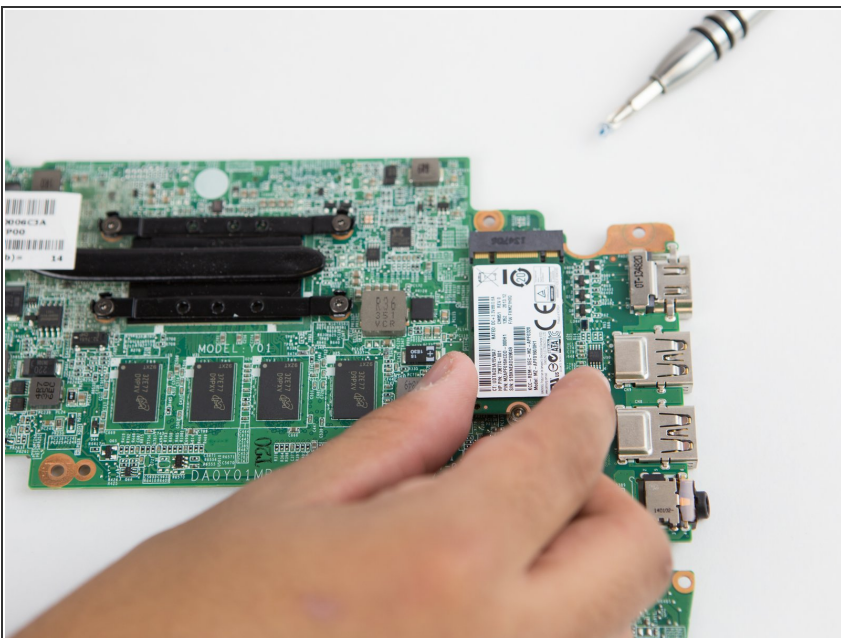


## Step 13



- Remove screw using a phillips head screw driver.

## Step 14



- Gently pull outwards to remove the solid state drive.
- ⚠ Do not apply any upward force to avoid breaking any other components.

To reassemble your device, follow these instructions in reverse order.