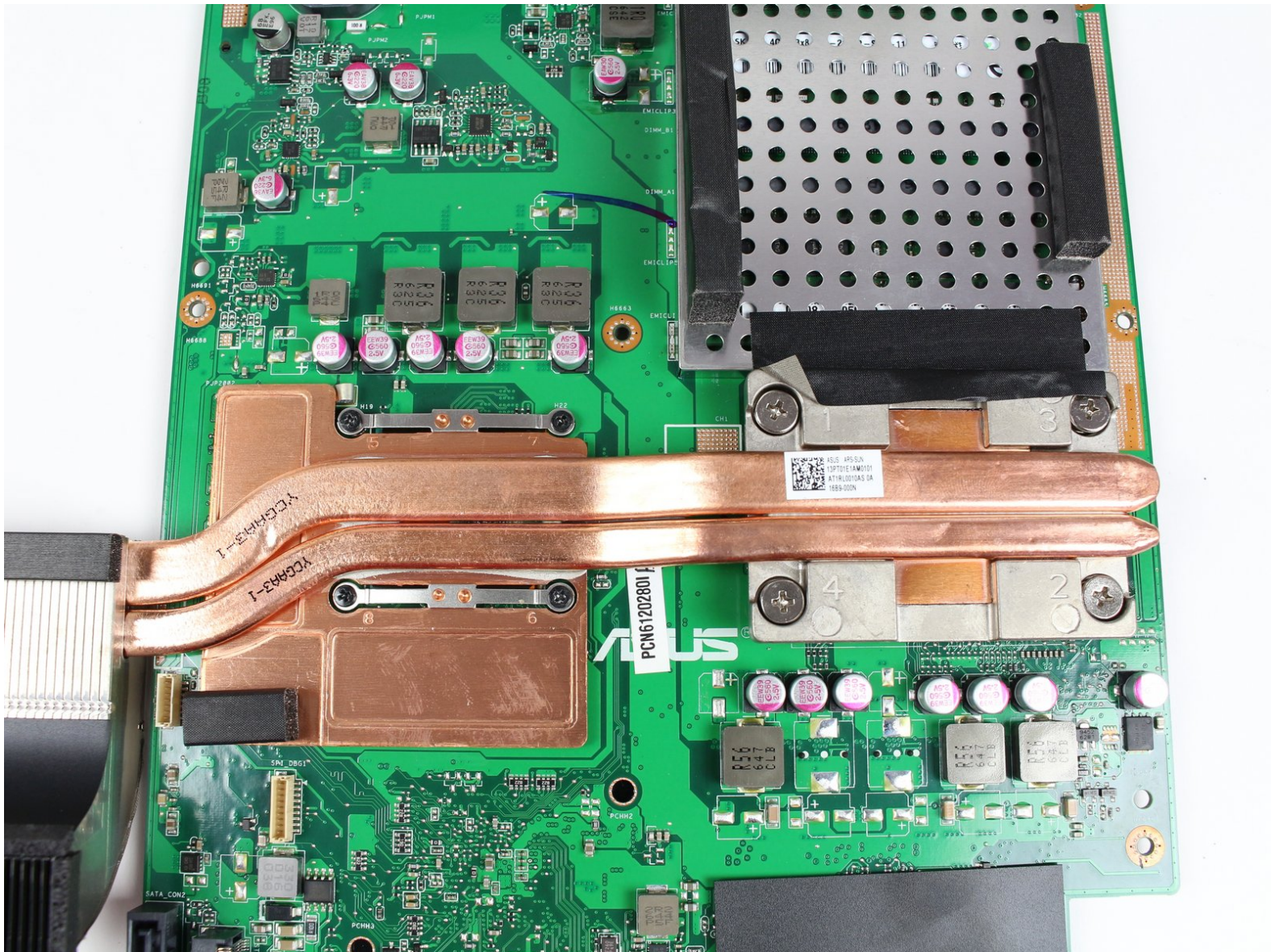




Asus Zen AiO Pro Z240IC Heat Sink Replacement

How to replace the Asus Zen AiO Pro Z240IC heat sink to help prevent overheating.

Written By: Jessica Lerena



INTRODUCTION

This guide will teach you how to replace the Asus Zen AiO heat sink. No prior knowledge is required.



TOOLS:

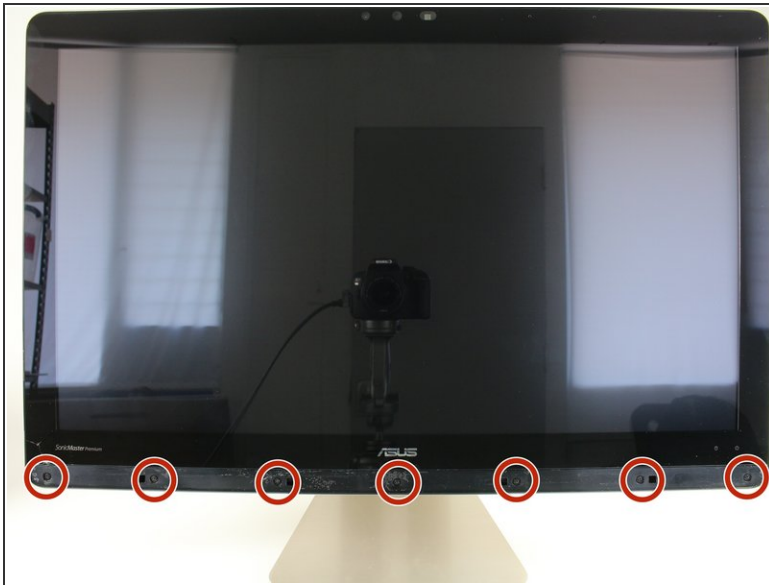
- [Phillips #0 Screwdriver](#) (1)
 - [Phillips #1 Screwdriver](#) (1)
 - [iFixit Opening Tools](#) (1)
-

Step 1 — Screen



- Use the plastic opening tool to pry off the black plastic strip at the bottom of the screen by wiggling the tool between the strip and the screen.
- ⓘ The strip is held in place with adhesive. You may hear a crackling sound as the strip is peeled off.
- Run the opening tool slowly along the base of the screen, peeling the black strip back, until the opposite end of the screen is reached.



Step 2



- Use a Phillips #1 screwdriver to remove the seven (7) 4.8 mm screws from the base of the screen.

Step 3



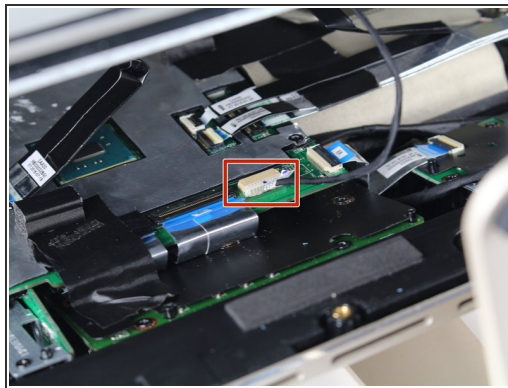
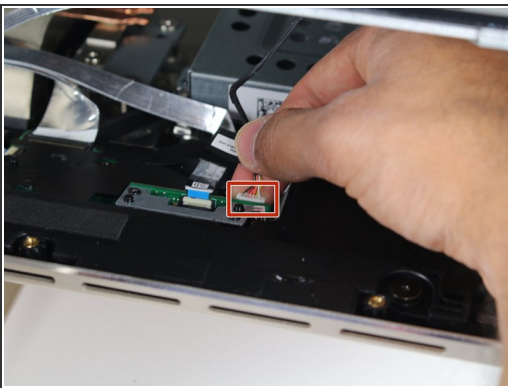
- Place the computer on its back, facing up.
 - Wedge the plastic opening tool in between the screen and the bezel of the aluminum computer casing.
 - Move the tool along the entire edge of the screen with an up-and-down prying motion to loosen the screen from the casing. Do not lift the entire screen away from the computer yet.
-  The screen is held in place by plastic tabs. These will create a popping sound when loosened.
-  The screen assembly will flex as it is pried off. Do not bend the screen too far or the glass screen could shatter.

Step 4



- Lift the screen from the bottom edge by about 6 inches. Prop it open with one hand.
- Look inside the computer and locate five (5) cables that connect the embedded components of the screen (camera, microphone, etc.) to the rest of the computer.

Step 5



- Remove the two (2) cables that are connected to the computer by white, rectangular terminal blocks by pulling straight out on the plug.
- ⓘ The cables and wires in these steps are delicate; do not tug on the individual wires that make up each cable.

Step 6



- Use a finger to lift the plastic locking flaps that hold the remaining three (3) ribbon cables in place.
- Remove the cables from their terminals by slipping them away from their connectors.
- ☑ The black line on the ribbon cables mark the connecting region. When reinstalling, insert the cable up to this line so the locking flap covers it.

Step 7 — WiFi (WLAN) Card



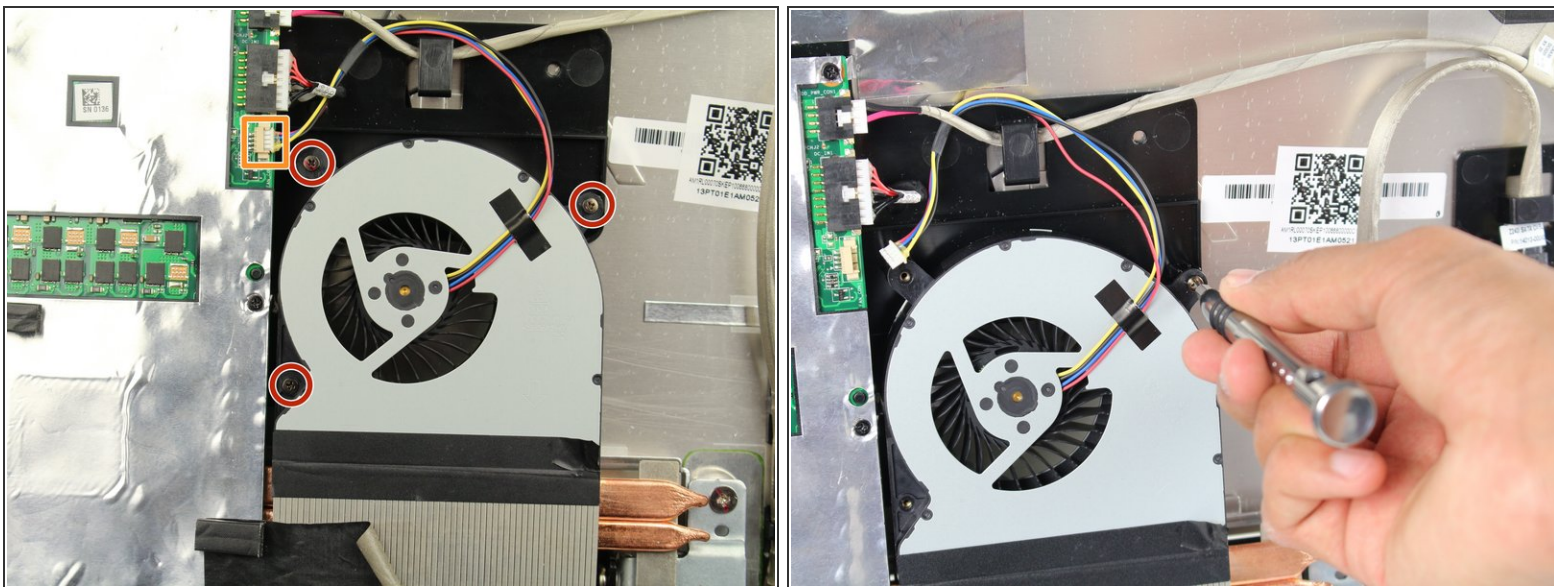
- Locate the WLAN card in the upper left hand corner of the computer.
- Use a Phillips #1 screwdriver to remove the 3.2 mm screw on the top of the WLAN card.

Step 8



- Pull out the WLAN card from its socket.
- Remove the two antennae wires from the WLAN card by pulling up on the coaxial connectors.

Step 9 — Fan



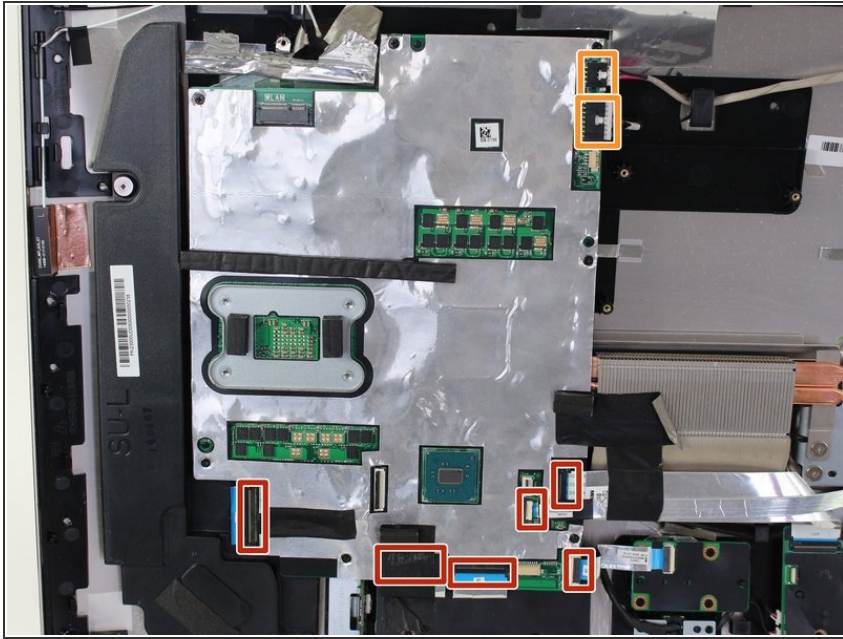
- Use a Phillips #0 screwdriver to remove the three (3) 4.8 mm screws from the fan unit.
- Remove the cable connecting the fan to the motherboard by pulling the cable out of its socket.

Step 10



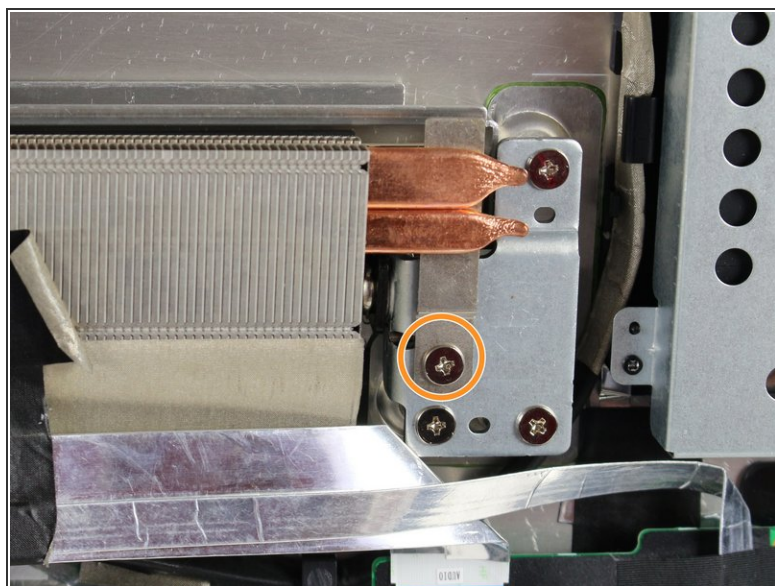
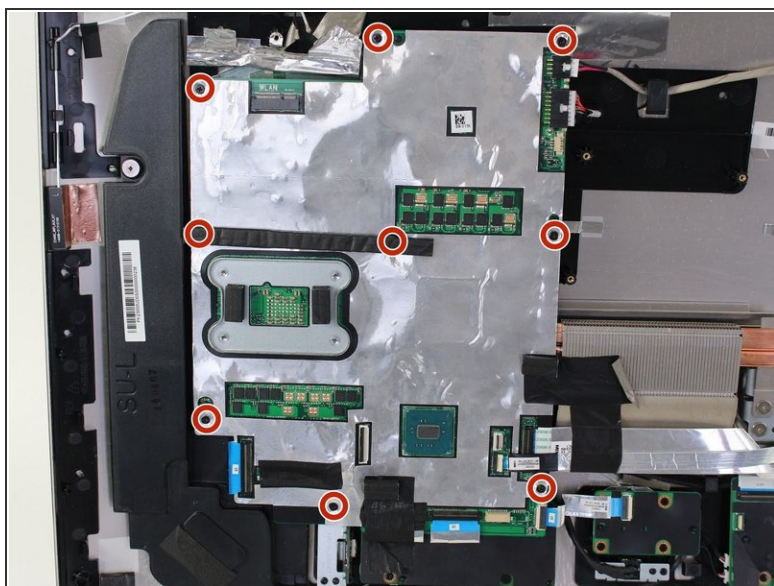
- Remove the fan by peeling off the black electrical tape holding it against the heat sink vents.

Step 11 — Motherboard



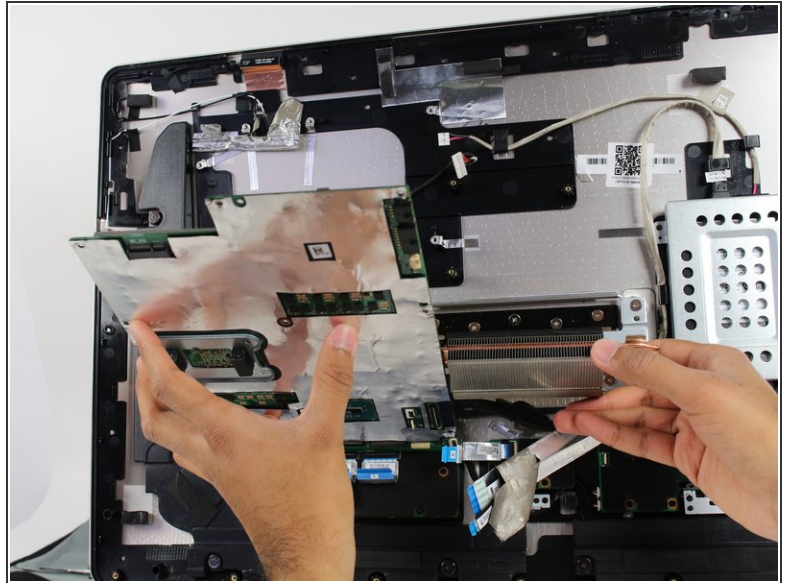
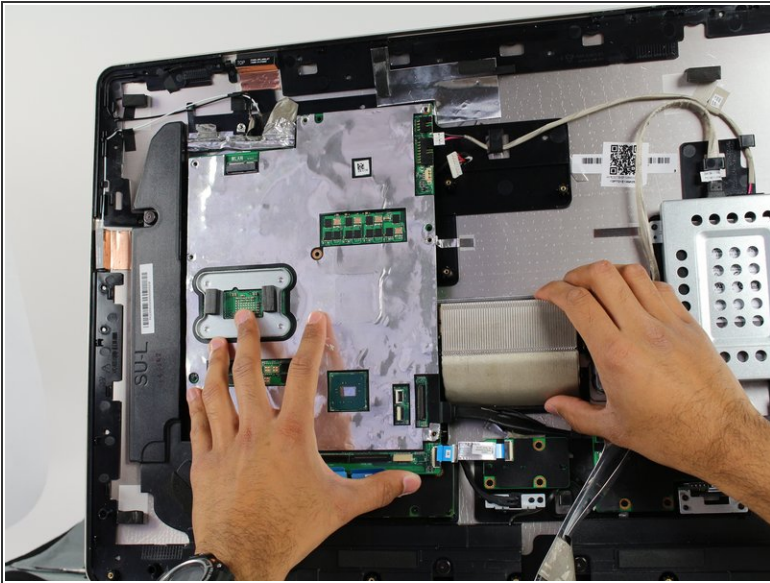
- Remove the six (6) ribbon cables by lifting up on the plastic locking tabs and then slipping the cables out of their sockets.
- Remove the other two (2) cables by pulling straight out on the white connectors.
- ⓘ One ribbon cable is hidden beneath black tape.
- ⚠ The motherboard is ESD sensitive. Limit your contact with the green circuit board surface and electrical components. When handling the board, hold it by the edges.
- ★ The black lines on the ribbon cables mark the connecting region. When reinstalling, insert the cables up to this line so the locking flap covers it.

Step 12



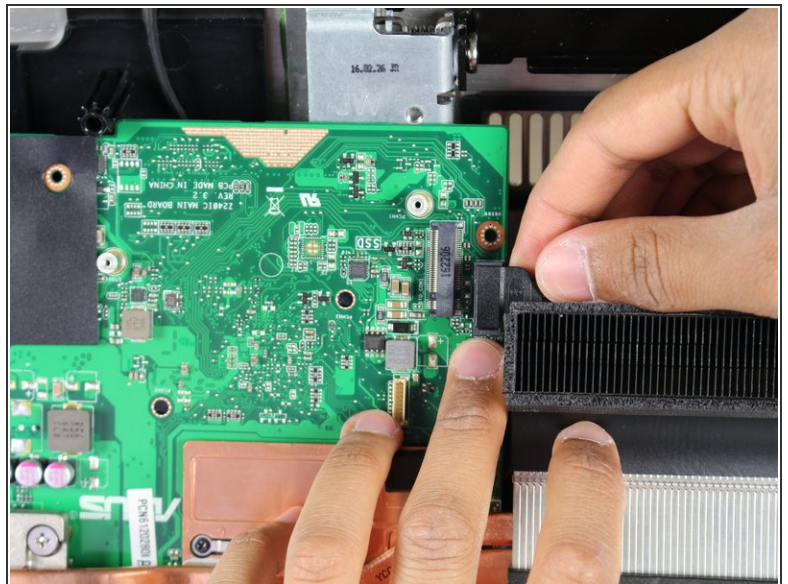
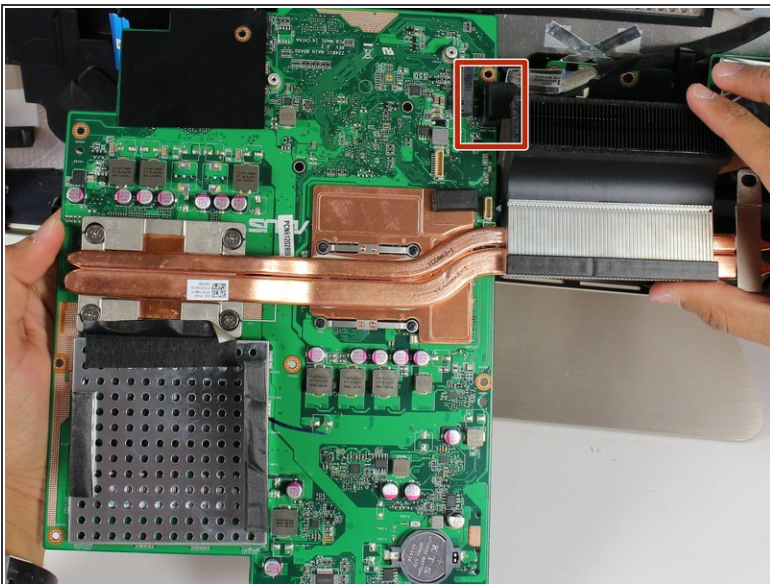
- Use a Phillips #1 screwdriver to remove nine (9) 3.2 mm screws from the motherboard.
- ⓘ Two of the screws near the middle of the board are hidden beneath padding.
- Use a Phillips #1 screwdriver to remove the one (1) 4.8 mm screw directly below the copper heat sink channel.

Step 13



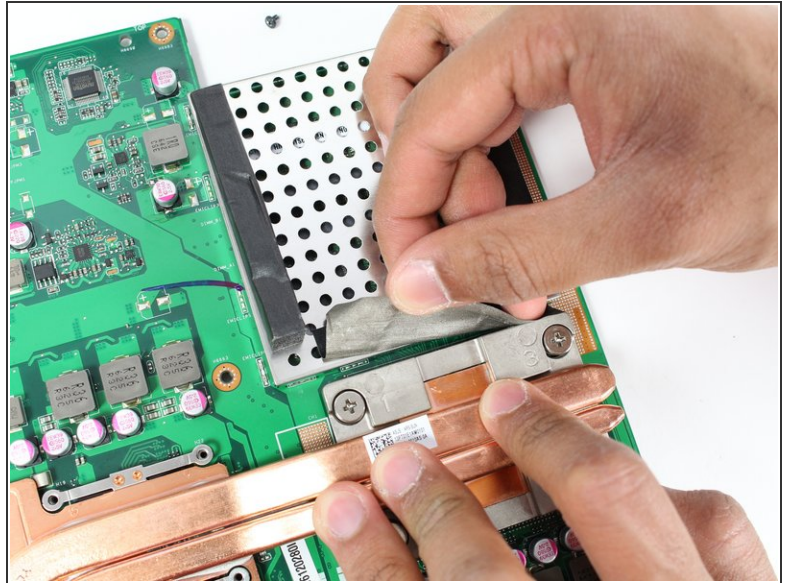
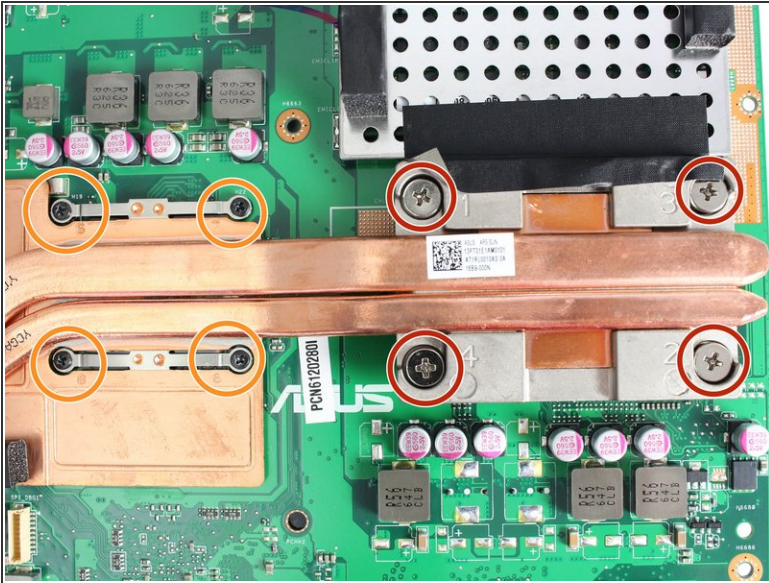
- Lift the motherboard just enough to dismount it from the plastic pegs that hold it in place.
- Rotate the motherboard towards yourself while supporting the heat sink by pivoting on its bottom edge.

Step 14



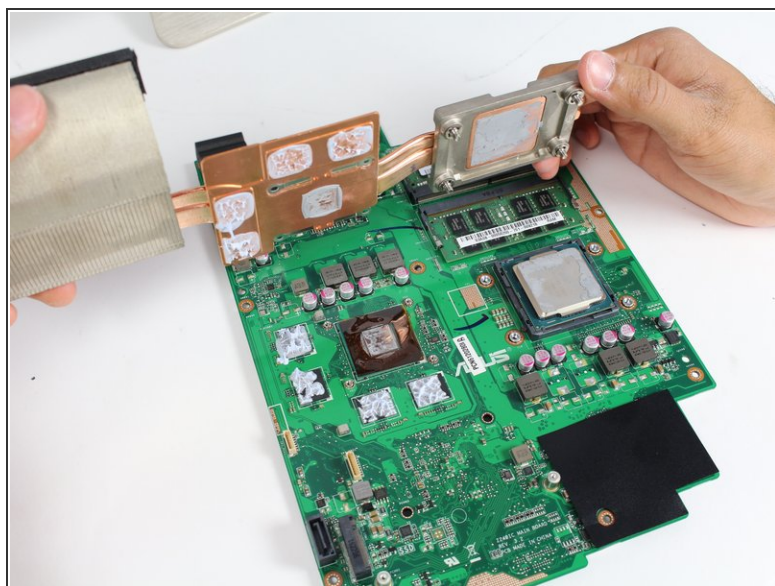
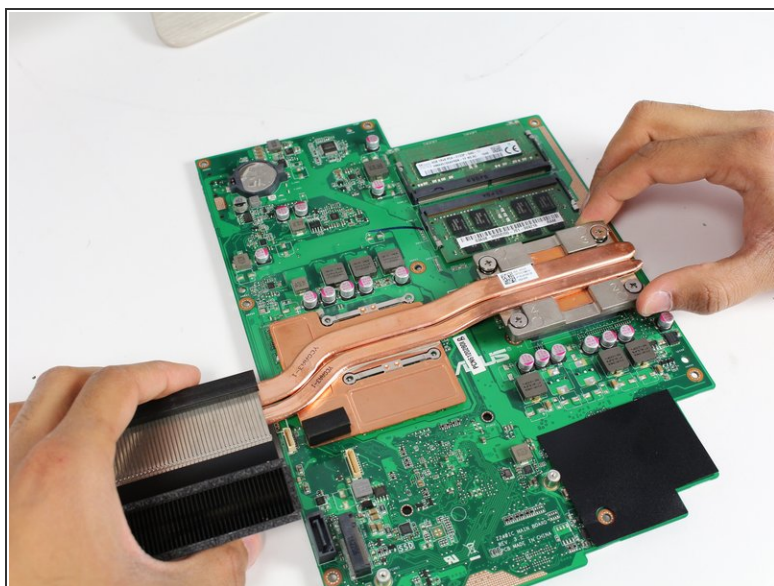
- Remove the SATA cable on the opposite side of the motherboard by pulling directly up from the board.

Step 15 — Heat Sink



- Use a Phillips #1 screwdriver to loosen the four (4) large silver screws evenly in the order of the numbers engraved next to each screw.
- Use a Phillips # 0 to loosen the other four (4) 2.4 mm screws evenly in the order engraved on the copper next to each screw.
- Repeat the last two bullets until all the larger silver screws make a clicking sound and the 2mm screws are removed.
- ⓘ The silver screws cannot be completely removed.
- Peel away the black tape between the RAM shield and the heat sink.
- ✦ When reattaching the heat sink to the motherboard, make sure to tighten the screws a little bit at a time, in the same order as before, until they are all snug.

Step 16



- Remove the heat sink by lifting up.
- ☑ During reassembly, make sure to use a fresh application of thermal paste. Refer to the following guide: [How to Apply Thermal Paste](#)

To reassemble your device, follow these instructions in reverse order.