



Shark Rotator Powered Lift-Away Head Nozzle Disassembly

This disassembly is necessary to remove...

Written By: Dan lee



INTRODUCTION

This disassembly is necessary to remove multiple features such as the brush, the brush belt, and the headlights.



TOOLS:

- [64 Bit Driver Kit](#) (1)

you will need the Phillips, Flathead, and Torx drivers for the disassembly.

Step 1 — Shark Rotator Powered Lift-Away Head Nozzle Disassembly



- Push the lift away button and pull the handle up to separate the body from the wand section.

Step 2



- Push lift away button on the wand then lift up on the top section to separate.

Step 3



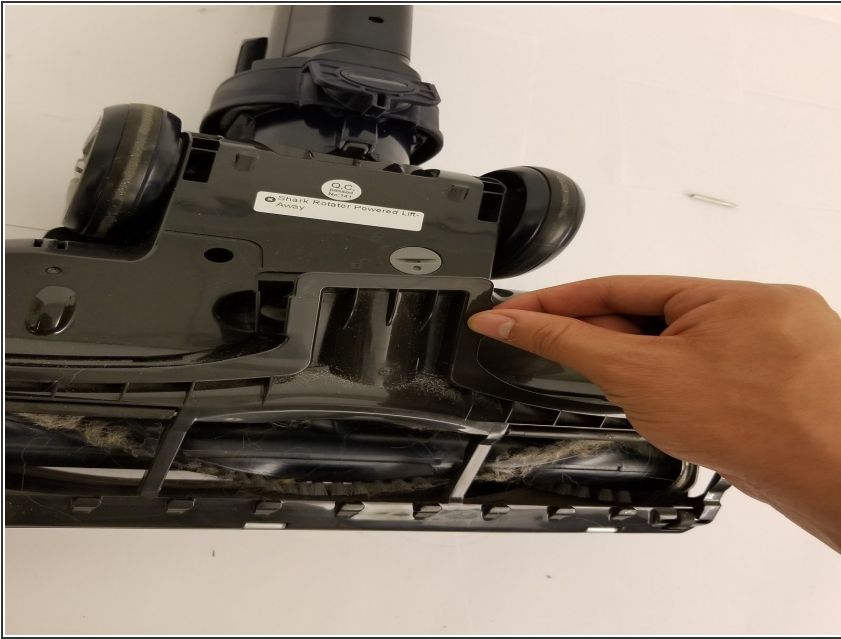
- Tilt the wand shaft backwards for convenient.

Step 4



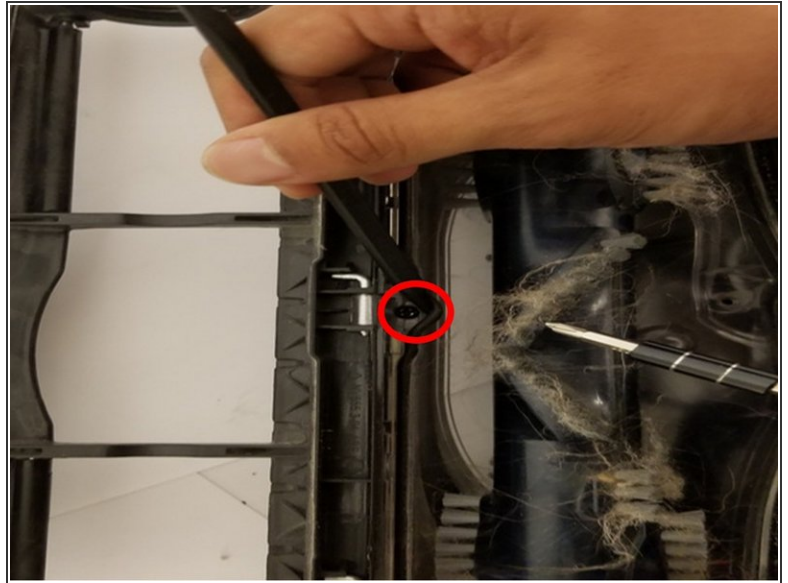
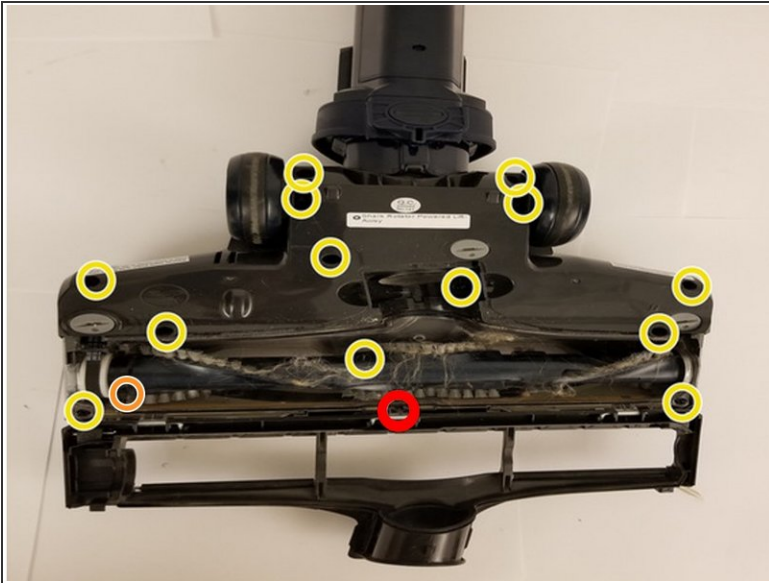
- Lay the head nozzle piece upside down.
- Rotate the three gray taps to the unlock position.

Step 5



- With your fingers, pry and pull the brush cage open.

Step 6



- Remove the 13 screws (circled in yellow) using a phillips screwdriver.

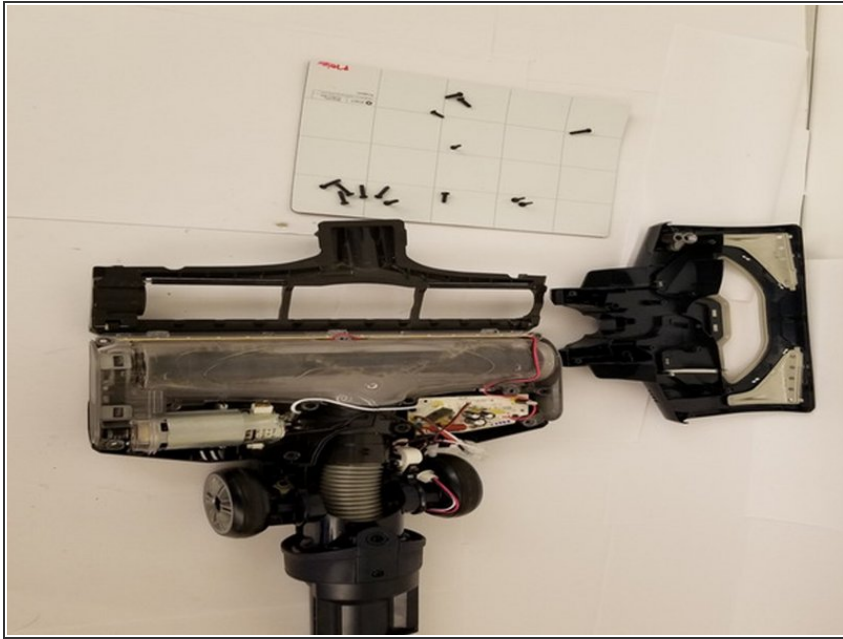
⚠ Be sure to keep track of which screws go into which hole.

- Remove the one screw (circled in red) that has a Torx head (might be Phillips head on some models).

⚠ The Torx screw is hidden under a rubber gasket. Carefully, lift up the gasket without damaging it to access this screw.

- Remove the horizontal screw (circled in orange) that attaches the gray side panel (necessary to remove the white cap on the roller brush in step 8)

Step 7



- Lift up the top cover now that all of the screws have been removed.

To reassemble your device, follow these instructions in reverse order.