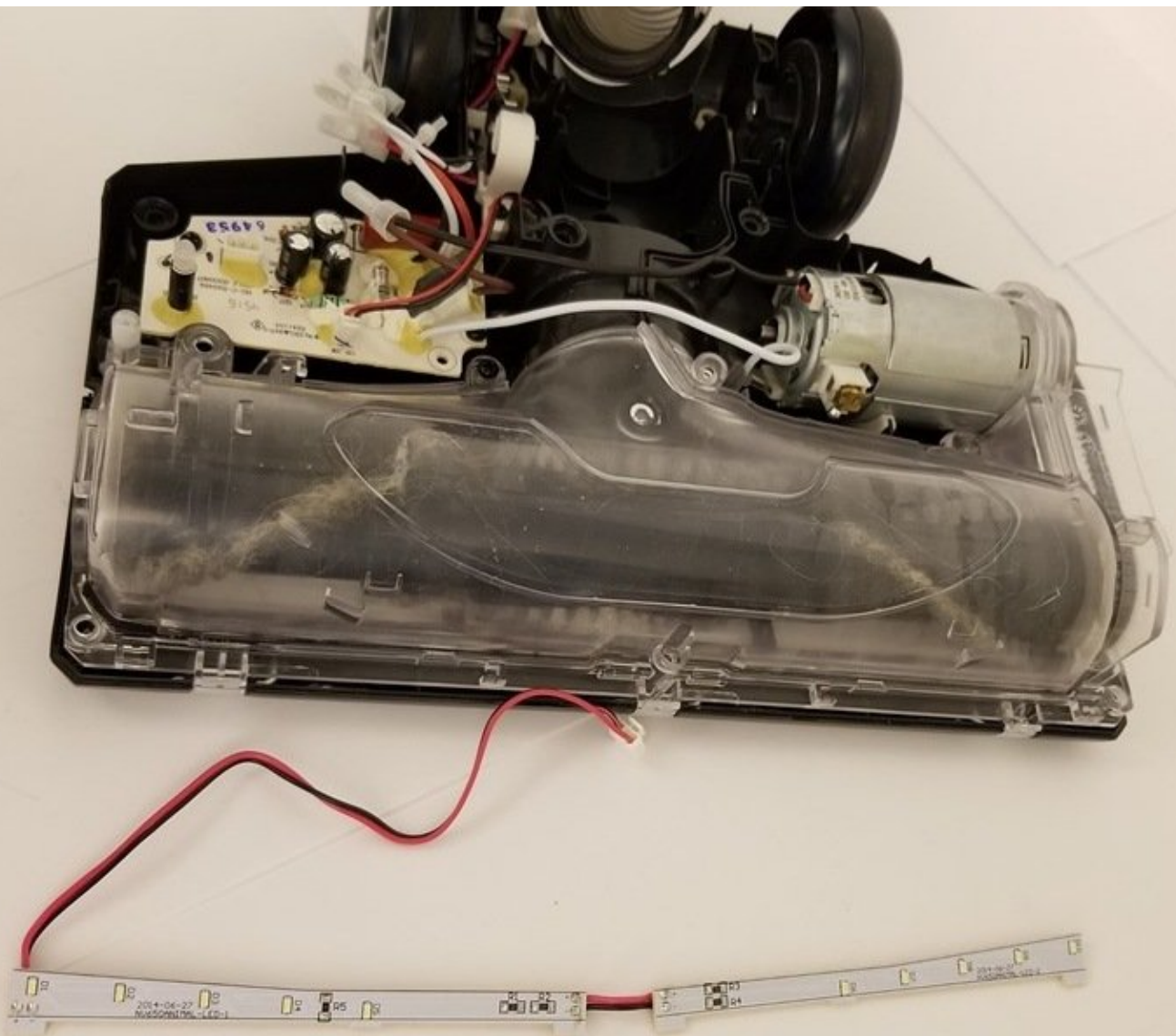




Shark Rotator Powered Lift-Away Headlight Replacement

When the vacuum is turned on, the headlights...

Written By: Diego Ruvalcaba



INTRODUCTION

When the vacuum is turned on, the headlights should simultaneously turn on.

If the headlights don't turn on, the lights can be inoperative due to electrical malfunctions or due to broken components.

Follow this guide to replace your Shark Rotator Powered Lift-Away headlights.



TOOLS:

- [64 Bit Driver Kit](#) (1)

you will need the Phillips, Flathead, and Torx drivers for the disassembly.



PARTS:

- [led-headlight-assembly-for-vacuum-nozzle/](#) (1)

Step 1 — Shark Rotator Powered Lift-Away Head Nozzle Disassembly



- Push the lift away button and pull the handle up to separate the body from the wand section.

Step 2



- Push lift away button on the wand then lift up on the top section to separate.

Step 3



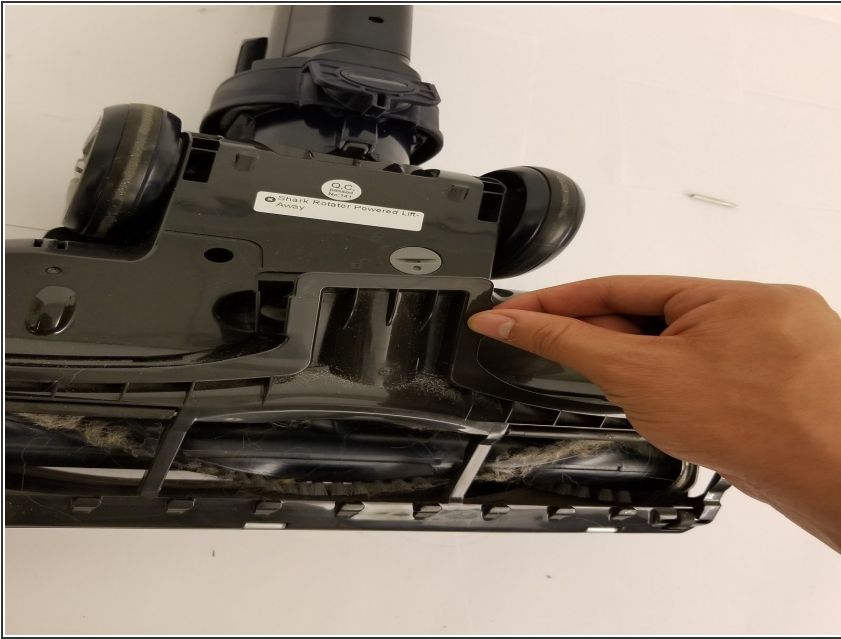
- Tilt the wand shaft backwards for convenient.

Step 4



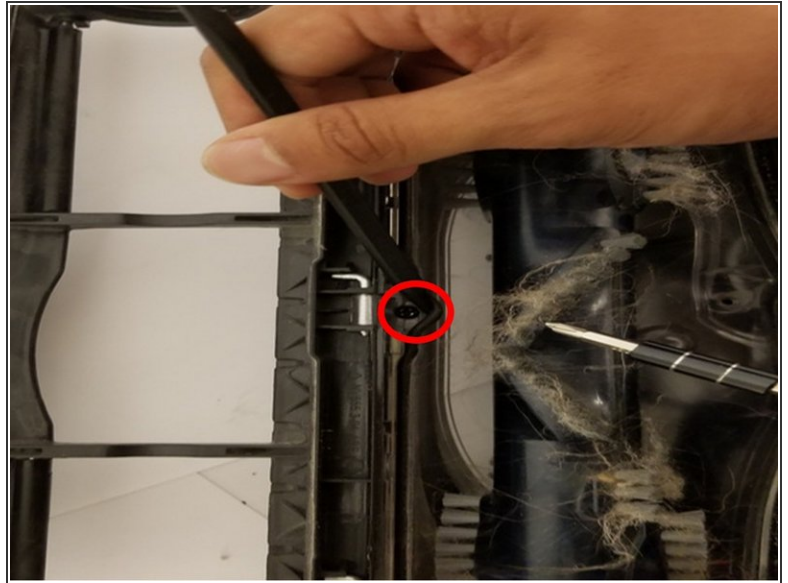
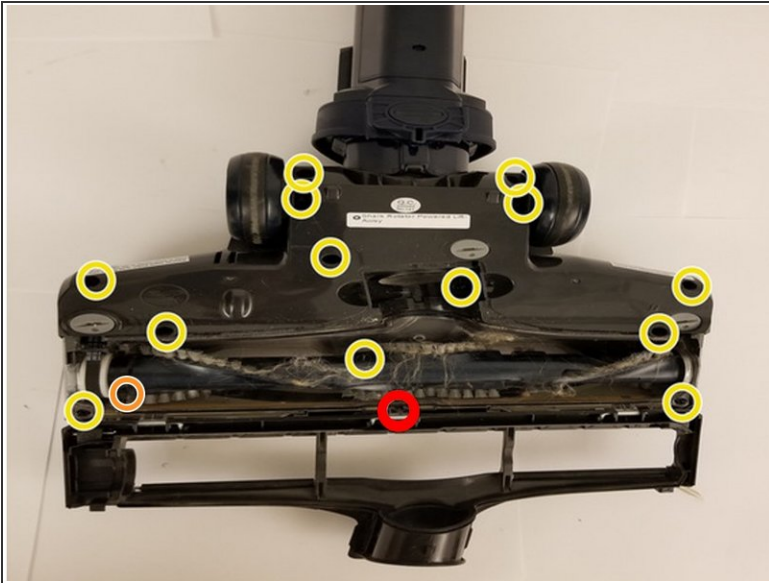
- Lay the head nozzle piece upside down.
- Rotate the three gray taps to the unlock position.

Step 5



- With your fingers, pry and pull the brush cage open.

Step 6



- Remove the 13 screws (circled in yellow) using a phillips screwdriver.

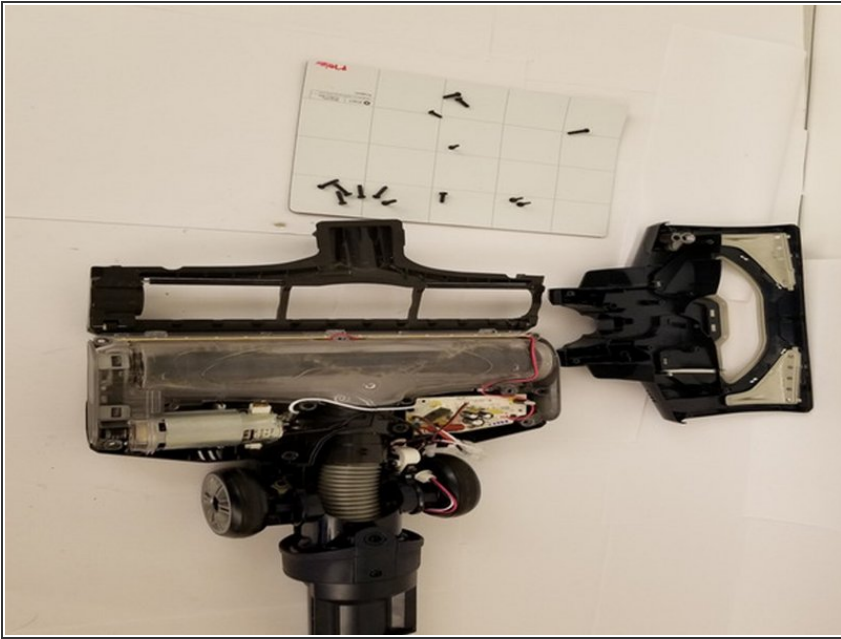
⚠ Be sure to keep track of which screws go into which hole.

- Remove the one screw (circled in red) that has a Torx head (might be Phillips head on some models).

⚠ The Torx screw is hidden under a rubber gasket. Carefully, lift up the gasket without damaging it to access this screw.

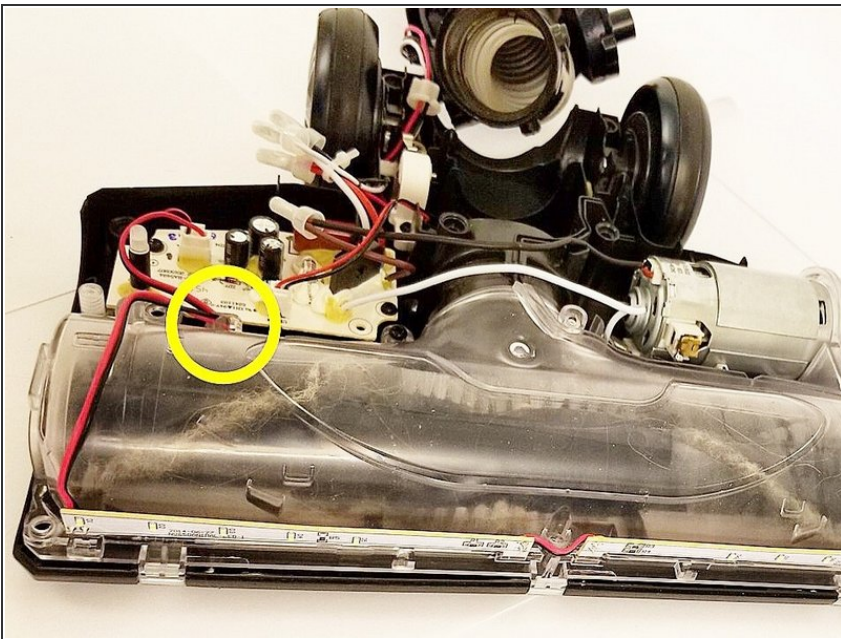
- Remove the horizontal screw (circled in orange) that attaches the gray side panel (necessary to remove the white cap on the roller brush in step 8)

Step 7



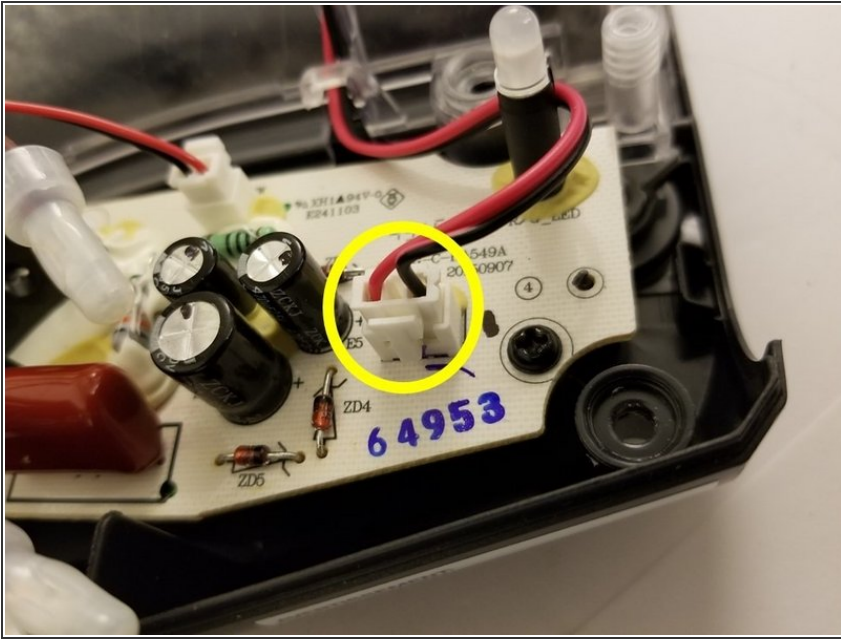
- Lift up the top cover now that all of the screws have been removed.

Step 8 — Headlights



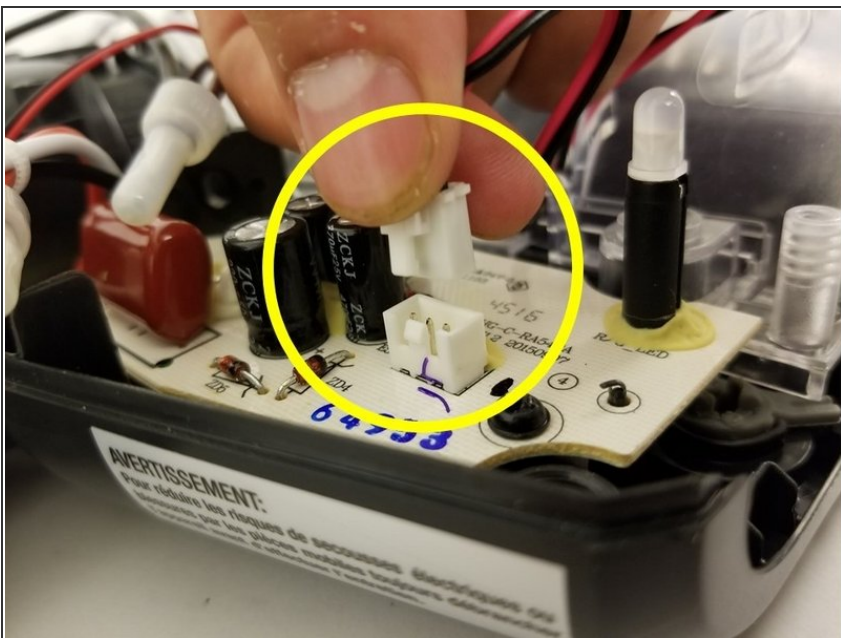
- Detach the headlight's red and black wires from plastic clip as shown.

Step 9



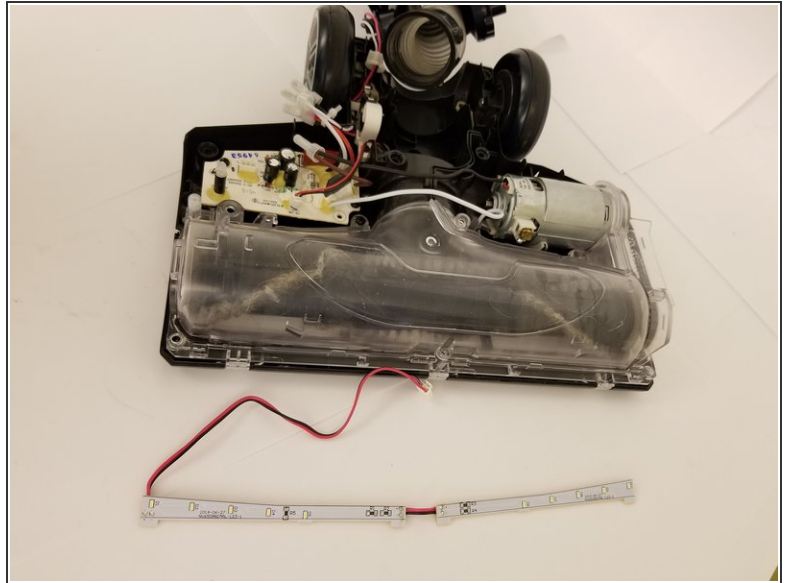
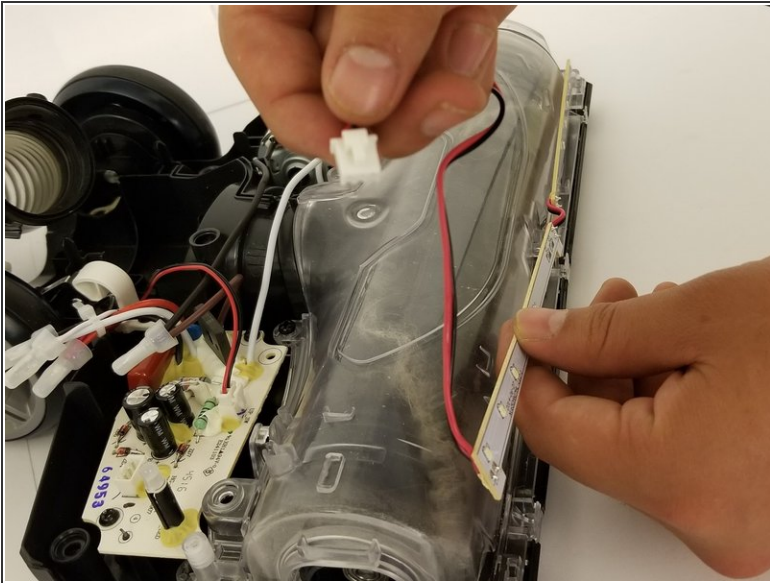
- Follow the headlight's red and black wires to the circuit board.

Step 10



- Unclip the 2-pin electrical connector by pressing the tab then lift up.

Step 11



- Carefully lift the headlights and its wires from the vacuum assembly.

To reassemble your device, follow these instructions in reverse order.