



# GE A1050 LCD Replacement

LCD Replacement for the GE A1050.

Written By: oldturkey03



## INTRODUCTION

The repair of the LCD is straight forward. No special skills or knowledge are required.



### TOOLS:

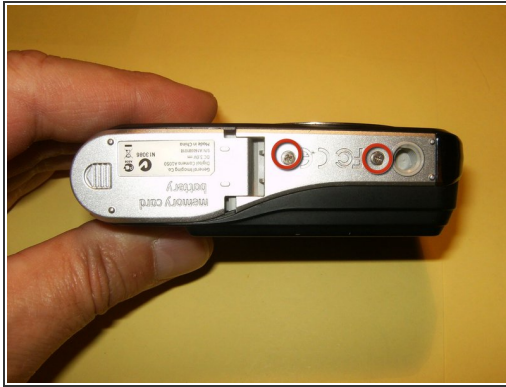
- [Phillips #00 Screwdriver](#) (1)



### PARTS:

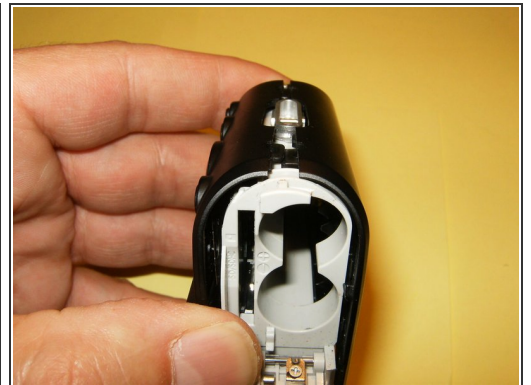
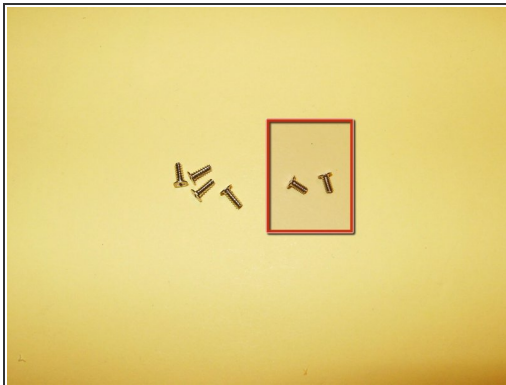
- [Replacement LCD](#) (1)

## Step 1 — LCD



- Remove the batteries, hand strap, and memory card if so equipped.
- Remove the two Phillips screws from the bottom.
- Remove the two Phillips screws from the left side.

## Step 2



- Remove the two screws from the right side.
- ⚠ The two screws from the left side are shorter than the ones from the right. Keep those separated.
- Start splitting the case from the battery compartment to the sides. No special tool is needed to split the case.



## Step 3



- Do not remove the back side of the case, just flip it over. The speaker is connected by wires to the main body, but positioned in the back case.
  - Flip the LCD to the bottom. You can not yet remove it, because it is still attached to the board.
  - The LCD cable is held into the connector via some compression clips. Move both ends carefully away from the connector, toward the LCD.
- ⚠ The clips only move about an 1/8 of an inch. Be careful not to use too much force.

## Step 4



- After exchanging the LCD for a new one, and after reassembling your camera, you should have a working LCD.

To reassemble your device, follow these instructions in reverse order.