



Xbox One Wireless Controller Model 1708

Cover Plate Replacement

This guide will teach you how to remove the...

Written By: Weston Gilmore



INTRODUCTION

This guide will teach you how to remove the front cover plate from your Xbox One wireless controller. Initially, no screws will be visible. Follow the steps to locate each factory screw.



TOOLS:

- [iFixit Opening Tool](#) (1)
- [TR9 Torx Security Screwdriver](#) (1)



PARTS:

- [Xbox One S Controller \(1708\) Front Panel](#) (1)
- [Xbox One S Controller \(1708\) Left Handle Cover](#) (1)
- [Xbox One S Controller \(1708\) Rear Panel](#) (1)

Step 1 — Cover Plate



- Slide the battery cover toward the top of the controller to remove it.
- Lift up the batteries or the battery pack from the battery compartment.

Step 2



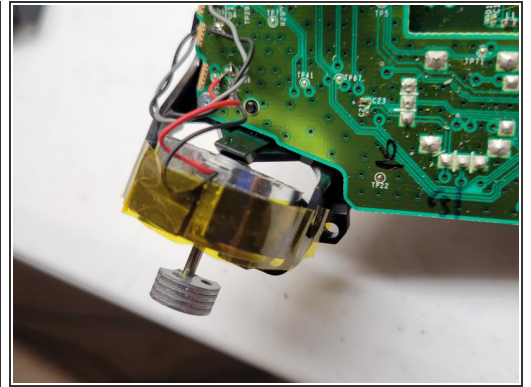
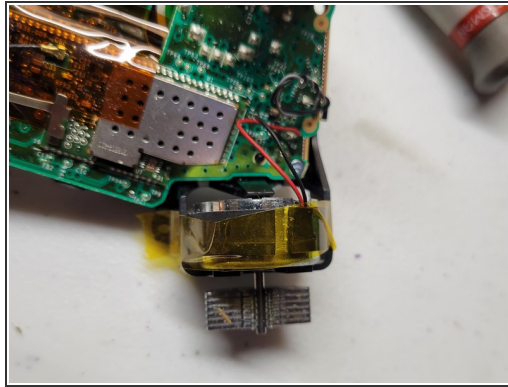
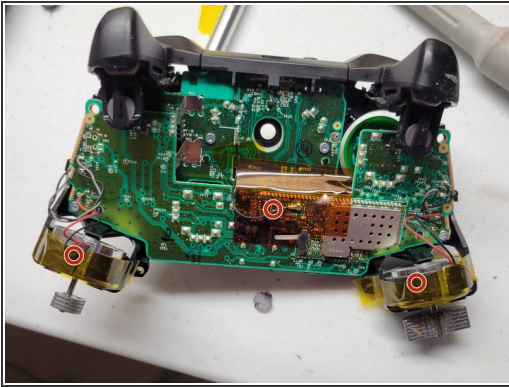
- Insert a plastic opening tool into the top seam, and gently work the opening tool to the bottom of the controller.
- Continue using the opening tool to gently pry the side plate off of the controller.
- Repeat this process for the second side plate.

Step 3



- Gently peel the battery label or punch a hole in the center of the sticker in the battery compartment to reveal the hidden screw.
- Remove the five 9mm torx-9 security screws from the back of the controller.

Step 4 — Tape Shock Motors in place



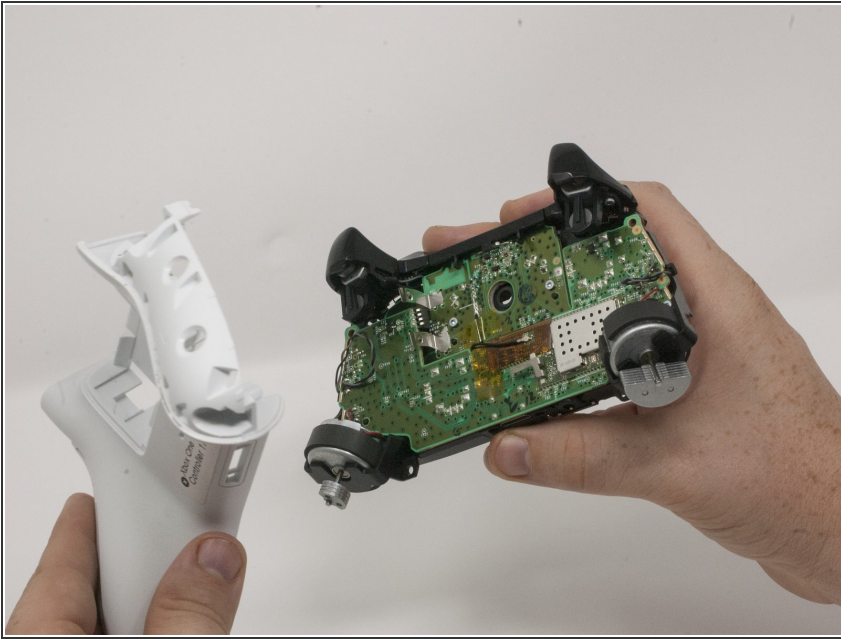
- Tape the Rumbler/shock motors in place.
- This will prevent the motors from falling out.

Step 5



- Orient the controller so the front plate is facing up.
- Lift the front cover off of the controller.

Step 6



- Turn the controller face down and gently lift the rear plate.

⚠ Be careful with the rumble motors, as they tend to fall out, risking damage to the motherboard.

To reassemble your device, follow these instructions in reverse order.