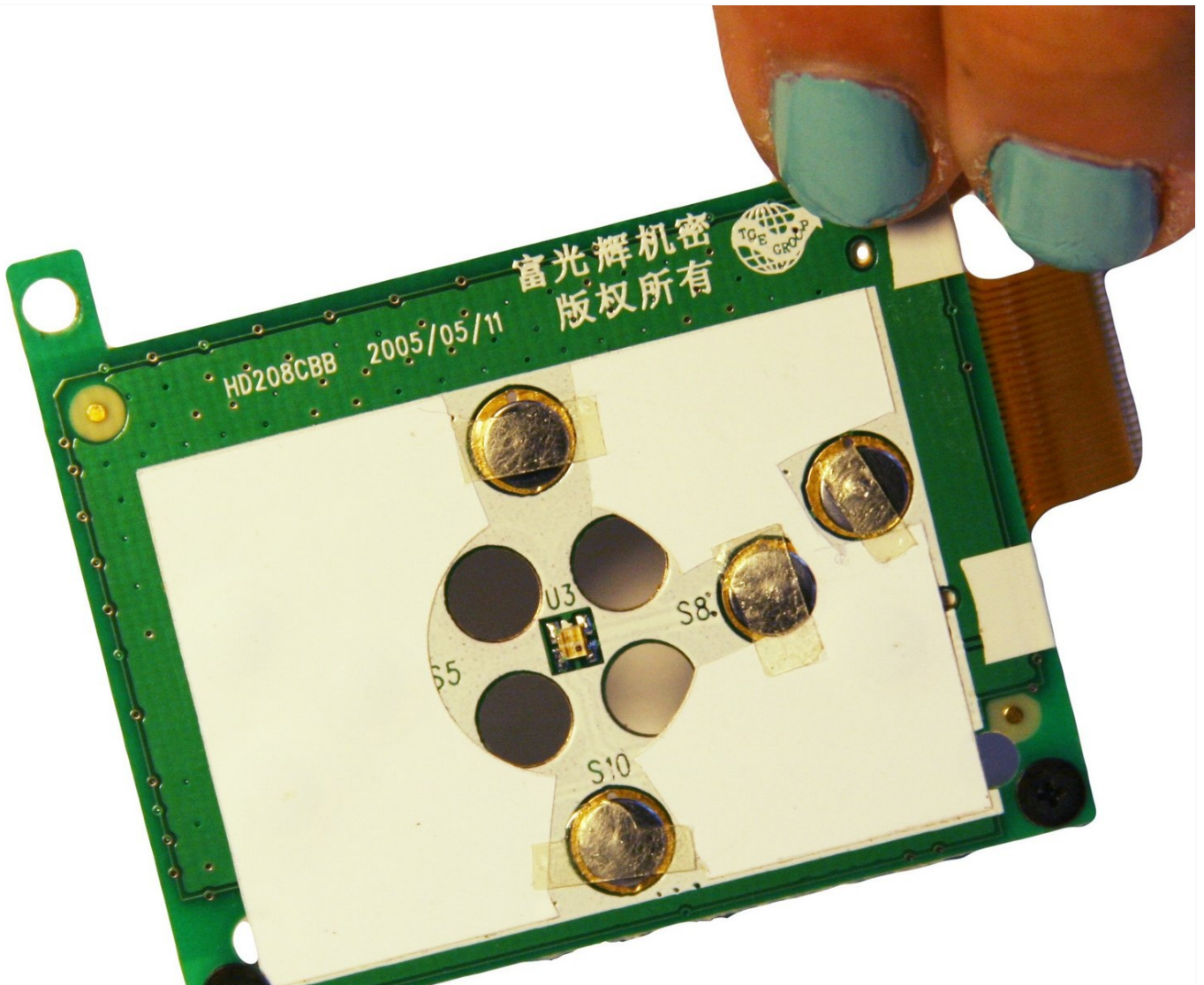




# Cirago M9030 Button Module Replacement

Use this guide to replace a faulty Button...

Written By: Ryan Sutardji



# INTRODUCTION

Use this guide to replace a faulty Button Module. This guide will be providing the necessary information pertaining to taking apart and rebuilding the module. Button modules are designed to detect when a button is pressed or released. They often provide a way to trigger events or actions in response to button presses. For example, in software development, pressing a button could trigger a specific function or command execution. Button modules are widely used in user interfaces to facilitate user interaction. They can be used for various purposes such as menu navigation, form submission, or controlling electronic devices. Button modules are designed to detect when a button is pressed or released. They often provide a way to trigger events or actions in response to button presses. For example, in software development, pressing a button could trigger a specific function or command execution. Button modules are widely used in user interfaces to facilitate user interaction. They can be used for various purposes such as menu navigation, form submission, or controlling electronic devices.

This repair might be needed because a majority of the time, the functionality of a device is based on this factor.

---

## **TOOLS:**

[iFixit Opening Tool](#) (1)

[Tweezers](#) (1)

[Phillips #00 Screwdriver](#) (1)

---

## Step 1 — Cover



- Use a Phillips #00 screwdriver to unscrew the four 1.1mm long screws on each corner located at the top of the cover.

## Step 2



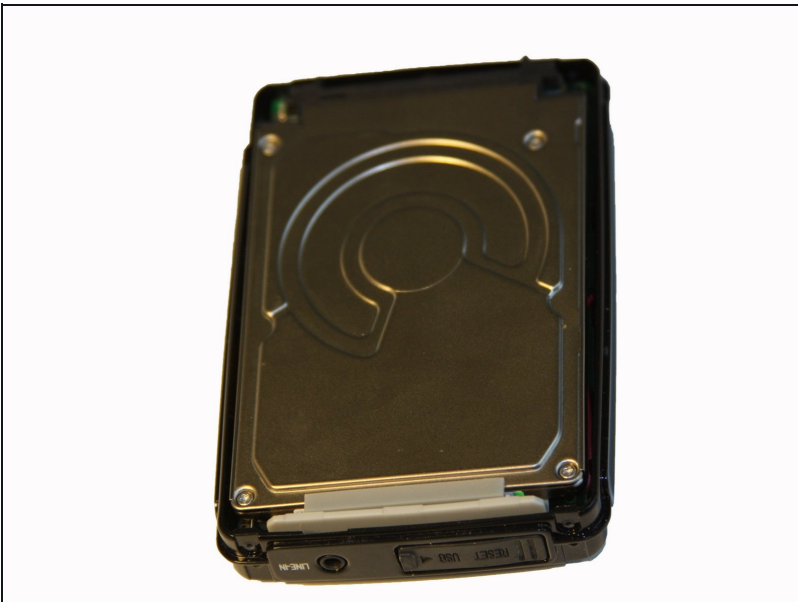
- Similar to the last step, flip the cover over and use a Phillips #00 screwdriver to unscrew the four 1.1mm long screws on each corner located at the bottom of the cover.
- Remove the warranty sticker across the bottom.

### Step 3



- Gently take the cover apart using your hands separating the top and bottom.
- The outer shell is expected to easily come apart.

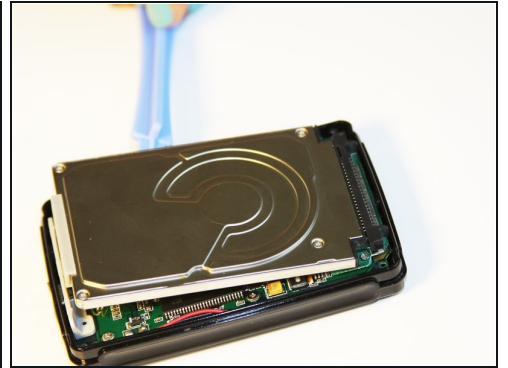
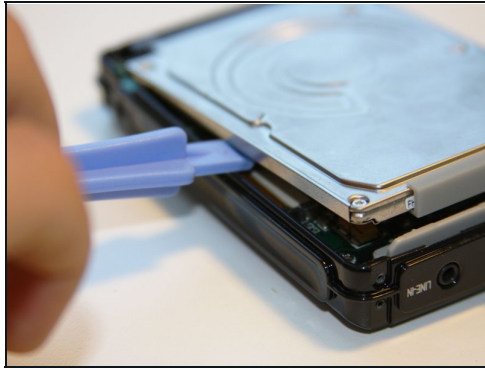
### Step 4 — Hard Drive



- Make sure that the screen of the device is facing down.

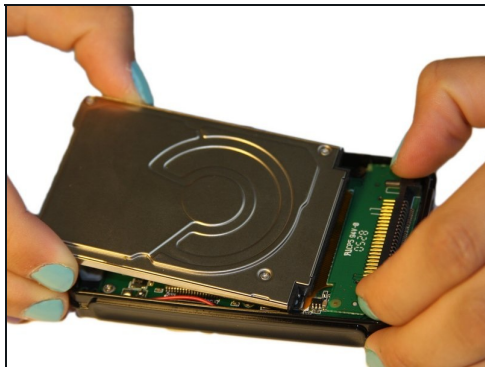
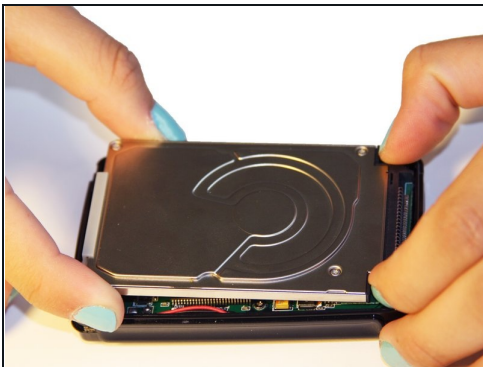


## Step 5



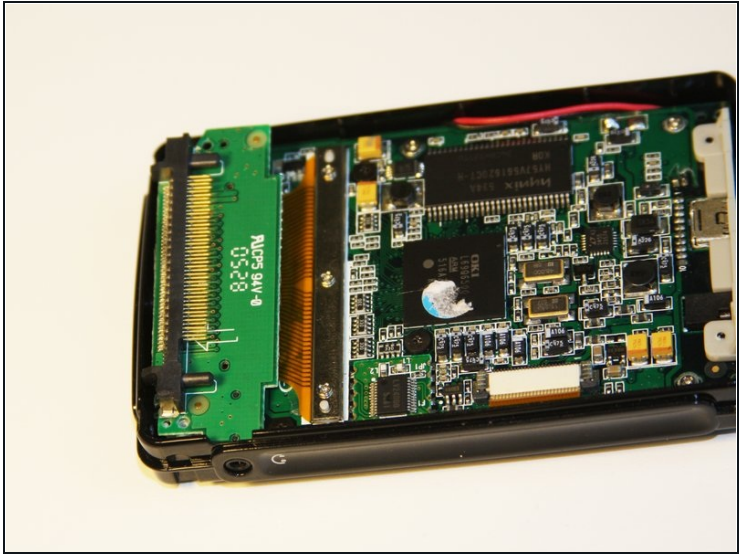
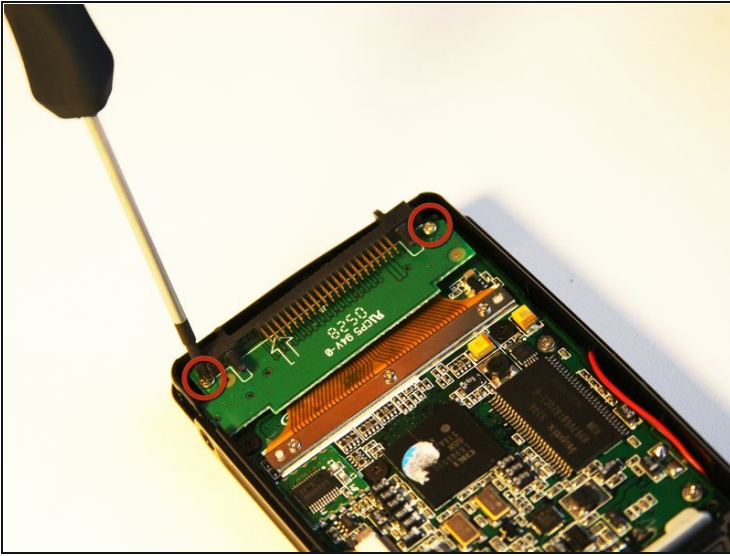
- Using the plastic opening tool, wedge the tool underneath the bottom left edge of the hard drive.
- Raise the bottom edge of the hard drive 15 degrees up from the device.

## Step 6



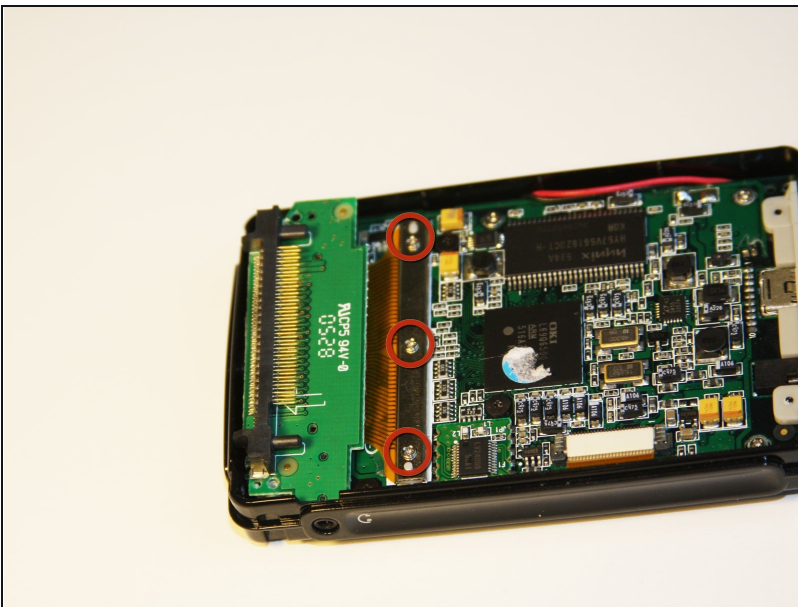
- Place fingers on the IDE connectors gently picking up and sliding the hard drive out from the IDE module.

## Step 7 — IDE Connector



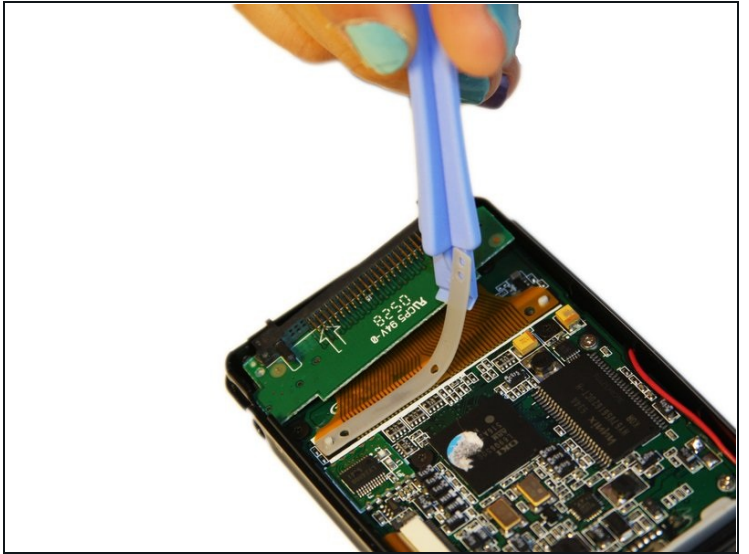
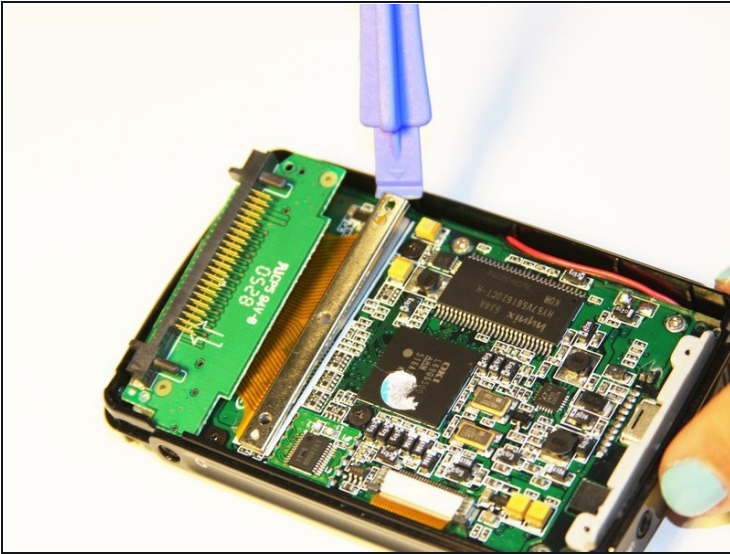
- Using the Phillips #00 screwdriver, unscrew the two 1.5mm long screws holding the IDE connector to the motherboard located at the top.

## Step 8



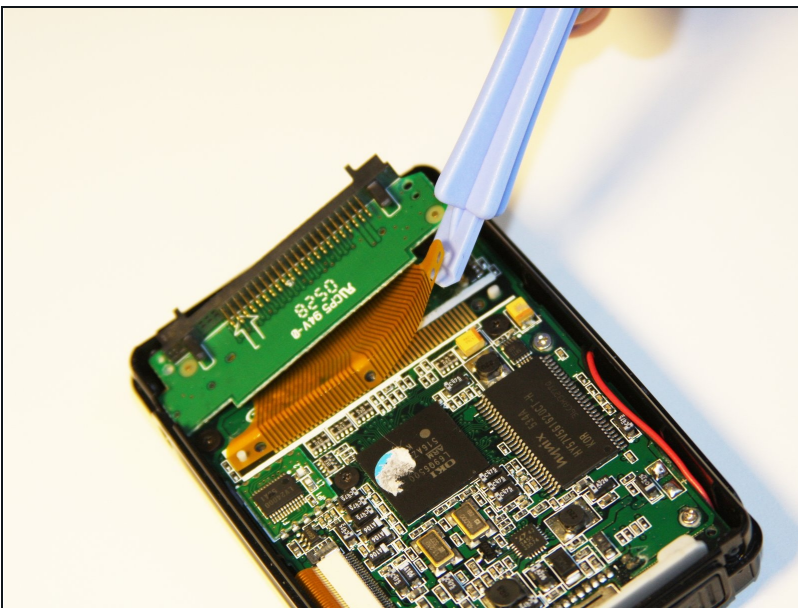
- Using the Phillips #00 screwdriver, unscrew the three 1.5mm long screws on the metal bracket.

## Step 9



- Using the plastic opening tool, completely lift the metal bracket off of the motherboard.
- Using the plastic opening tool, completely lift the rubber insulator off of the motherboard.

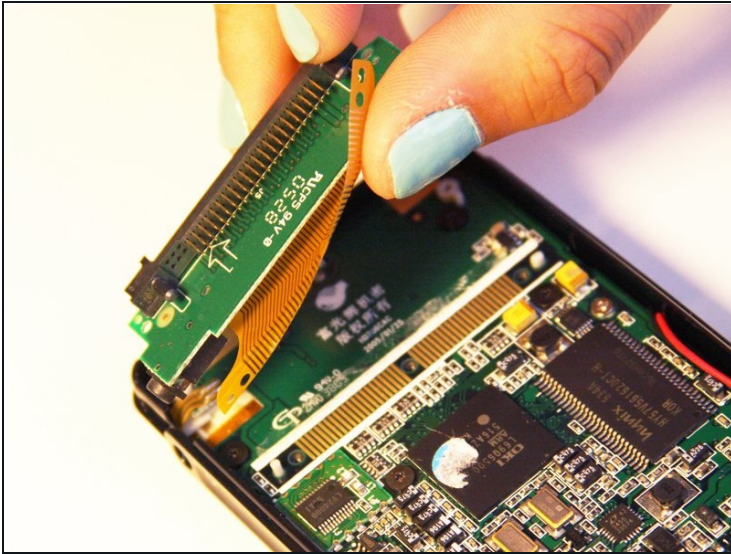
## Step 10



- Using the plastic opening tool, completely lift the ribbon off of the motherboard.



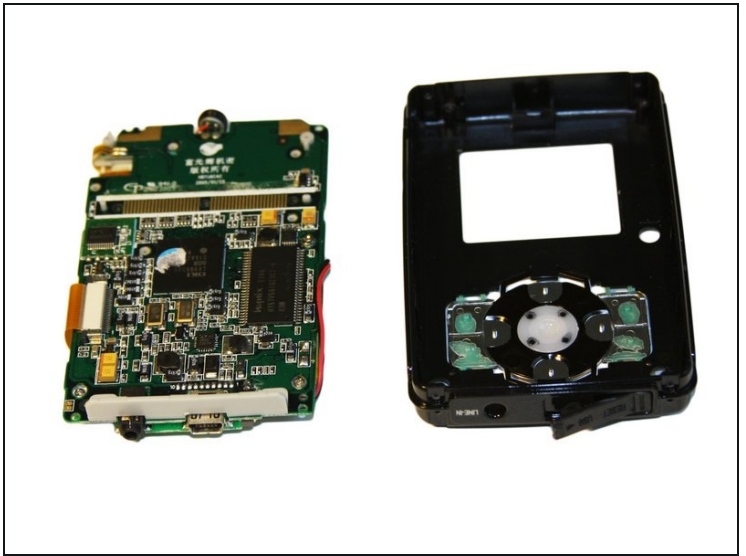
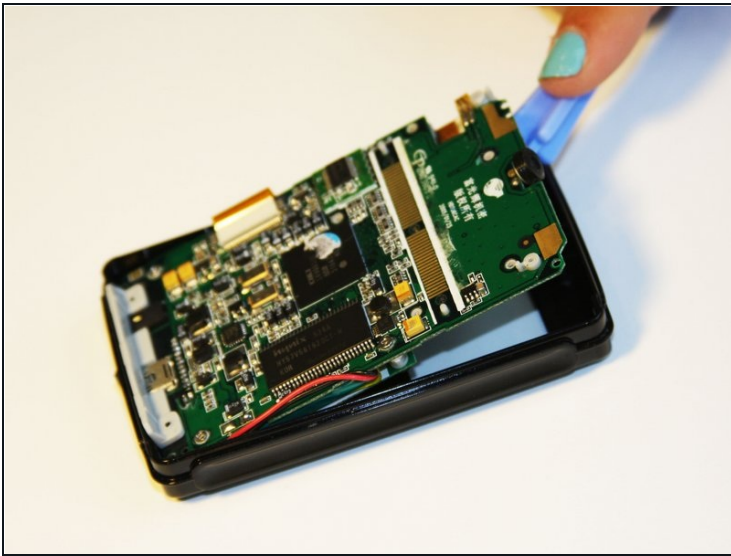
## Step 11



- Completely remove the IDE connector from the device.
- The audio jack is attached to the IDE connector. Pull at a 45 degree angle from the audio jack.

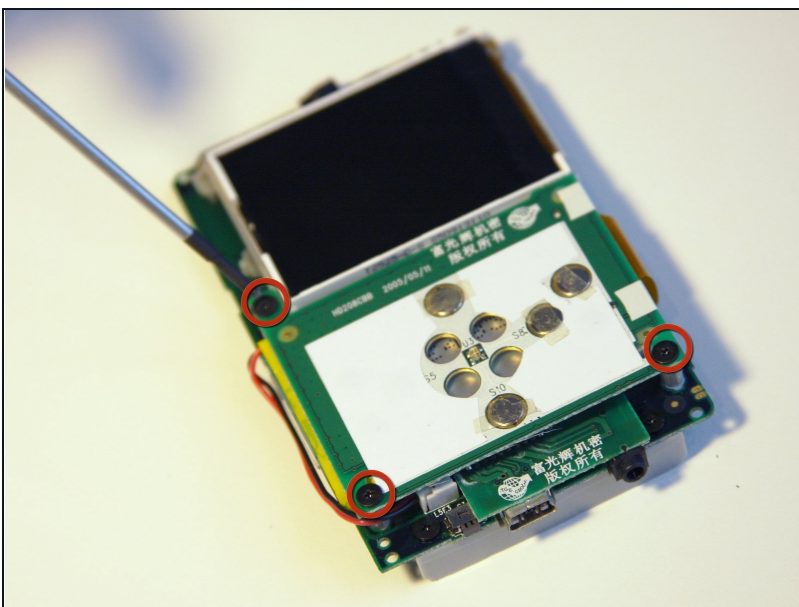


## Step 12 — Motherboard



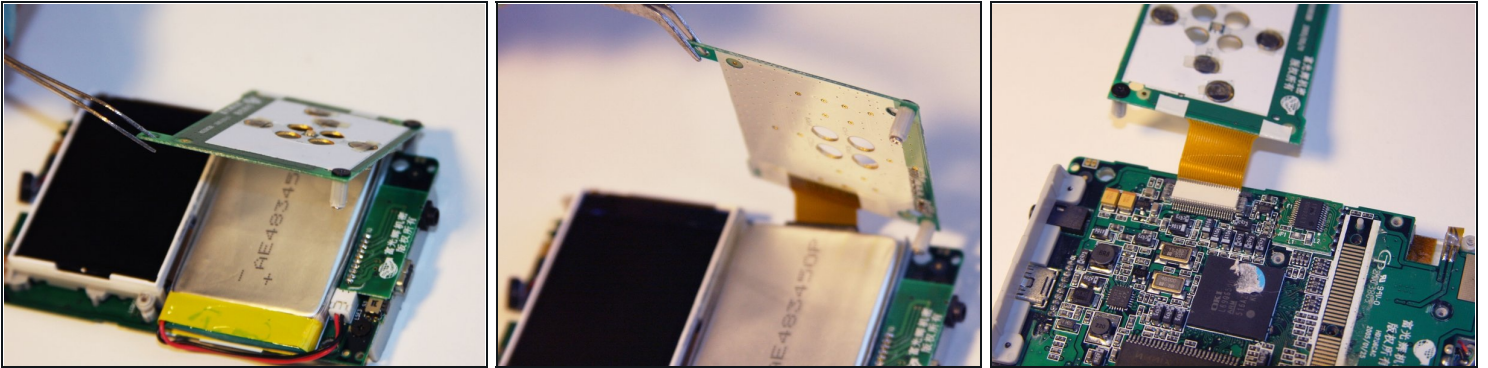
- Using the plastic opening tool, wedge the tool underneath the top edge of the motherboard.
- Completely remove the motherboard.
- ① The motherboard should slide out easily.

## Step 13 — Button Module



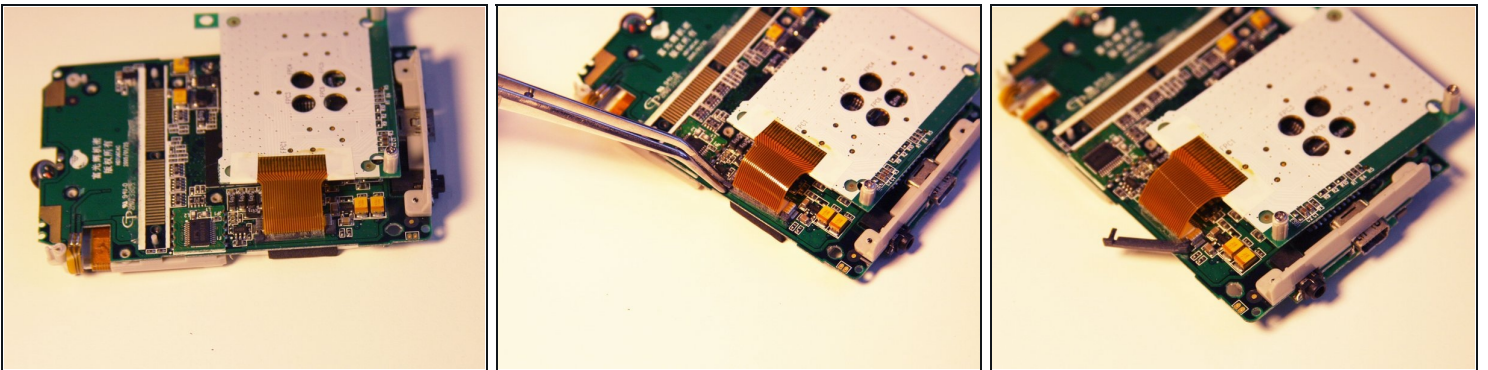
- Set aside the front cover.
- Flip over the motherboard.
- Using the Philips #00 screwdriver, remove the three 4mm long screws holding down the button module.

## Step 14



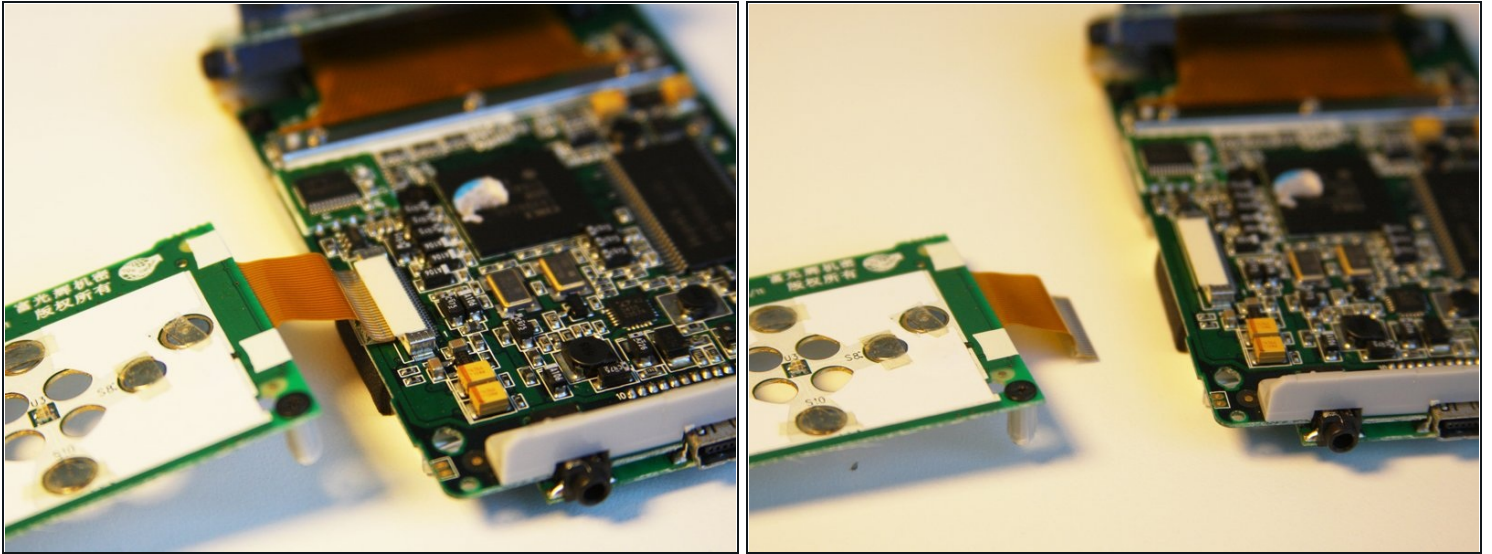
- Using the tweezers, lift up the button module to a 180 degree angle.
- ☑ Leave the button module attached by the ribbon.
- Flip over the motherboard with the button module still attached.

## Step 15



- Fold the button module over the motherboard.
- Using the tweezers, remove the ribbon pin.
- ① The ribbon pin should snap completely off of the motherboard.

## Step 16



- The ribbon should easily detach from the motherboard.

---

To reassemble your device, follow these instructions in reverse order.