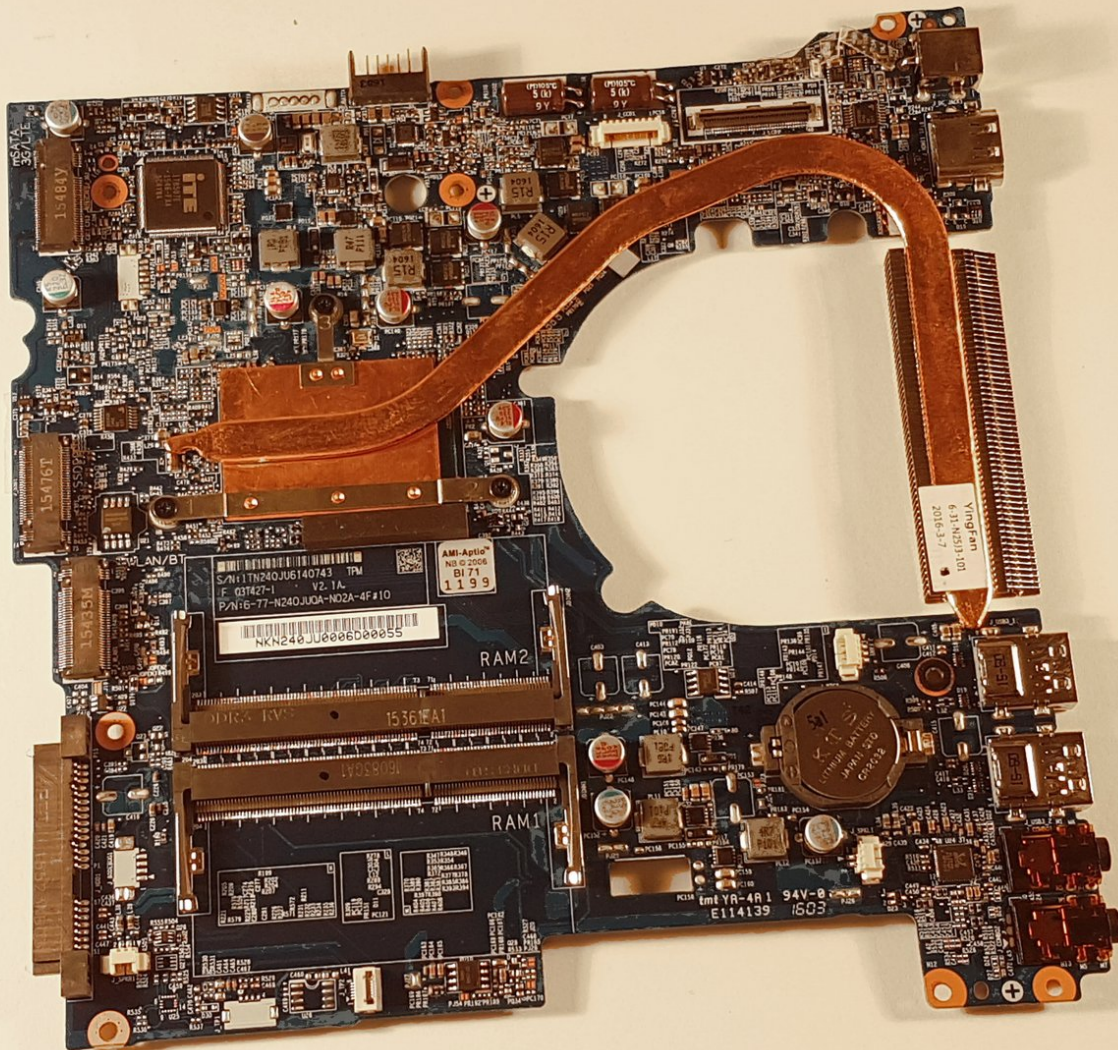




why! N240JU Replacement motherboard

Written By: Felice Suglia





TOOLS:

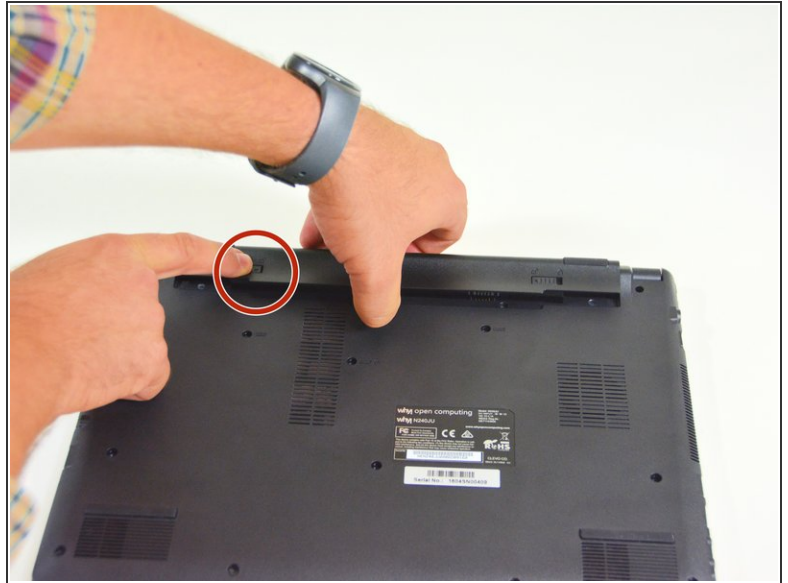
- [Tournevis Cruciforme PH1](#) (1)



PARTS:

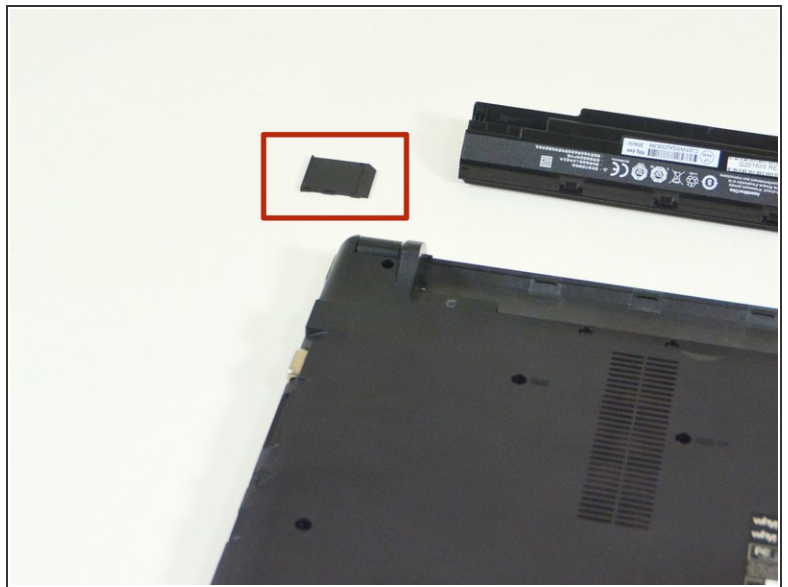
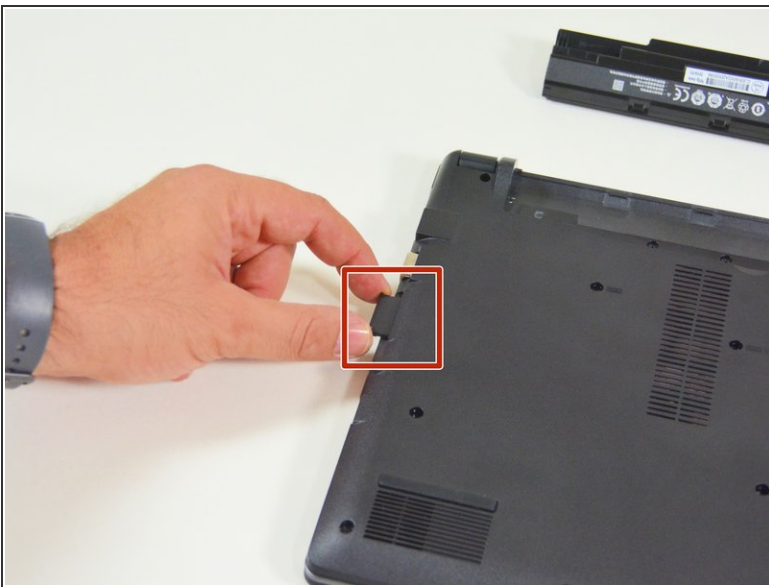
- [New Item](#) (1)
- [New Item](#) (1)
- [New Item](#) (1)
- [New Item](#) (1)

Step 1 — Battery



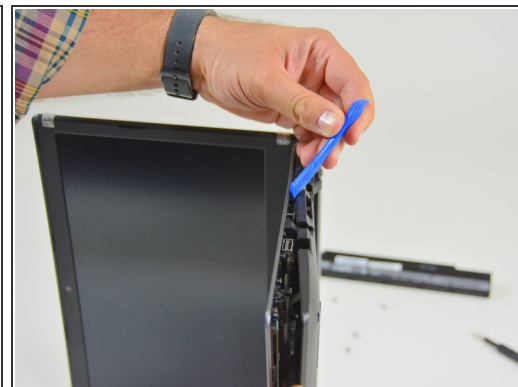
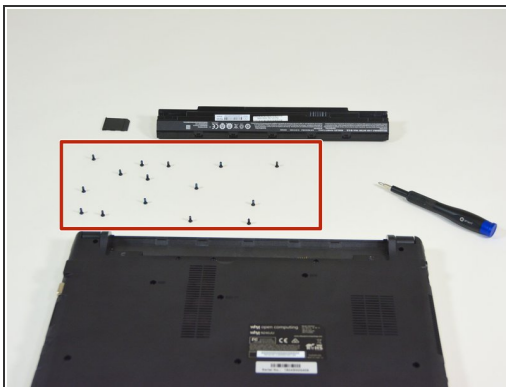
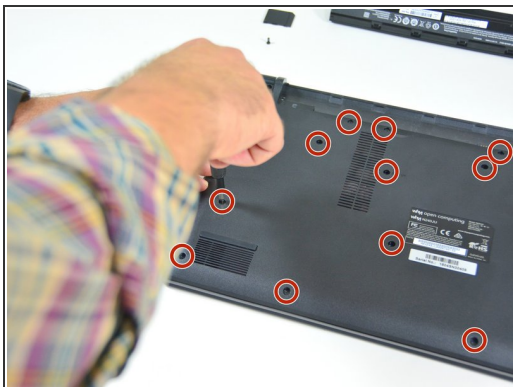
- Start by unlocking the right locking latch.
- Then, by simultaneously unlocking the left latch, lift the battery out of its socket.

Step 2 — Access to main components



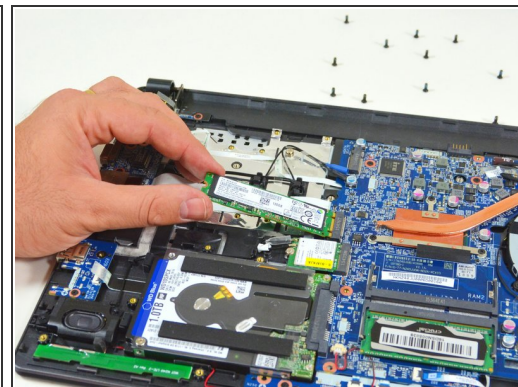
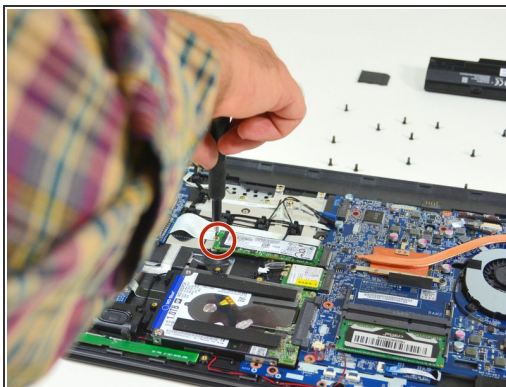
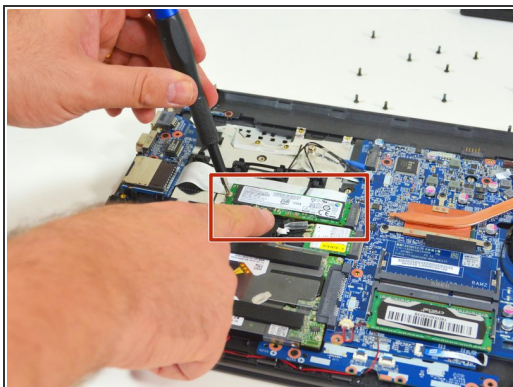
- Begin by spotting the dummy memory card.
- Then, remove it and put it on your workplan.

Step 3



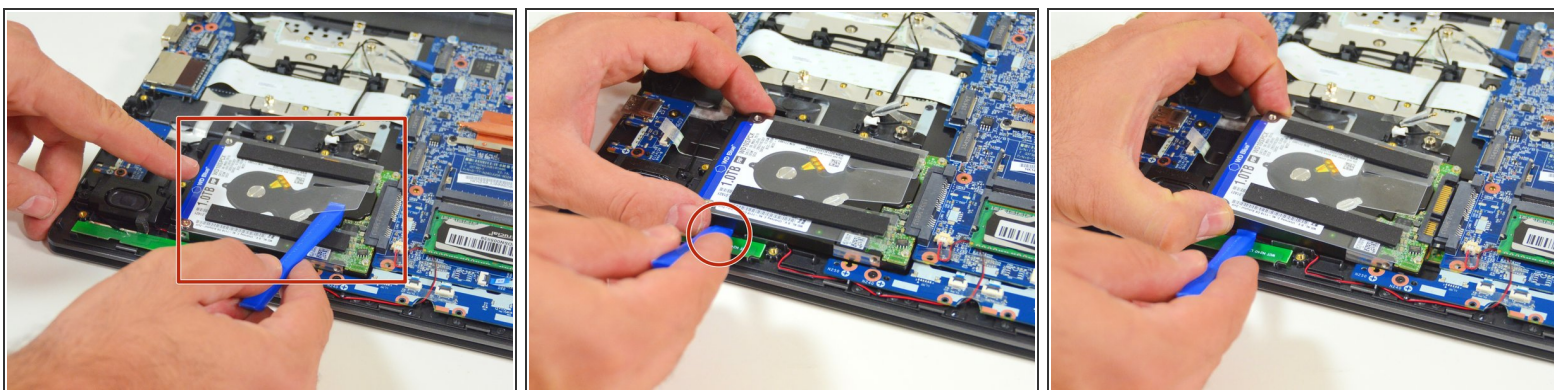
- Locate the 15 screws that hold the bottom cover of the device in place.
- Unscrew them and place them on your work surface.
- Then, un-clip the bottom cover, starting with the side shown in the third picture.

Step 4 — SSD M.2 disk



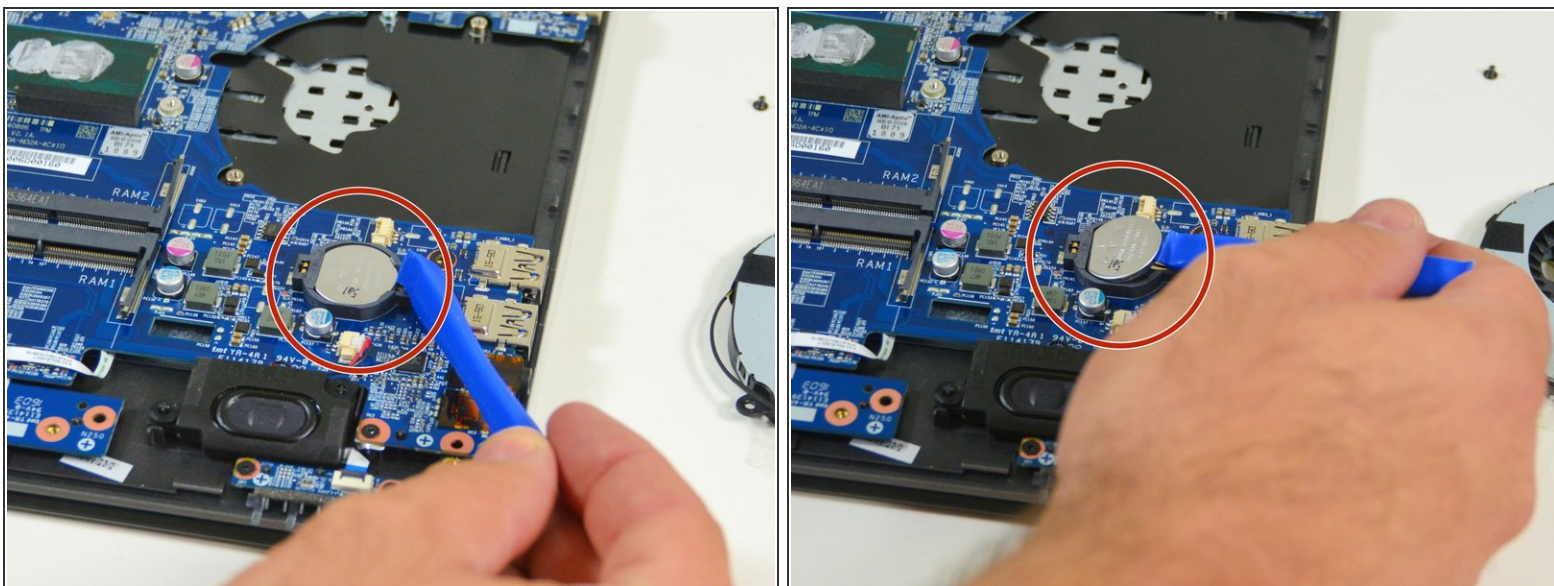
- Locate the M.2 SSD in its slot.
- Unscrew the fastening screw of the latter.
- Lift and remove the SSD M.2 drive from its connector.

Step 5 — Hard disk (mass storage)



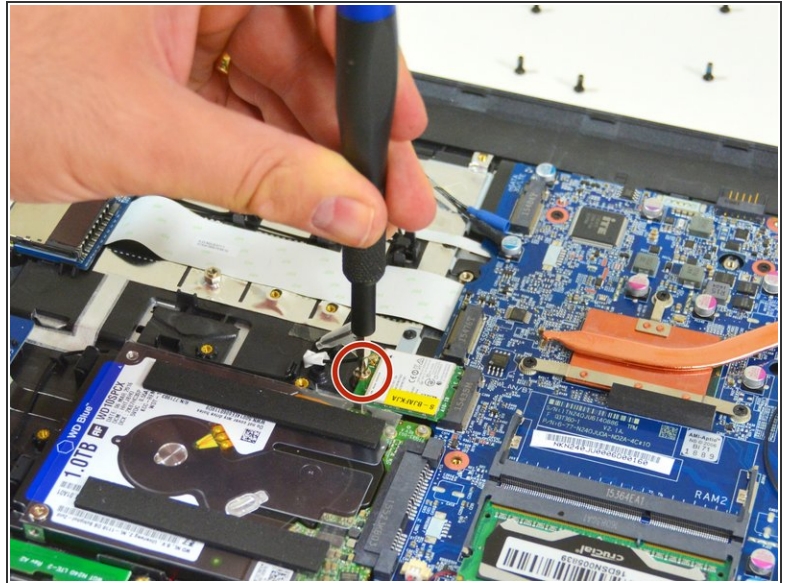
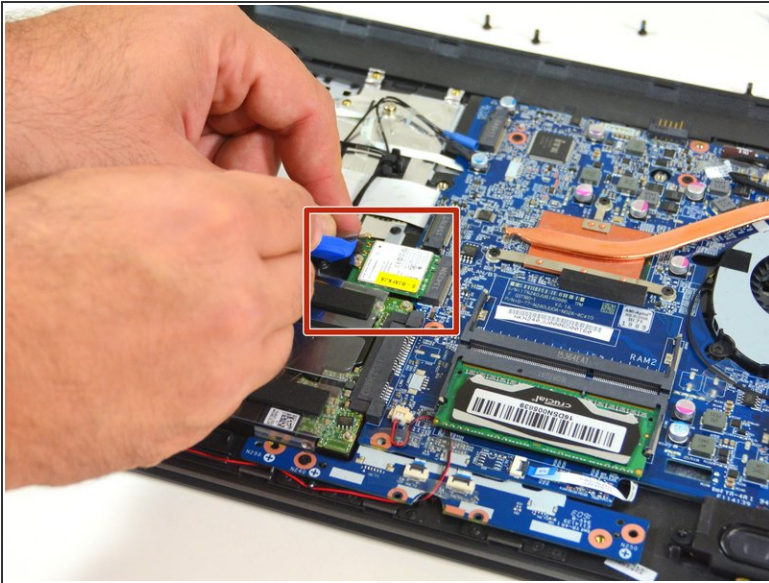
- Locate the hard drive in its location.
- Lift it slightly.
- Finally remove it from its SATA connector.

Step 6 — BIOS stack



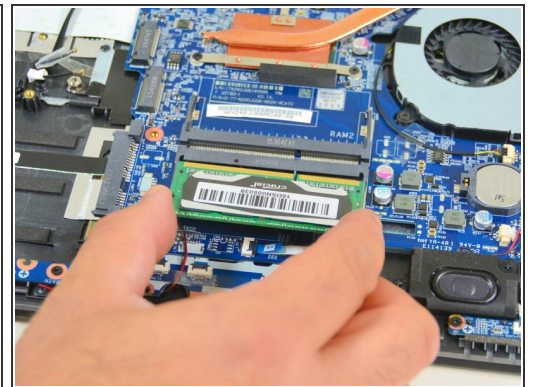
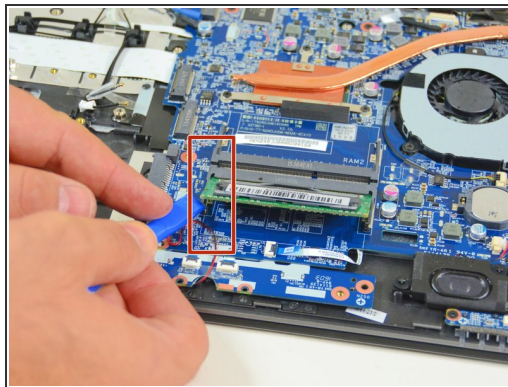
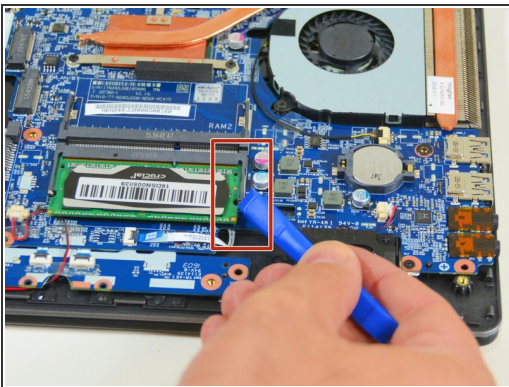
- To reassemble your device, follow the instructions in reverse order.
- Lift it gently and take it out of its place.

Step 7 — WLAN card



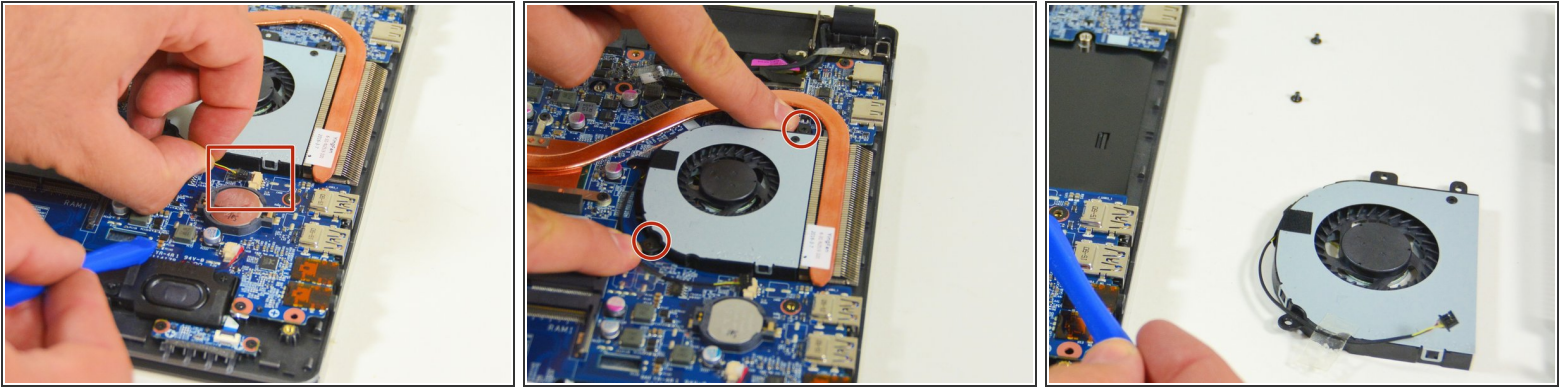
- Carefully unplug the MAIN and AUX antennas.
- Unscrew the fixing screw with the Philips # 0 screwdriver. Then lift the chipset slightly and remove it from the connector.

Step 8 — RAM Memory



- Find and separate the spring blades that maintain the memory module in place (right).
- Find and separate the spring blades that maintain the memory module in place (left).
- Remove the memory module (RAM) from its connector.

Step 9 — The fan



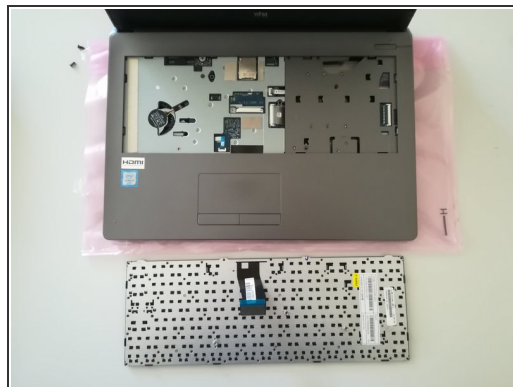
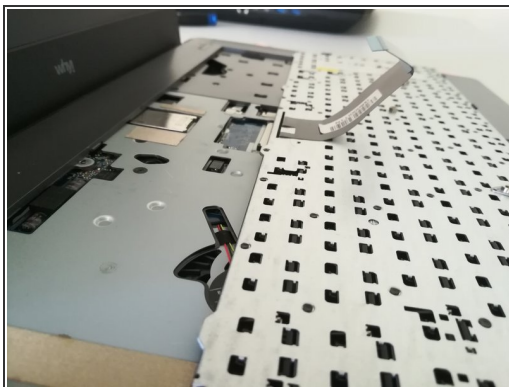
- Remove the power cable from the fan.
- Unscrew the two screws securing the fan.
- Finally remove the fan and place it on your worktop.

Step 10 — The keyboard



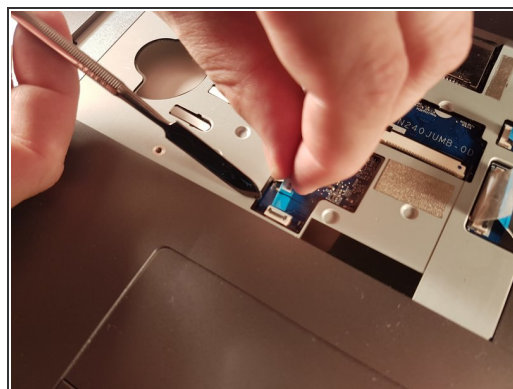
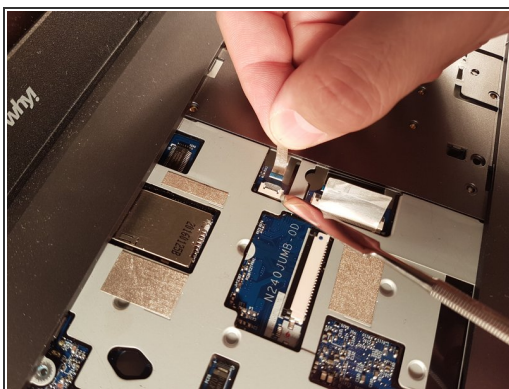
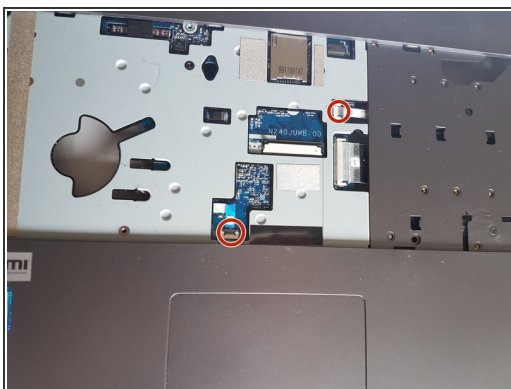
- Unscrew the circled screws in green and red
- Put the computer in the position of the second image while pushing a paper clip into the hole of the screw circled in green until you hear a click
- Lift the keyboard

Step 11



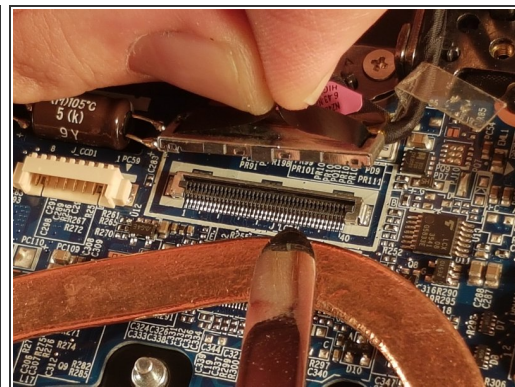
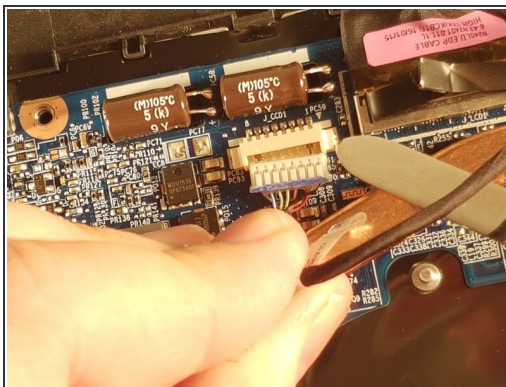
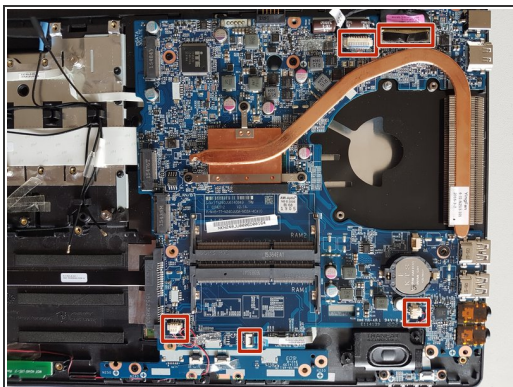
- Disconnect the connector circled in red in the direction of the arrow

Step 12 — Motherboard



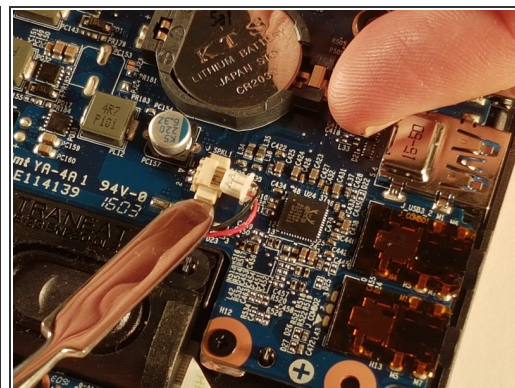
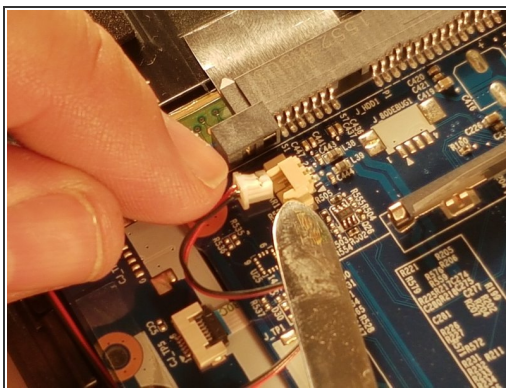
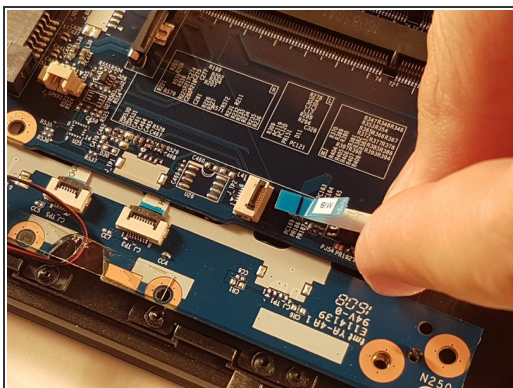
- Locate the two flat cables and remove them carefully.

Step 13



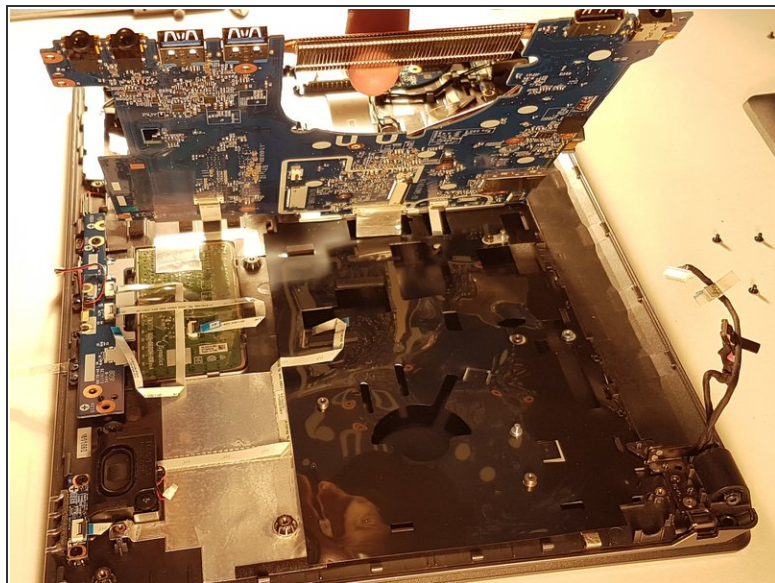
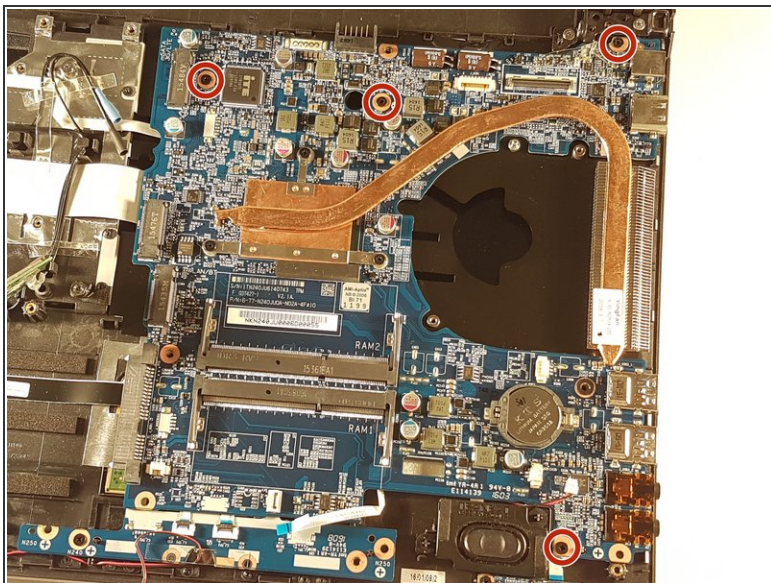
- Locate the five connectors on the motherboard
- Unplug all connectors

Step 14



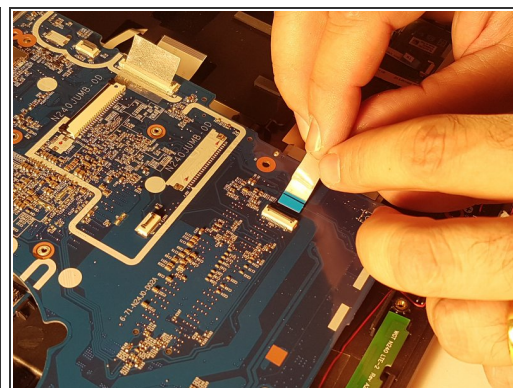
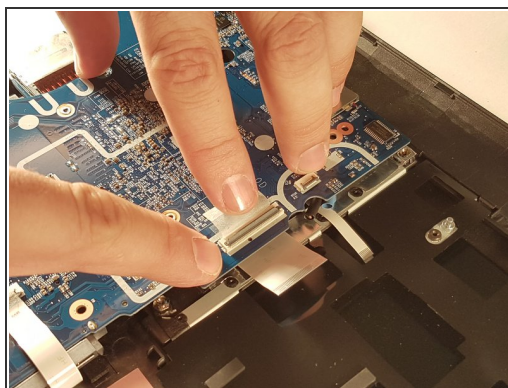
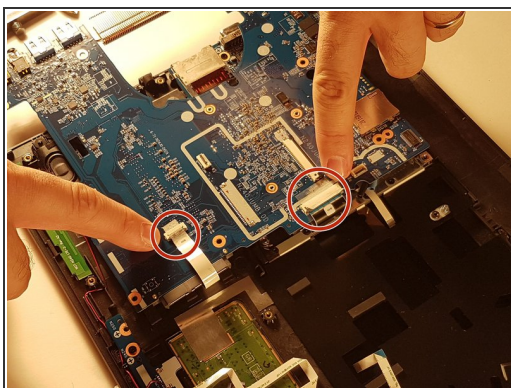
- Unplug all connectors

Step 15



- Unscrew the four screws circled in red
- Lift the motherboard by taking it through the radiator

Step 16



- Disconnect the two connectors circled in red

To reassemble your device, follow the instructions in reverse order.