



# PCIe Fan Replacement guide

Replace a Faulty PCIe Fan

Written By: Andrew Damiani



# INTRODUCTION

Replace a Faulty PCIe Fan



## TOOLS:

Phillips #1 Screwdriver (1)

### Step 1 — Side Panel Removal



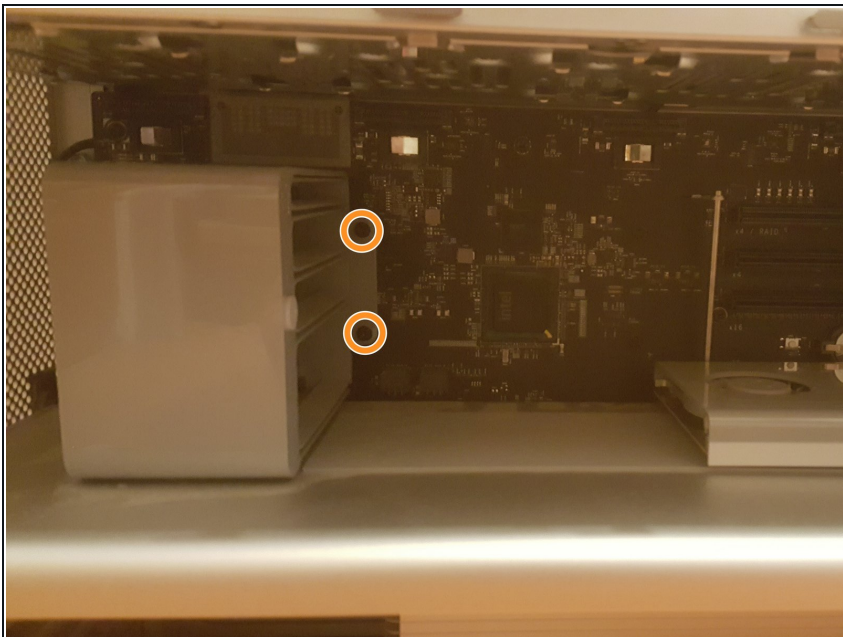
- Begin by pulling up on the lever located at the back of the computer to remove the side panel.

## Step 2 — Hard drive removal



- Gently pull outward on each of the four hard drive trays to remove them.

## Step 3 — Fan Removal



- Remove the two 10mm PH #1 screws holding in the PCIe fan.
- ⚠ They are very tightened, if you do it wrong the screw might get stripped.

## Step 4 — Fan Removal



- Gently pull the fan straight outward to remove it.

---

To reassemble your device, follow these instructions in reverse order.