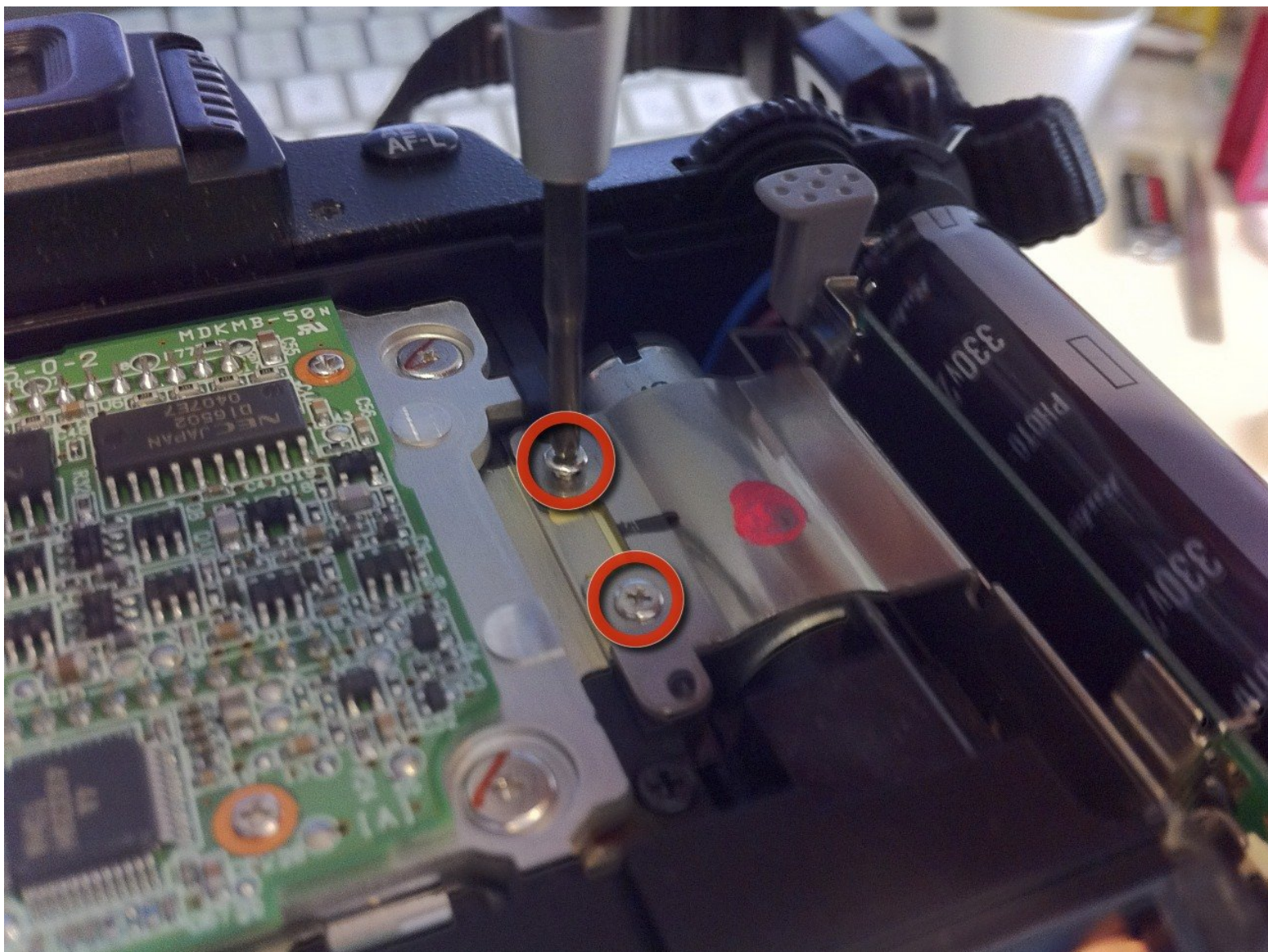




Nikon D70 CF Slot Replacement

If you get some CHA - errors on your Camera, this is the solution.

Written By: joergkihm



INTRODUCTION

If you get some CHA - errors on your Camera, it is likely time to replace the CF slot. The part number of the Nikon D70 CF slot is 1F998-181.



TOOLS:

- [Phillips #00 Screwdriver](#) (1)
- [Tweezers](#) (1)



PARTS:

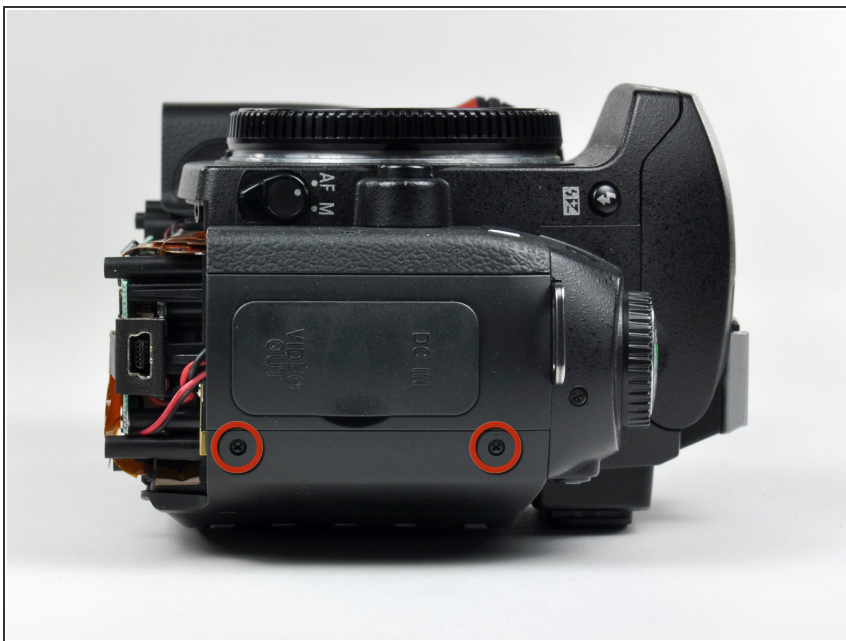
- [Nikon D70 CF Slot / The part number is 1F998-181](#) (1)

Step 1 — Rear Cover Assembly



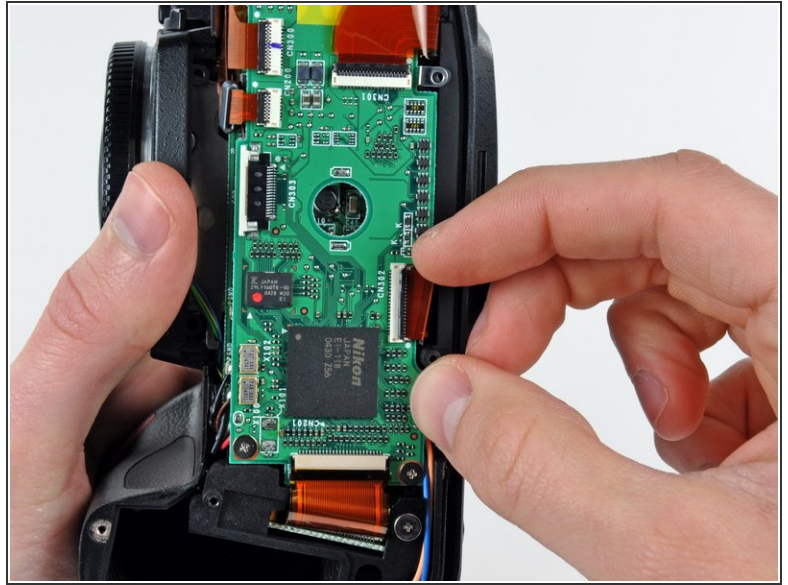
- Remove the two 4.8 mm Phillips screws securing the battery side of the rear cover to the D70.

Step 2



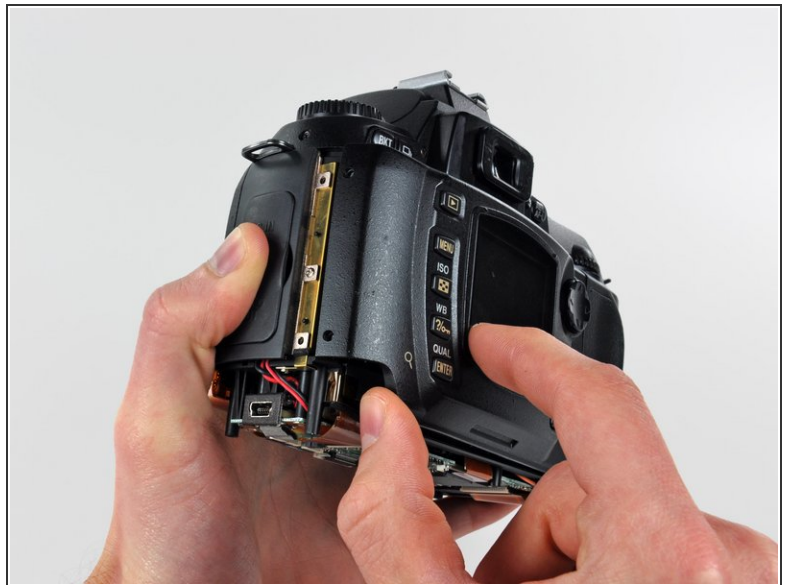
- Remove the two 4.8 mm Phillips screws securing the port side of the rear cover to the D70.

Step 3



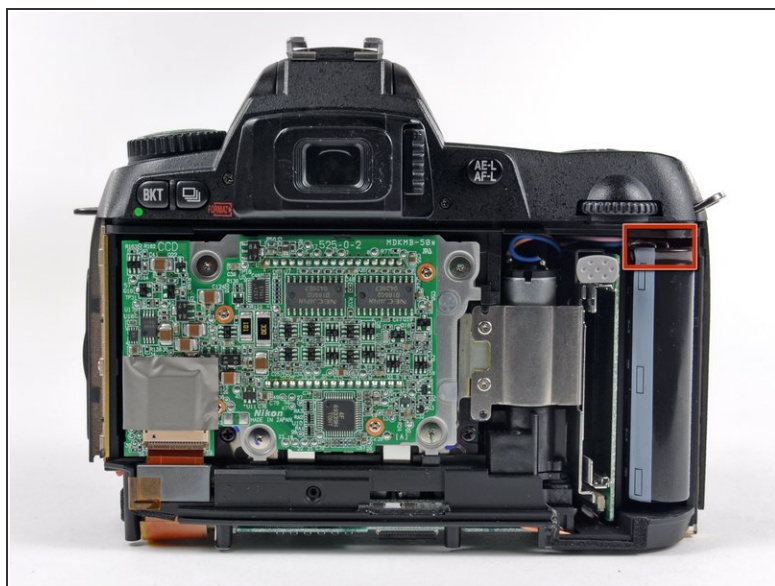
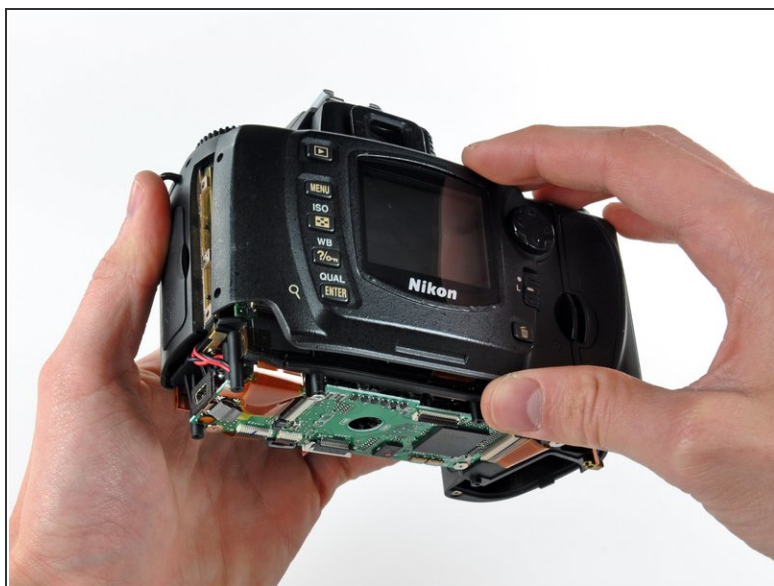
- Use your fingernail to flip up the ZIF locking flap on the LCD ribbon cable socket.
- ⚠ Be sure you are opening the locking tab, not pulling against the socket mounted to the board.
- Pull the LCD board ribbon cable out of its socket.

Step 4



- Carefully pull the sides of the rear cover away from the body of the D70.

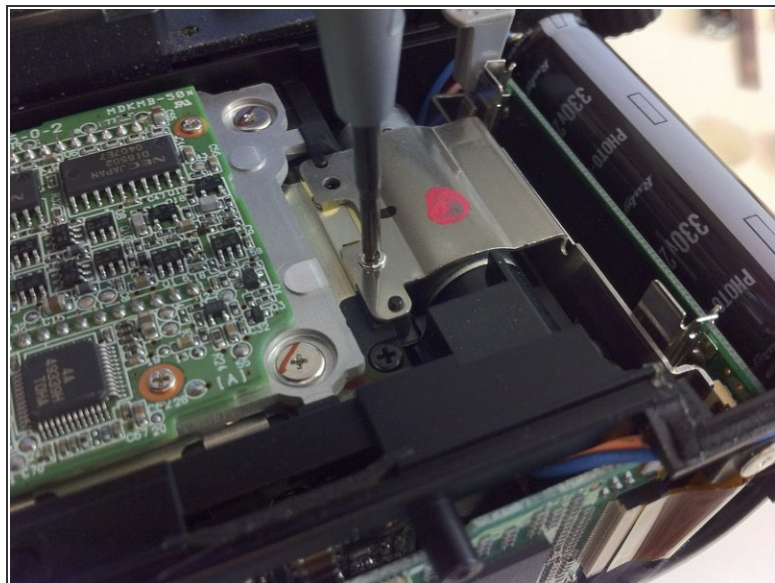
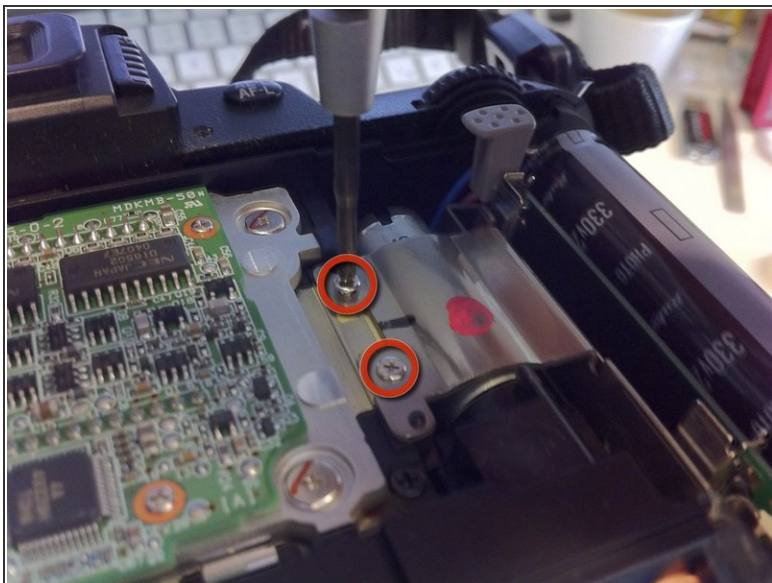
Step 5



- Pull the rear cover off the body of the D70, minding the LCD board ribbon cable that may get caught.

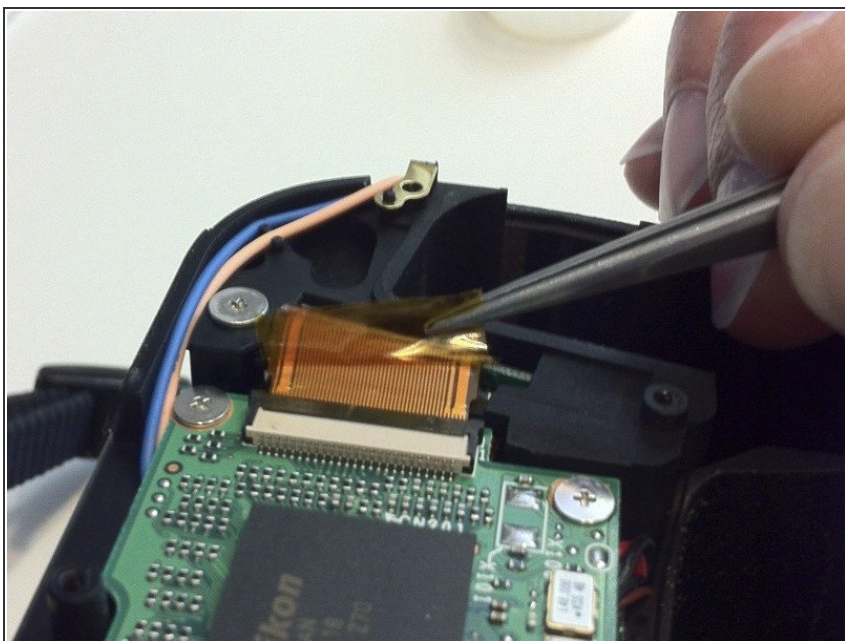
⚠ At this point, the capacitor is visible and its exposed contacts are boxed in red in the second picture. Even though they are recessed, be careful not to touch the contacts to avoid shocking yourself.

Step 6 — D70 CF card slot replacement



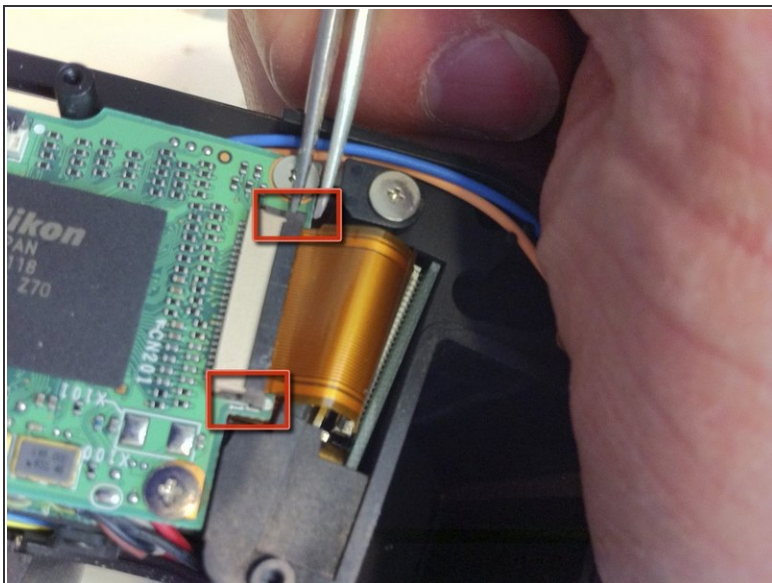
- Remove the two Phillips screws securing the holder of the CF Card Slot.

Step 7



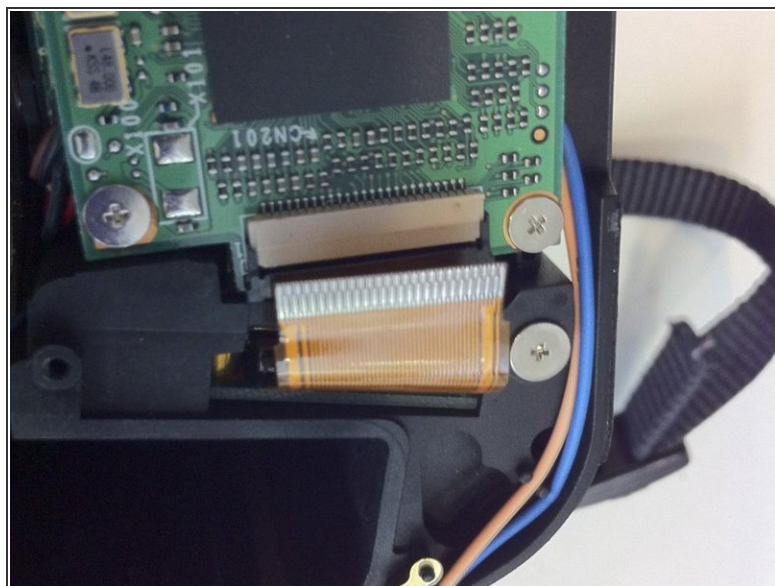
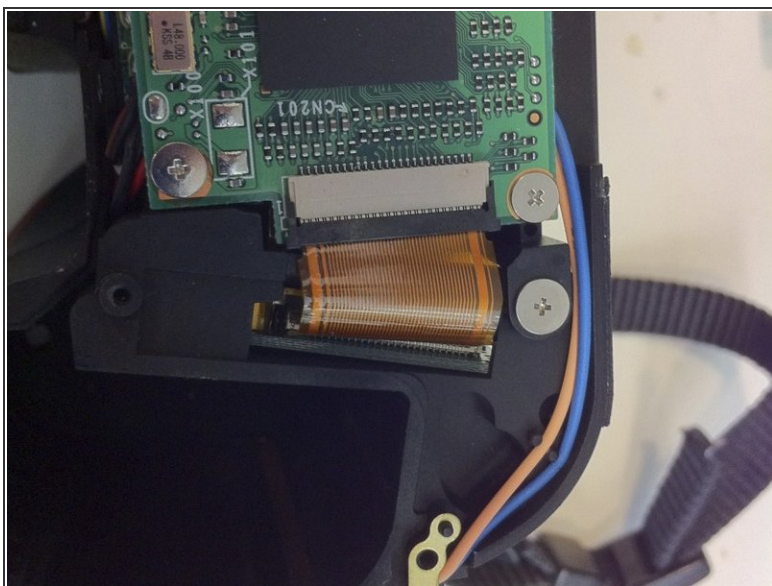
- Peel of the Foil securing the Flexcable.

Step 8



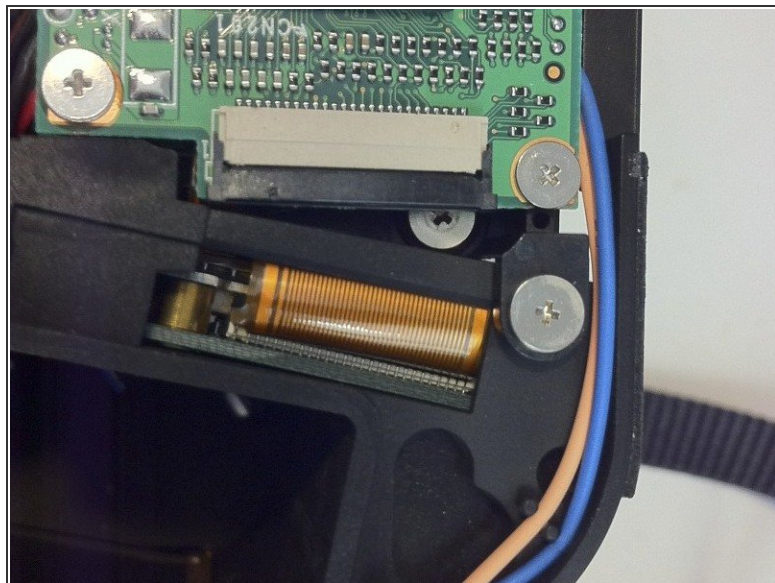
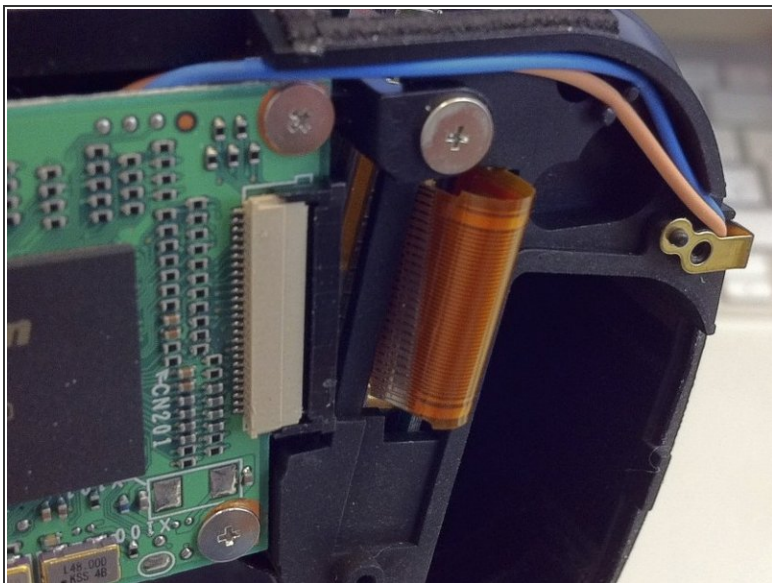
- Use Tweezers to open the locking on the ribbon cable socket.

Step 9



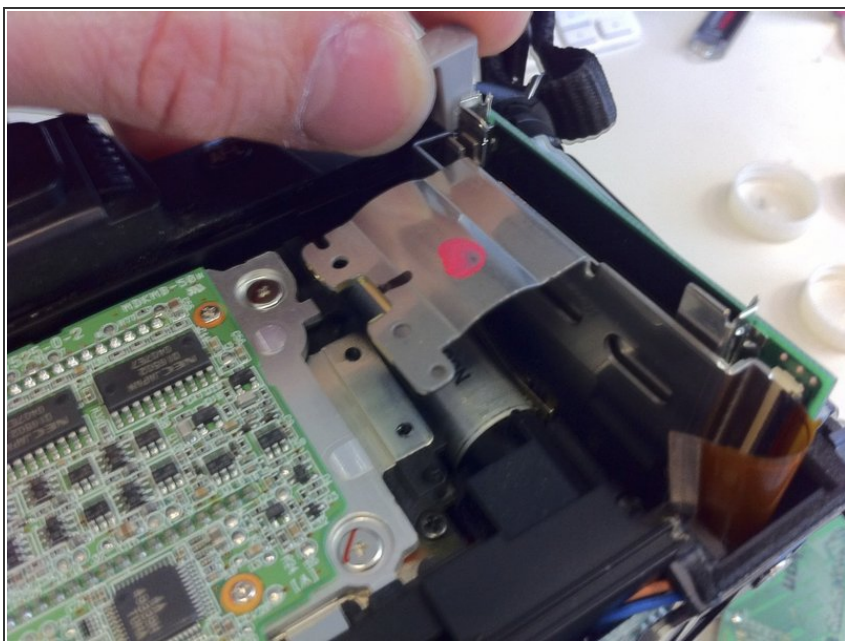
- Pull the ribbon cable out of its socket.

Step 10



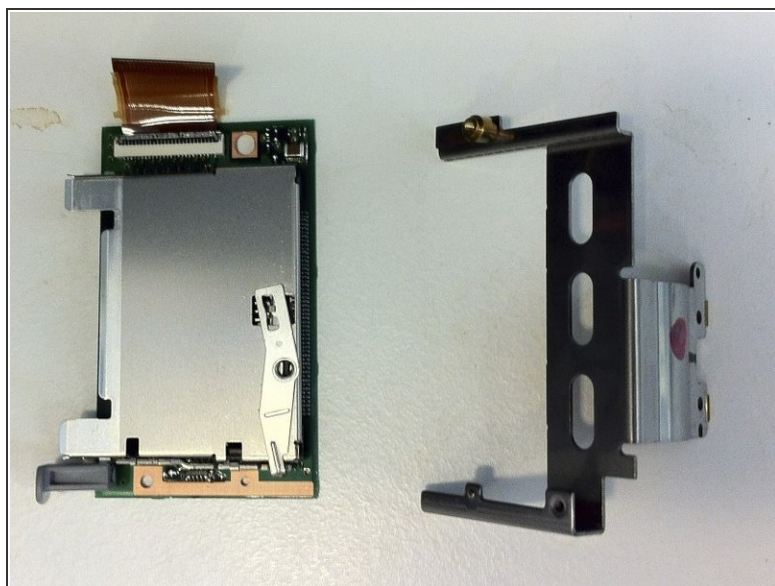
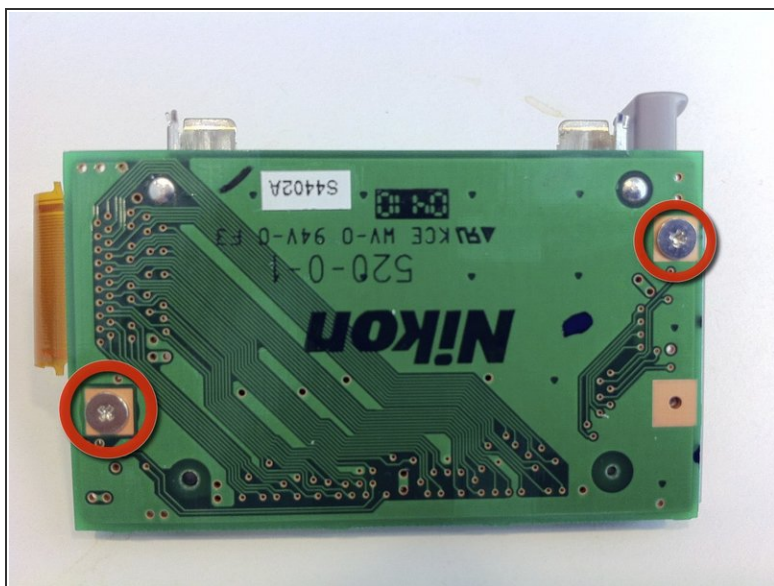
- Carefully fold the Pull the ribbon cable towards the CF Slot

Step 11



- Pull the Slot out of the body.

Step 12



- Remove the two Phillips screws to separate the Holder from the Slot.

To reassemble your device, follow these instructions in reverse order.