



# Simplex TrueAlert Disassembly

How to take apart a Simplex TrueAlert alarm.

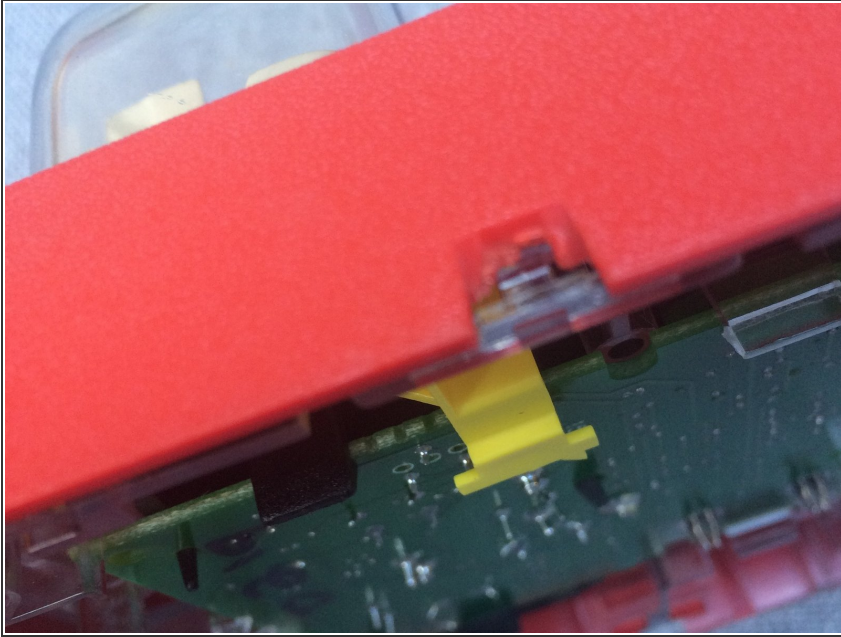
Written By: Alex



# INTRODUCTION

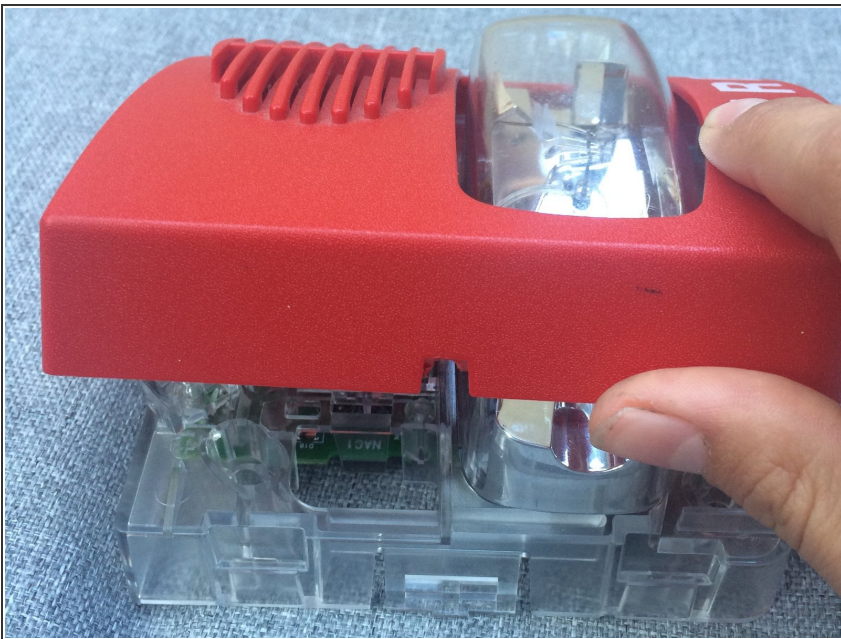
How to take apart a Simplex TrueAlert alarm.

## Step 1 — Remove cover clips



- Insert wisdom here.

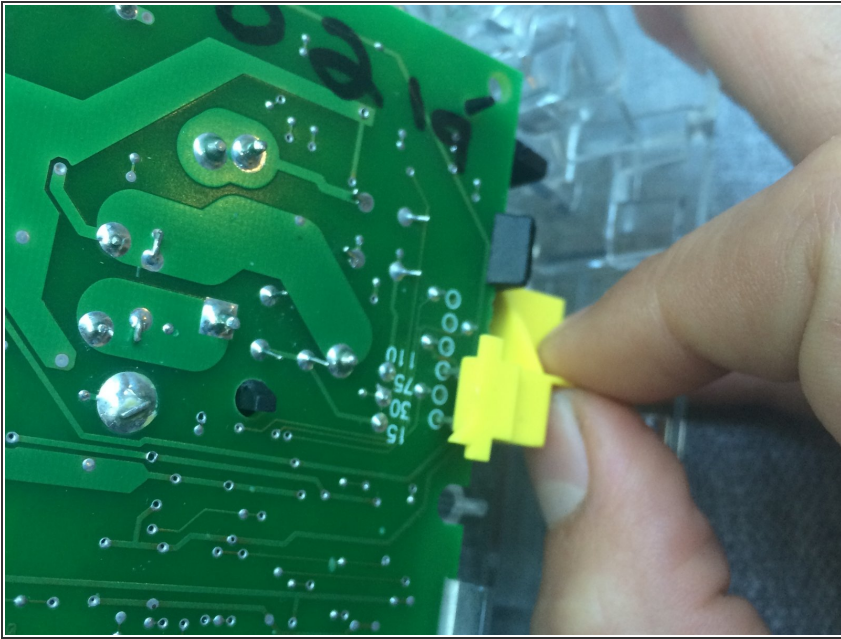
## Step 2 — Remove cover



- Insert wisdom here.

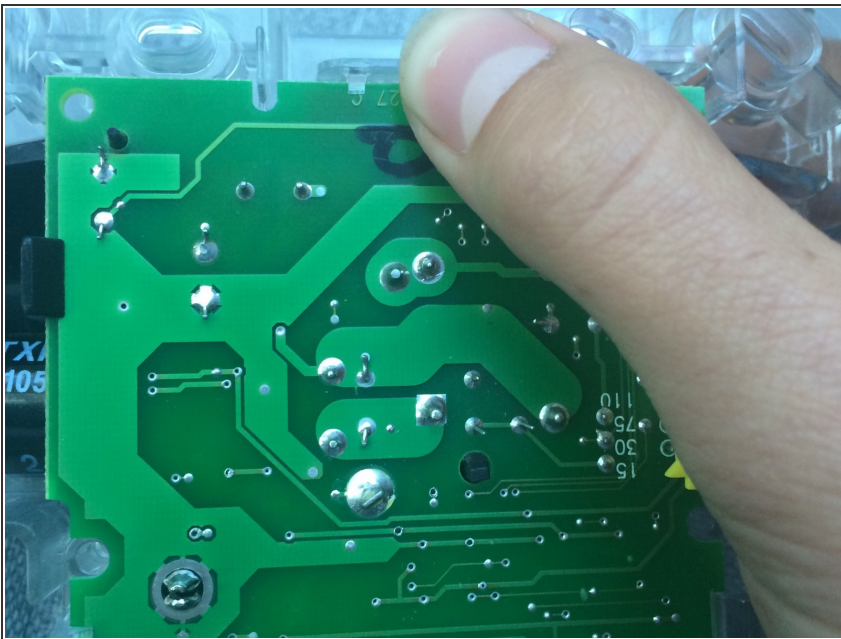


### Step 3 — Remove brightness switch



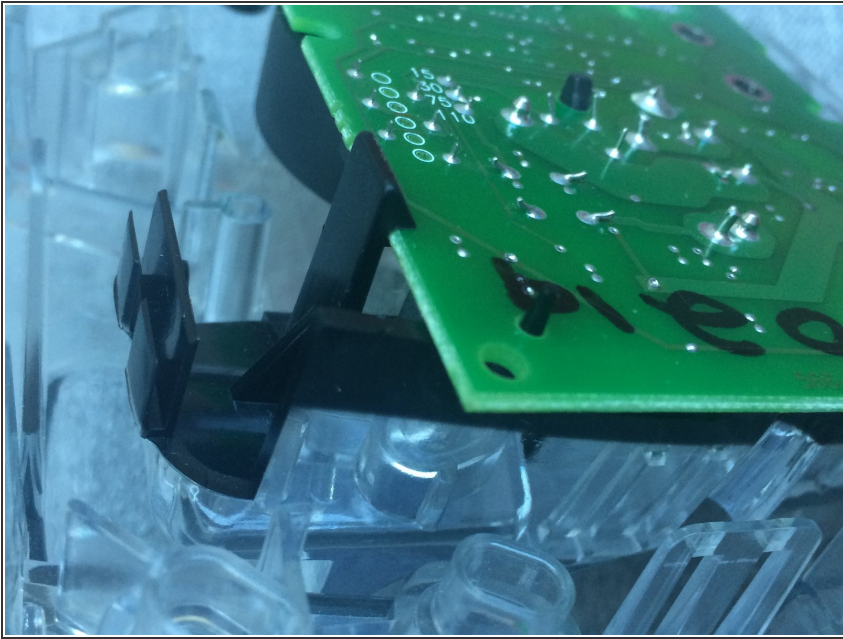
- Insert wisdom here.

### Step 4 — Remove circuit board clips



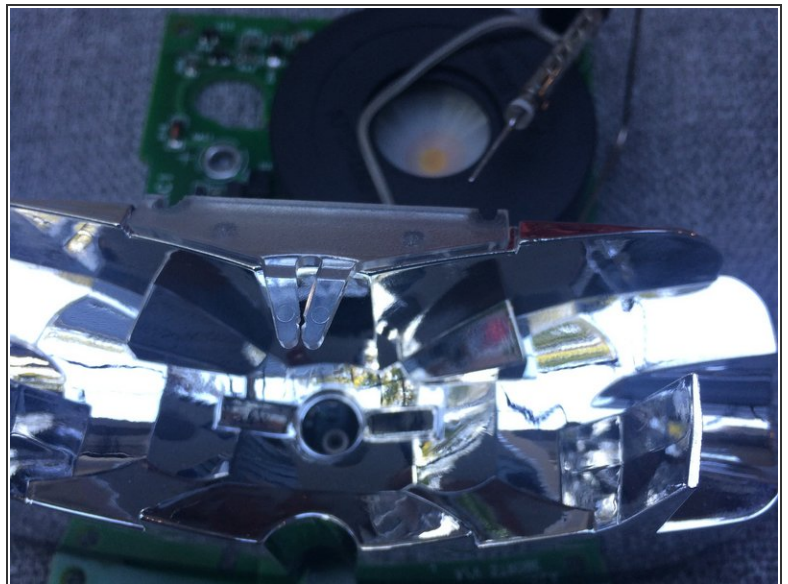
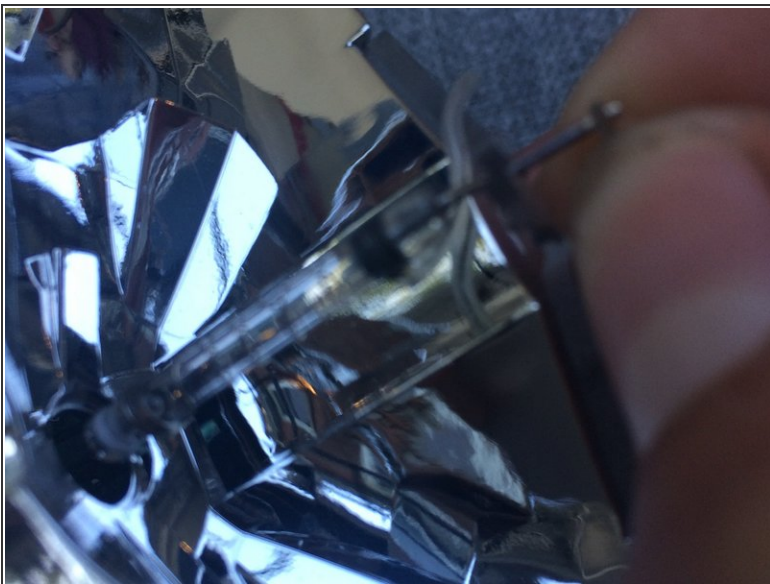
- Insert wisdom here.

## Step 5 — Lift circuit board



- Insert wisdom here.

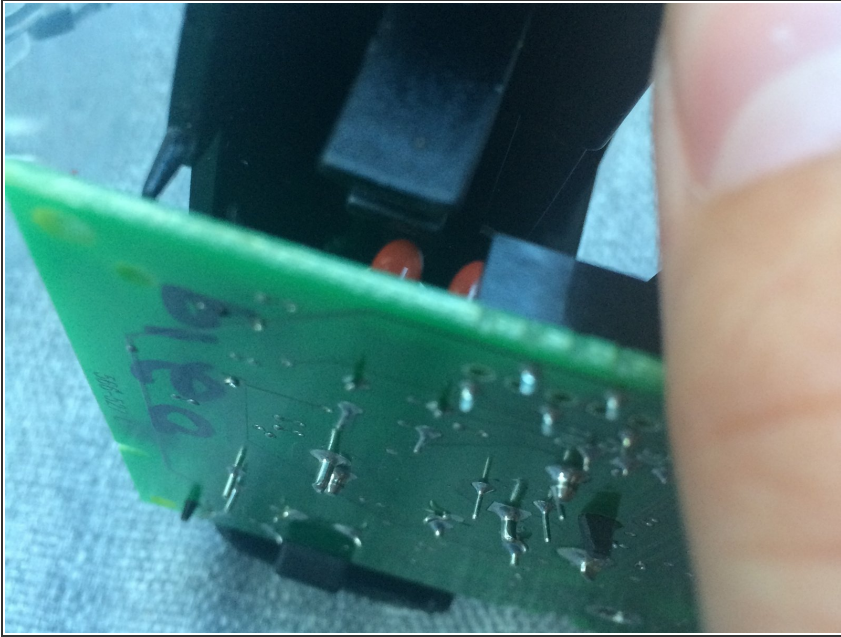
## Step 6 — Remove strobe tube



- Don't break the strobe tube

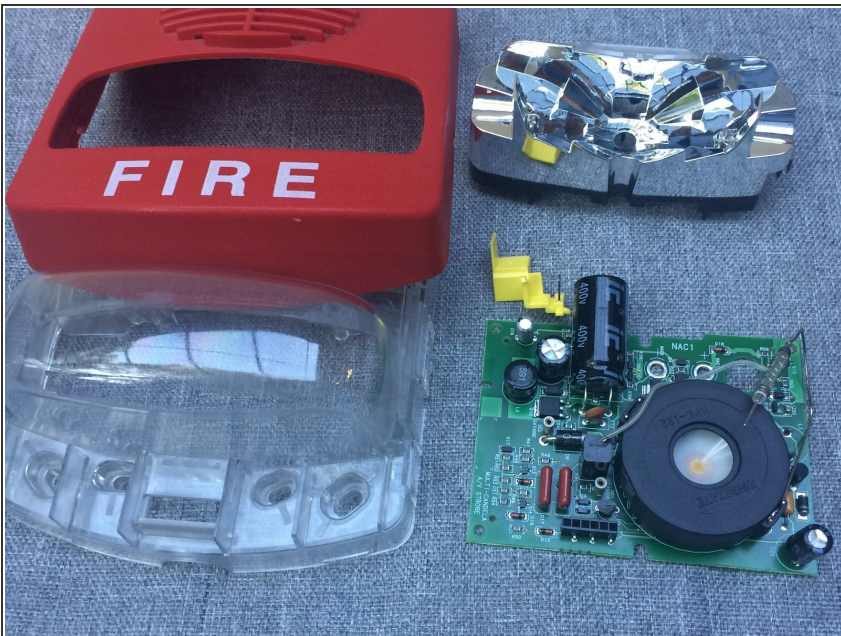


## Step 7 — Remove plastic cover



- Insert wisdom here.

## Step 8 — Done!



- Insert wisdom here.

To reassemble your device, follow these instructions in reverse order.