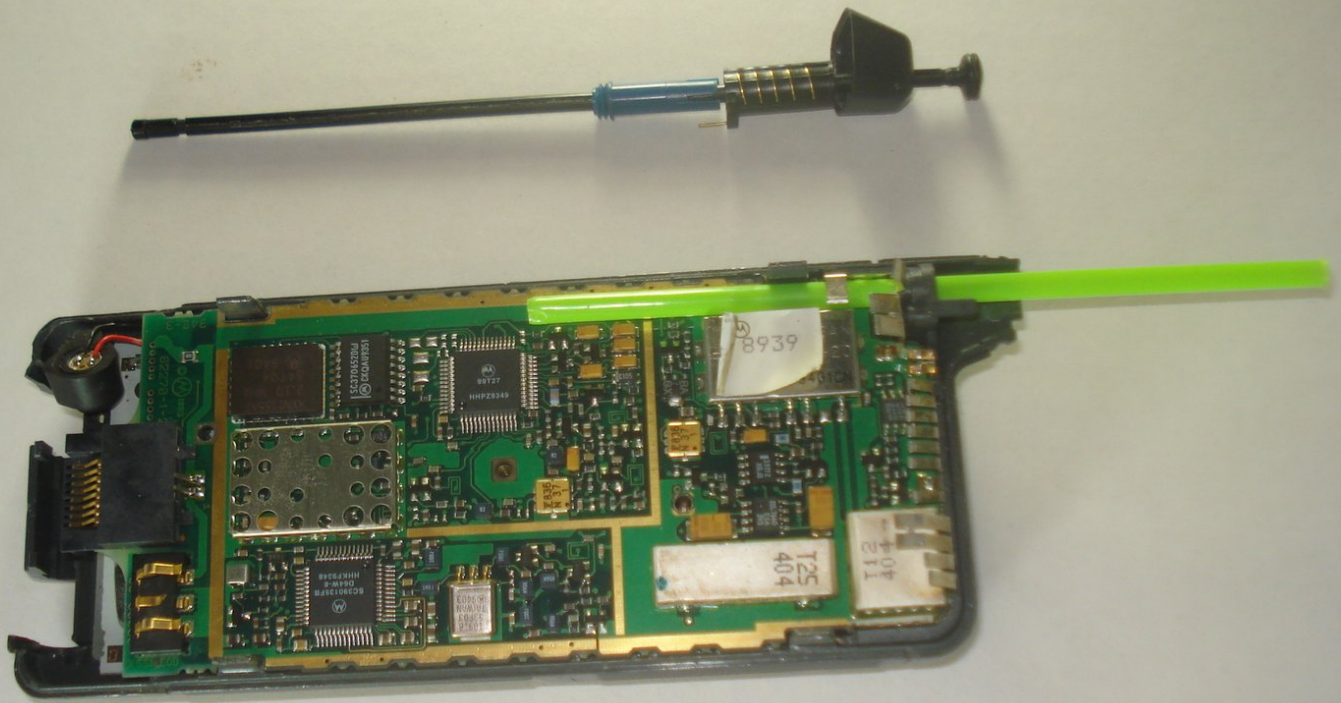




# Motorola California Mobile Phone Antenna Replacement

This guide will walk you through the replacement of the California Mobile Phone's pull-out antenna.

Written By: Andrew Lam



---

## INTRODUCTION

Use this guide to replace the pull-out antenna through the back of the device.

---



### TOOLS:

- [Phillips #00 Screwdriver](#) (1)
  - [Flathead Screwdriver](#) (1)
-

## Step 1 — Antenna



- Remove the battery by sliding it down the rails to which it is connected.

## Step 2



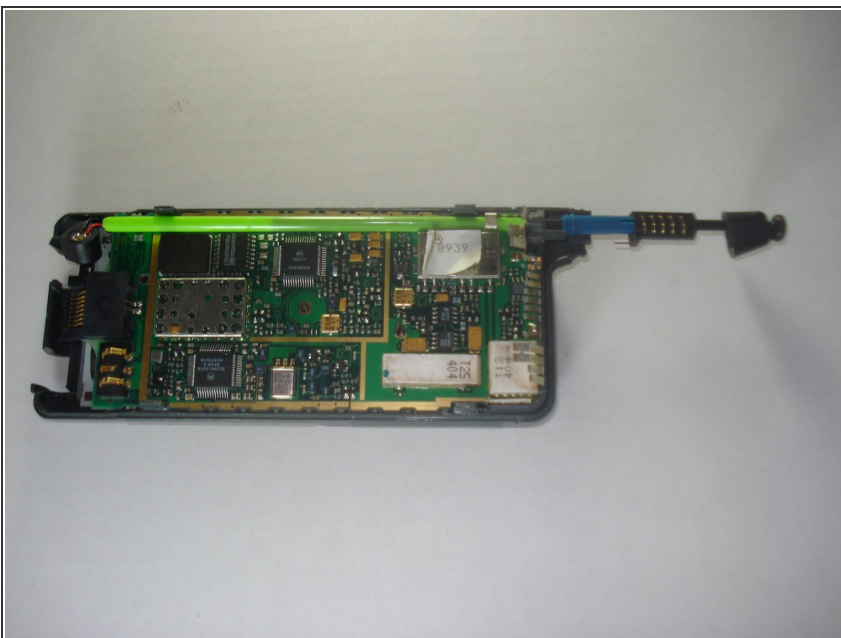
- Insert the Phillips 00 screwdriver into the holes that connect the key pad guard to the rear casing in the plastic rod.
- ⓘ The following step may require a substantial amount of force.
- Use the screwdriver to push the rods towards each other until they click out of their locked positions.

## Step 3



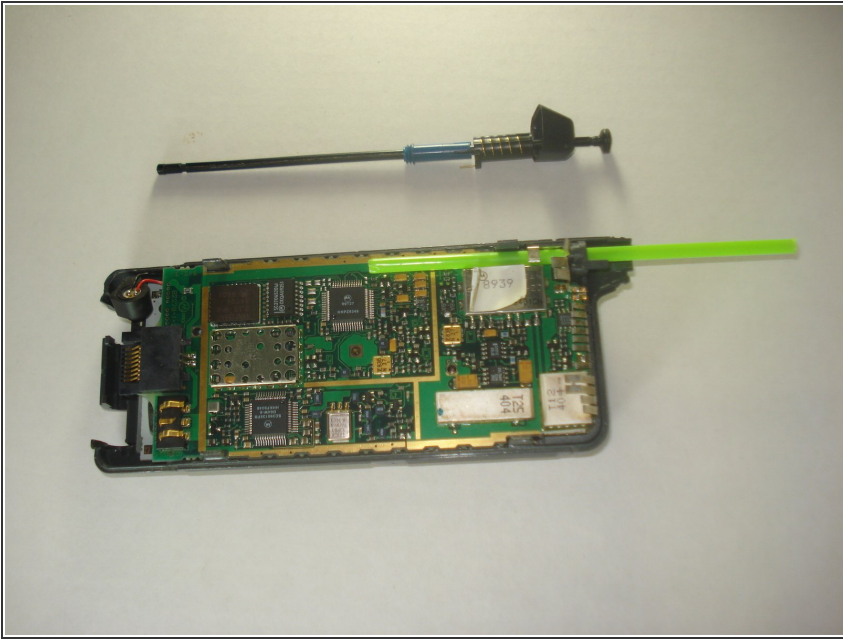
- Slide off the antenna guard and locate the four clips on the exterior of the rear casing.
- Push the clips outward while simultaneously lifting the rear casing and keyguard away from the front casing.

## Step 4



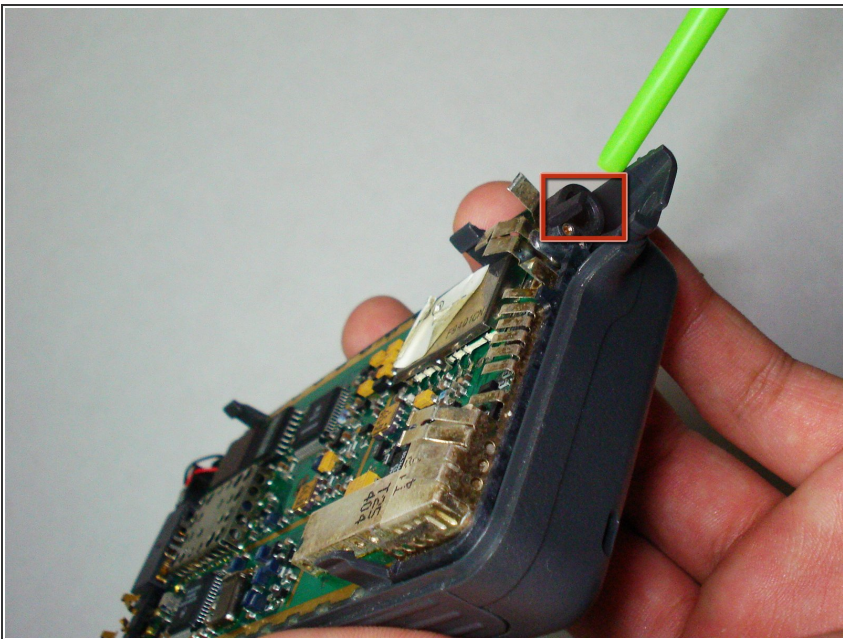
- Locate and unplug the black component of the current antenna from the motherboard.
- ⓘ Under the black component there should be a blue component.
- Unscrew the blue component in order to free the antenna.

## Step 5



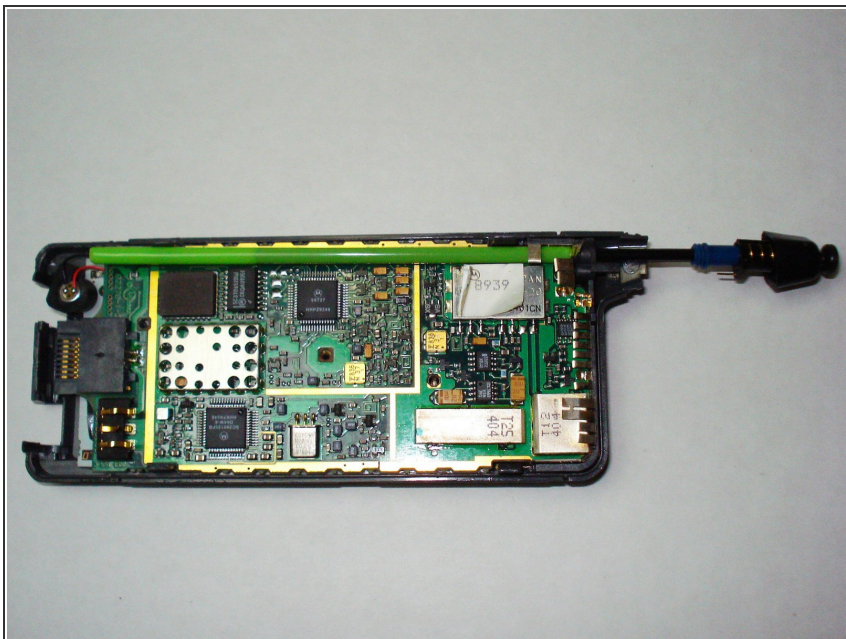
- Slide the antenna out of the green tubing.
- Slide the green tubing out of its hole.

## Step 6



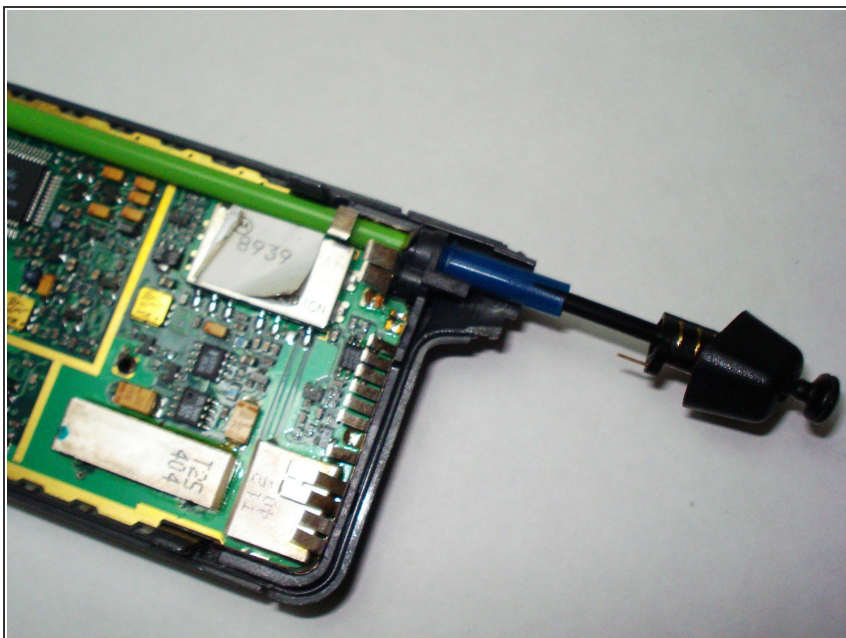
- Insert the new green tubing into the corresponding slot.

## Step 7



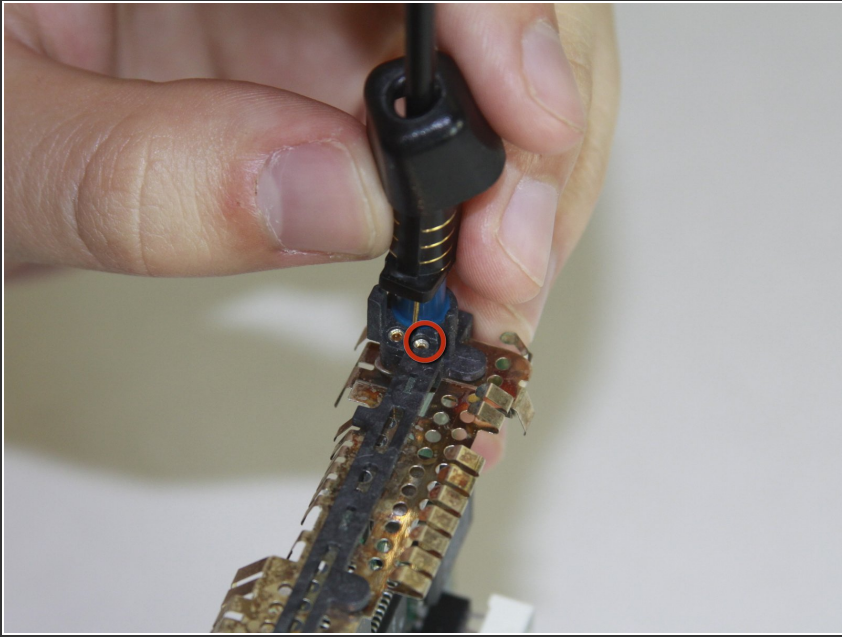
- Insert the new antenna into the green tubing.

## Step 8



- Screw the blue piece of the antenna into the threaded hole on the motherboard until it is tight.

## Step 9



- Align the protruding wire on the black component with the corresponding hole on the motherboard.
- Push the wire into the hole.

## Step 10



- Reverse the instructions from Step 2 to re-install the keypad guard and rear casing onto the device.

## Step 11



- Push down on the antenna guard until it clicks into place.

To reassemble your device, follow these instructions in reverse order.