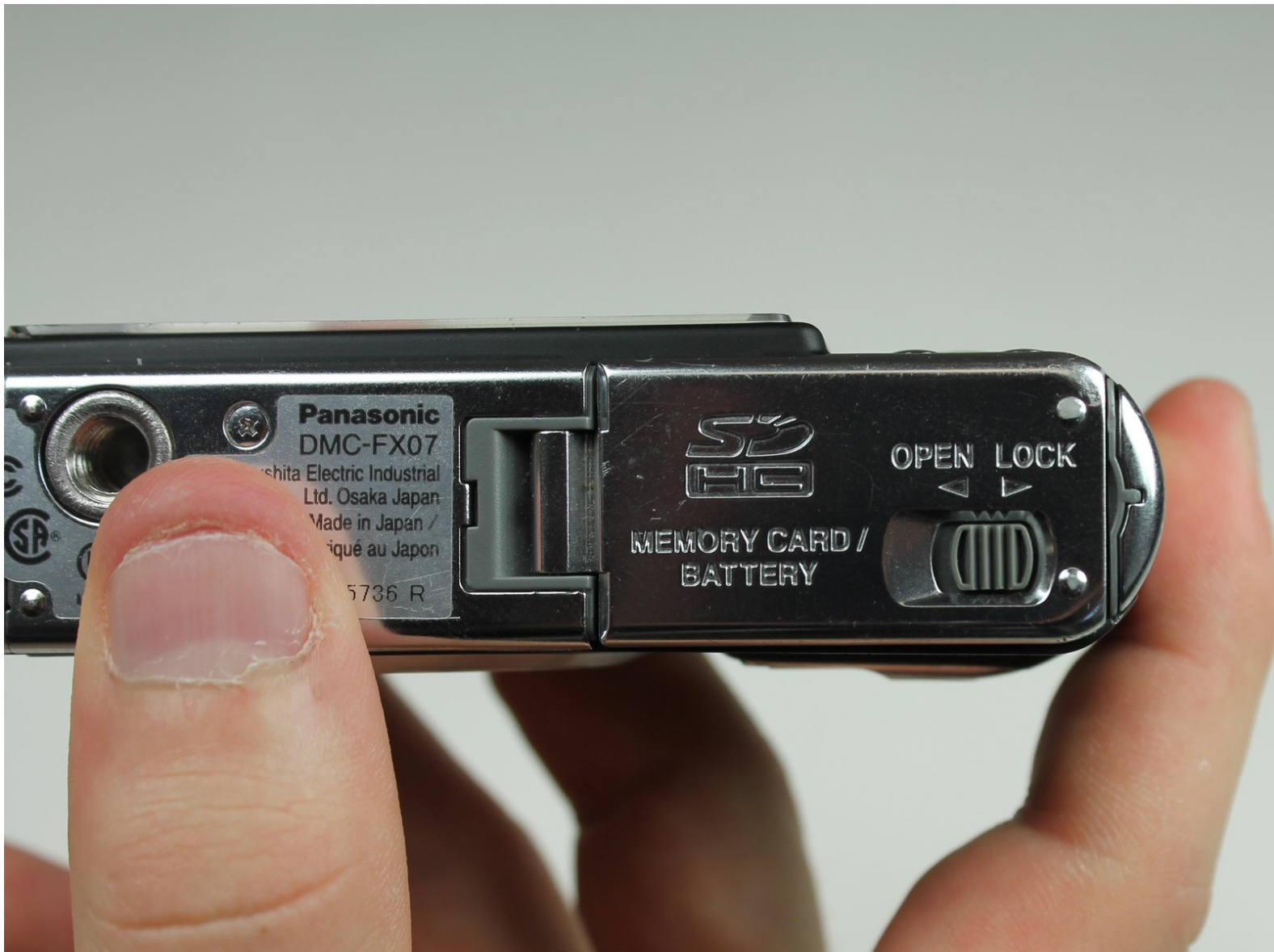




Panasonic Lumix DMC-FX07 Battery Replacement

Replace your dead battery to bring life to your camera.

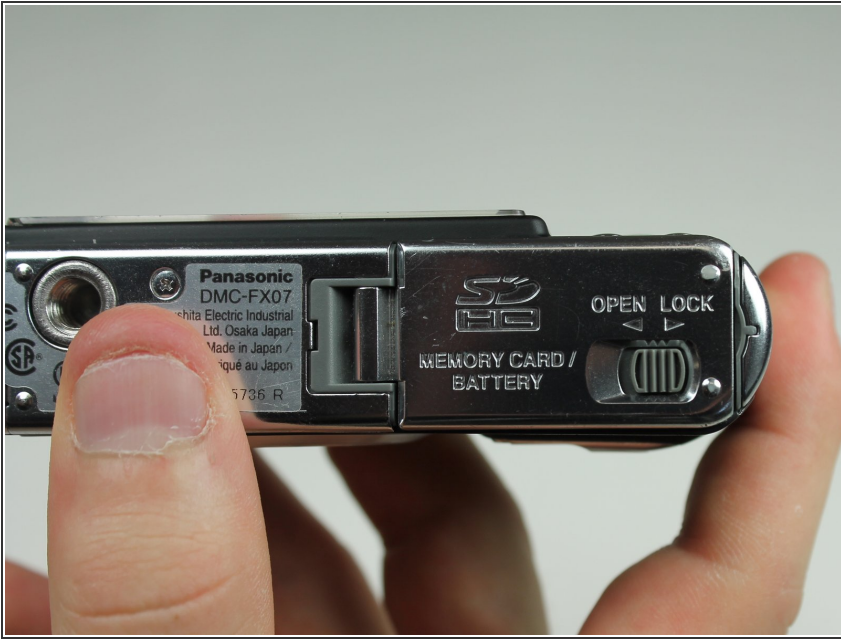
Written By: Jose Cordero



INTRODUCTION

The guide will take you through the steps of how to remove the battery.

Step 1 — Battery



- Move the switch on the battery door to the Open position.
- ⓘ The door will automatically swing open after you let it go.

Step 2



- Push the small gray tab on the top right corner to the left. The battery will pop out slightly.
- Keep your finger clear of the battery when it pops out.

To reassemble your device, follow these instructions in reverse order.