



# Casio Exilim EX Z55 Lens Replacement

How to detach the lens from the camera.

Written By: Greg Bucher



---

## INTRODUCTION

This guide will show you how to detach the lens assembly from the camera. You may have to repair or replace a cracked lens or one that won't retract.

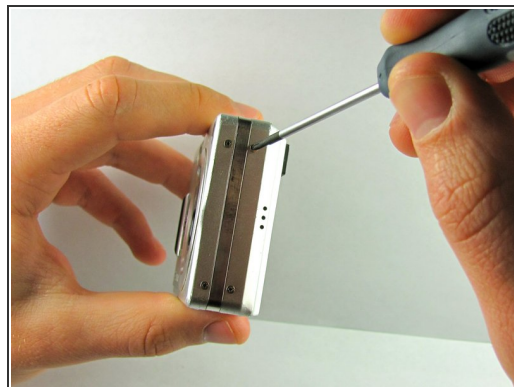
---



### TOOLS:

- [iFixit Opening Tool](#) (1)
  - [Phillips #00 Screwdriver](#) (1)
-

## Step 1 — Front Case



- Remove eight 1.8 mm screws from the left and right sides of the camera using a Phillips #00 screwdriver

## Step 2



- Remove the four 3.7 mm screws from the bottom of the camera using a Phillips #00 screwdriver.



### Step 3



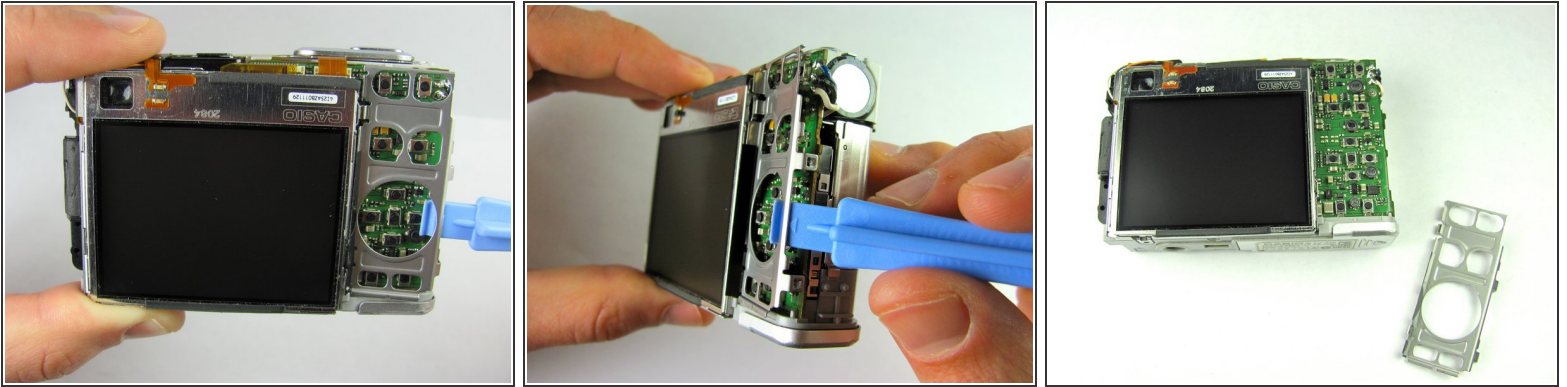
- Separate the front case from the body of the camera.

### Step 4 — Back Case



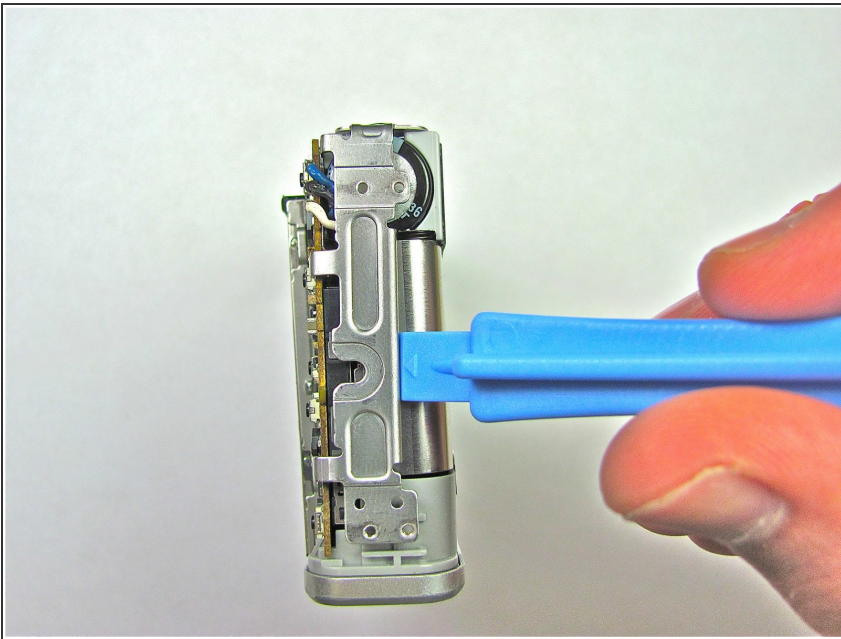
- Separate the back case from the body of the camera.

## Step 5 — LCD Screen



- Remove the metal grating located to the right of the LCD screen by inserting the plastic opening tool under the grating and pulling up.

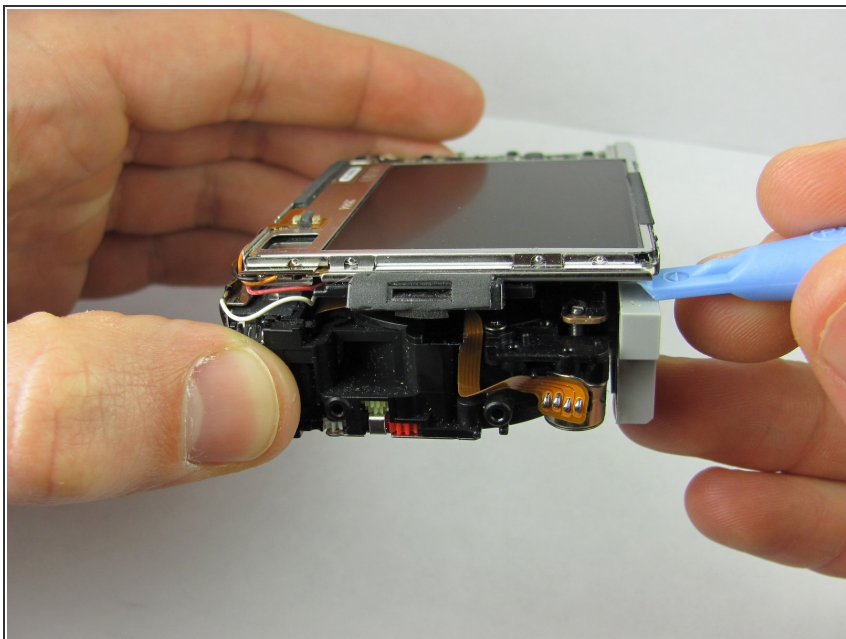
## Step 6



- Before removing the side metal bracket, first remove the attached strap knob by twisting it off.
- Then, remove the side metal bracket by inserting the plastic opening tool under the bracket and pulling up.

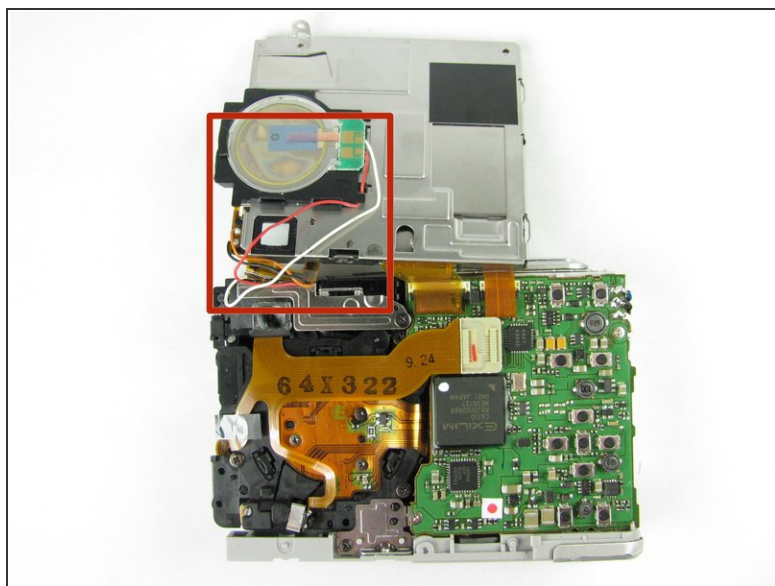


## Step 7



- Using the plastic opening tool, pry up the LCD screen starting at one of the corners. Insert the tool under one of the corners and lift up.

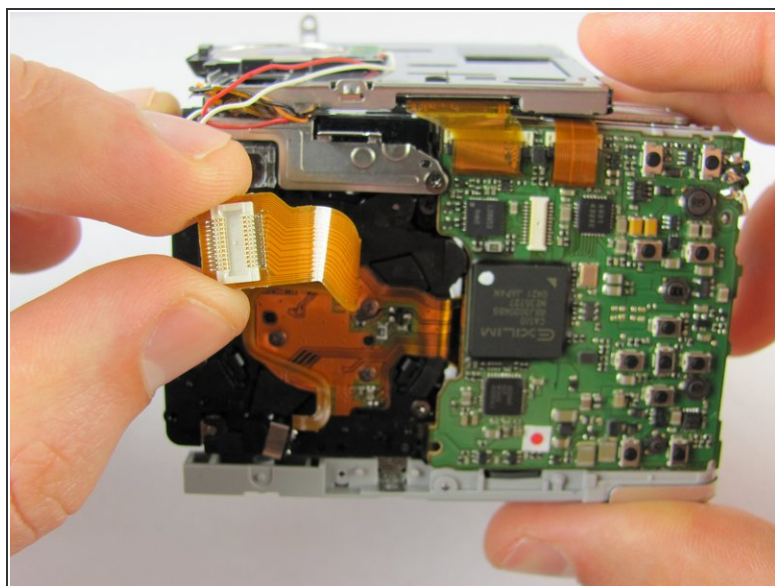
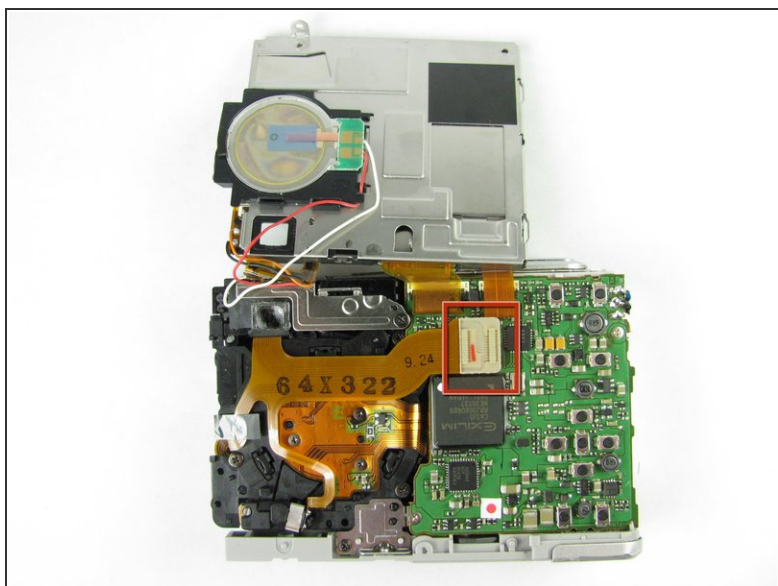
## Step 8



- Continue to lift the LCD screen all the way up.

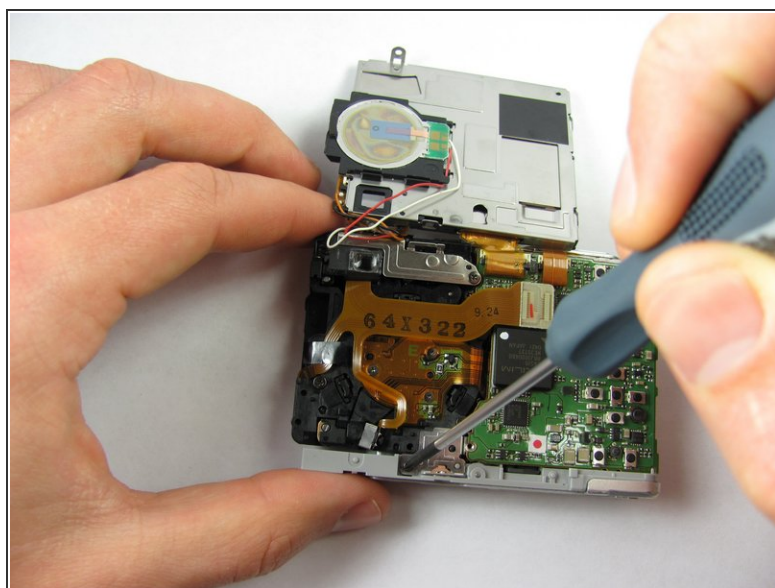
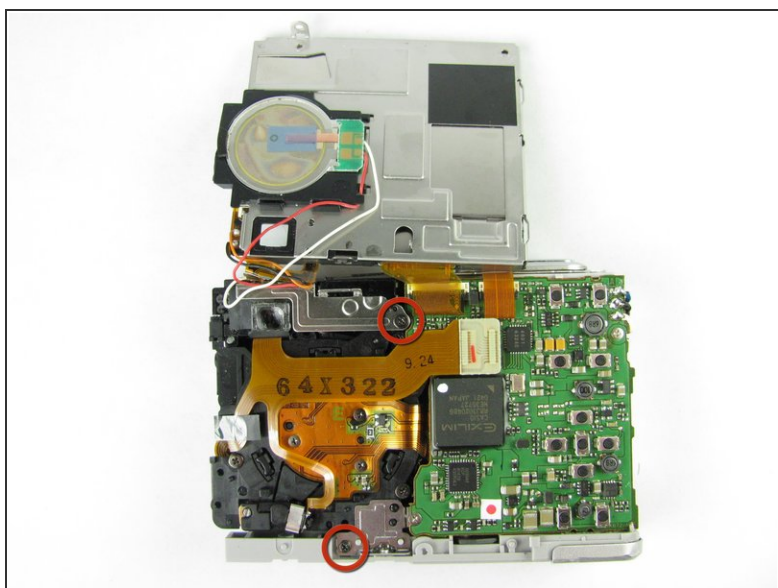
**⚠ Be careful not to rip any wires connecting the LCD screen to the top of the camera.**

## Step 9 — Lens



- Remove the orange ribbon cable by grabbing the white tab and pulling back.

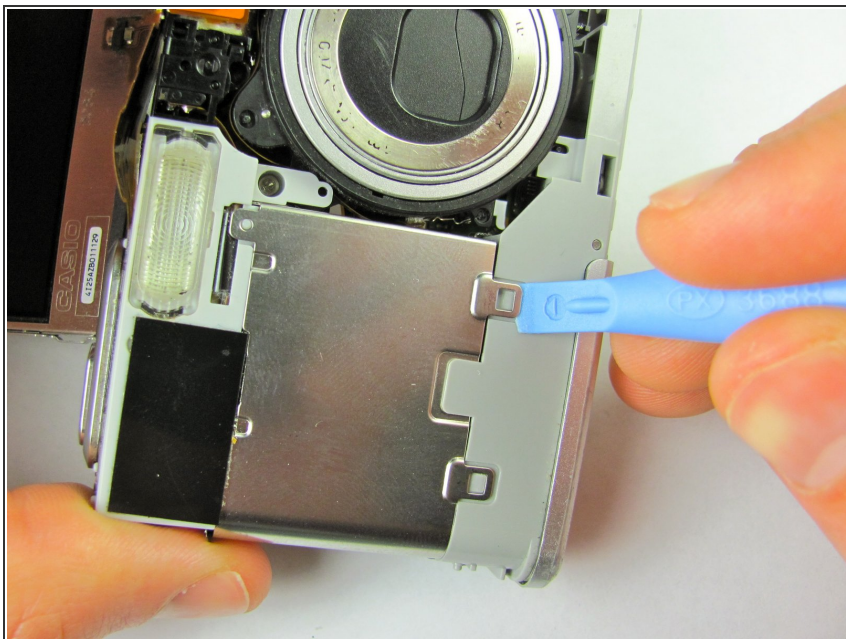
## Step 10



- Remove the two 1.66mm screws on both the bottom and top metal plates, using a #00 Phillips screwdriver.

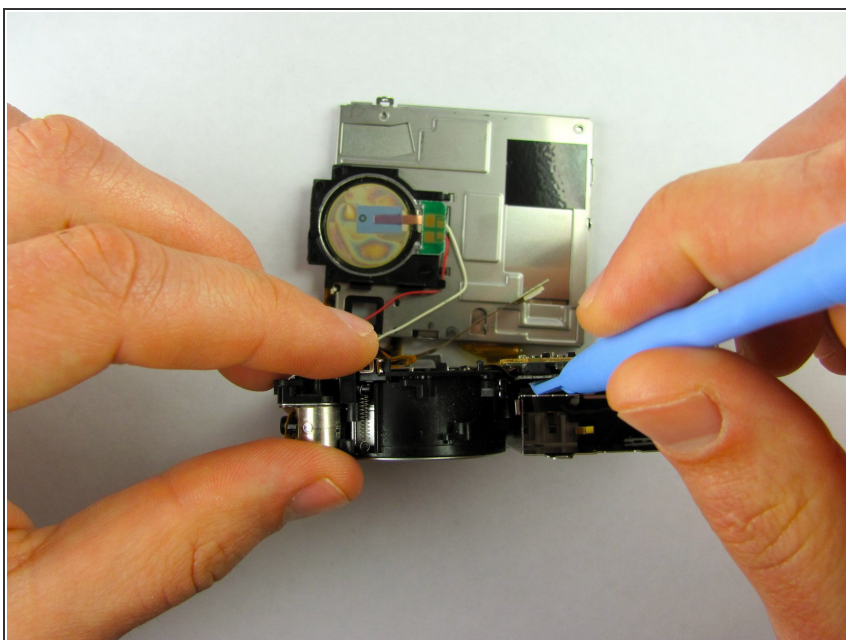


## Step 11



- Using the plastic opening tool, pry the battery case clamps (located on front of the camera) so that the bottom portion of the camera will come loose.

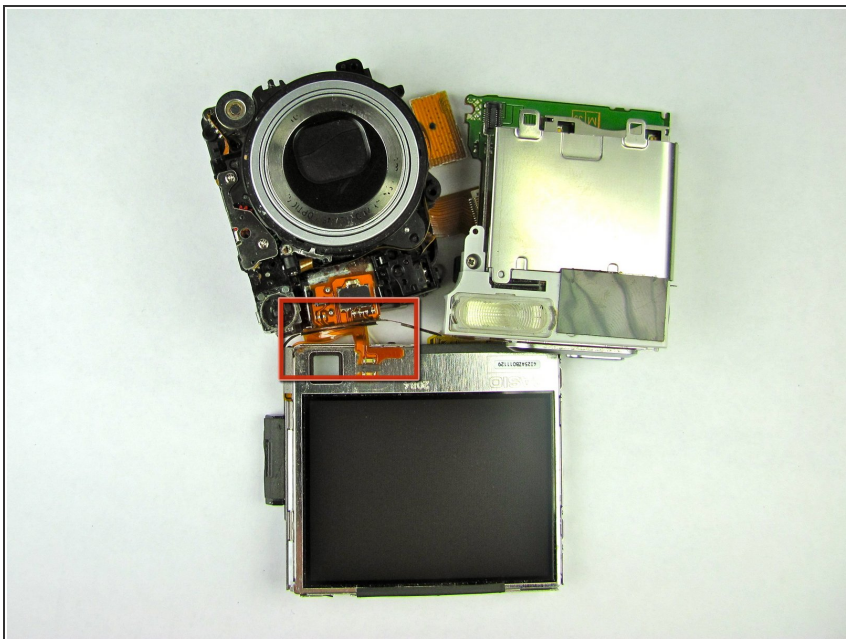
## Step 12



- Once the bottom portion of the camera is removed, stand the camera upright, bottom portion facing up, then detach the inner orange strip from the motherboard to the lens by inserting the plastic opening tool under the tab and lifting up.



## Step 13



- Fully remove the lens from the motherboard.
- ⓘ It will still be attached by wires and a different orange ribbon cable.
- You can now proceed to repair the existing lens or replace it with a new lens.

To reassemble your device, follow these instructions in reverse order.