



Asus VivoBook Q200E-BSI3T08 Webcam Replacement

This guide will show you how to locate and remove your webcam if you are experiencing issues with your webcam.

Written By: Mitchell Jackson



INTRODUCTION

This guide will show you how to locate and remove your webcam if you are experiencing issues with your webcam.



TOOLS:

- [iFixit Opening Tools](#) (1)
- [Metal Spudger](#) (1)
- [Phillips #0 Screwdriver](#) (1)



PARTS:

- [ASUS VivoBook Q200E Front Camera](#) (1)

Step 1 — Display



- First open the laptop and place it so that you have access to the side of the display.
- Next you want to place the laptop in a position where you have easy access to the display.
- Use a metal or a plastic prying tool to split the front and back of the display.
- Start on the side and work your way around.

Step 2



- Pull the clear plastic display down from the bottom right and left.

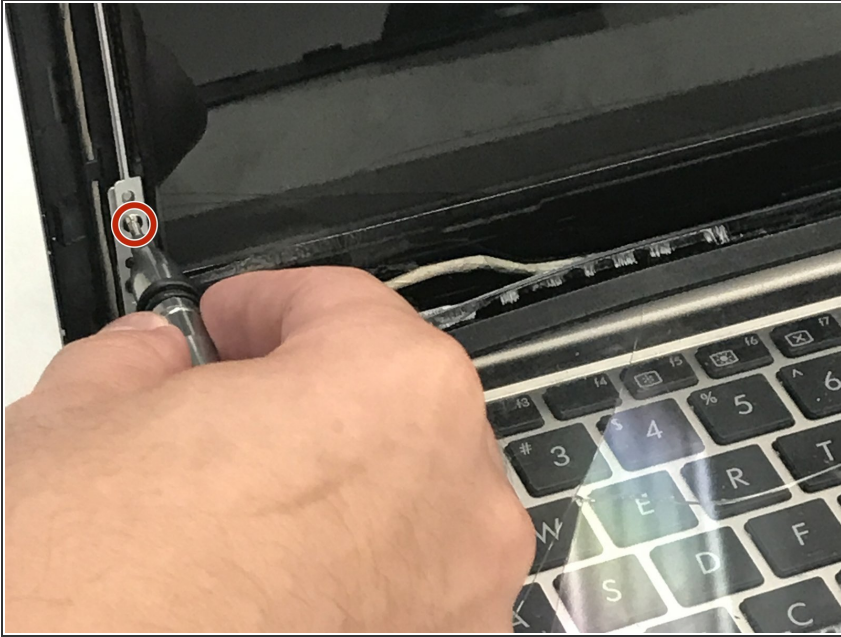
i If pulled from the top you might crack the actual plastic.

Step 3



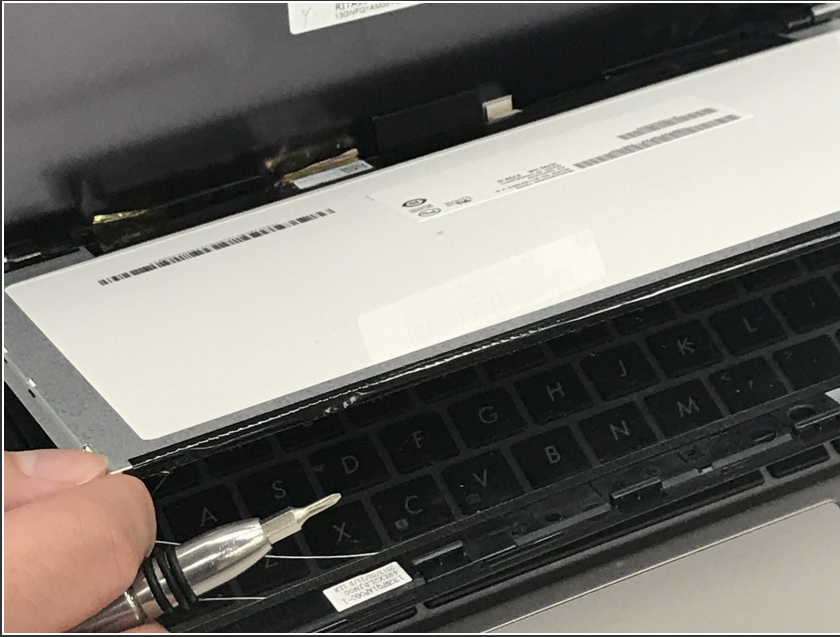
- Remove the two 2.8mm screws on the top right and top left of the screen using a Phillips #0 screwdriver.

Step 4



- Remove the two 2.8 screws on the bottom right and left using a Phillips #0 screwdriver.

Step 5



- Once the screws are removed you should be able to move the display down. Be careful as there is a connection to the motherboard which will need to be removed.

Step 6



- Here is a picture of the connection that needs to be removed to free the display.
- Pull connection from the plastic on the sides not the wires as these are fragile.

Step 7



- Once this connection is removed here's what that should look.

Step 8



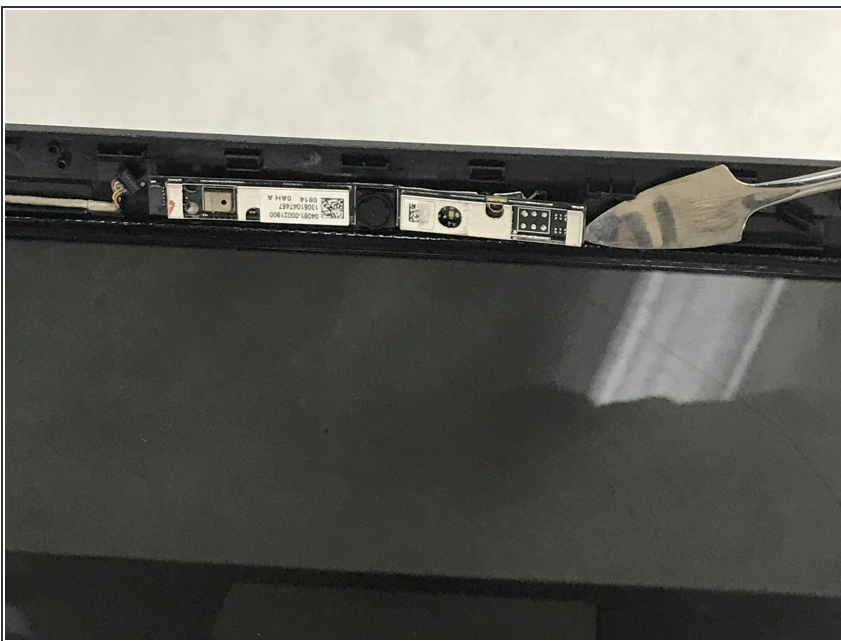
- Remove display and place your new one in it's place.

Step 9 — Webcam



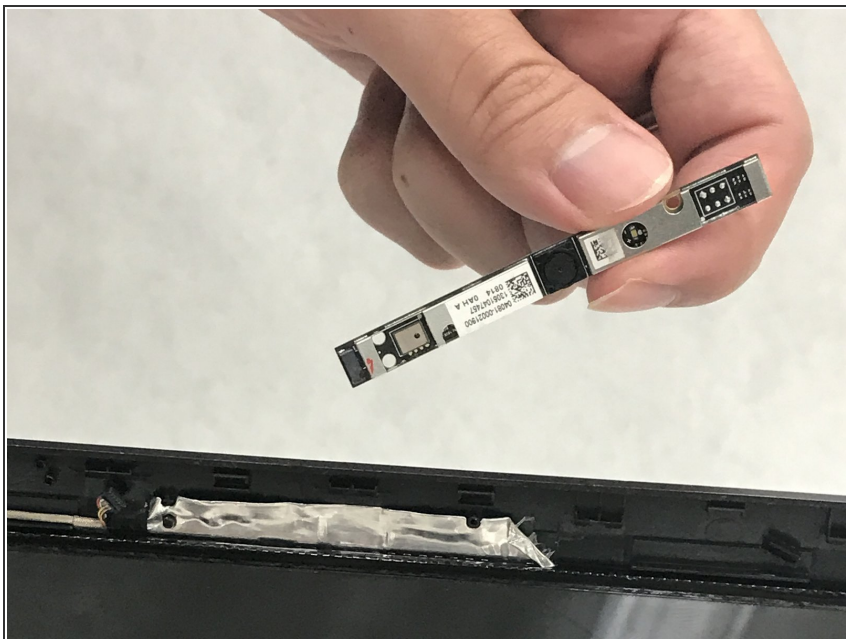
- Locate the webcam above and behind the display panel.

Step 10



- Disconnect the webcam from the display panel, using a nylon spudger.
- ⚠ Using a metal spudger around sensitive components has the potential to damage them. Be sure to use a nylon spudger or plastic opening tool before using a metal spudger.

Step 11



- Remove the webcam from the display panel.

To reassemble your device, follow these instructions in reverse order.