



# Panasonic Lumix DMC-FX07 Back Panel Buttons Replacement

Replace your back panel buttons so you can actually use the LCD display.

Written By: Karissa



---

## INTRODUCTION

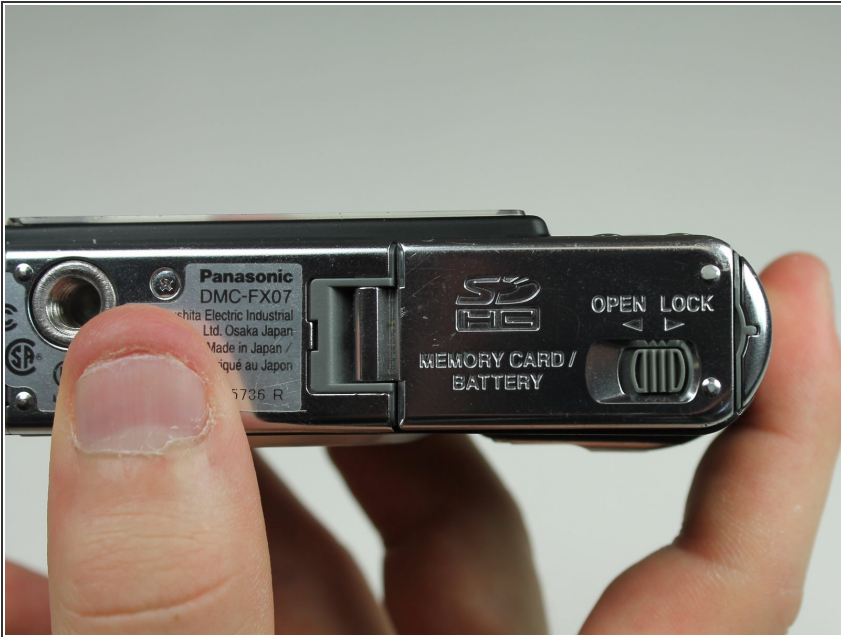
This guide will help you remove the back panel buttons so you can install new ones.

---

### TOOLS:

- [Phillips #00 Screwdriver](#) (1)
  - [Spudger](#) (1)
-

## Step 1 — Battery



- Move the switch on the battery door to the Open position.
- ⓘ The door will automatically swing open after you let it go.

## Step 2



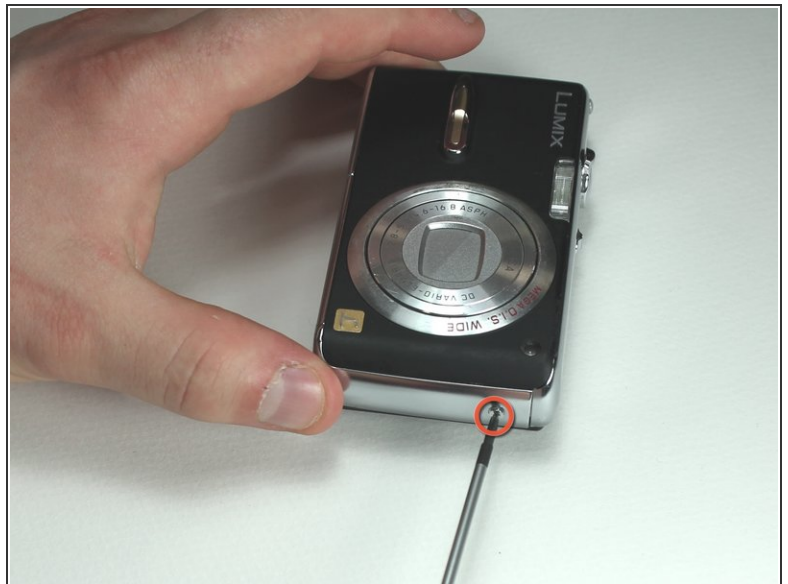
- Push the small gray tab on the top right corner to the left. The battery will pop out slightly.
- Keep your finger clear of the battery when it pops out.

### Step 3 — Memory Card



- Push the memory card in and let go.
- ❗ The memory card will pop out slightly.
- Pull out the memory card.

### Step 4 — Back Cover



- Unscrew the small screws on the sides of the camera.
- ❗ The screws on the left side(#00P, 4.7mm) are longer than the screw on the right side(#00P, 3.3mm).

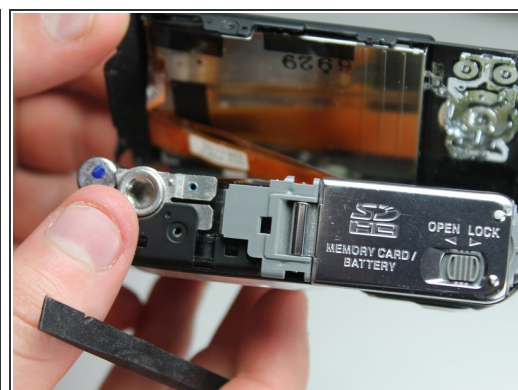
## Step 5



- Unscrew the three small screws on the bottom(#00P, 3.3mm).

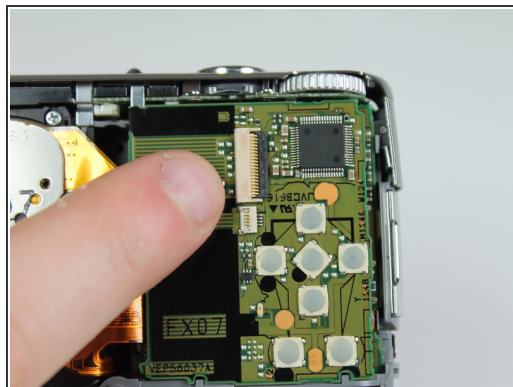
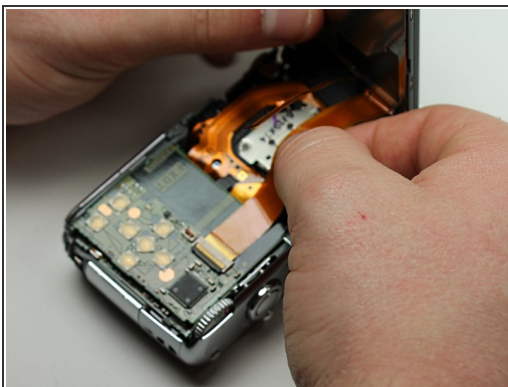
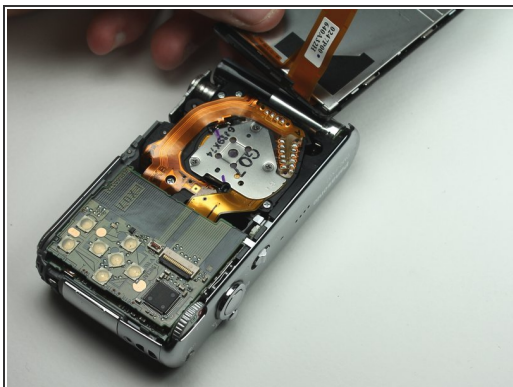
 The bottom will fall off.

## Step 6



- Lift up the bottom back cover by prying the bottom edge with the spudger.
- Gently lift up the back cover with your hand from the bottom to the top.

## Step 7



- Lift the tabs on the ZIF connectors.
- The ribbon cables should easily come out of the ZIF connectors.

## Step 8 — Back Panel Buttons



- Gently wiggle out the top motherboard.
- ⓘ The buttons are hardwired into this logic board.

To reassemble your device, follow these instructions in reverse order.