



# Altec Lansing BoomJacket Battery Replacement

This replacement guide for the Altec Lansing BoomJacket will give step by step information about how to repair the battery.

Written By: Ryan Byrnes



## INTRODUCTION

Is your Altec Lansing BoomJacket having charging issues or will not charge at all? Replacing the battery may help.



### TOOLS:

- [Phillips #0 Screwdriver](#) (1)
- [Phillips #1 Screwdriver](#) (1)
- [Metal Spudger](#) (1)
- [Tweezers](#) (1)



### PARTS:

- [Rubber casing](#) (1)
- [Screws](#) (16)
- [Metal Backing](#) (1)
- [Metal Fronting](#) (1)
- [Plugs](#) (6)

## Step 1 — Case Removal



- Using your hands, remove the pegs (4+4) from the front and back of the speaker.

## Step 2



- Remove the outer black rubber housing of the speaker.



### Step 3



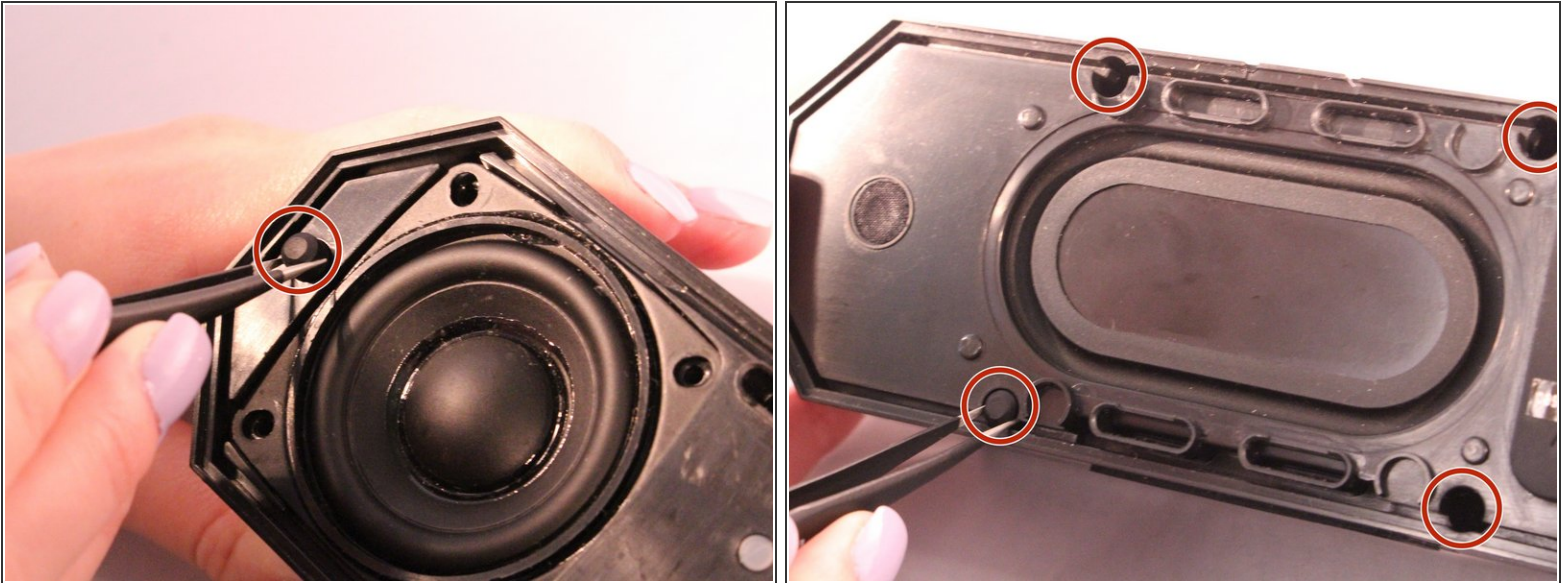
- Remove the inner blue rubber housing from the speaker.

### Step 4



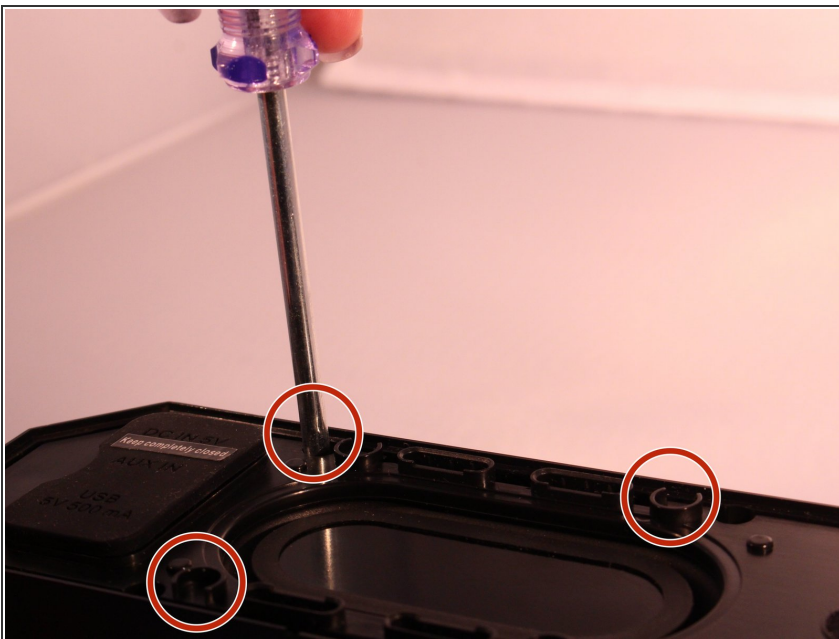
- Pull out the two black wire meshes using a metal spudger.
- ⚠ Be careful not to damage the metal casing.

## Step 5



- Using tweezers remove the rubber stoppers (4 at the back + 2 at the front).

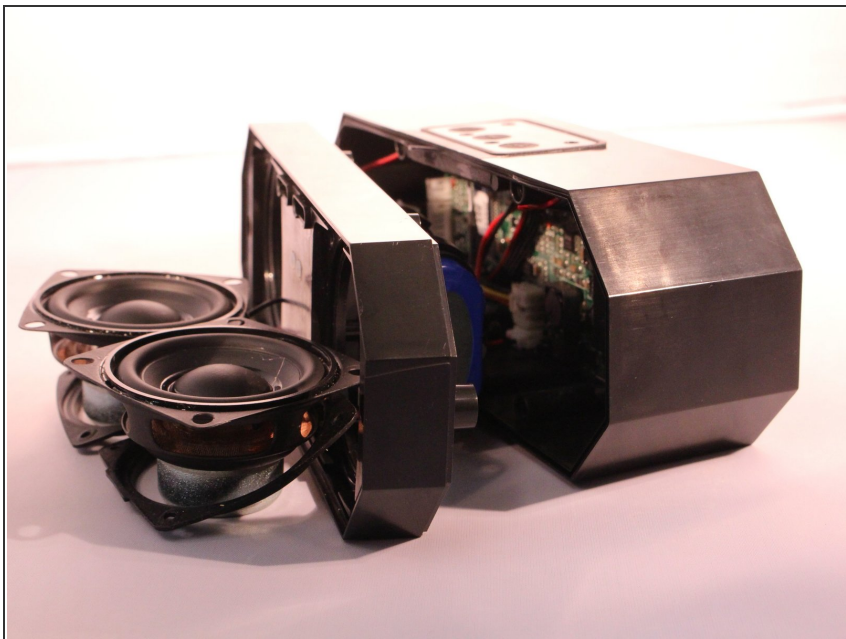
## Step 6



- Using the size PH1 screwdriver remove the screws exposed from the rubber stoppers (4 + 2).

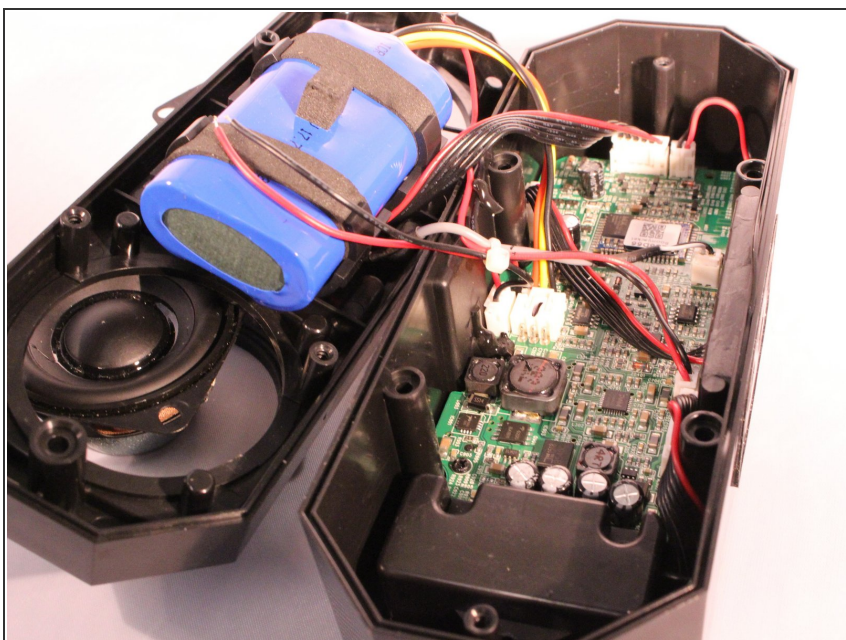


## Step 7



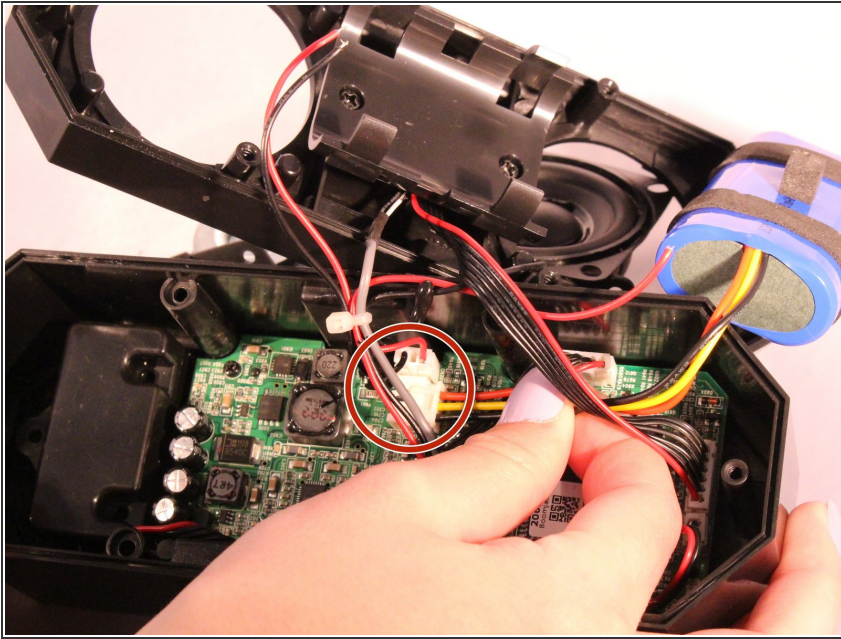
- Pull the case apart and you will be able to see all the components inside the speaker.

## Step 8 — Battery



- The battery will be sitting right behind the speakers when the case is open.

## Step 9



- Unplug and disconnect the battery from the motherboard.

To reassemble your device, follow these instructions in reverse order.