



LG V20 Front Facing Camera Replacement

Tried to take a selfie but can't focus in on...

Written By: Max Wu



INTRODUCTION

Tried to take a selfie but can't focus in on the shot? This may be because your front-facing camera is damaged and needs replacement. This guide will walk you through the steps of replacing the front-facing camera of your LG V20.

TOOLS:


[Phillips #00 Screwdriver](#) (1)

[iFixit Opening Tool](#) (1)

[Tweezers](#) (1)

Step 1 — Battery



 Before disassembling your phone, discharge the battery below 25%. A charged lithium-ion battery can catch fire and/or explode if accidentally punctured.

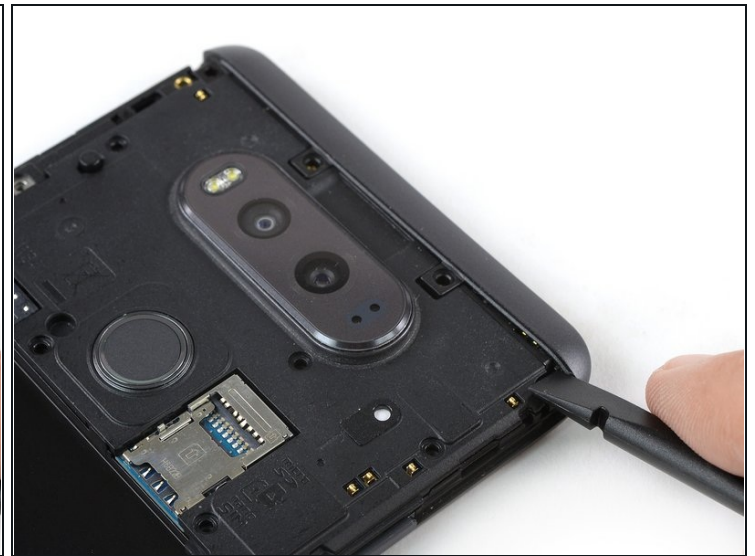
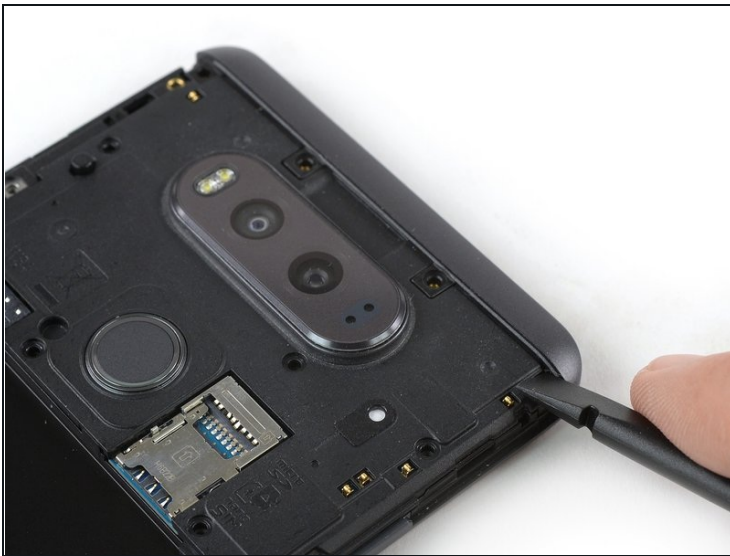
- Insert a spudger or your fingernail under the battery at the small recess on the lower edge.
 - Be careful not to deform or puncture the battery.
- Pry up and remove the battery.

Step 2 — Midframe Assembly



- Remove the sixteen 4mm Phillips #00 screws attaching the back cover to the motherboard.

Step 3



- ⓘ The top and bottom frame section hold very tight to the mid frame. It is possible to pull them off with your hands. If you're not able to do so, use the following removal procedure:
- Use the flat end of a spudger and apply pressure to one of the corners of the frame section until you create a small gap.

Step 4



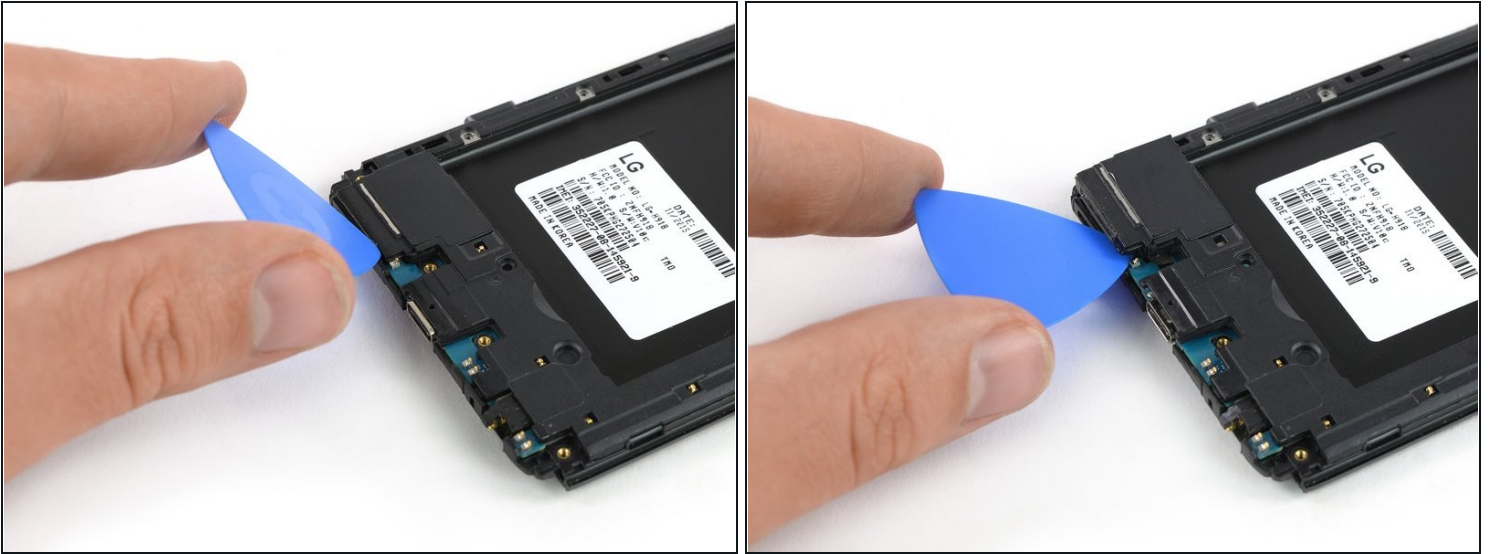
- Flip the phone and insert an opening pick in the gap you created.
- Slide the opening pick along the gap until the frame section pops out of its plastic clamps.

Step 5



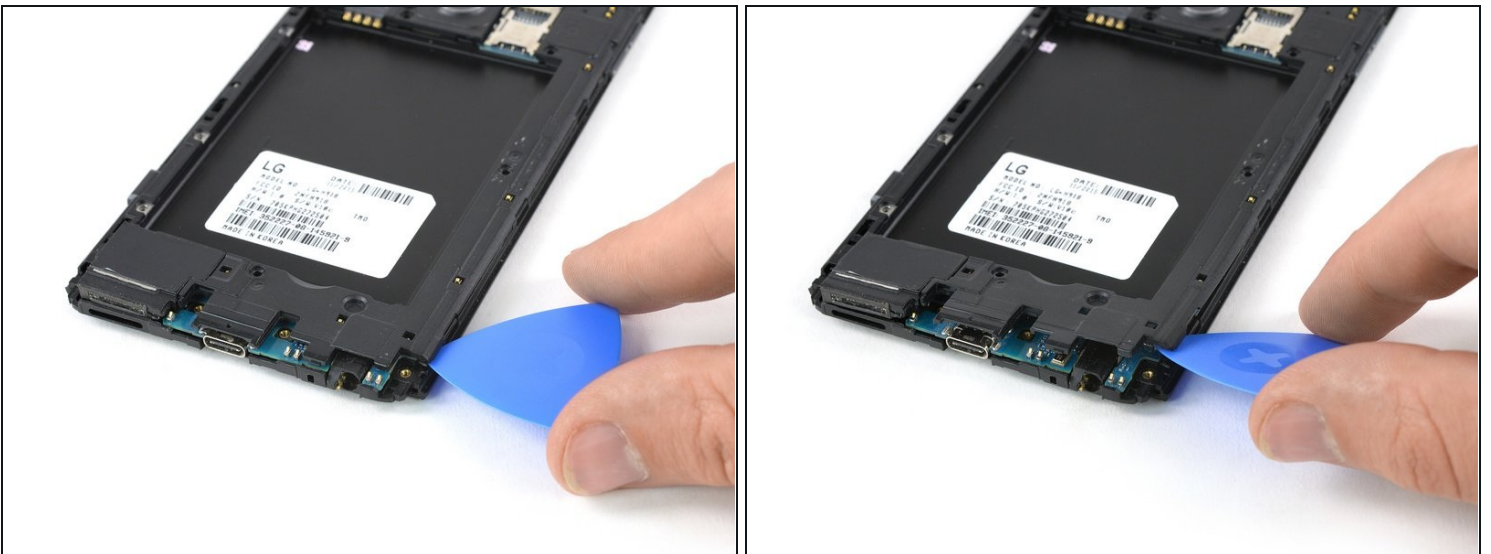
- Remove the frame section.
- Repeat this procedure with the frame section on the other end of the phone.
- ① Within the top frame section there's a small silver grating that covers the speaker. This may fall out, so be careful not to lose it.

Step 6



- The loudspeaker is attached to the cover of the motherboard. Use an opening pick to pry it up.

Step 7



- ① The cover of the motherboard is held in its place by several plastic clamps.
- Use an opening pick to pry up the motherboard cover at the right corner at the bottom of your phone until it pops out of the plastic clamp.

Step 8



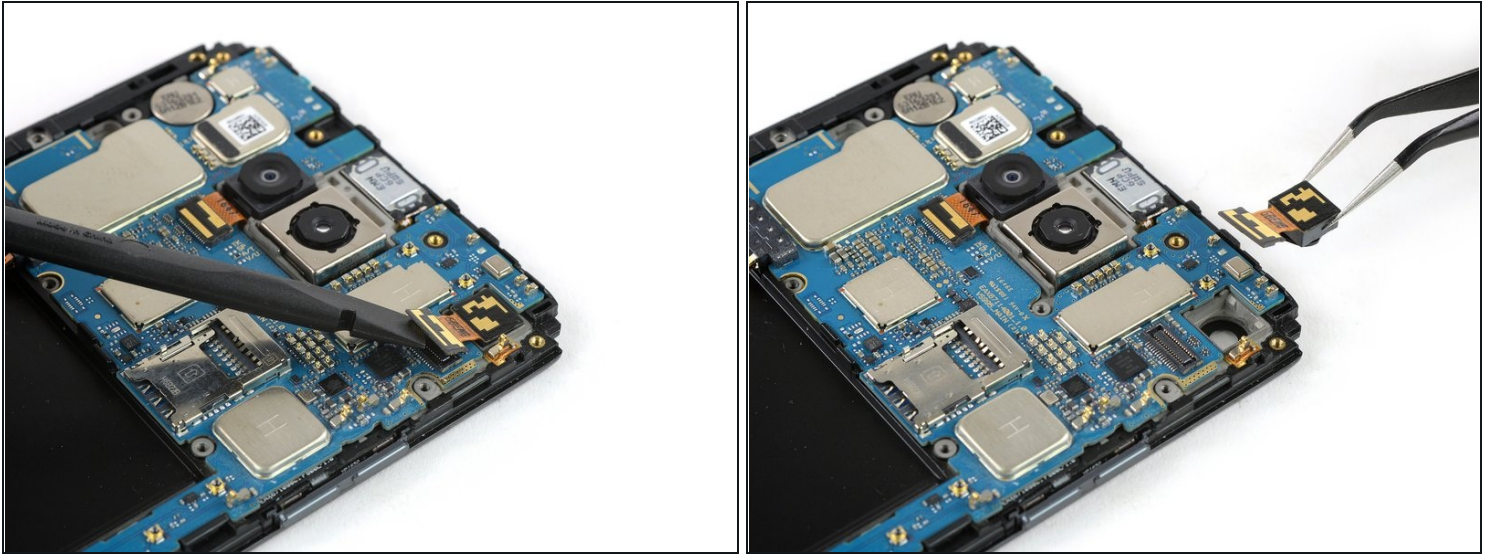
- Slide the opening pick along the mid frame and flip it sideways to open the plastic clamps holding the motherboard cover in its place.

Step 9



- Remove the motherboard cover.

Step 10 — Front-Facing Camera



- Use the flat end of a spudger to disconnect the front camera flex cable.
 - ① If you want to go on and remove the motherboard assembly, there is no need to remove the front facing camera after disconnecting it. However if you feel uncertain, carefully remove it with a pair of [tweezers](#).
- Use a pair of tweezers to carefully remove the front facing camera. Be careful to only grip the body of the camera, as the top is the sensor pcb and is only held on with glue (removal will ruin the sensor).

To reassemble your device, follow these instructions in reverse order.