



HP Chromebook 11 G3 SD Card Reader Module Replacement

This guide walks through replacing a faulty SD...

Written By: Rahul Goyal



INTRODUCTION

This guide walks through replacing a faulty SD card reader module. It requires removing the keyboard mount. Afterwards, it is relatively simple and requires only a Phillips head screwdriver and a spudger to finish removal.

TOOLS:

[iFixit Opening Tool](#) (1)
[Tweezers](#) (1)
[Phillips #00 Screwdriver](#) (1)
[Spudger](#) (1)

PARTS:

[HP Chromebook 11 G3/G4 SD Memory Card Reader](#) (1)

Step 1 — Keyboard Mount



- Flip the laptop upside down so that the lid lies flat on the table.
- Remove the nine 6mm Phillips #00 screws that line the border.

Step 2



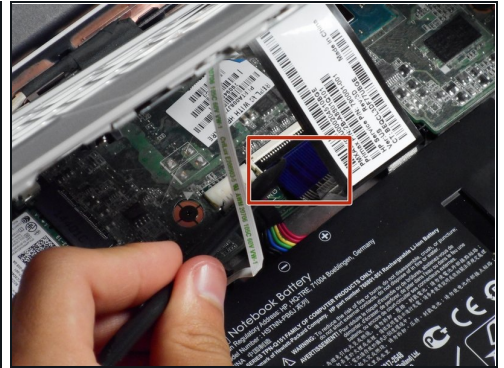
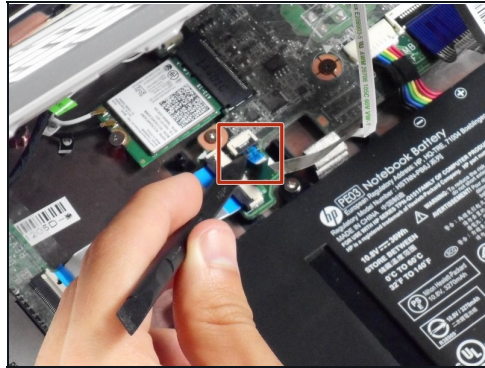
- Remove the two rubber feet closest to the hinge using [tweezers](#).
- Remove the two 6mm Phillips #00 screws revealed under these rubber feet.
- ① The rubber feet may tear while removal; preventing this can be difficult, but it won't harm the laptop. If desired, replace these rubber feet during reassembly.

Step 3



- Flip the laptop so it is in the upright position.
- Open the lid.
- Unsnap the keyboard mount along the border of the laptop using a plastic opening tool.
- ① This may require more force than expected. Hearing loud clicks as the plastic opening tool slides along the seam is normal.

Step 4



- Tilt the keyboard mount up.
- Use a spudger to flip up the two ZIF connector retaining flaps for the ribbon cables that connect the keyboard mount to the motherboard.
- Gently remove both ribbon cables.

Step 5



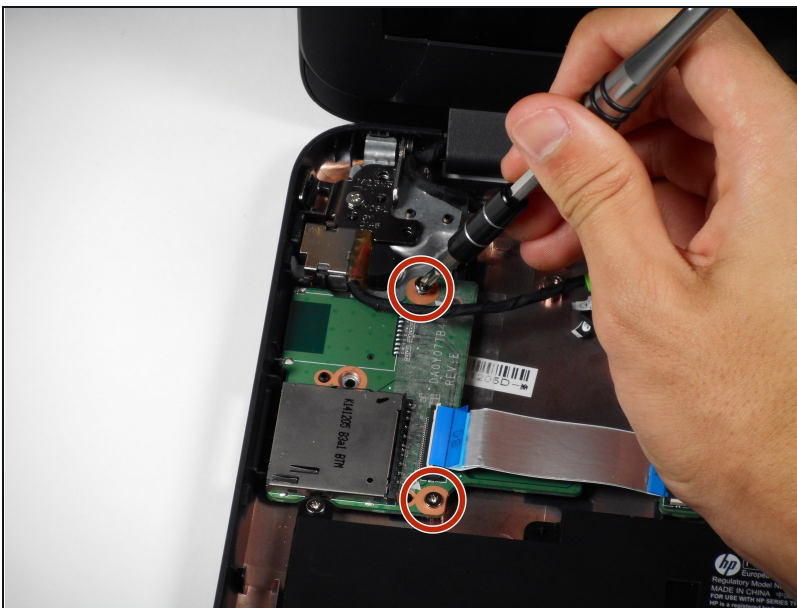
- Lift the keyboard mount out of the laptop.

Step 6 — SD Card Reader Module



- On the module, use a spudger to lift the small ZIF retaining flap for the ribbon cable connecting the SD card reader to the motherboard.
- Gently pull the ribbon cable out of its socket.

Step 7



- Remove the two Phillips #00 6mm screws that attach the module to the laptop.

Step 8



- Lift the module up and out of the laptop.

To reassemble your device, follow these instructions in reverse order.