



# HP Chromebook 11 G3 Touchpad Replacement

How to replace the HP Chromebook 11 G3's touchpad.

Written By: Rahul Goyal



## INTRODUCTION

This guide walks through the replacement of the HP Chromebook 11 G3's touchpad. It will require the use of tweezers, a Phillips head screwdriver, and a spudger.



### TOOLS:

- [Spudger](#) (1)
- [iFixit Opening Tools](#) (1)
- [Phillips #00 Screwdriver](#) (1)
- [Tweezers](#) (1)



### PARTS:

- [HP Chromebook 11 G3/G4 Touchpad](#) (1)

## Step 1 — Keyboard Mount



- Flip the laptop upside down so that the lid lies flat on the table.
- Remove the nine 6mm Phillips #00 screws that line the border.

## Step 2



- Remove the two rubber feet closest to the hinge using tweezers.
- Remove the two 6mm Phillips #00 screws revealed under these rubber feet.
- ⓘ The rubber feet may tear while removal; preventing this can be difficult, but it won't harm the laptop. If desired, replace these rubber feet during reassembly.

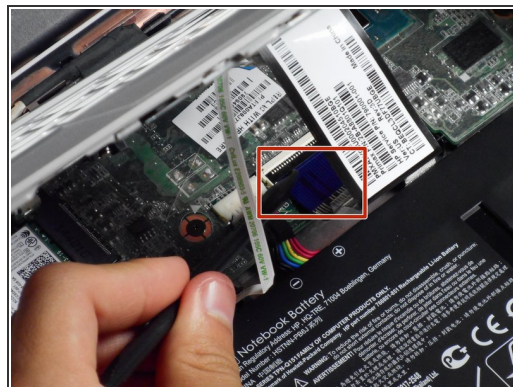
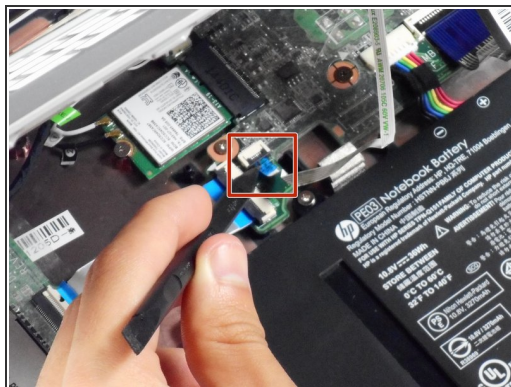
## Step 3



- Flip the laptop so it is in the upright position.
- Open the lid.
- Unsnap the keyboard mount along the border of the laptop using a plastic opening tool.
- ⓘ This may require more force than expected. Hearing loud clicks as the plastic opening tool slides along the seam is normal.



## Step 4



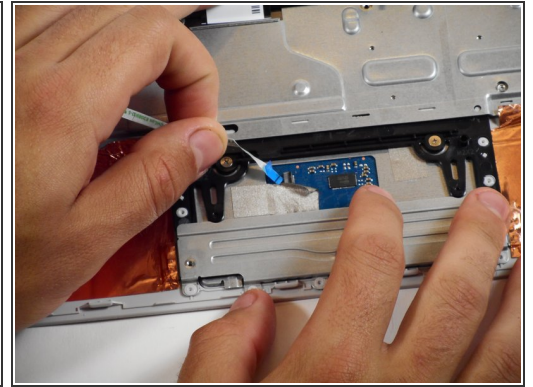
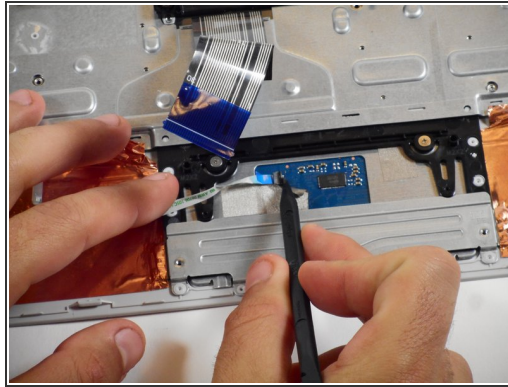
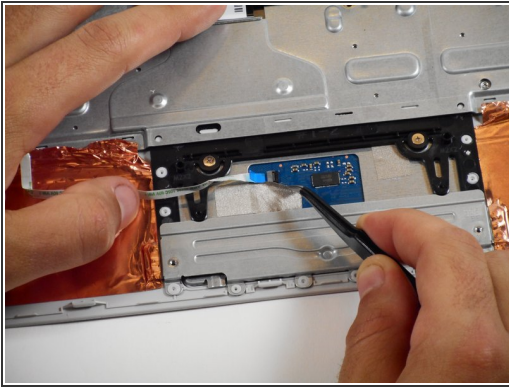
- Tilt the keyboard mount up.
- Use a spudger to flip up the two ZIF connector retaining flaps for the ribbon cables that connect the keyboard mount to the motherboard.
- Gently remove both ribbon cables.

## Step 5



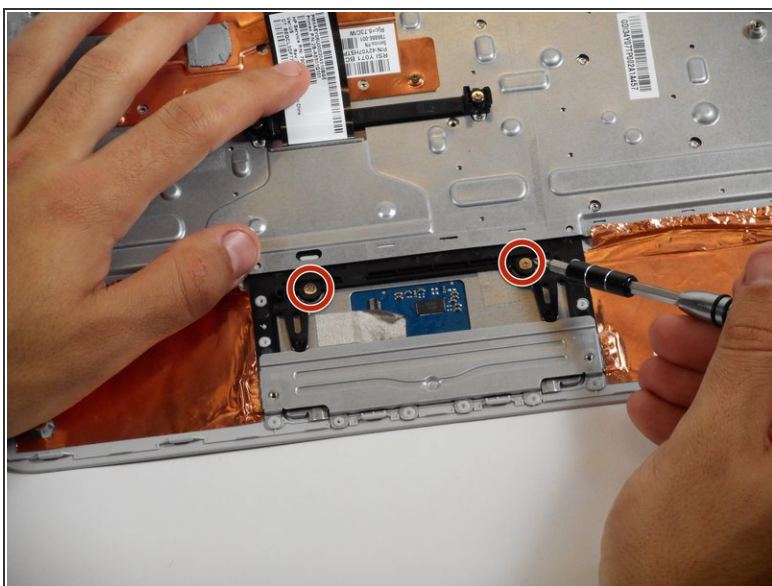
- Lift the keyboard mount out of the laptop.

## Step 6 — Touchpad



- Flip the keyboard mount upside down.
- Use tweezers to lift the tape on the bottom of the touchpad to expose the connector.
- With a spudger, push up the ZIF retaining flip.
- Pull out the small ribbon cable.

## Step 7



- Remove the two Phillips #00 2mm screws that secure the touchpad to the black plastic housing.
- Flip the keyboard mount to the upright position.
- From beneath, push the touchpad up through the top of the keyboard mount to remove it.

To reassemble your device, follow these instructions in reverse order.