



# Internal Battery Circuit Connector

This guide will teach the reader to install a...

Written By: Nick Oleskowicz



---

## INTRODUCTION

This guide will teach the reader to install a new Battery Circuit Connector into the battery case. This may need to be done if the batteries are not delivering electricity into the camera.

---

### TOOLS:

- [64 Bit Driver Kit](#) (1)
-

## Step 1 — Batteries



- Flip the camera over so the bottom of the camera is facing you.

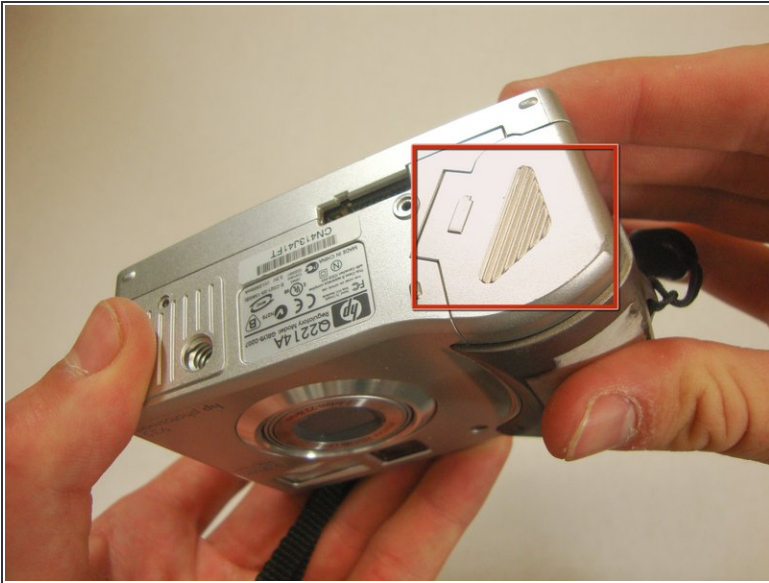
## Step 2



- Turn the mode dial to the OFF position.

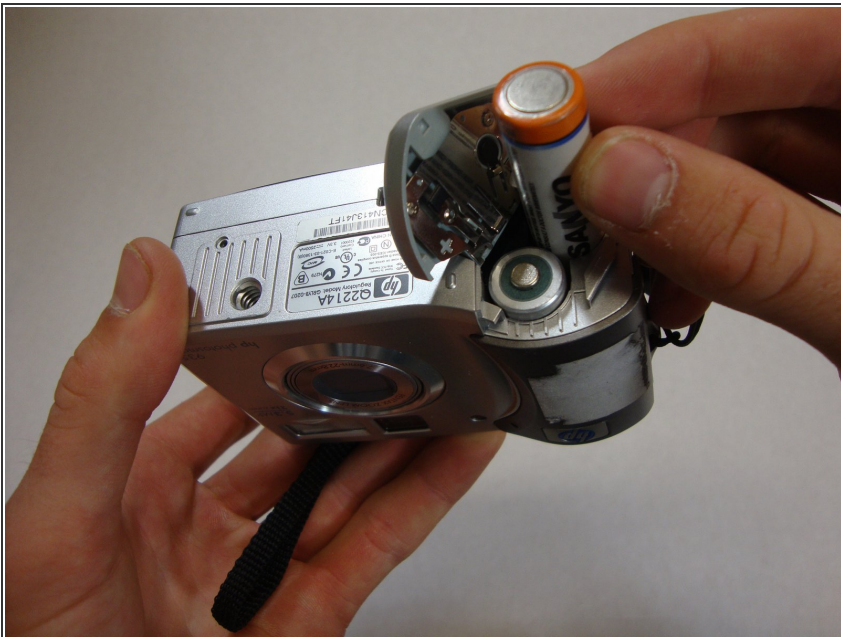


## Step 3



- Slide the bottom cover in the direction of the arrow to open it.

## Step 4



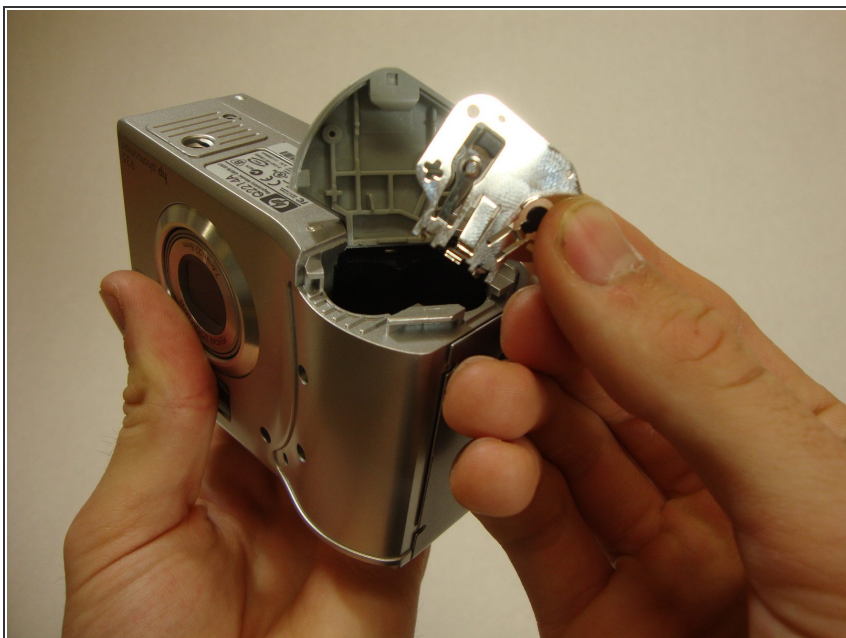
- Pull out the batteries.

## Step 5 — Internal Battery Circuit Connector



- Remove the three screws from the circuit connector.

## Step 6



- Remove the connector from the battery holder door.

To reassemble your device, follow these instructions in reverse order.