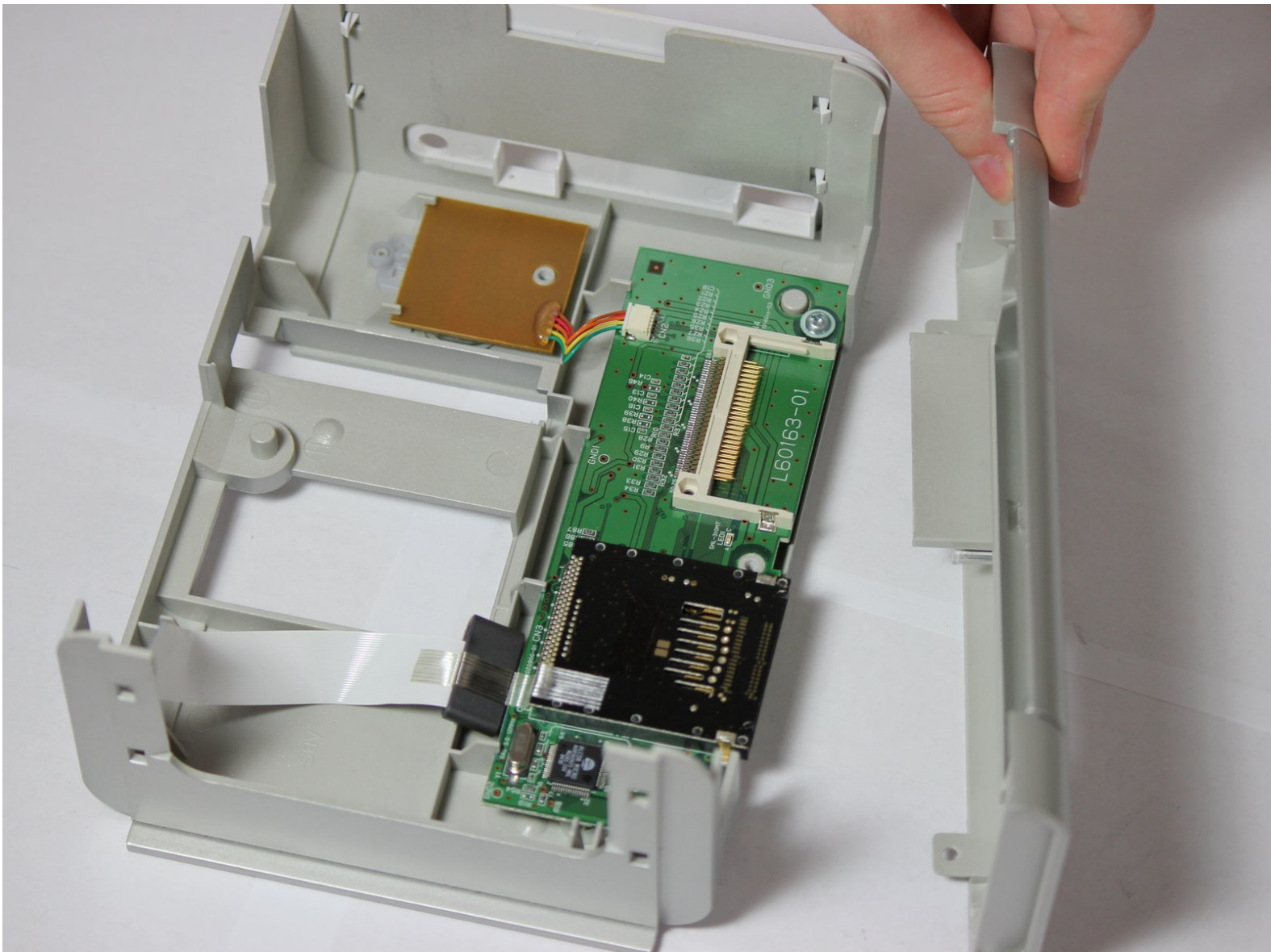




Dell Photo Printer 540 Removal of the Control Panel Motherboard Replacement

This repair guide will guide you through removing the control panel motherboard to gain access to the power switch and memory card reader.

Written By: Kishan Patel



INTRODUCTION

This guide is a preliminary guide to accessing the control panel motherboard. This motherboard controls the control keys of the printer.



TOOLS:

- [Phillips #1 Screwdriver](#) (1)
 - [Phillips #2 Screwdriver](#) (1)
-

Step 1 — Case



- Rotate the photo printer so that the bottom of the case faces upward.

Step 2



- Use a Phillips #2 screwdriver to remove the three 5.65 mm screws on the bottom panel of the case in a counter-clockwise fashion.

Step 3



- Rotate the device so that it is upright again. Under the LCD Panel there is a 9.62 mm screw, unscrew using a Phillips #2 screwdriver.

Step 4



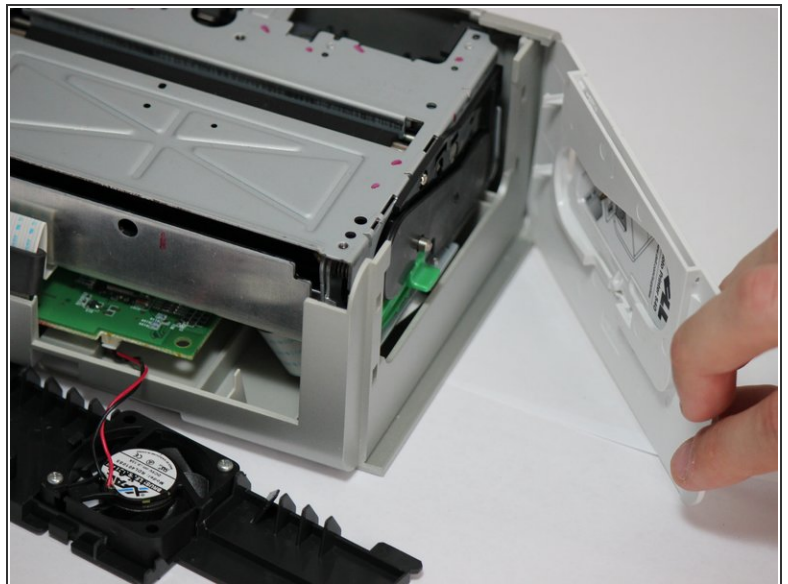
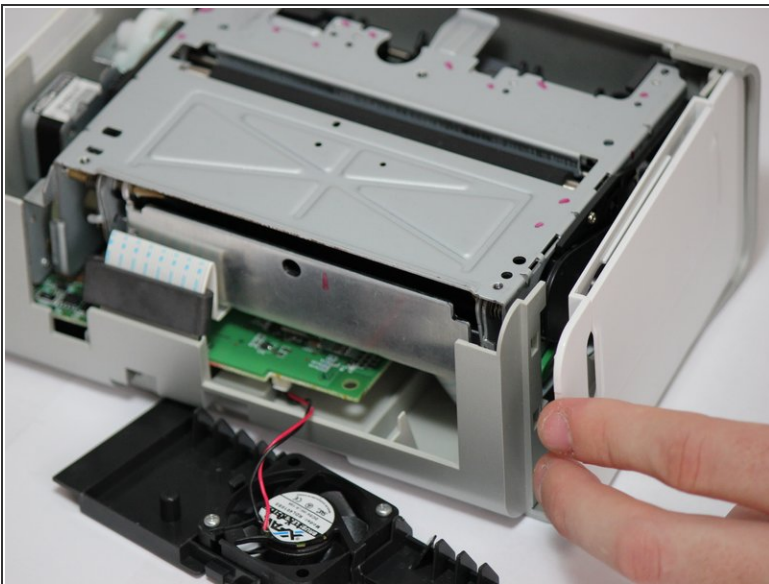
- Remove the back panel of the case by pulling directly back.
- ⓘ Some carefully applied force may be required to remove this part.

Step 5




- Rotate the photo printer so that the bottom panel faces up once again. Now lift off the bottom panel of the case to access all internal components.

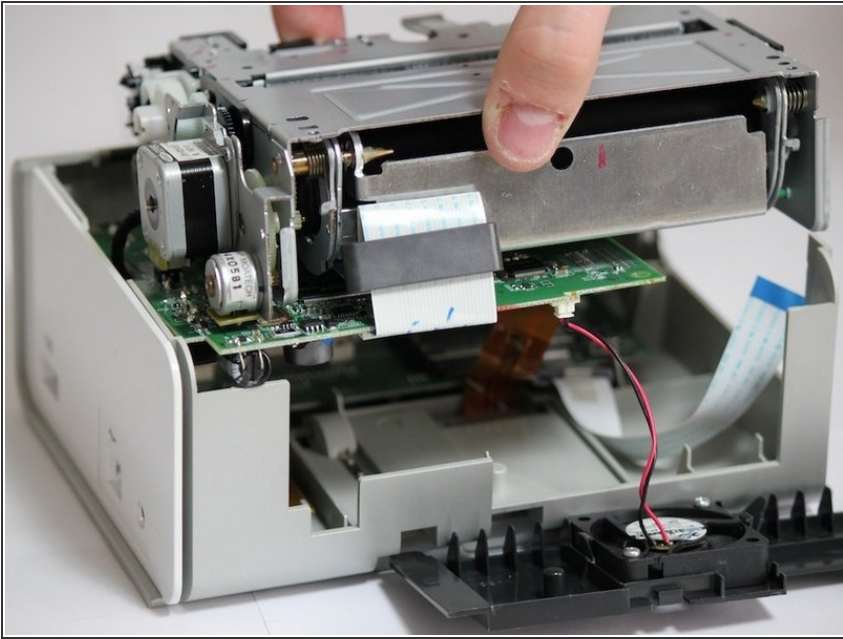
Step 6



- Finally remove the side panel with the ink-cartridge door by holding the right side and pulling backwards with the left side.

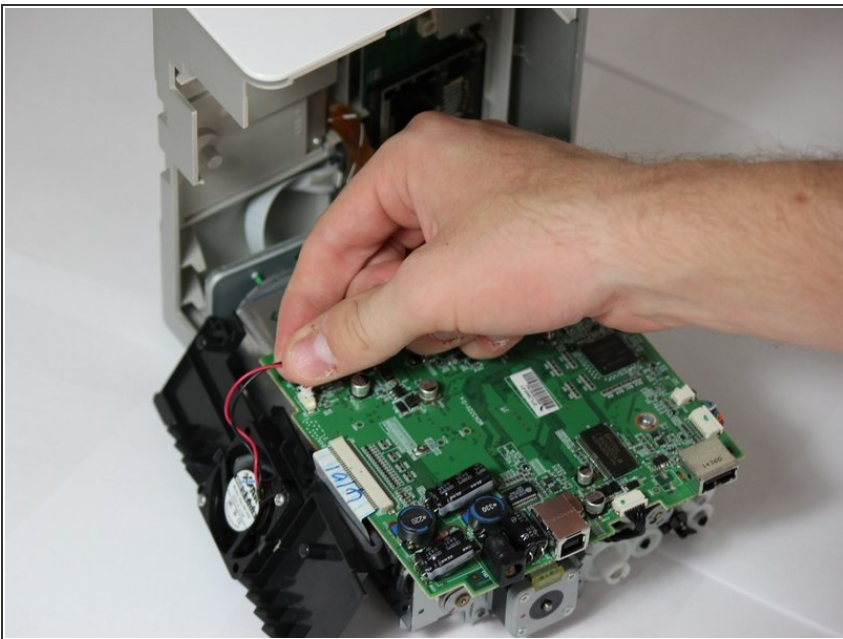
 Caution! The side panel is held in by tabs; don't break these.

Step 7 — Cooling Fan



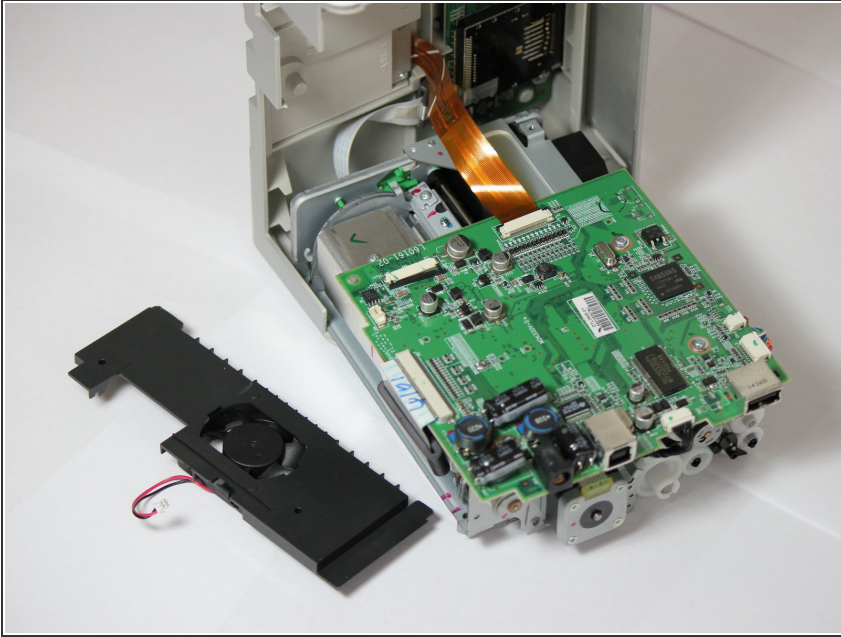
- Carefully remove the inner components of the device by lifting the inner components up and out of the casing.

Step 8



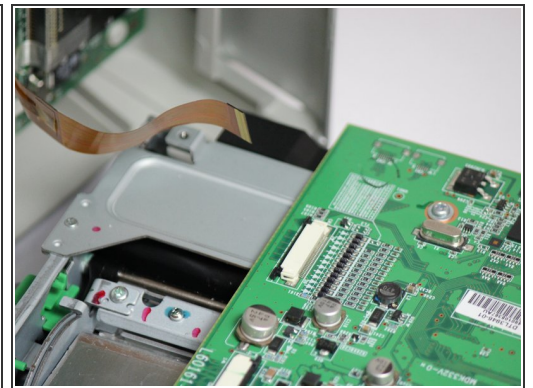
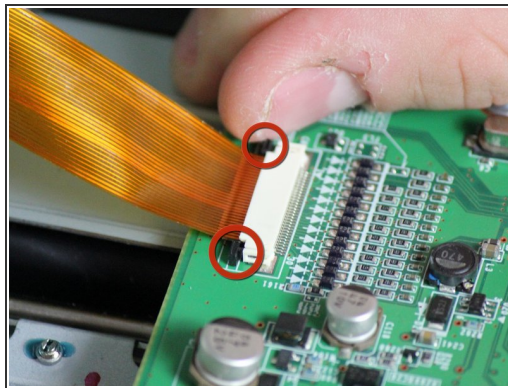
- Locate the red and black cable that is connecting the fan to the top of the logic board.

Step 9



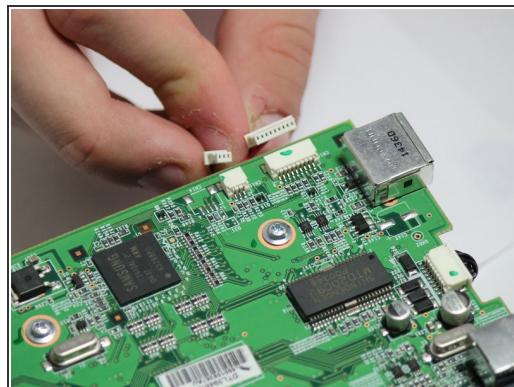
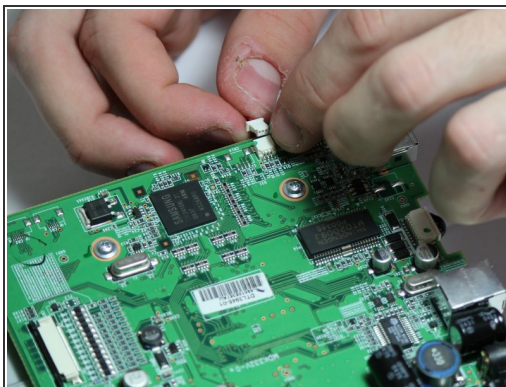
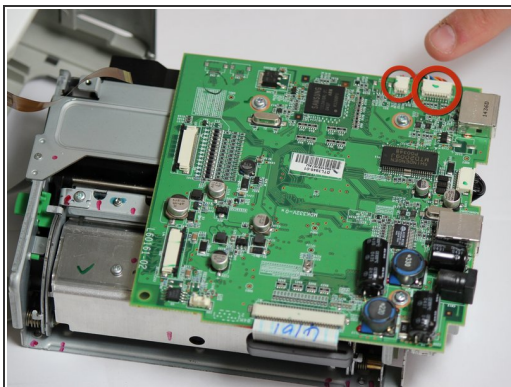
- Carefully, remove the red and black cable from the logic board by pulling gently in order to isolate the cooling fan from the device.

Step 10 — Mother Board



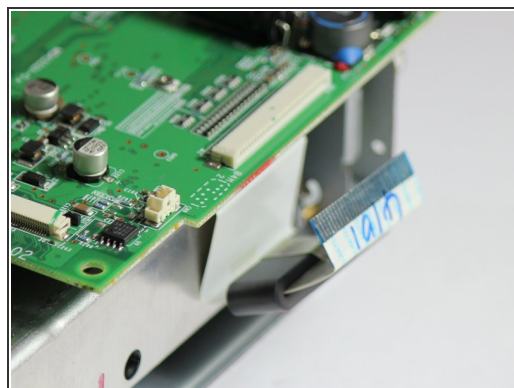
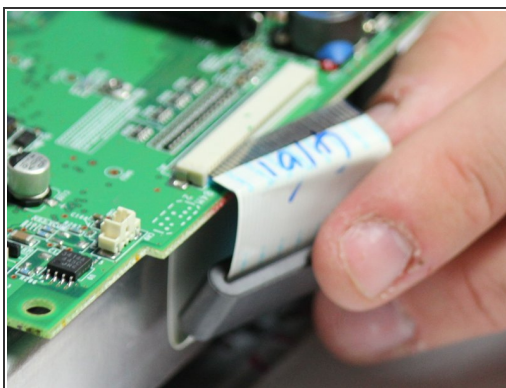
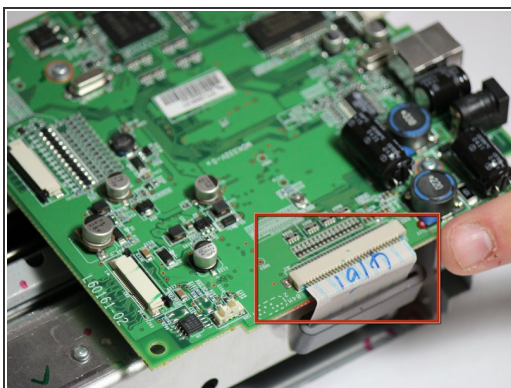
- Locate the data ribbon that connects the LCD panel to the mother board.
- Loosen the fasteners next to the ribbon by carefully pushing them away from the white ribbon holder.
- ⓘ Once the fasteners are loosened the ribbon should easily slide away from the motherboard.

Step 11



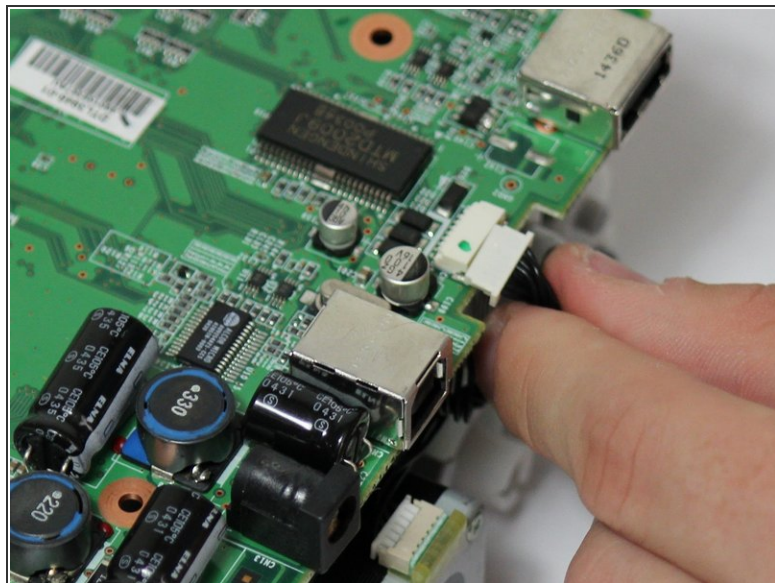
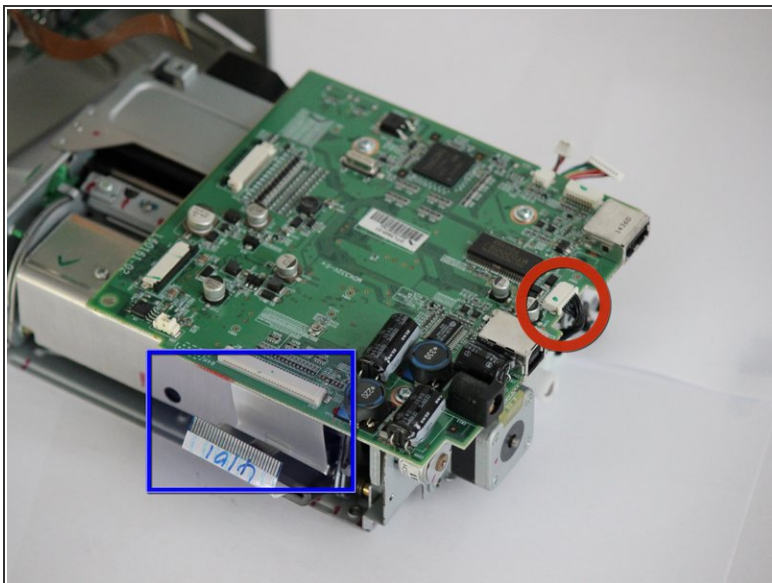
- Locate the clips with multi-colored wires that connect the motherboard to the printing unit.
- ⓘ Disconnect both of them by gently pulling them away from the motherboard.

Step 12



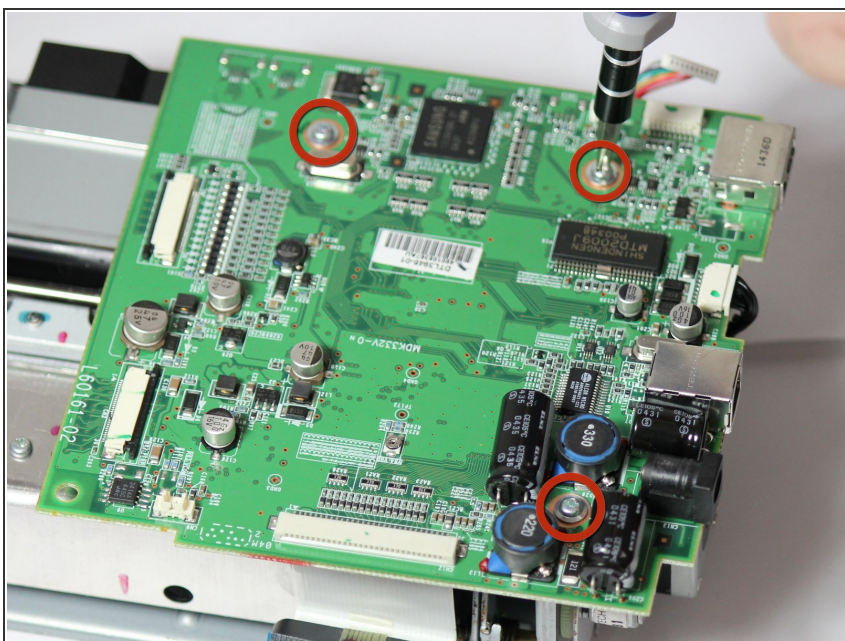
- Locate the white ribbon that connects the motherboard to the printing feed.
- Disconnect the ribbon by gently pulling the ribbon away from the motherboard.

Step 13



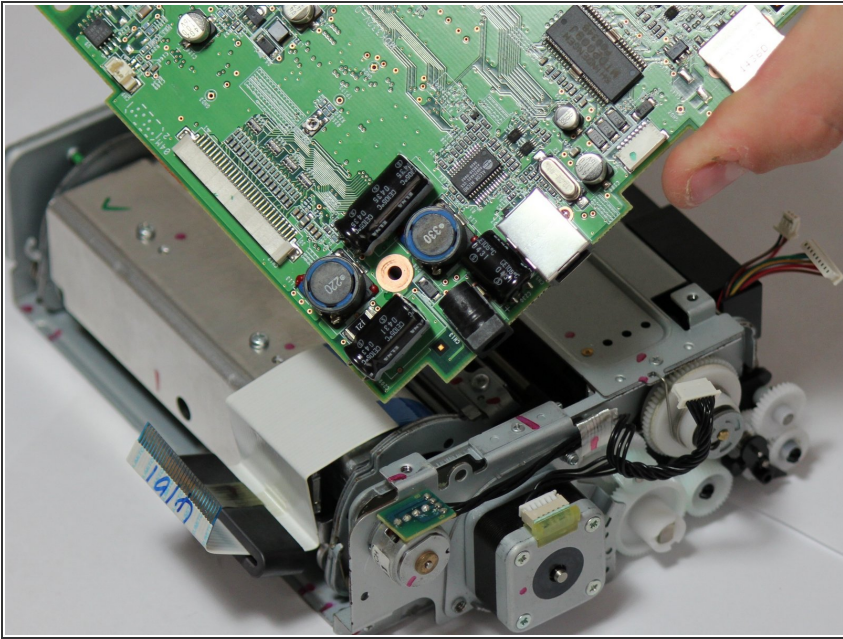
- The motherboard has changed orientation. Notice the new orientation based on the white data ribbon we removed in the previous step.
- Locate the black data ribbon that connects the motherboard to the printing motors.
- Disconnect it from the logic board, by gently pulling the wire away from the motherboard.

Step 14



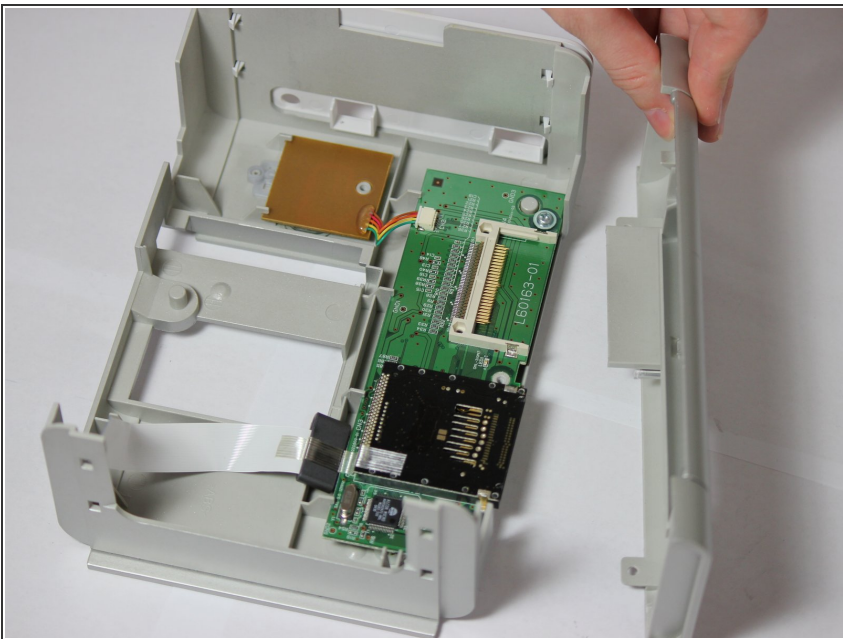
- Now unscrew the three screws 7.89mm (counter-clockwise) using a Phillips #1 screwdriver.

Step 15



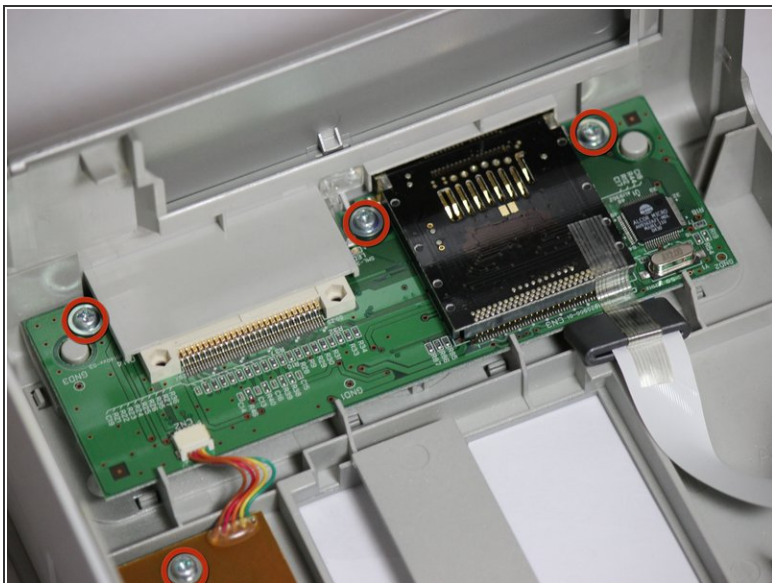
- Once screws and ribbons are disconnected, you can pull mother board away from the printing unit.

Step 16 — Removal of the Control Panel Motherboard



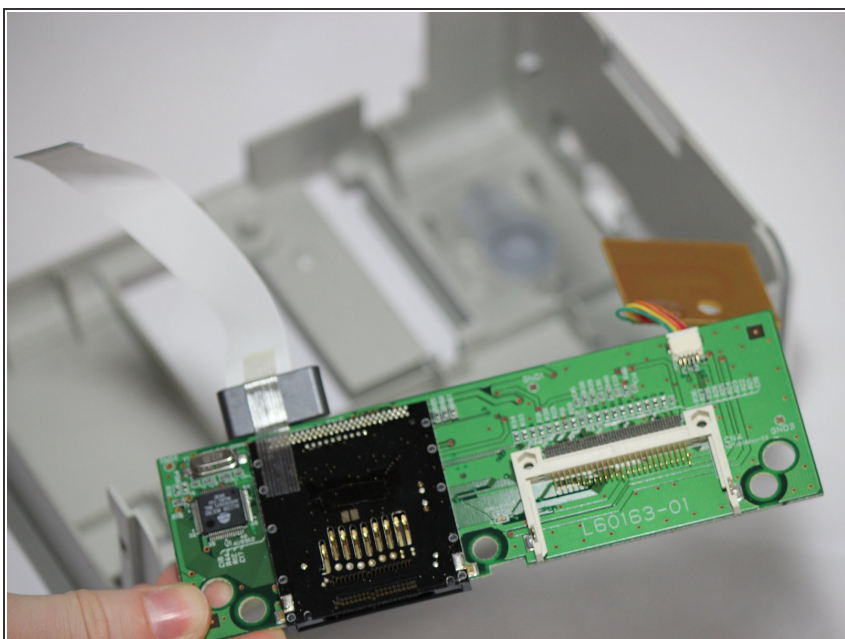
- Gain access to the bottom of the top case with a thin horizontal control panel motherboard attached to the bottom.
- Remove the front panel.
 - The dell top casing should now only have two sides.

Step 17



- Locate the four 7.85 mm screws attaching the control panel motherboard to the top face casing.
- Use a Phillips Head #1 screw driver to remove the four highlighted screws.
- NOTE: Make sure removal of front face plate is completed.

Step 18



- Gently lift the horizontal control panel motherboard and square power switch board.
- Completely detach the motherboard from the face casing.
- NOTE: Leave the power switch control attached to the main control panel motherboard.

To reassemble your device, follow these instructions in reverse order.