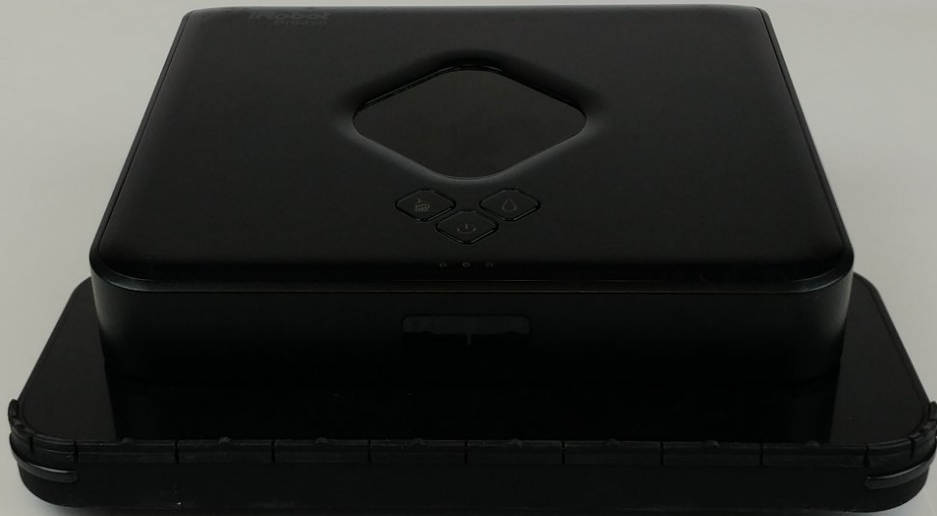




iRobot Braava 380t Battery Replacement

Guide on how to replace the battery.

Written By: Jon Michael Burmeister



**TOOLS:**

- [Flathead Screwdriver](#) (1)

**PARTS:**

- [Replacement Battery](#) (1)

Step 1 — Battery



- Flip device upside down

Step 2



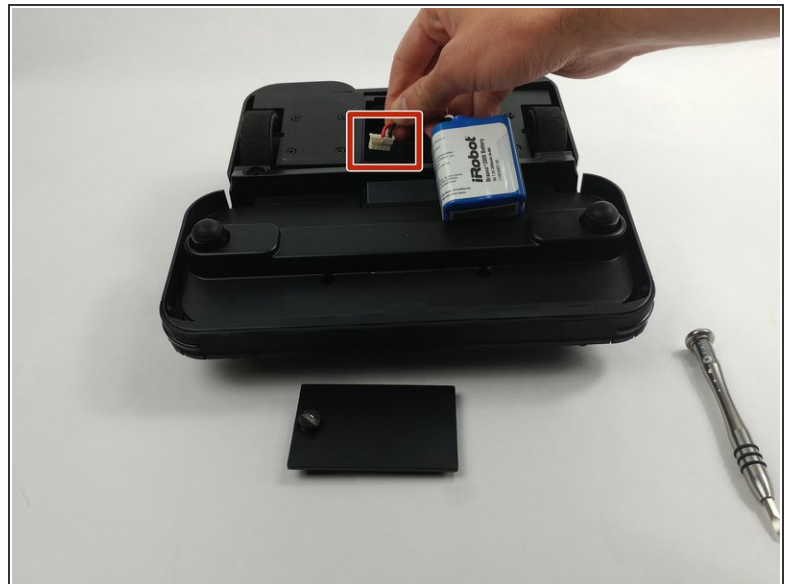
- Using a 4mm flat head screw driver, remove the screw holding the battery cover.

Step 3



- Remove cover and place it to the side.

Step 4



- Lift battery out of the casing
- Gripping the cord close to the base, gently disconnect it by pulling straight up.

To reassemble your device, follow these instructions in reverse order.