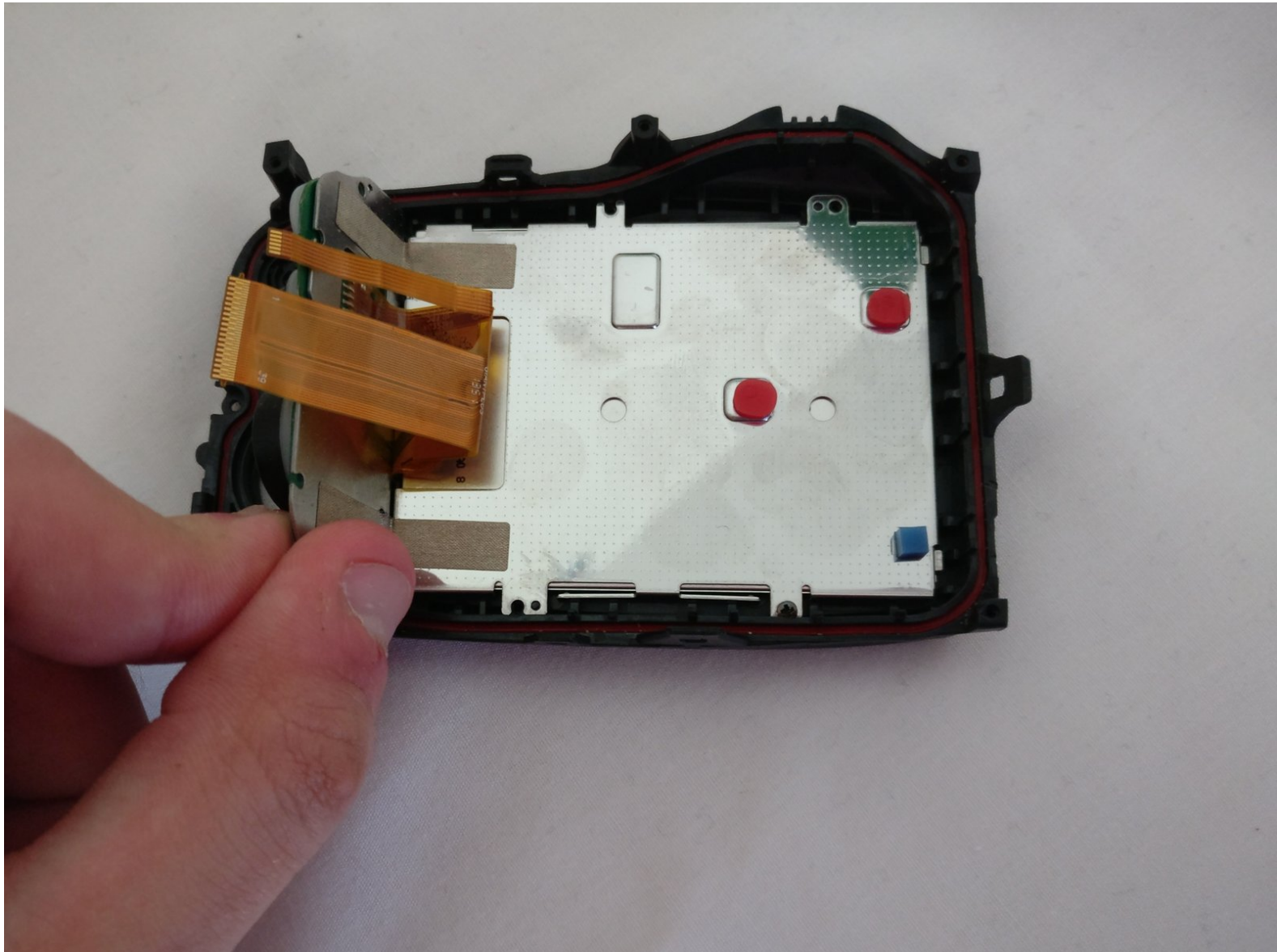




# Fujifilm FinePix XP70 Back Button Replacement

This guide will enable the user to replace the back panel buttons in the FujiFilm FinePix XP70.

Written By: sandino santos



# INTRODUCTION

This guide will enable the user to replace the back panel buttons in the FujiFilm FinePix XP70.



## TOOLS:

- [iFixit Opening Tools](#) (1)
  - [Phillips #0 Screwdriver](#) (1)
  - [Metal Spudger](#) (1)
  - [1.5mm Hex Screwdriver](#) (1)
-

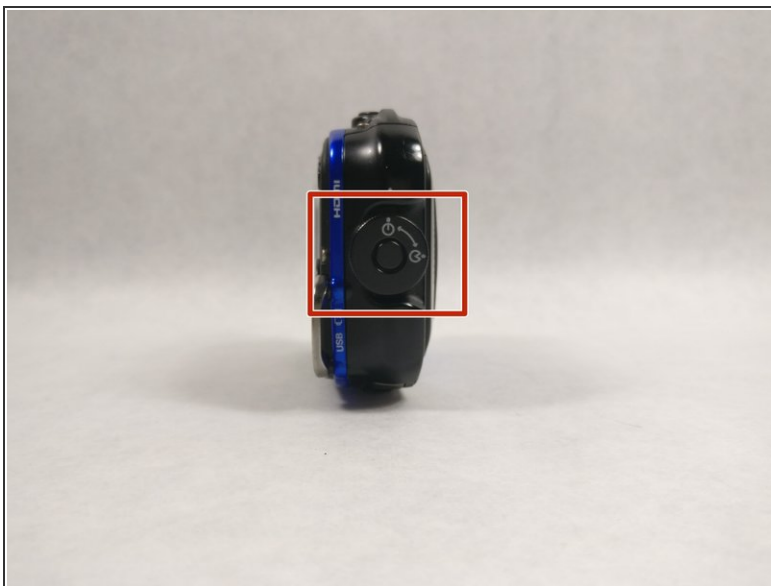
## Step 1 — Battery



- Power off the camera.

⚠ Leaving the camera on while removing presents the risk of electrical shock or permanent data loss.

## Step 2



- Push down on the center button and turn the dial on the side counterclockwise to open the battery compartment.

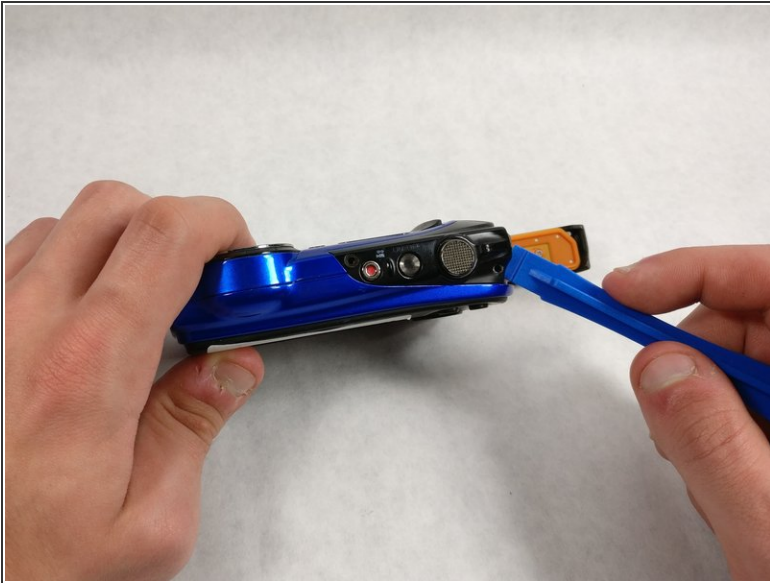
## Step 3



- Pull the orange tab towards the hinge to release the battery.



## Step 4 — Button



- Pry the black button plate off using a plastic opening tool.
- ⓘ Buttons can fall out easily.
- ⓘ It's easiest to start from the side exposed by an open battery compartment.
- ✦ When putting this plate back on, orientate the buttons as shown to properly fit back into the plate.

## Step 5



- Pull the three buttons out.

## Step 6 — Front and Back Panel



- Remove one Phillips screw with a Phillips head 0 screwdriver
- Remove one hex head screw with a hex 1.3 screwdriver bit.

## Step 7



- Unscrew two 4.0mm long hex head screws with a hex 1.3 screwdriver bit.

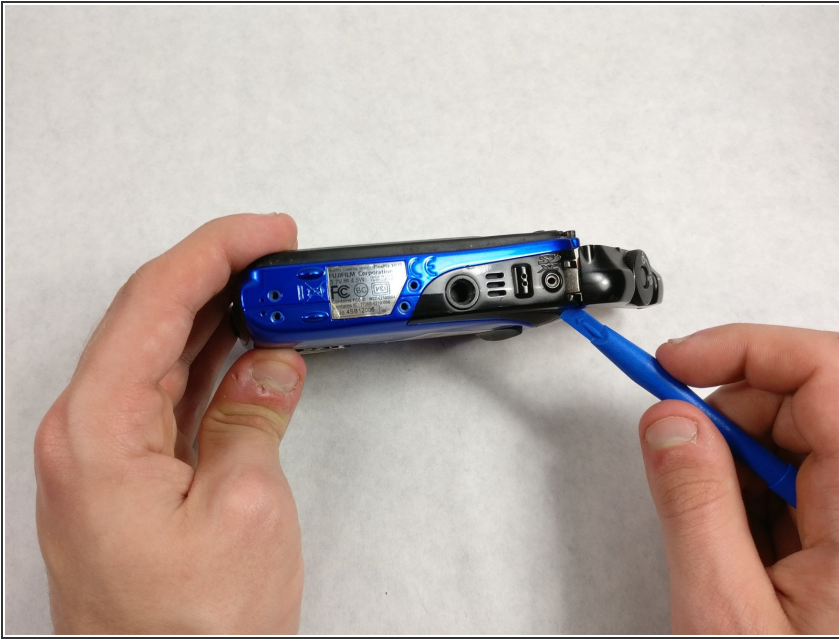
## Step 8



- Unscrew five 4.0mm screws with a Phillips head 0 screwdriver



## Step 9



- Pry the black bottom plate off using a plastic opening tool.
- ⓘ It is easier to start on the side of the open battery compartment.

## Step 10



- Pry the front plate off using a plastic opening tool.
- ⓘ It's recommended to start at the ridge on the top or bottom side.



## Step 11



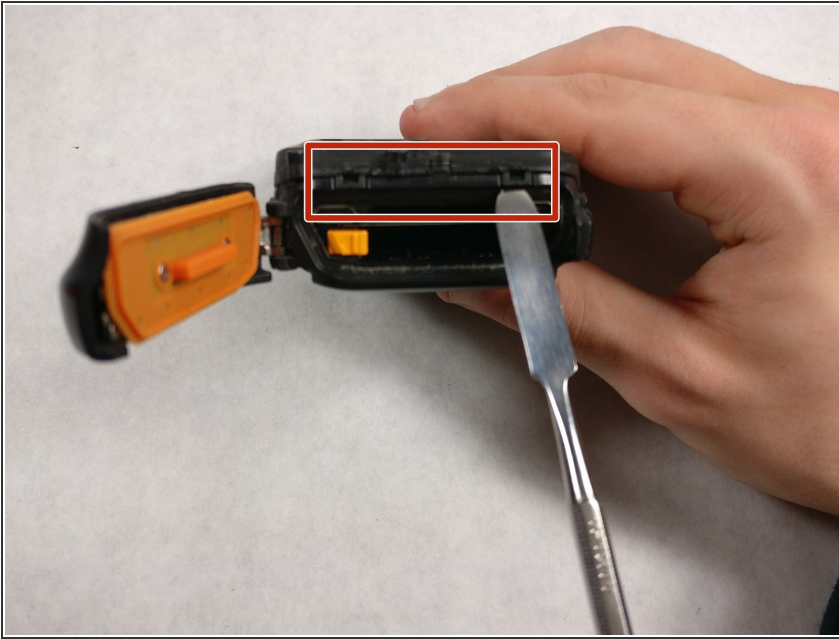
- Lift off the front plate.

## Step 12



- Pry the back plate off with a plastic opening tool

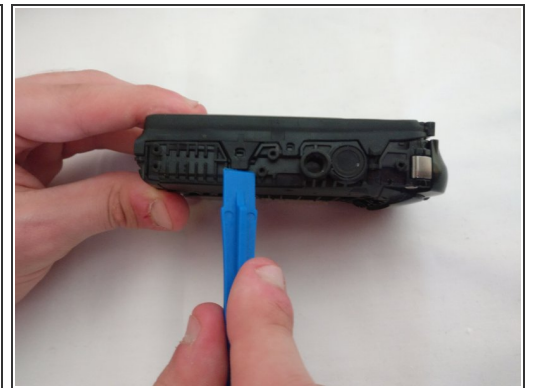
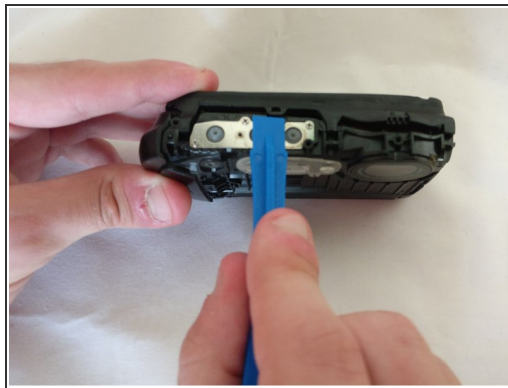
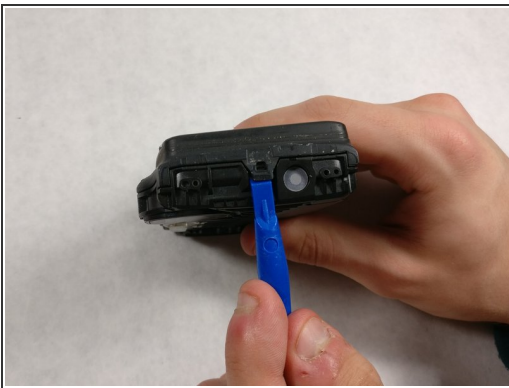
## Step 13 — Back Panel



- Pry the two latches off using a spudger.

ⓘ It takes some force to pry the latches off, so be careful to not break them.

## Step 14

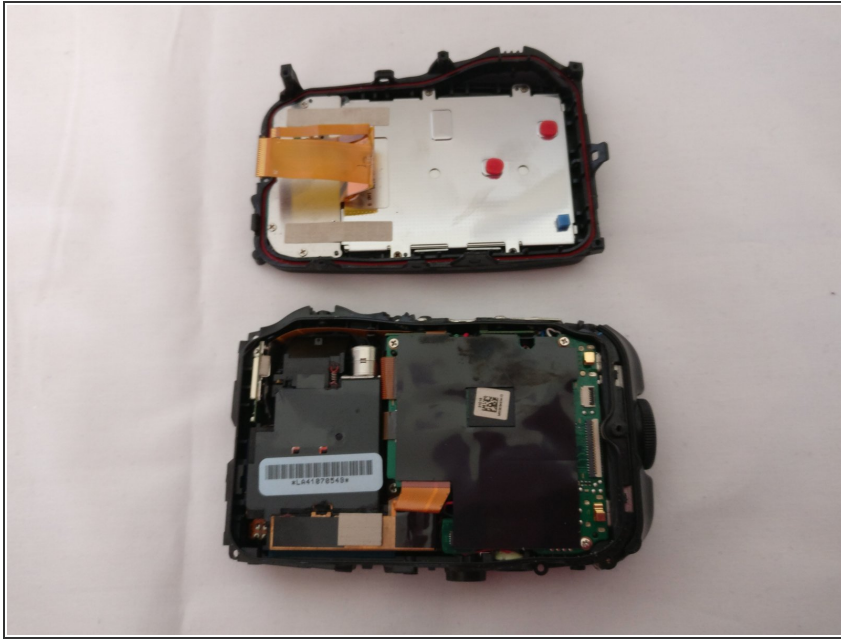


- Pry the remaining latches with a plastic opening tool.

ⓘ It's best to start on the opposite side. Then pry off the top and end at the bottom.

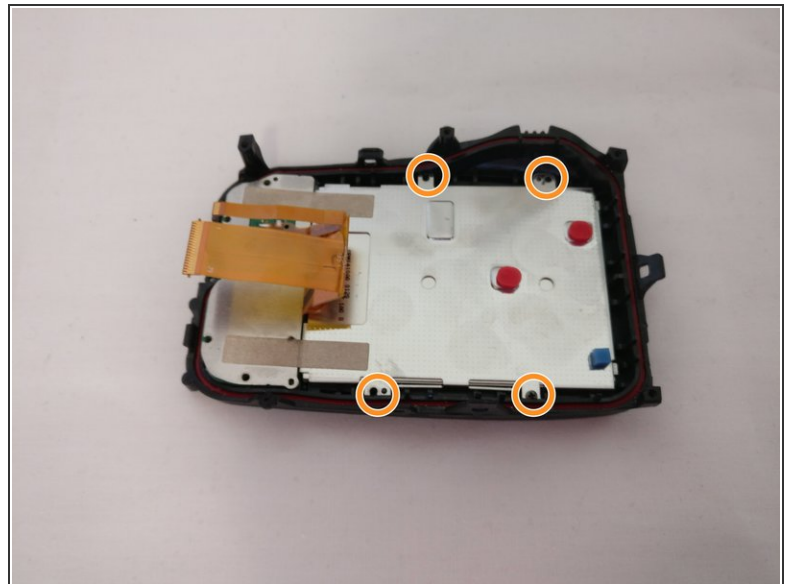
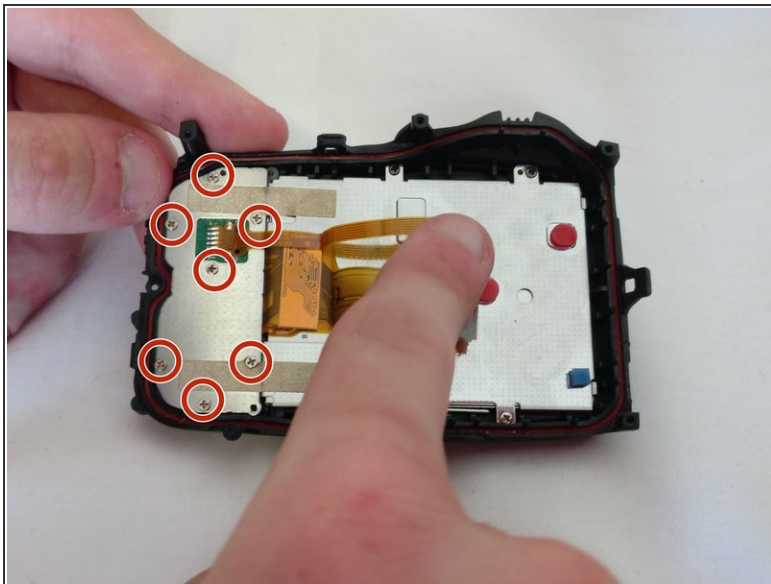
ⓘ It may take some force to remove this, but be careful to not break the latches off.

## Step 15



- Pull the two halves apart.
- ☑ Reattach the LCD ribbon cable into the slot before closing the halves when reassembling.

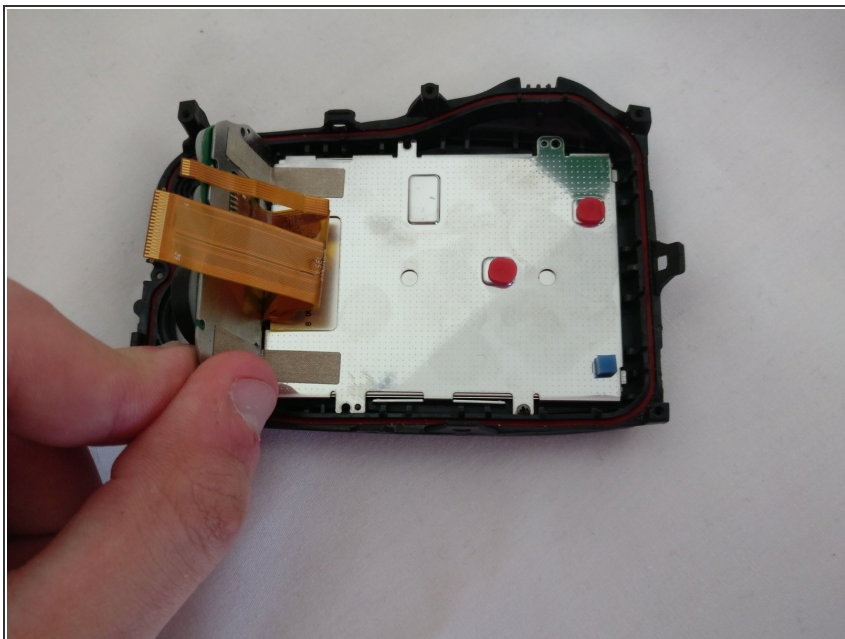
## Step 16



- Unscrew seven 4.0 mm screws with a Phillips 00 screwdriver.
- Unscrew four 3.0 mm screws with a Phillips 00 screwdriver..

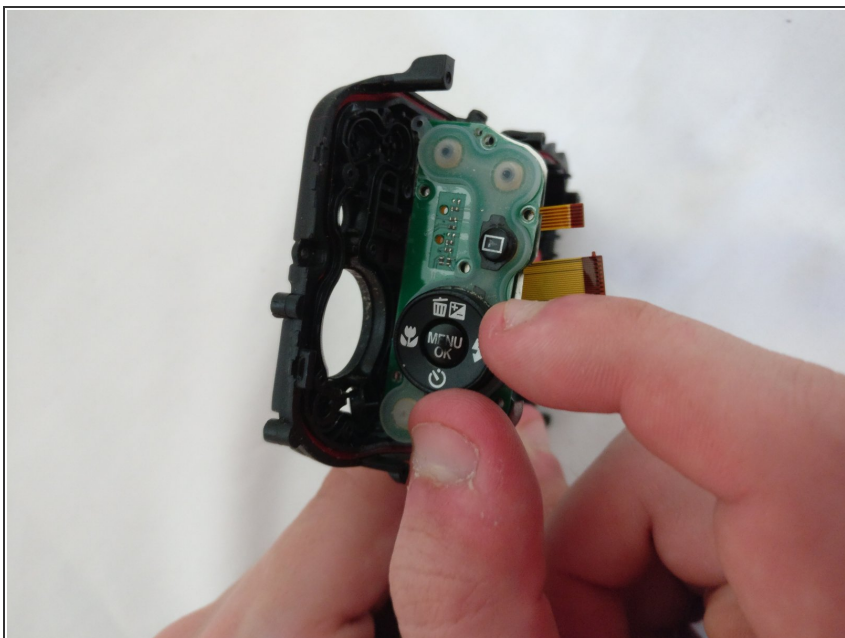


## Step 17 — Back Button



- Lift of the metal panel using a plastic opening tool.

## Step 18



- Remove the desired button(s).
- ⓘ Handle the buttons with care since they easily fall off.

To reassemble your device, follow these instructions in reverse order.