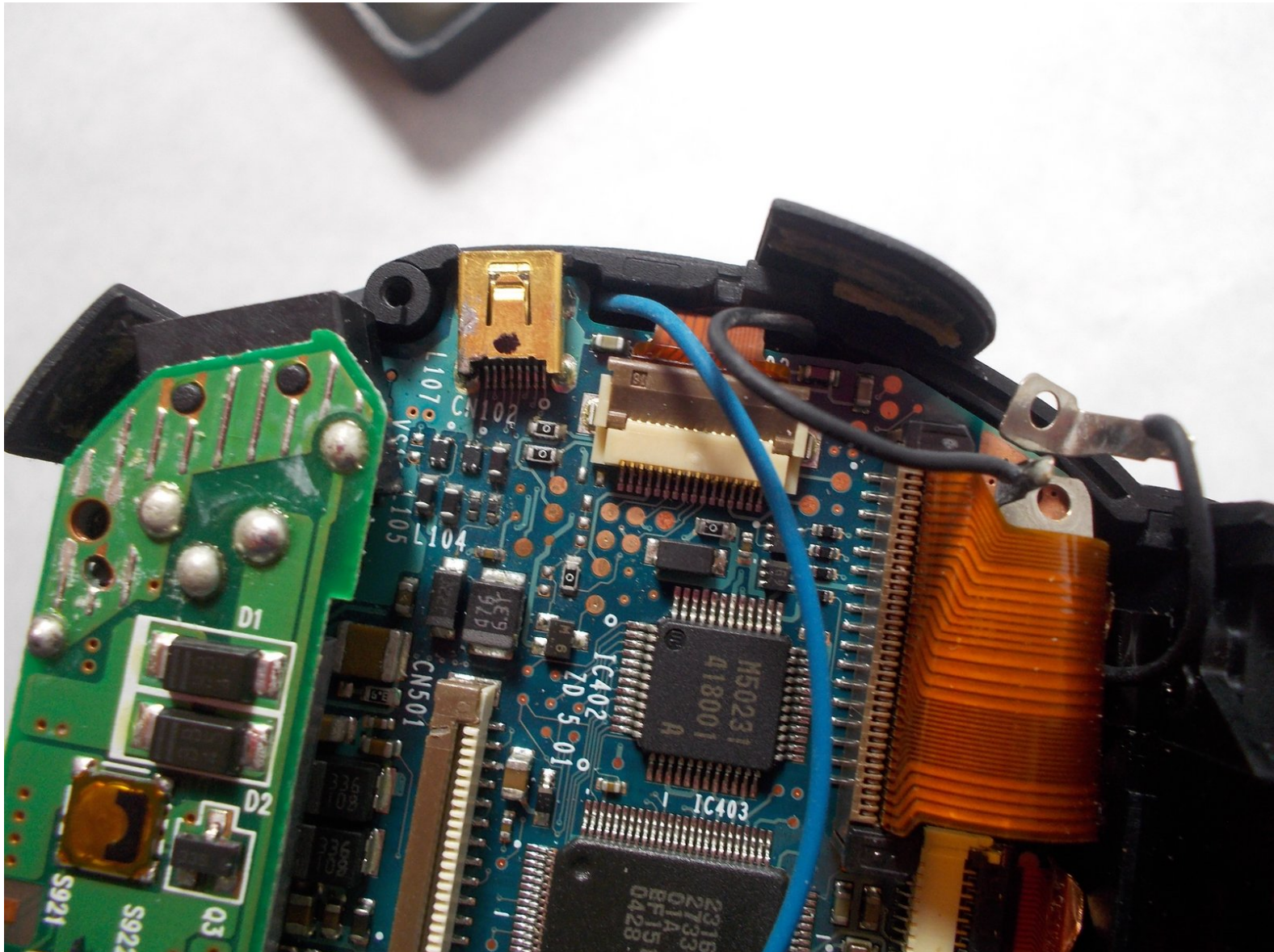




How to replace the Konica Minolta DiMAGE Z3 A/V port

Replace the A/V port in the Konica Minolta DiMAGE Z3

Written By: Hieu Ngo



INTRODUCTION

An Audio/Visual port enables a device to send or receive sounds and images. If these are not coming through, the A/V port may be at fault. If the A/V port is determined to be faulty, this guide will demonstrate how to replace the A/V port in the Konica Minolta DiMAGE Z3. This repair is not only relatively expeditious, but also relatively easy, and requires no major technical skills to complete.



TOOLS:

- [Phillips #00 Screwdriver](#) (1)
 - [Spudger](#) (1)
 - [Tweezers](#) (1)
 - [Heat Gun](#) (1)
-

Step 1 — Open the battery chamber



- Open the battery chamber door by sliding the door to the side of the camera to release the safety catch.
- Lift the door up to open.

Step 2 — Insert the batteries



- Insert the four batteries inside of the battery chamber door.
- Make sure the positive and negative battery terminals are in the correct position.

Step 3 — Remove the viewfinder cover



- Use a screwdriver to remove the four viewfinder cover screws.

Step 4 — Remove viewfinder screws



- Remove the 2 small screws under the viewfinder.

Step 5 — Remove the screen cover



- Remove the screen cover by applying slight pressure at the top, then pulling the screen protector away from the camera.

⚠ Do not apply pressure to the surface of the LCD screen or it may be permanently damaged. If fingerprints are on the LCD monitor, gently wipe with a soft, clean, dry cloth.

Step 6 — Remove screws from the bottom panel



- Remove 6 screws on the bottom panel.

Step 7 — Remove screw from battery chamber



- Remove 1 screw on the outer side of the battery chamber.

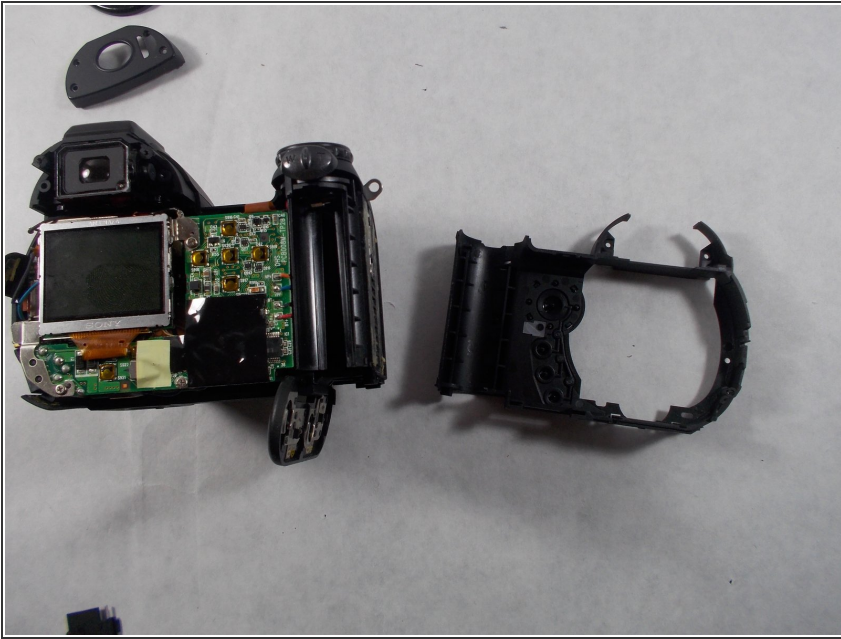
 This will be under the rubber grip.

Step 8



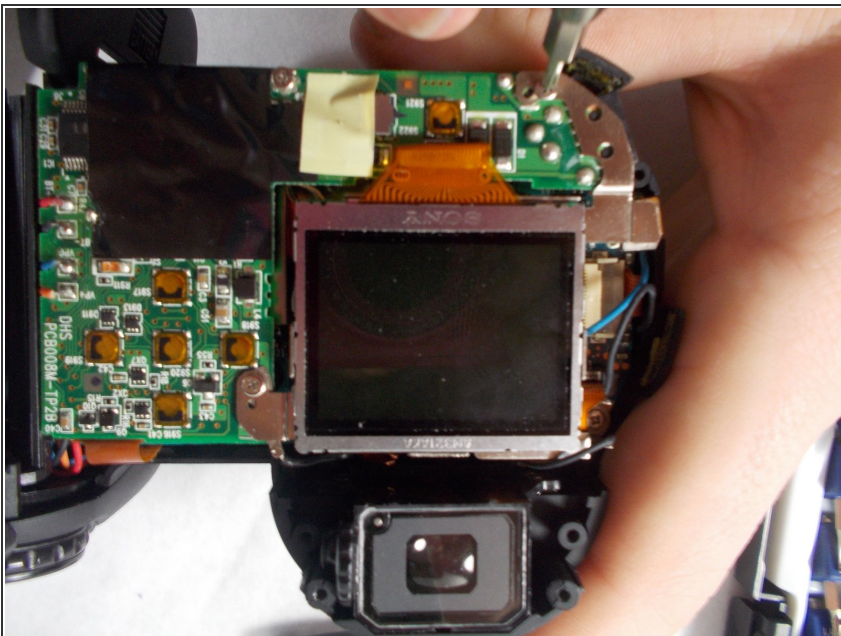
- Remove 1 screw inside the battery chamber.

Step 9



- Pull the wrist strap away from the front of the camera to remove it.
- Then carefully pull the back casing apart from the camera.

Step 10



- Remove the 3 screws that attach the LCD screen to the circuit board.

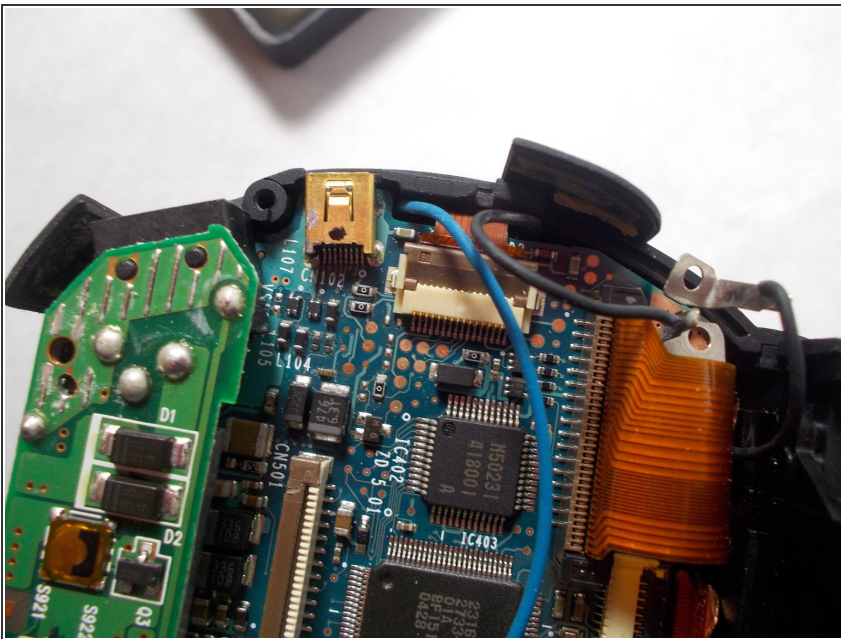
Step 11



- Gently remove the LCD screen from the circuit board.

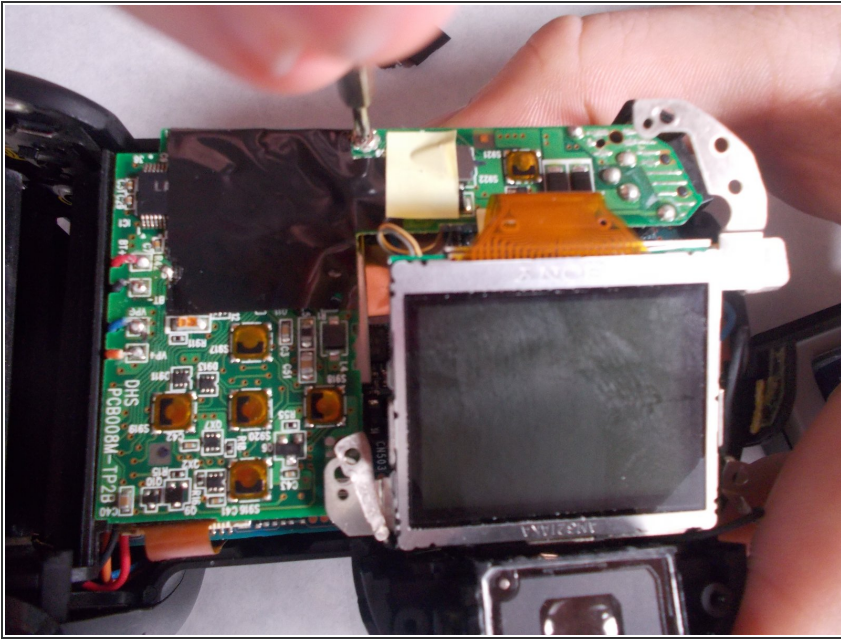
⚠ There will be a ribbon cable and some wires attached to the LCD screen.

Step 12



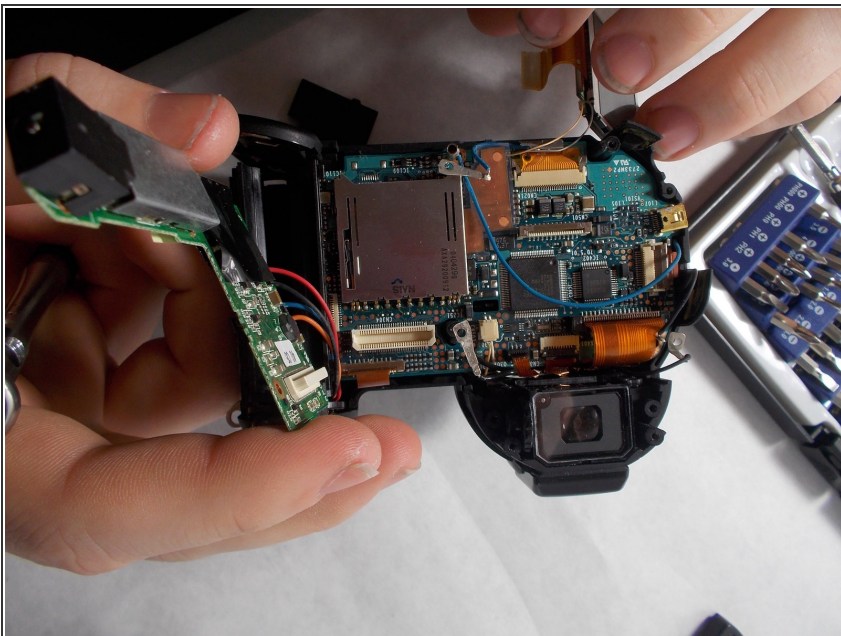
- Use tweezers to carefully pull the ribbon cable from the circuit board, not from the LCD screen.
- Peel back tape on LCD screen to reveal where the wires are attached. Use tweezers to detach the wires from the LCD screen.

Step 13 — Audio/Visual port



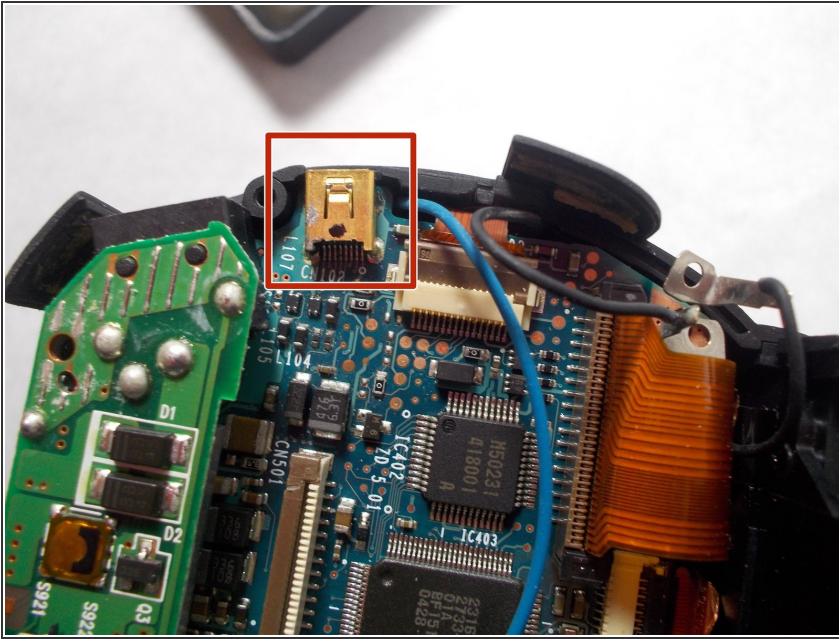
- Remove the single screw that connects the circuit board to the motherboard.

Step 14



- Carefully remove the circuit board from the motherboard.
- Leave the wires attached to the circuit board.

Step 15



- The A/V port is glued to the motherboard. Heat should be applied carefully with a heat gun to loosen the adhesive.
- Remove the A/V port with a spudger.

To reassemble the device, follow these instructions in reverse order.