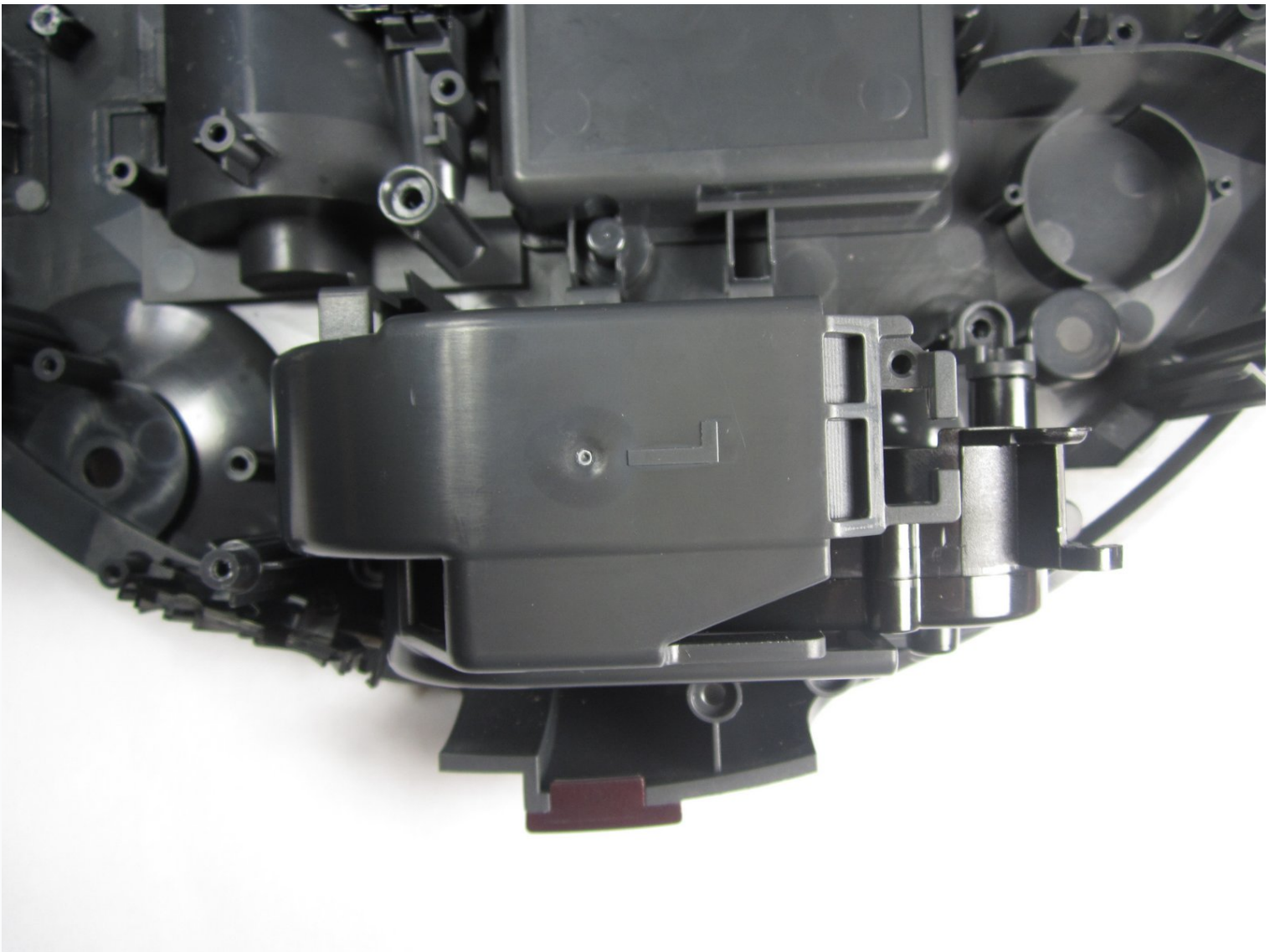




RYDIS H68 Pro Wheel Replacement

Wheels not working properly? Follow this guide...

Written By: Shawn O'Meara



INTRODUCTION

Wheels not working properly? Follow this guide for steps on how to replace the wheel system on a RYDIS H68 Pro.

TOOLS:

Tournevis cruciforme #1 (1)

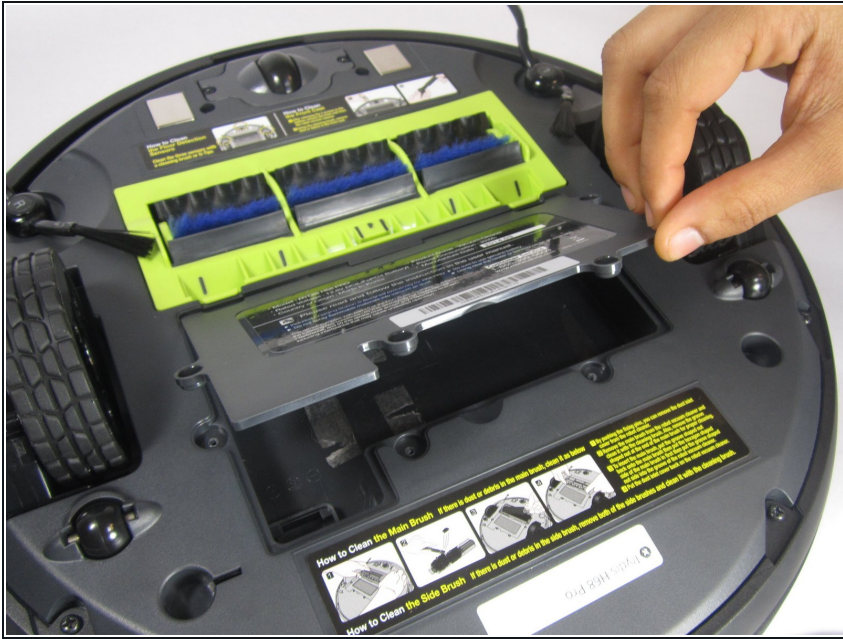
Spatule en métal (1)

Step 1 — Battery



- Flip the vacuum over so that the wheels are facing you.
- Use a Phillips #1 screwdriver to remove the four 10 mm screws that surround the battery cover.

Step 2



- Lift the battery cover up to reveal the battery.
- Remove the battery.

Step 3 — Bumper



- Remove the eight 10 mm Phillips #1 screws.

Step 4



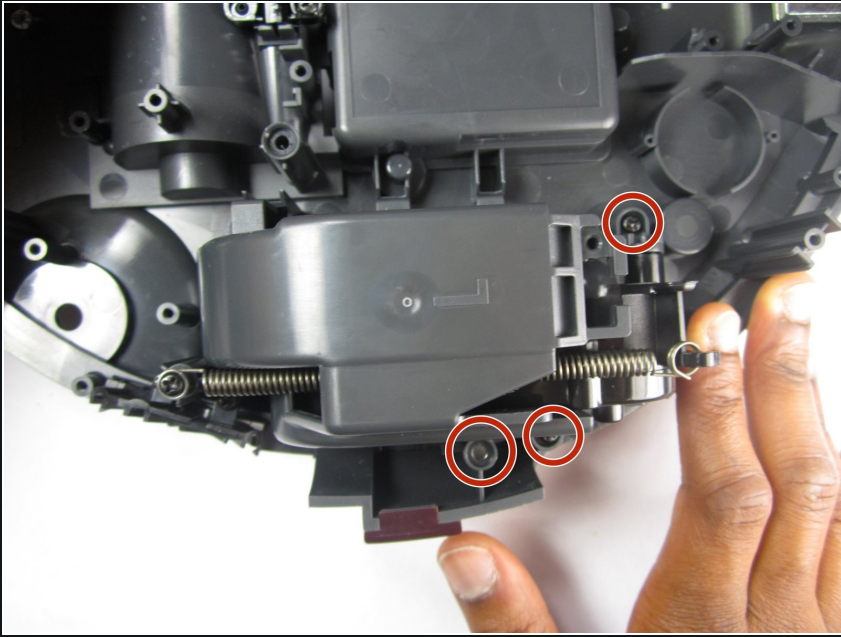
- Hold the front bumper and pull it off.
- ❗ It requires a lot of force to pull the bumper off.

Step 5



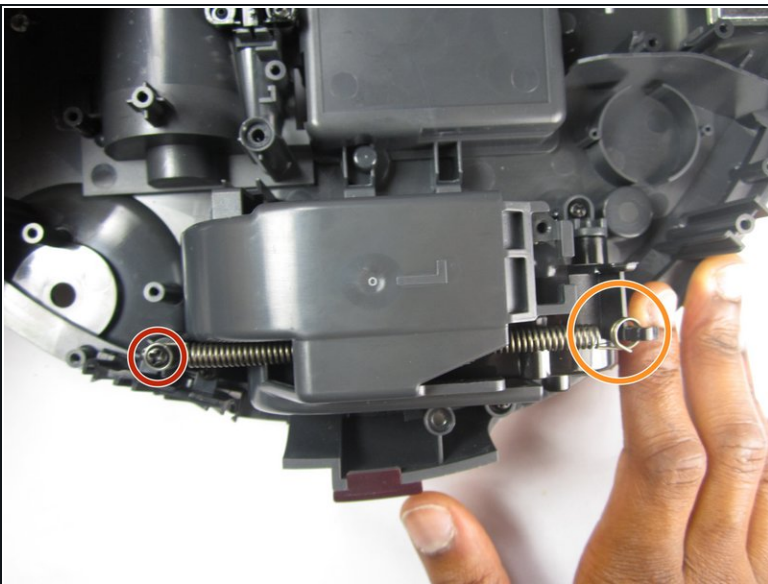
- Pry off the back bumper by going around the entire top of the bumper with the metal spudger.

Step 6 — Wheel assembly



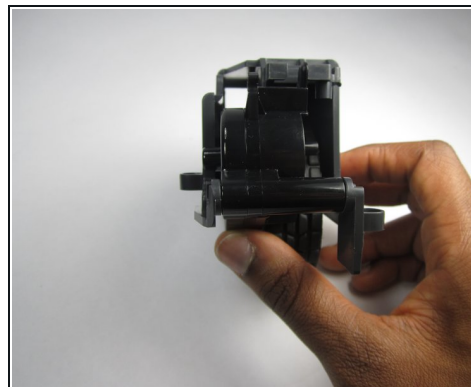
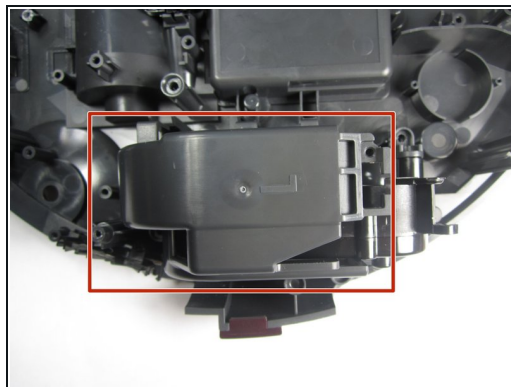
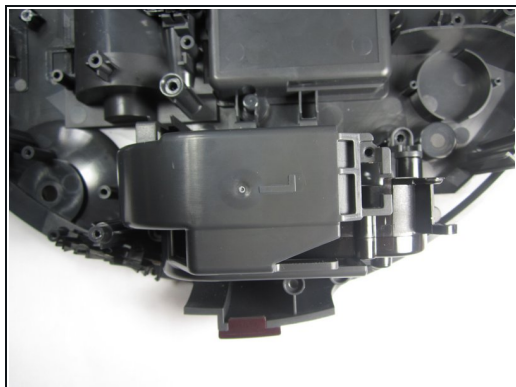
- Remove three 10mm Philips #1 screws that are securing the wheel assembly.

Step 7



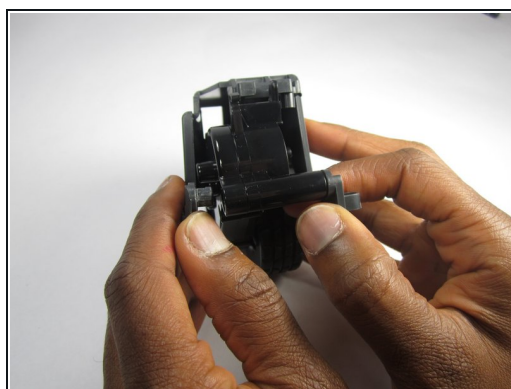
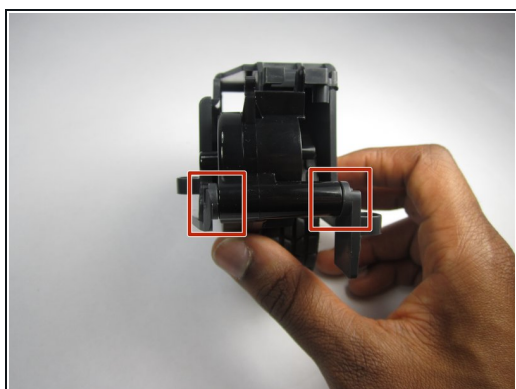
- Remove the 10mm Phillips #1 screw securing the spring.
- Then undo the spring from the plastic hook to completely remove it from the wheel assembly.

Step 8



- Lift up on the plastic piece to remove the entire wheel assembly.

Step 9



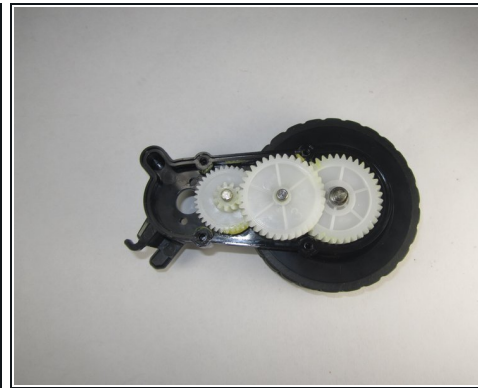
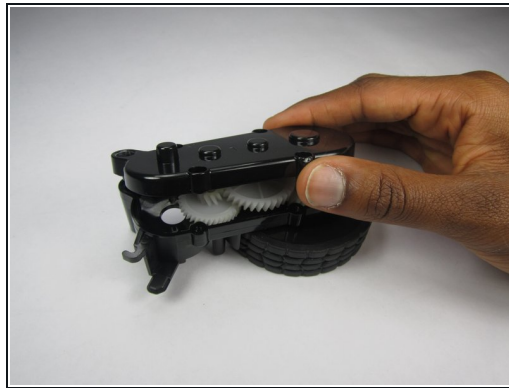
- Remove the plastic frame by pulling outward on the two spots where it is fastened.

Step 10



- Remove the four 10mm Phillips #1 screws around the edges of the cover.

Step 11



- Lift up on the top cover to remove it.
- Removing the top cover reveals the gear system consisting of three gears.

To reassemble your device, follow these instructions in reverse order.