



# Roku 4 Remote Control Motherboard Replacement

This guide will enable its reader to effectively open the Roku 4 Remote Control to access the motherboard for replacement or electrical fixes.

Written By: Hank Harrison



---

## INTRODUCTION

If there continues to be a problem after restarting and repairing the remote, you may need to replace or fix your remote's motherboard.

---

### TOOLS:

- [iFixit Opening Tools](#) (1)
  - [Phillips #0 Screwdriver](#) (1)
-

## Step 1 — Remote Control Motherboard



- Place the remote control facing down on the table, so that the buttons are facing downwards.

## Step 2



- Remove the battery compartment cover from the back of the remote by sliding it outwards. This should reveal the batteries.

### Step 3



- Remove the batteries from the battery compartment.



## Step 4



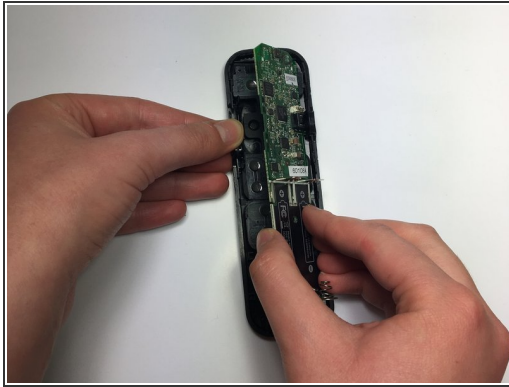
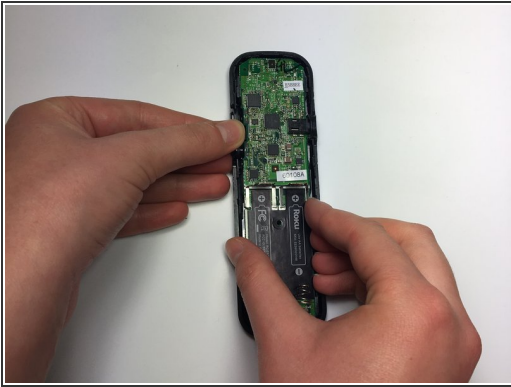
- Turn the Phillips PH0 screwdriver counterclockwise to carefully remove the 6.9 mm screw located between both battery compartments.

## Step 5



- Wedge a plastic opening tool into the seam between the top cover and bottom casing of the device to create a gap.
- ⚠ Prying open the remote is quite difficult and requires a large amount of force. Use caution to avoid breaking the device or hurting yourself.
- Once you have created a gap large enough for your fingers to fit between, separate the top cover from the bottom plastic casing by pulling them apart gently.

## Step 6



- Using your right thumb, lift up on the left side of the motherboard to remove it from the bottom plastic casing.

To reassemble your device, follow these instructions in reverse order.