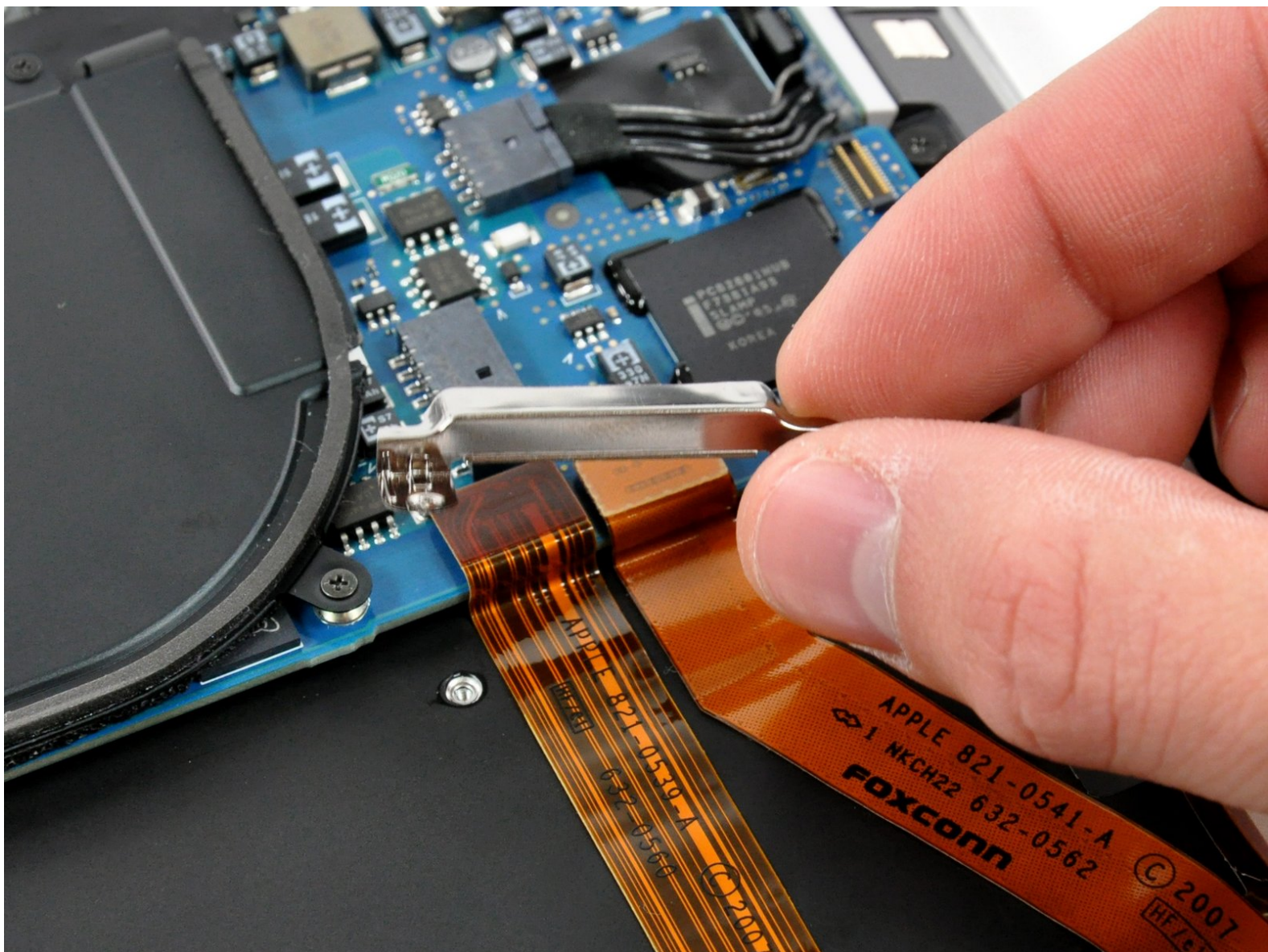




MacBook Air Models A1237 and A1304 Logic Board Bracket Replacement

Written By: Walter Galan



INTRODUCTION

The logic board bracket holds the trackpad control cable connector and the AirPort/Bluetooth connector securely to the logic board.



TOOLS:

- [Phillips #00 Screwdriver](#) (1)




PARTS:

- [MacBook Air Logic Board Bracket](#) (1)

Step 1 — Lower Case



 Unplug your MacBook Air and power it off before you proceed.

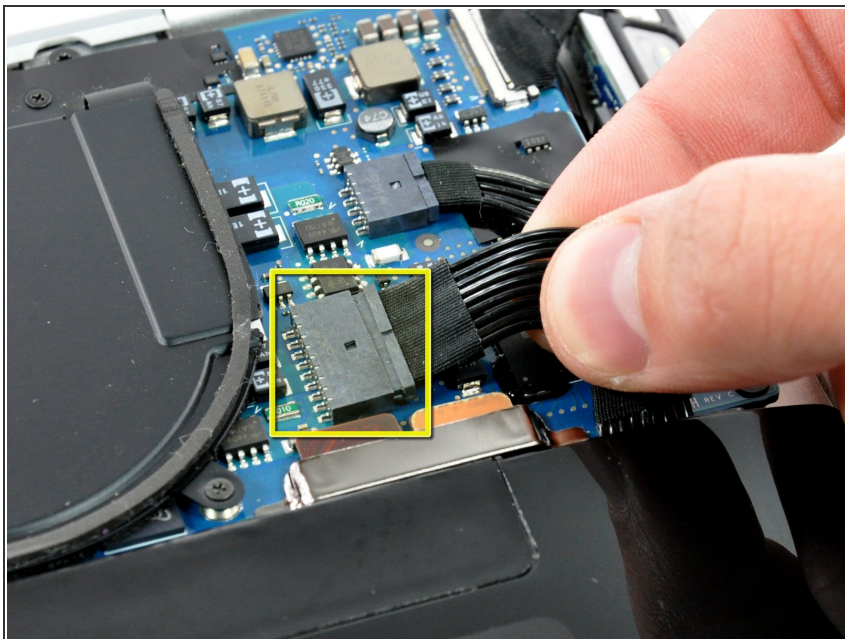
- Remove ten Phillips screws securing the lower case to the MacBook Air:
 - Six 2.8 mm screws
 - Two 3.8 mm screws
 - Two 5.4 mm screws

Step 2



- Slightly lift the lower case near the vents and push it toward the rear of the computer to free the mounting tabs.

Step 3 — Battery



- Disconnect the battery connector by pulling it straight out of its socket.

Step 4



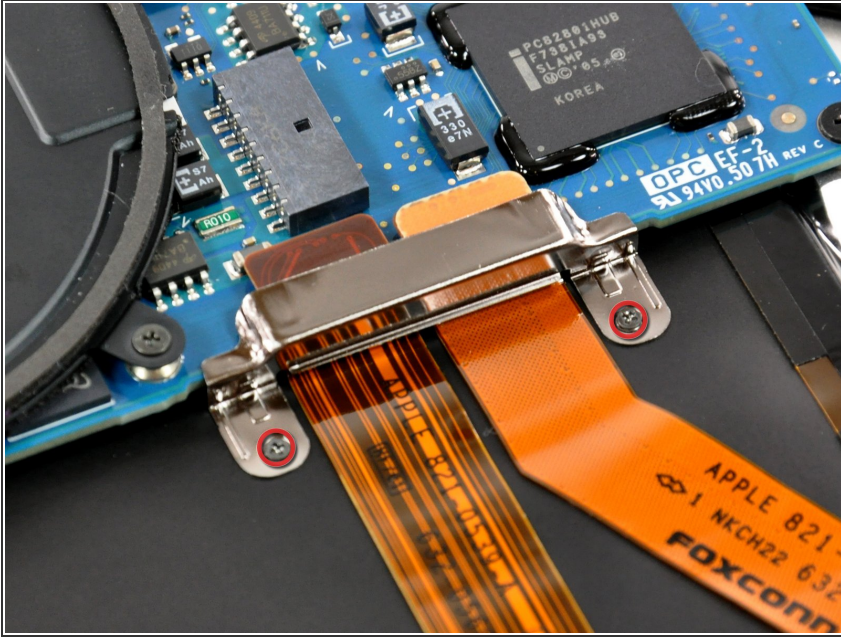
- Remove the following nine screws securing the battery to the Air:
 - Four 2.9 mm Phillips.
 - Four 3.8 mm Phillips.
 - One 7.2 mm Phillips.

Step 5



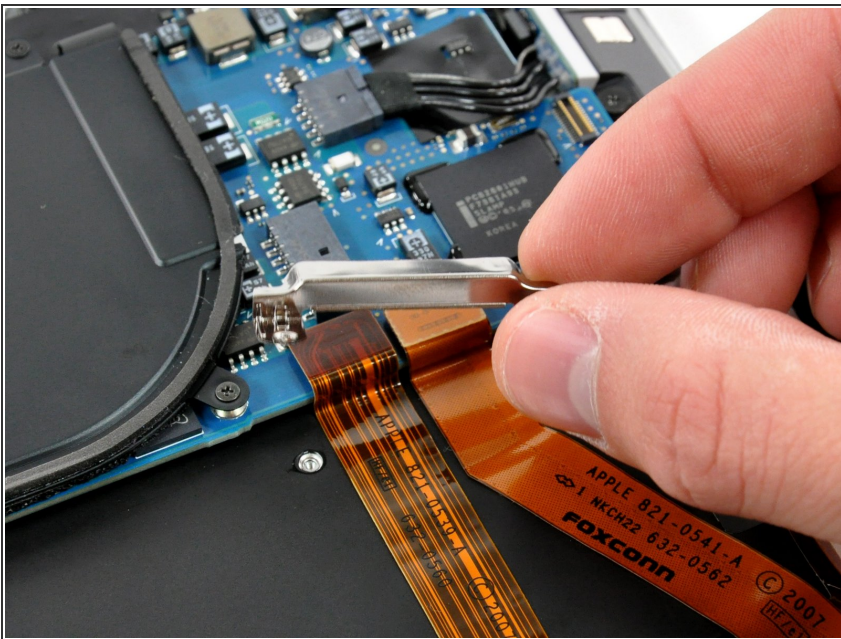
- Lift the battery out of the Air.
- ☑ If you're installing a new battery, you should [calibrate](#) it after installation:
 - Charge it to 100%, and then keep charging it for at least 2 more hours. Then, unplug and use it normally to drain the battery. When you see the low battery warning, save your work, and keep your laptop on until it goes to sleep due to low battery. Wait at least 5 hours, then charge your laptop uninterrupted to 100%.
 - If you notice any unusual behavior or problems after installing your new battery, you may need to [reset your MacBook's SMC](#).

Step 6 — Logic Board Bracket



- Remove the two small Phillips screws securing the logic board bracket to the upper case.

Step 7



- Lift the logic board bracket out of the upper case.

To reassemble your device, follow these instructions in reverse order.