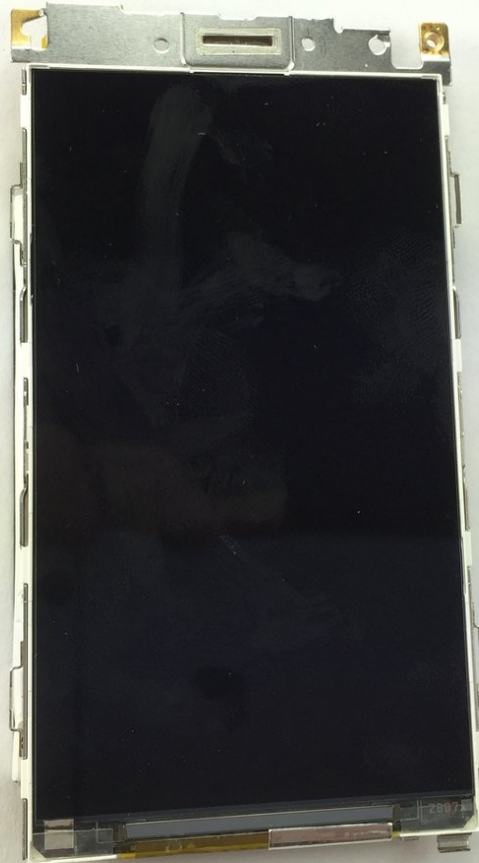




Sony Xperia Sola Touch Screen Replacement

If the Sony Xperia Sola does not know you are touching it when you are pressing the screen, this guide will show you how to replace the touch screen.

Written By: Bo Wu



INTRODUCTION

If the Sony Xperia Sola does not know you are touching it when you are pressing the screen, this guide will show you how to replace the touch screen.



TOOLS:

- [64 Bit Driver Kit](#) (1)
 - [Spudger](#) (1)
 - [Tweezers](#) (1)
-

Step 1 — Touch Screen



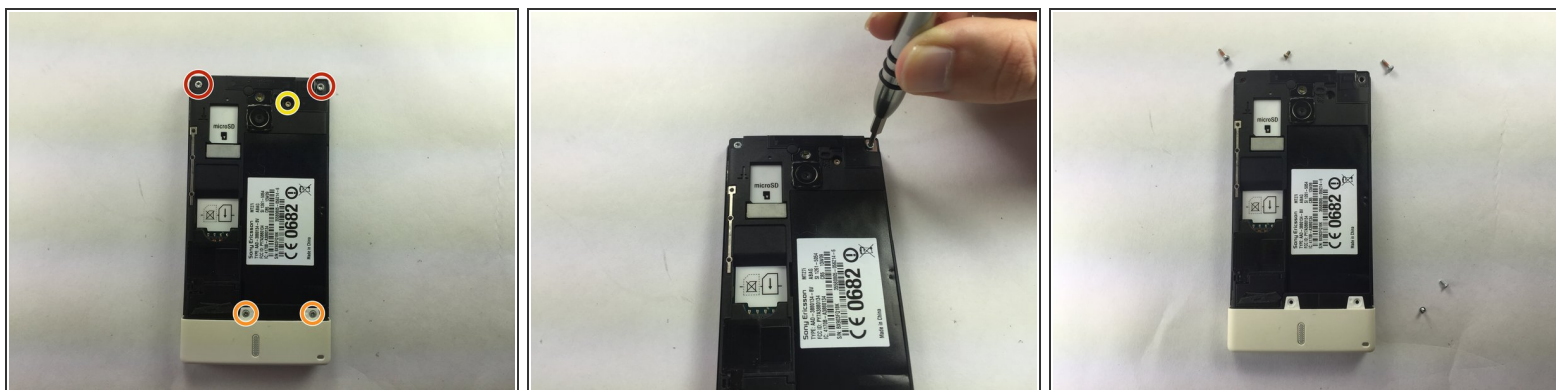
- Lay the phone as shown and put the camera facing up.

Step 2



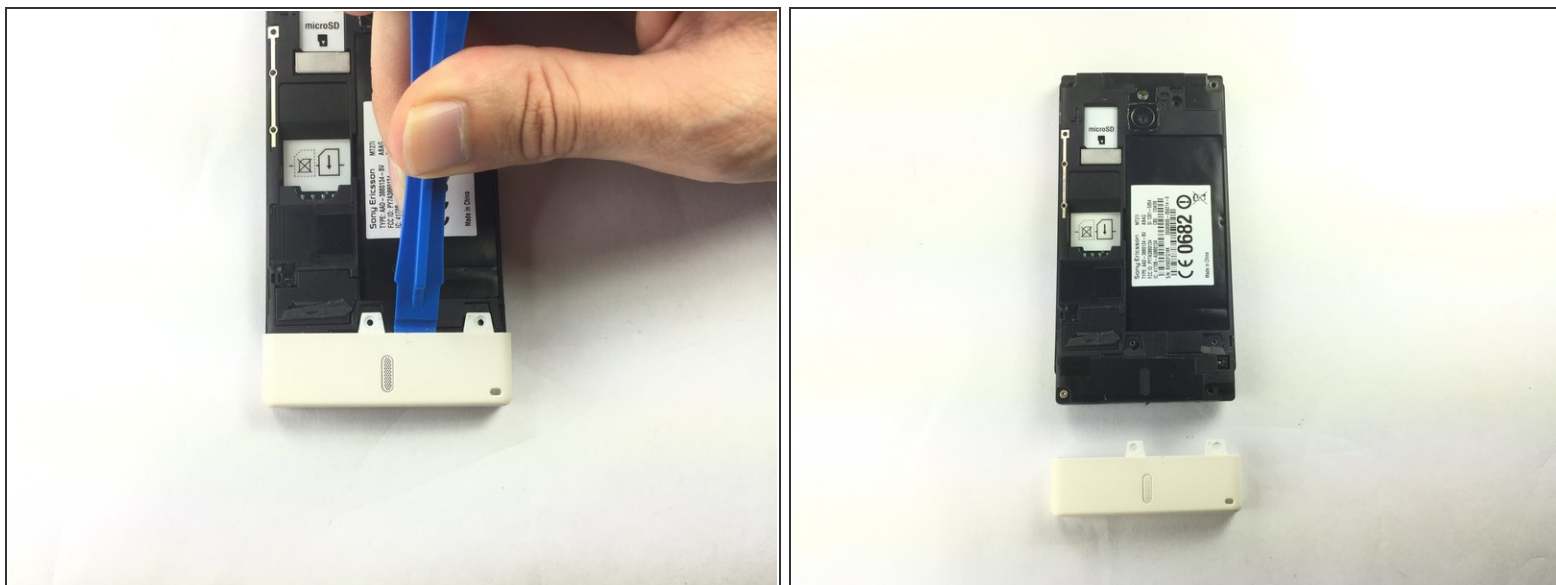
- Push the back cover as shown, then lift the cover off.

Step 3



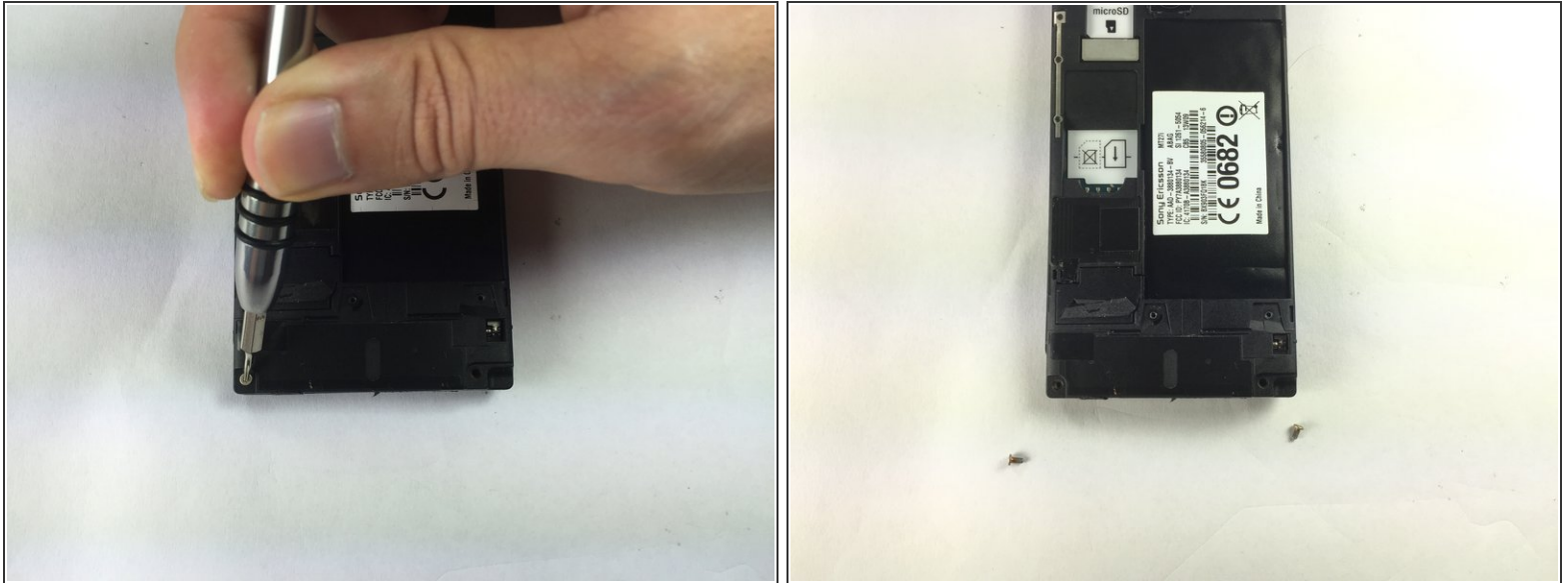
- Remove the five screws as shown on the phone by using 26 Bit Kit.
- Use a T6 screwdriver bit to remove top two screws.
- Use a J000 screwdriver bit to remove the bottom two screws.
- Use a T3 screwdriver bit to remove the middle screw (close to camera).

Step 4



- Use plastic opening tool to remove the bottom white cover as shown.

Step 5



- There are two additional screws under the bottom white cover as shown.
- Use T3 drivers to remove two additional screws as shown.

Step 6



- Using plastic opening tool, lift to remove the small black cover on the bottom left of phone as shown.
- Then, using tweezers to lift the connector straight up to disconnect the battery's circuit as shown.

Step 7



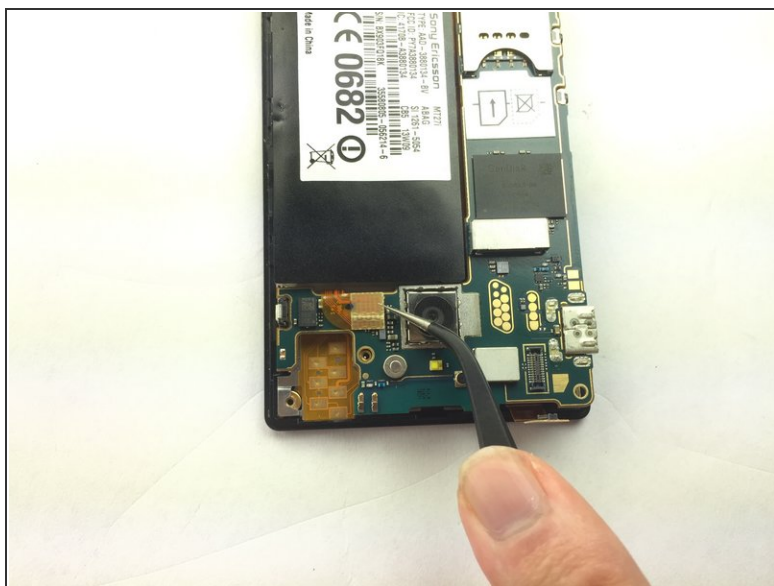
- Turn the phone onto its side and insert a flat object and gently remove cover, using plastic opening tool as shown.

Step 8



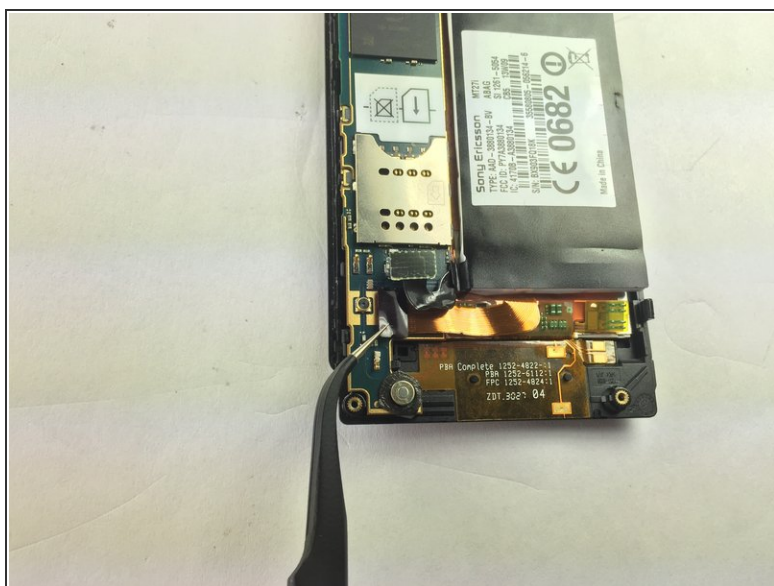
- Lay the phone down as shown. Then use tweezers to pull additional power circuit up gently to remove it as shown.

Step 9



- Repeat the last step as shown to remove additional power circuit which is on the top of the battery.

Step 10



- After removing all connectors, Use the plastic opening tool to slide it under the top left of the board then lift the board straight up.

Step 11



- Separate the screen from the touch screen sensor, use the spudger to do this job.
- The left piece is the plastic screen.
- The right piece is the touch screen sensor that you are looking to replace.

Step 12



- Flip the touch screen sensor over and remove the battery from the back of it.
- ⓘ The battery might be glued on so some force might be needed.

To reassemble your device, follow these instructions in reverse order.