



Sony Cyber-shot DSC-P100 Camera Lens Replacement

Written By: Katie McCraw





TOOLS:

- [Heavy-Duty Spudger](#) (1)
 - [Tweezers](#) (1)
 - [Phillips #00 Screwdriver](#) (1)
-

Step 1 — Front Casing



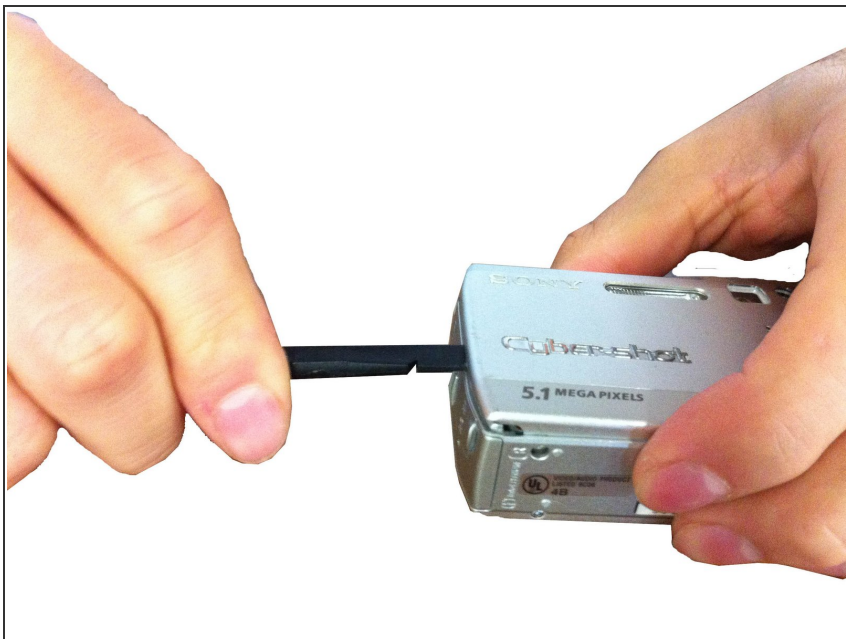
- First locate the appropriate screws for detachment.

Step 2



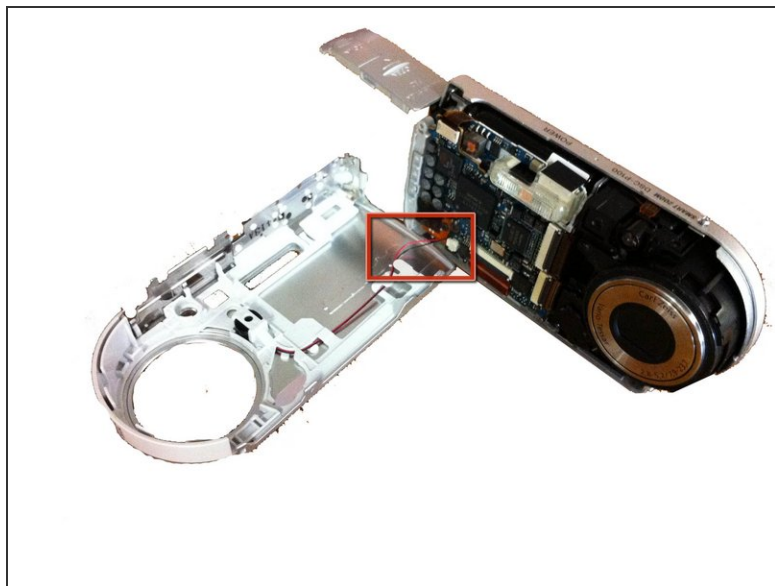
- Remove the five screws shown using a Phillips #00 Screwdriver.
- ⓘ It is important to put the small screws in a safe location in order to reassemble the casing.

Step 3



- Using a spudger, carefully pry open the front casing.

Step 4



- Carefully separate the front casing from the camera body.

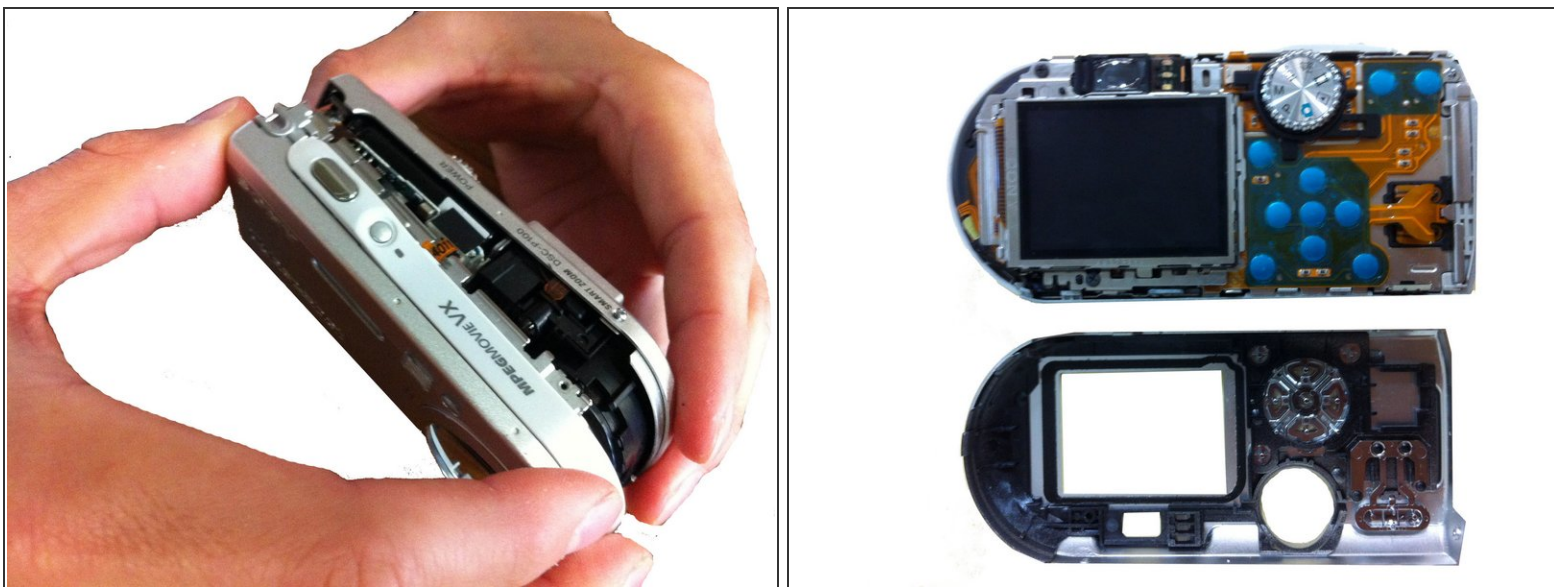
⚠ CAUTION: Be careful not to break the wire connecting the front casing and the camera.

Step 5 — Back Casing



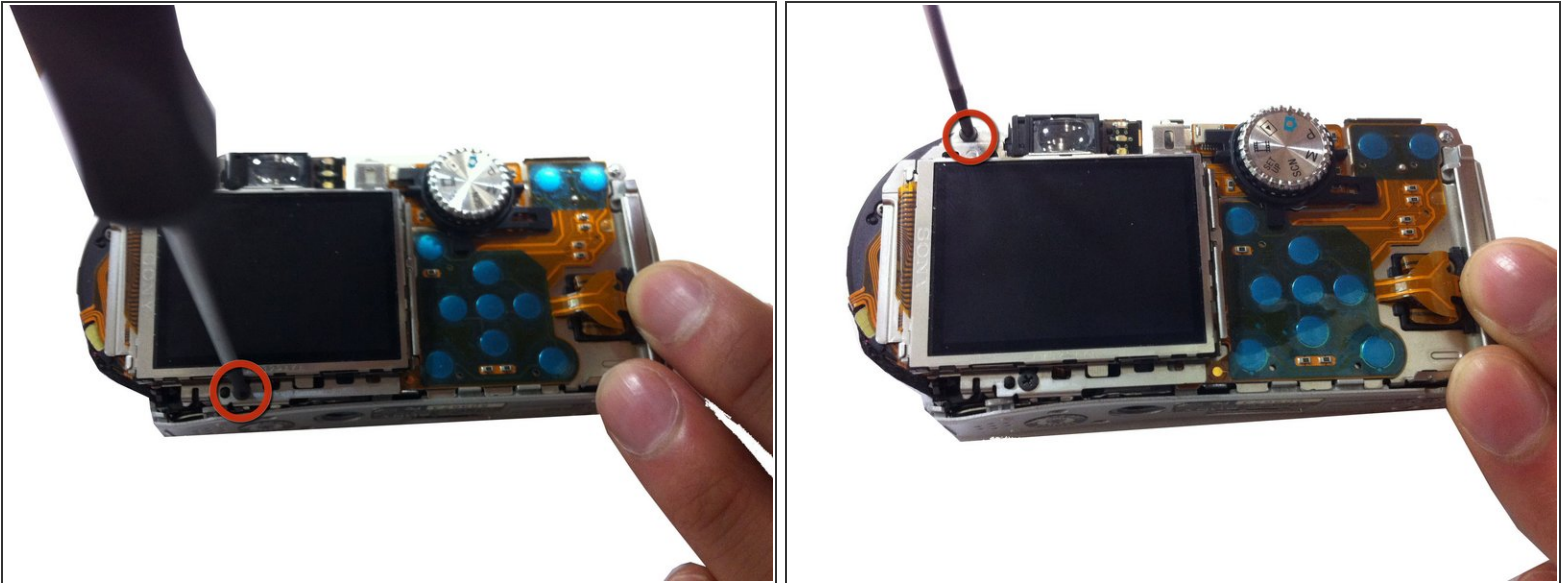
- Remove the four screws from the casing.

Step 6



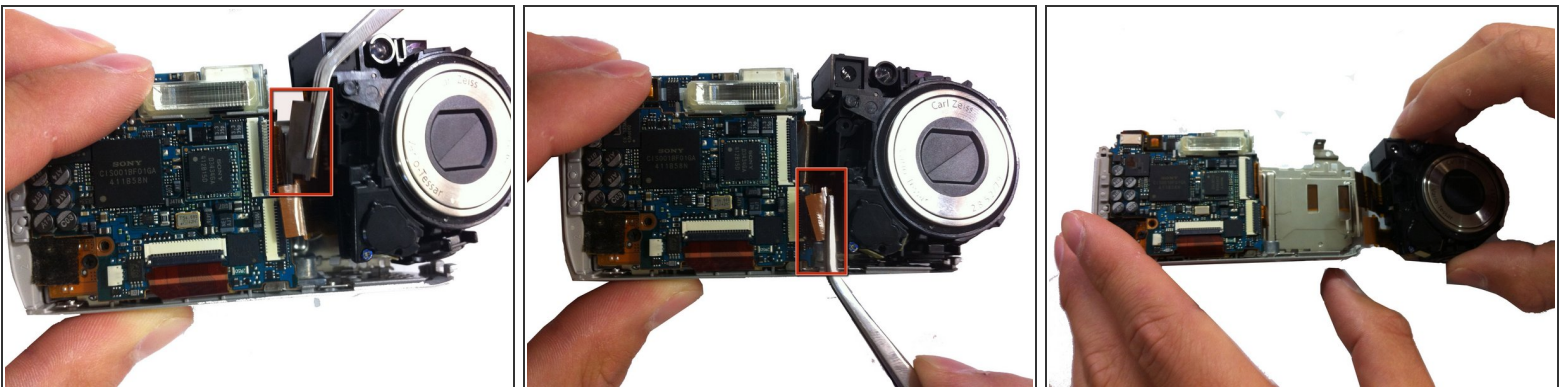
- Carefully pull the back casing away from the camera.

Step 7 — Camera Lens



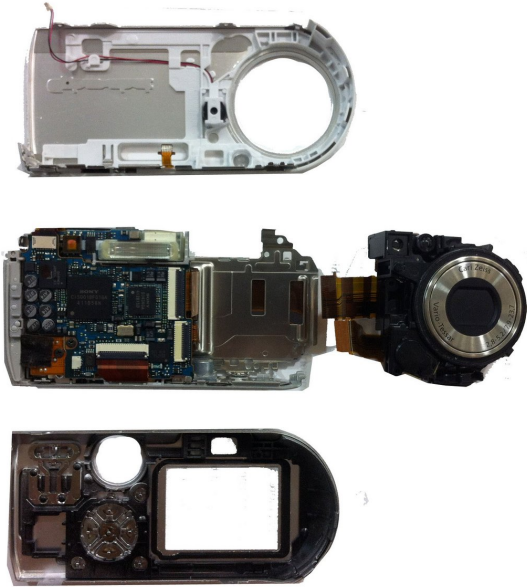
- Remove the two screws on the back side of the camera surrounding the LCD screen.

Step 8



- Remove the two ribbon traces found on the left side of the lens on the front of camera holding the lens in place.
- Carefully pull the lens away front the camera until it is released.

Step 9



- The lens is now successfully removed from the camera.

To reassemble your device, follow these instructions in reverse order.