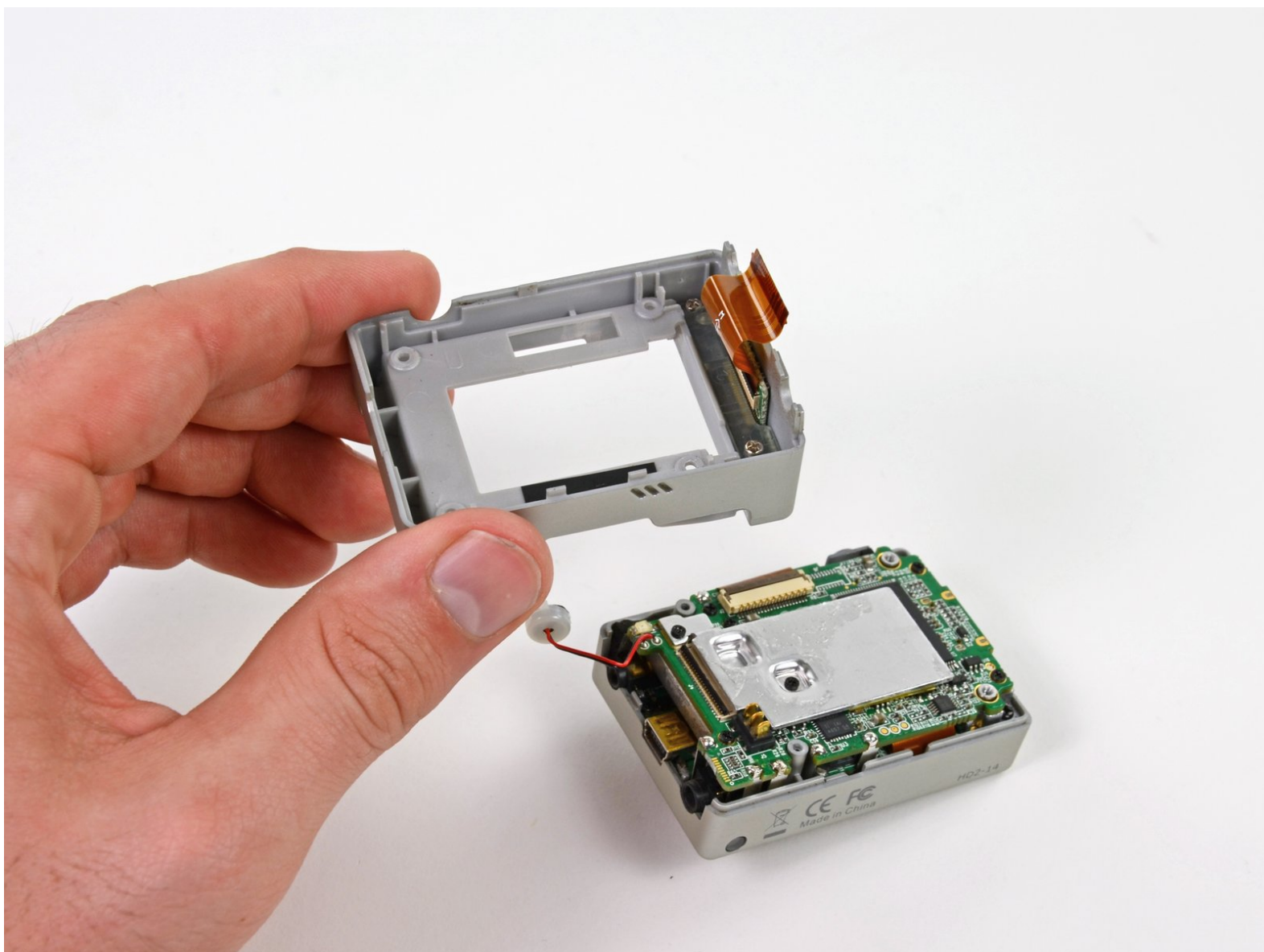




GoPro HD Hero2 Rear Case Replacement

GoPro HD Hero2 rear case prerequisite.

Written By: David Hodson



INTRODUCTION

This guide is a prerequisite for removing the mini HDMI port or replacing the rear case.



TOOLS:

- [Tweezers](#) (1)
 - [Phillips #00 Screwdriver](#) (1)
 - [iFixit Opening Tools](#) (1)
 - [Spudger](#) (1)
-

Step 1 — Rear Case



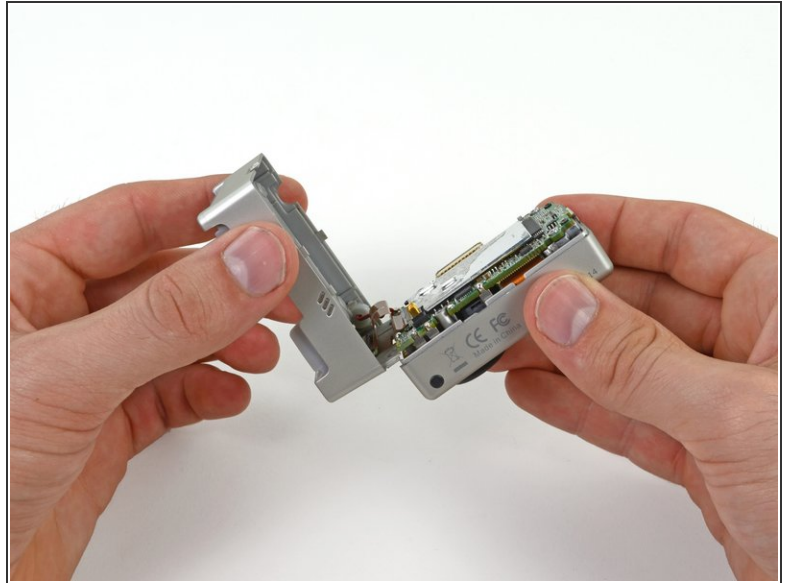
- Remove the four Phillips #00 screws securing the rear case to the rest of the device:
 - Two 5.5 mm coarse thread screws.
 - Two 4.4 mm fine thread screws.

Step 2




- Slide the edge of a plastic opening tool underneath the sticker on the rear cover and gently peel the sticker up.
- Once you have enough of the sticker peeled up with the plastic opening tool, grab an edge of it with your fingers and pull it off completely.

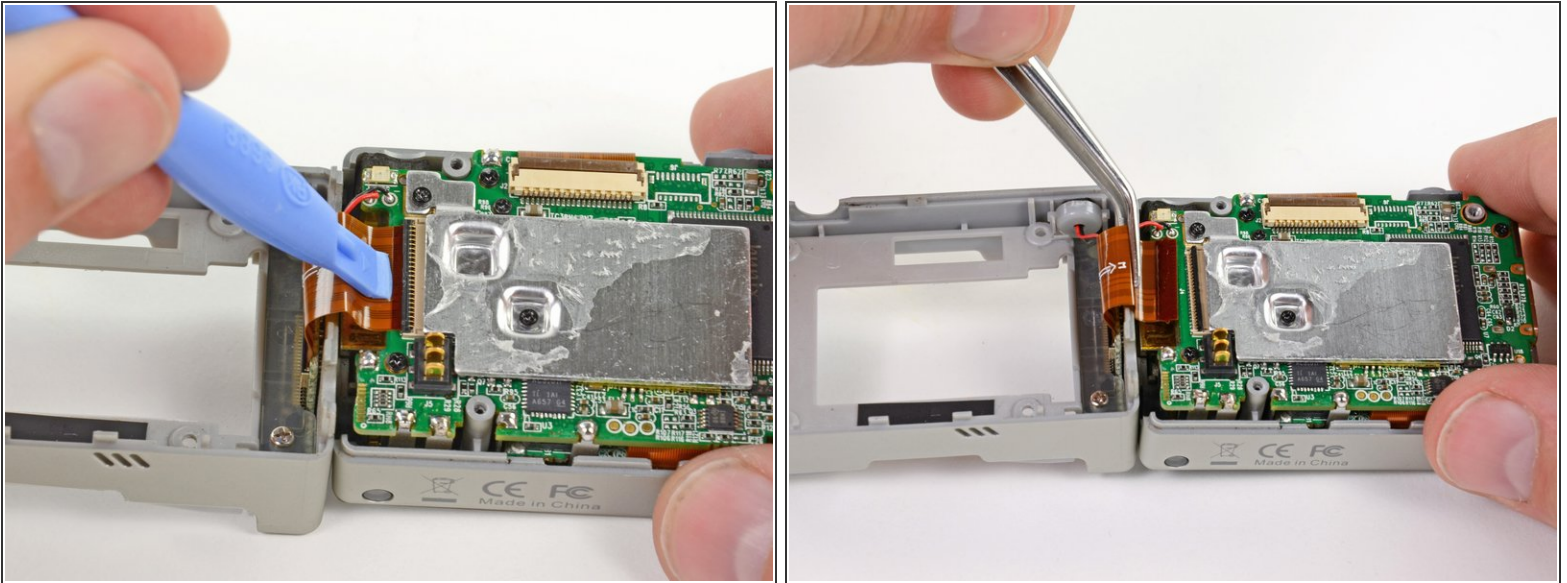
Step 3




- Grasp the rear case and lift it off of the front case.

 Do not try to completely remove the rear case yet, as it is still attached by the display port ribbon cable.

Step 4



- Using a plastic opening tool or your fingernail, flip up the locking tab on the SD board ribbon cable ZIF connector on the motherboard assembly.
 Be careful that you are prying on the locking tab, and not the connector itself.
- Use a pair of tweezers to remove the SD board ribbon cable from its connector on the motherboard.

Step 5



- Lift the speaker out of the rear case with the tip of a spudger.
- Remove the rear case.

To reassemble your device, follow these instructions in reverse order.