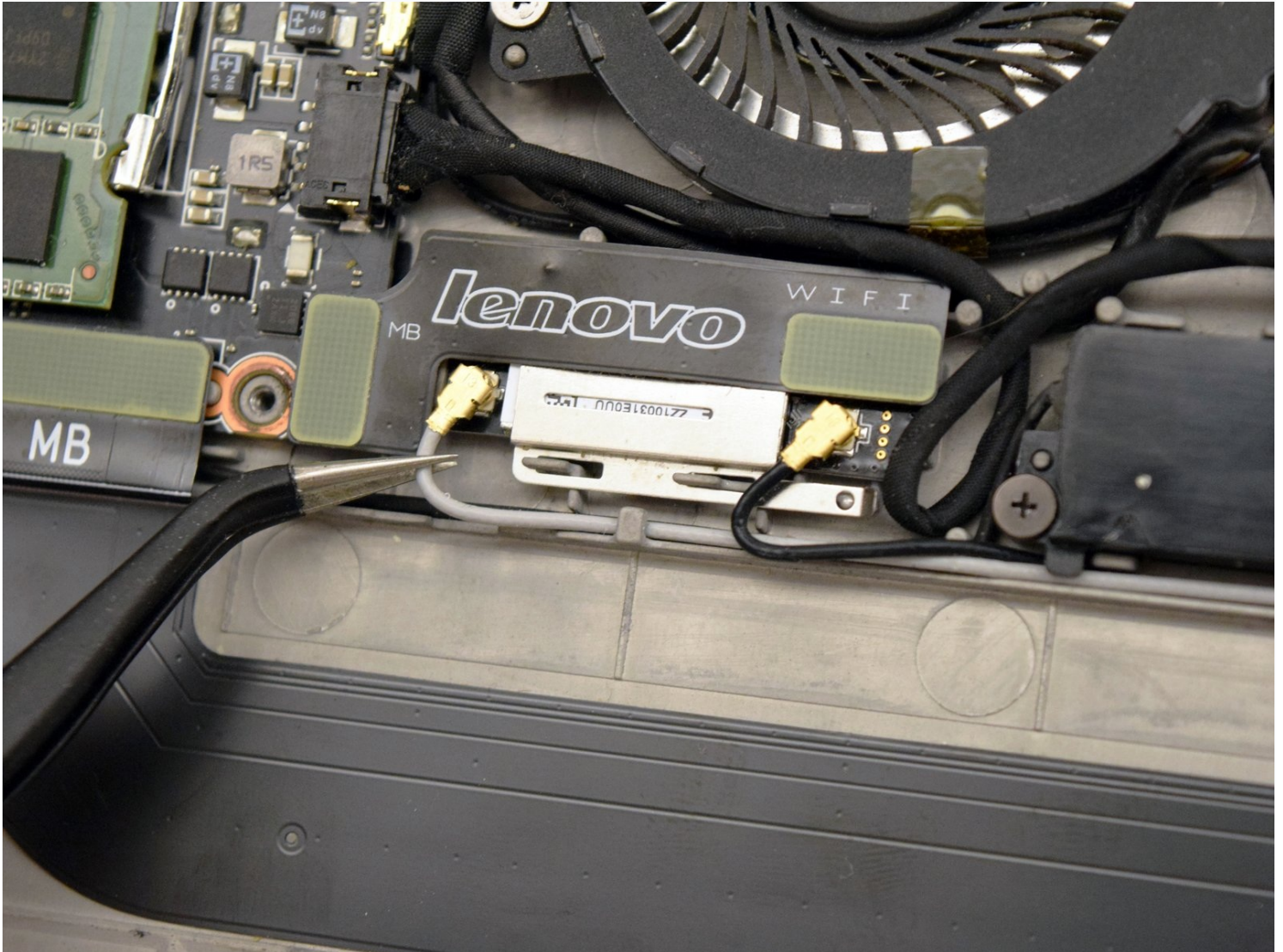




Lenovo IdeaPad Yoga 13 WiFi Module Replacement

The WiFi module is the primary method for...

Written By: Jonathan Bratton



INTRODUCTION

The WiFi module is the primary method for wireless network connectivity. If this module shows symptoms of malfunction, a USB-to-Ethernet cable adapter can be used to maintain network access until the module is replaced.

TOOLS:

[iFixit Opening Tool](#) (1)

[Tweezers](#) (1)

[Phillips #0 Screwdriver](#) (1)

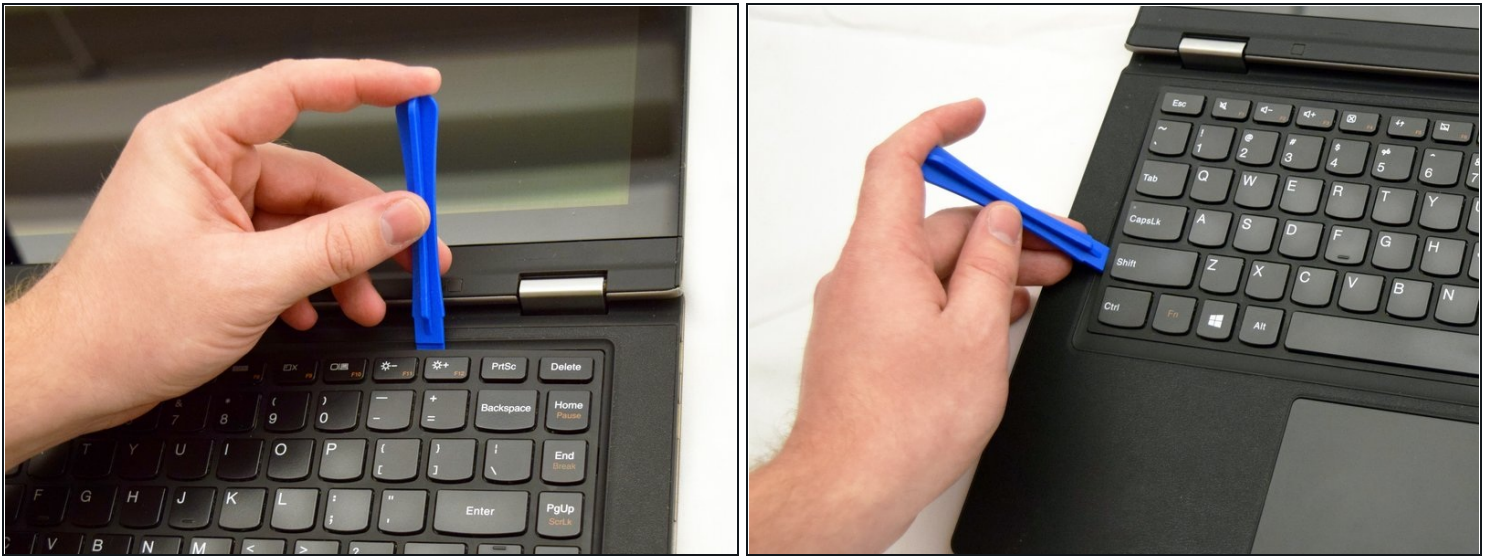
[Metal Spudger](#) (1)

Step 1 — Keyboard



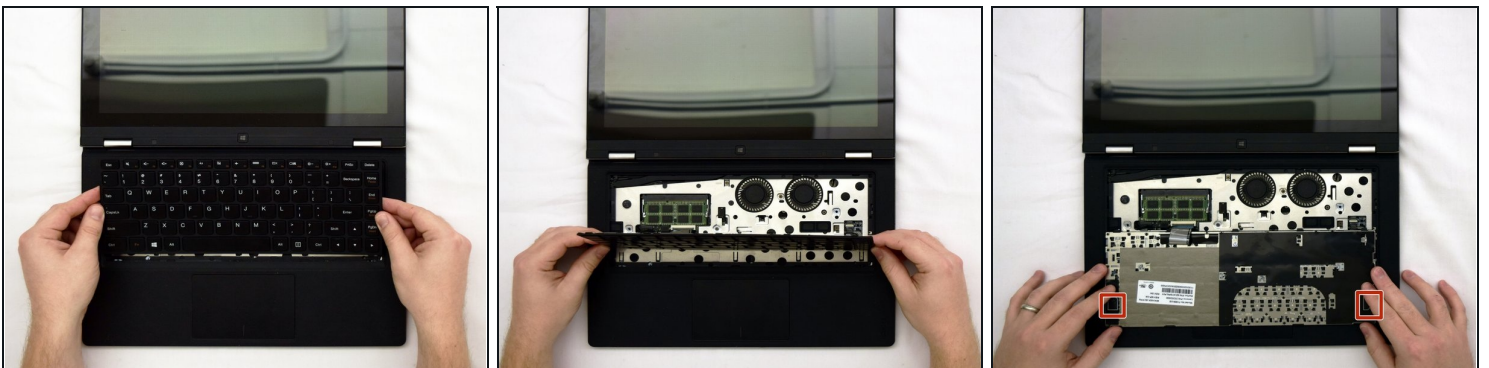
- ① Power off your laptop before beginning disassembly.
- Open the laptop to locate the keyboard.

Step 2



- Insert a plastic opening tool in the seam between the keyboard and laptop body.
- Carefully run the tool around the top and sides of the keyboard to pop out the 9 tabs holding in the keyboard.

Step 3

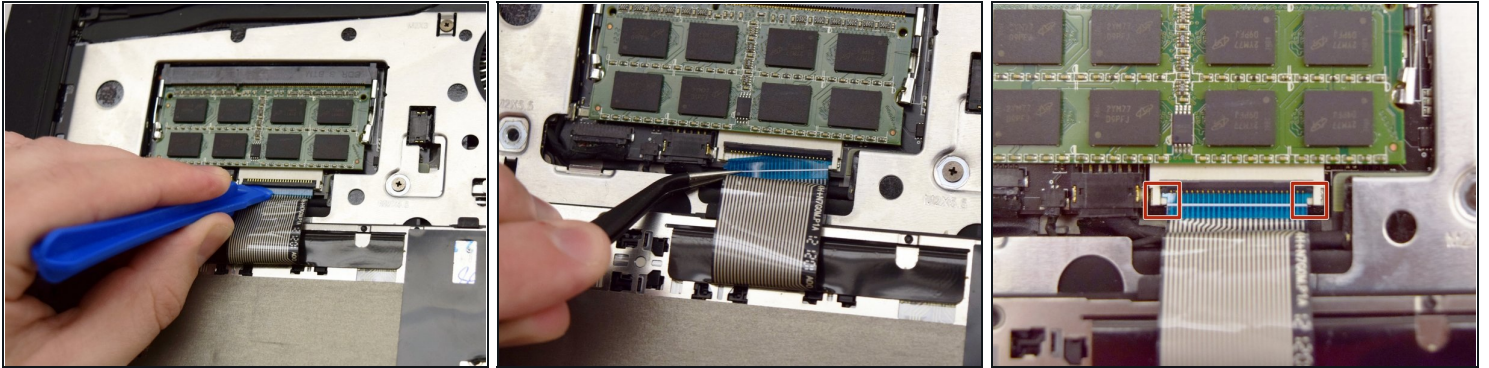


- Lift the keyboard up, then pivot it towards you to lay it facedown on the trackpad and palm rests.

⚠ Be careful when lifting the keyboard up. The ribbon cable connecting it to the motherboard is very short, and the connector is fragile.

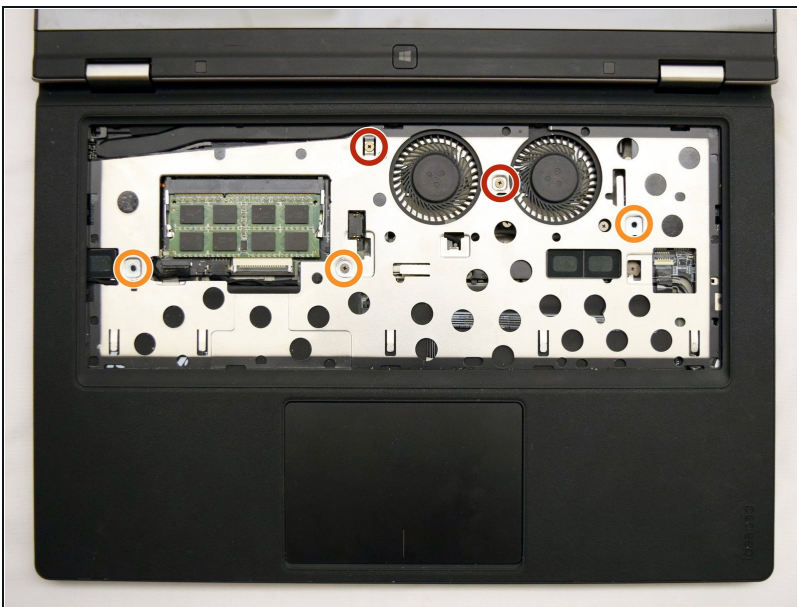
⚠ The top corners of the keyboard may be stuck to the laptop bezel with double sided tape. See rectangles in Image 3. Be careful as you lift the keyboard up and pivot it toward you.

Step 4



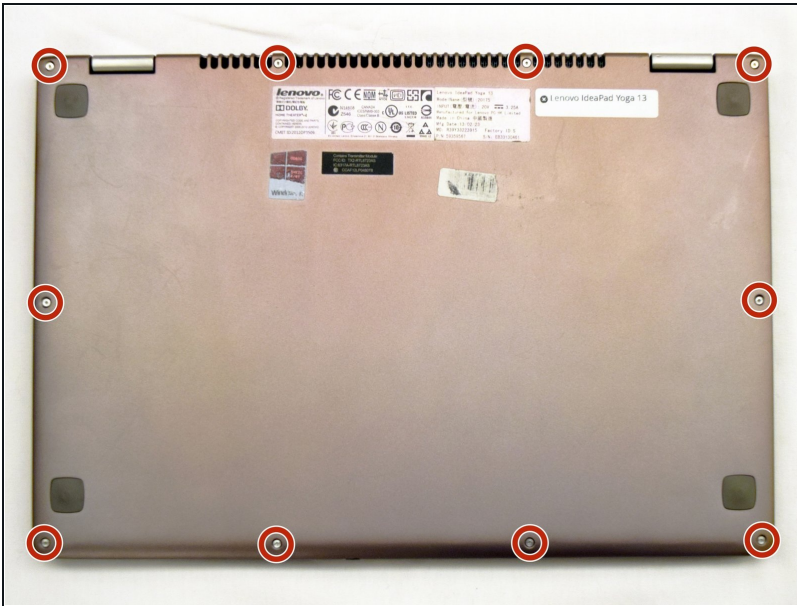
- Locate the ribbon cable connecting the keyboard to the motherboard.
- Use the tip of the opening tool to lift the black flap on the connector.
- With the tweezers, gently lift the ribbon cable out of the connector.
- ☑ Be careful when reinserting the ribbon cable.
 - Ensure the cutouts on the end of the cable match the tabs on the connector.

Step 5 — Keyboard Bezel



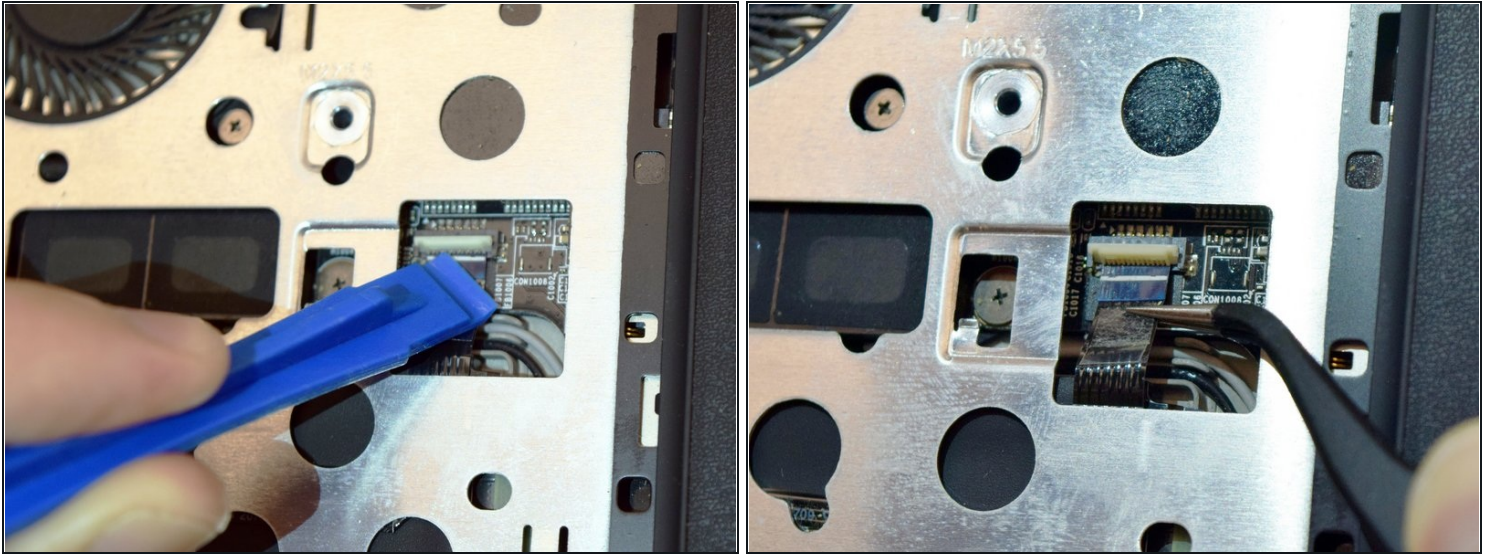
- Locate and remove the screws holding the bezel to the laptop body:
 - Two 3 mm Phillips screws
 - Three 5.5 mm Phillips screws

Step 6



- Flip the laptop over.
- Locate and remove the screws holding the bezel to the bottom panel:
 - Ten 4.5 mm Phillips screws

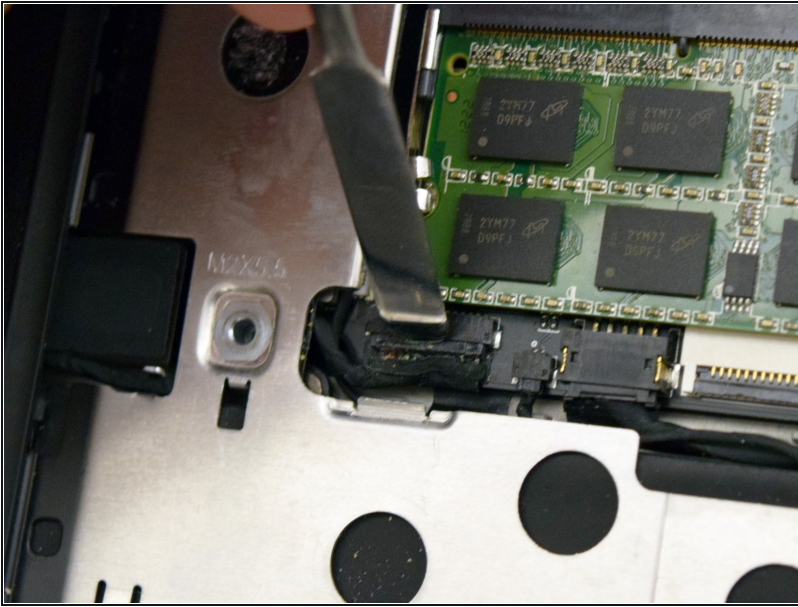
Step 7



⚠ There is now nothing securing the bezel to the laptop body. However, there are still two cables connecting the bezel to the mainboard. Ensure the bezel remains in place until the cables are disconnected.

- Flip the laptop back over.
- Locate the small trackpad ribbon cable and use the opening tool to lift the black flap on the connector.
- With [tweezers](#), gently pull the ribbon cable out of the connector.
 - ① You can use the clear plastic tab on the top of the ribbon connector to help pull the cable out.

Step 8

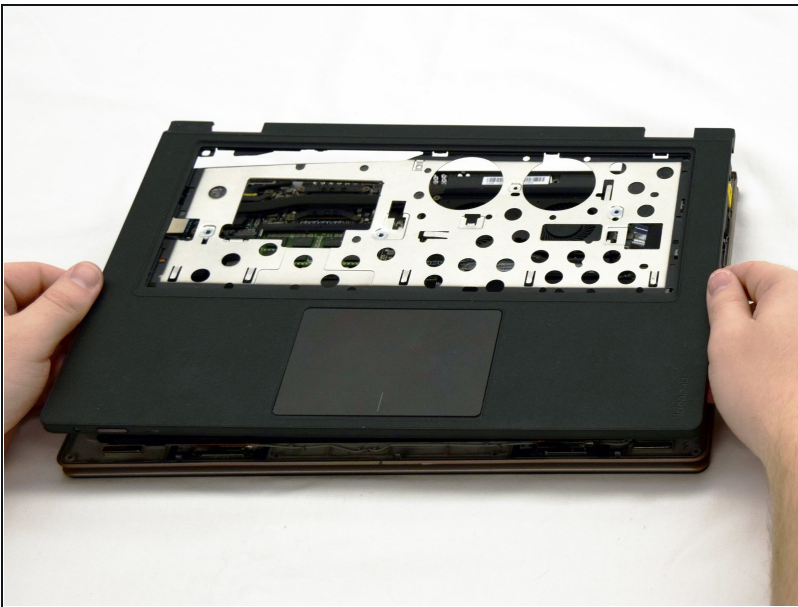


- Locate the power board cable and disconnect it by pulling the cable head towards the front of the laptop.

① You can use a metal spudger to push the head out of the socket.

⚠ Be careful to not damage the socket.

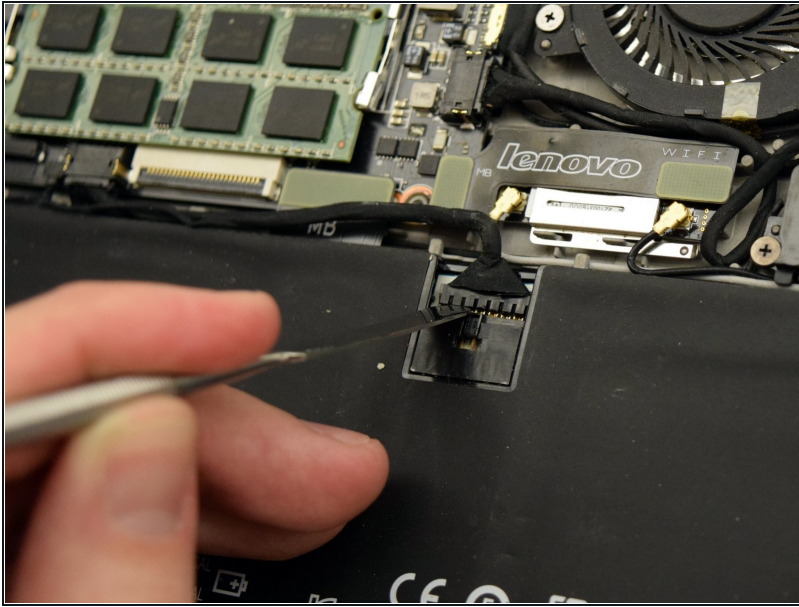
Step 9



- Lift the keyboard bezel off the laptop. The bezel is secured to the chassis by 10 plastic clips around the circumference that can be released with the plastic pry tool.

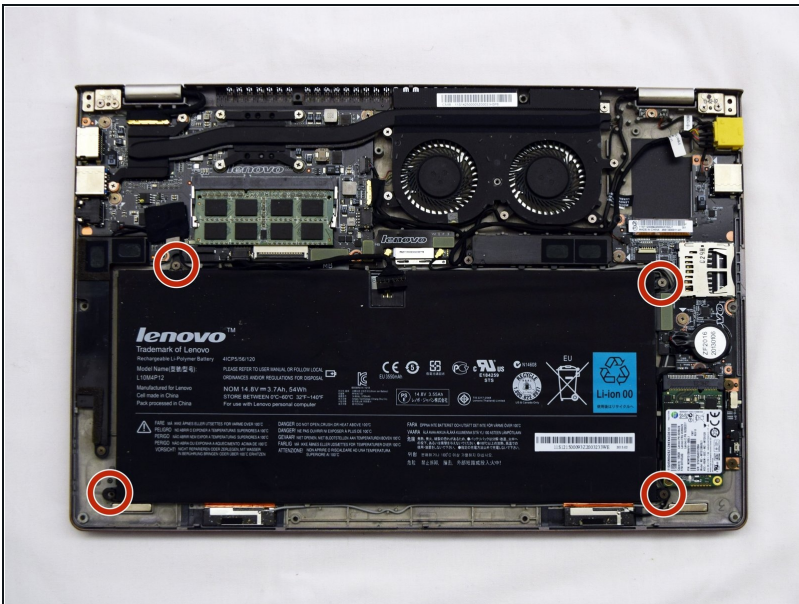
① You may need to flip the screen around to get the necessary clearance at the hinges.

Step 10 — Battery



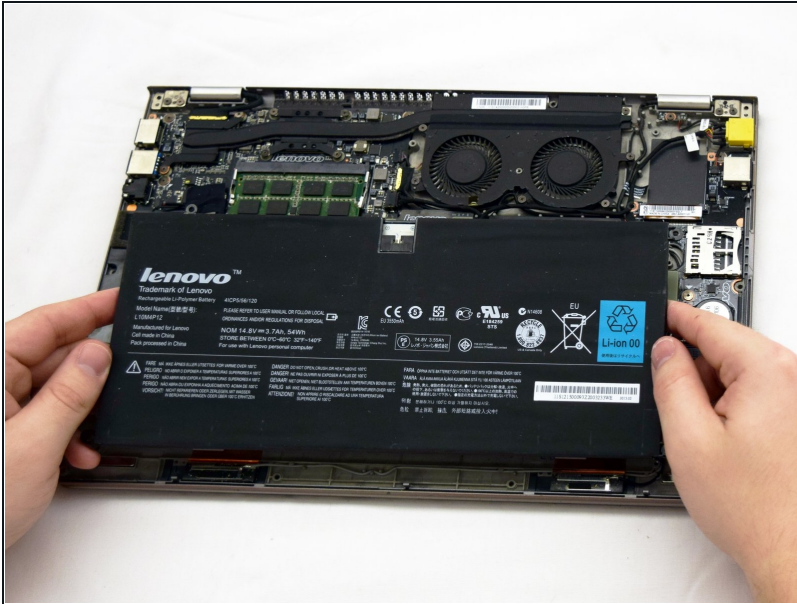
- Unplug the battery cable.
 - ① You can use a metal spudger to push the head out of the socket.

Step 11



- Remove the screws holding the battery to the chassis:
 - Four 4 mm Philips screws

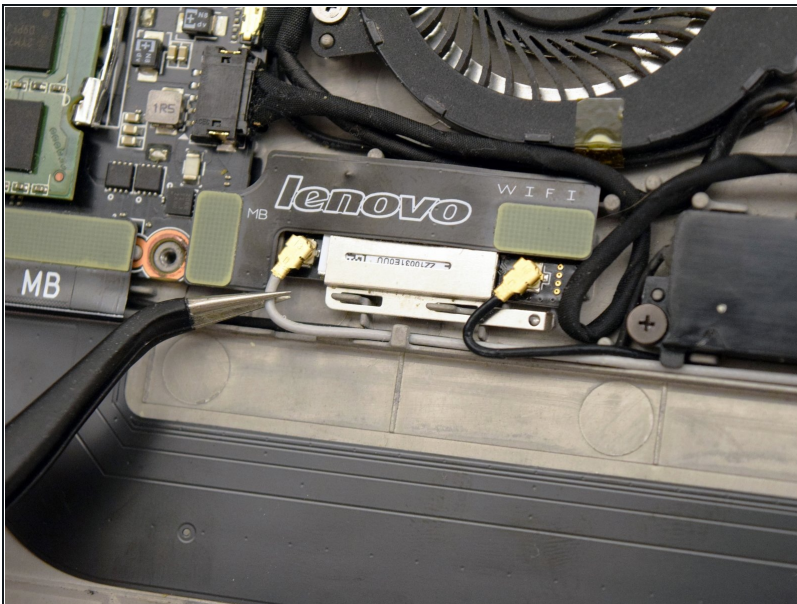
Step 12



- Gently lift the battery out of the laptop.

⚠ Handle the battery carefully. Do not allow it to bend or be punctured.

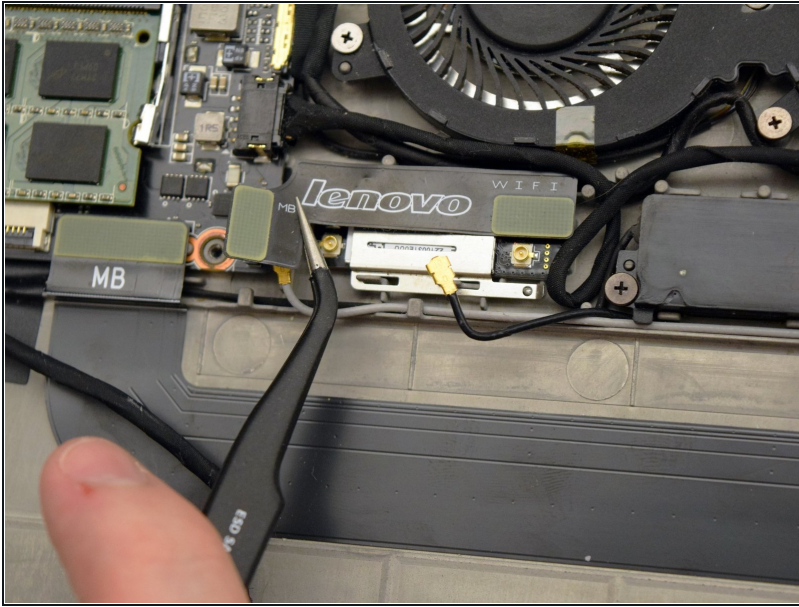
Step 13 — WiFi Module



- Using the [tweezers](#), unplug the gray and black antennae cables.

⚠ Be gentle: The cables are fragile.

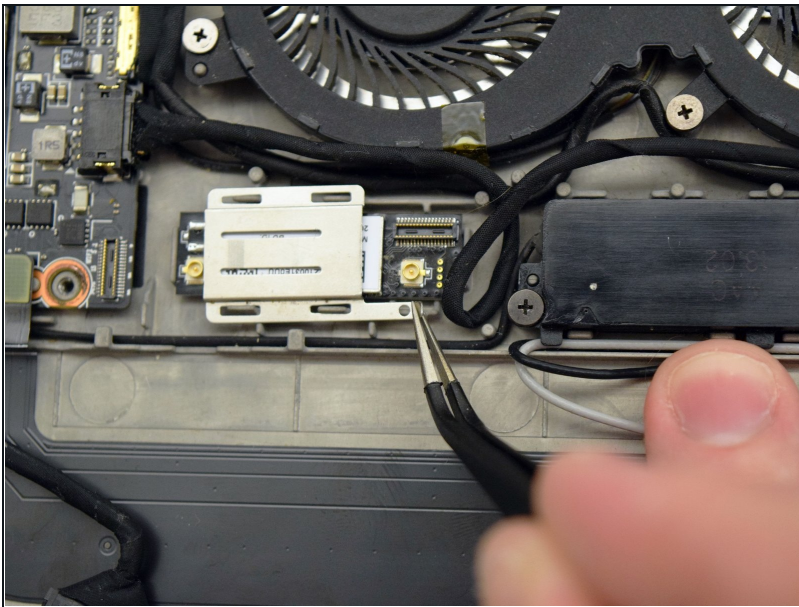
Step 14



- Using the tweezers, remove the ribbon cable connecting the WiFi module to the motherboard.

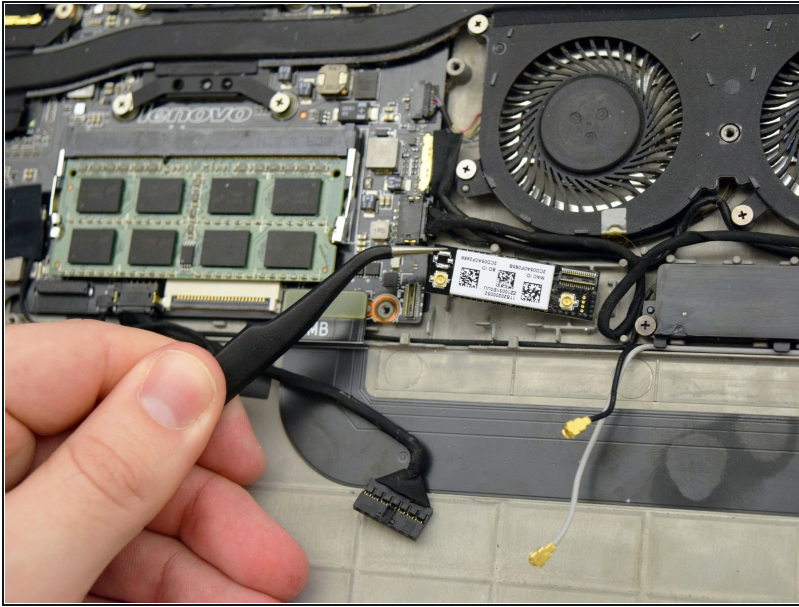
⚠ Be gentle: The ribbon cable and its connectors are fragile.

Step 15



- Using the tweezers, lift up on the retaining tab of the module retention bracket and slide the bracket to the left, then lift it free.

Step 16



- Gently lift the WiFi module out of the laptop.

To reassemble your device, follow these instructions in reverse order.