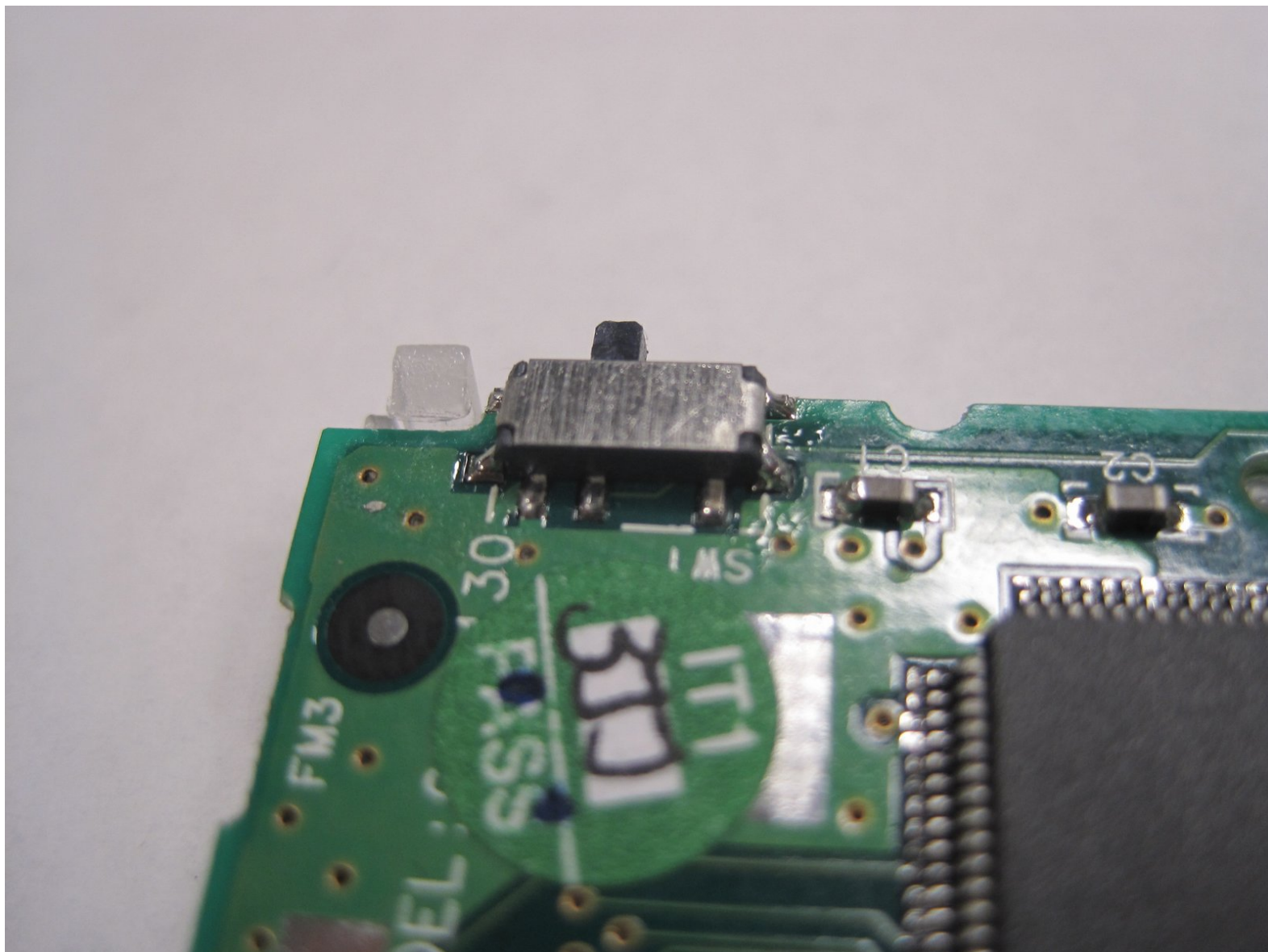




Creative Nomad II Lock/Unlock Switch Replacement

Use this guide to replace the lock/unlock switch on your CREATIVE NOMAD II Media Player.

Written By: Craig Fischer





TOOLS:

- [Phillips #00 Screwdriver](#) (1)
 - [Tweezers](#) (1)
-

Step 1 — Battery



- Using your thumb, slide down and remove the battery cover.

Step 2



- Using your index finger, remove the old AA battery.
- Install the new AA battery.

Step 3 — Smart Media Card



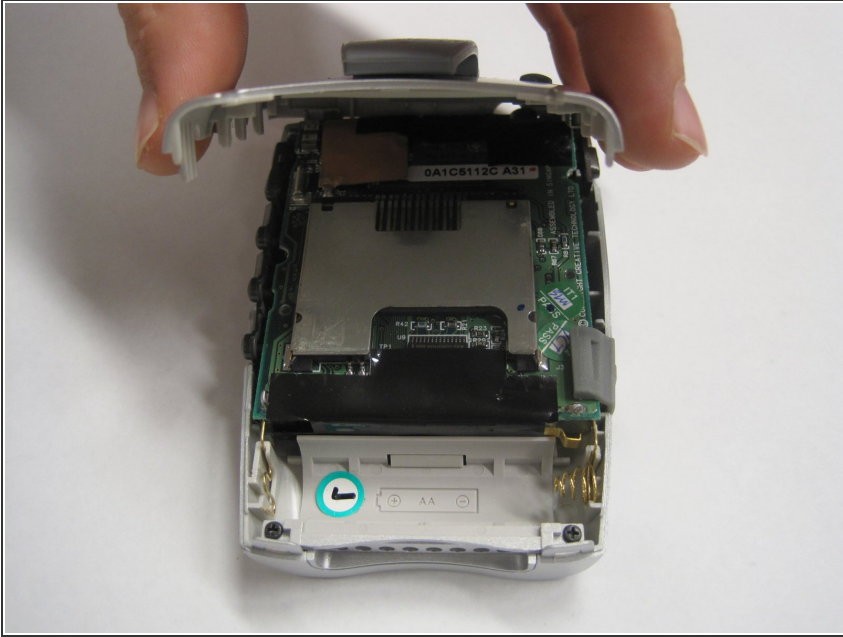
- Slide down the eject button.
- Pull out the old SmartMedia Card.
- Insert the new SmartMedia Card.
 - The notched corner of the SmartMedia card should go in the top left corner.

Step 4 — Back Cover



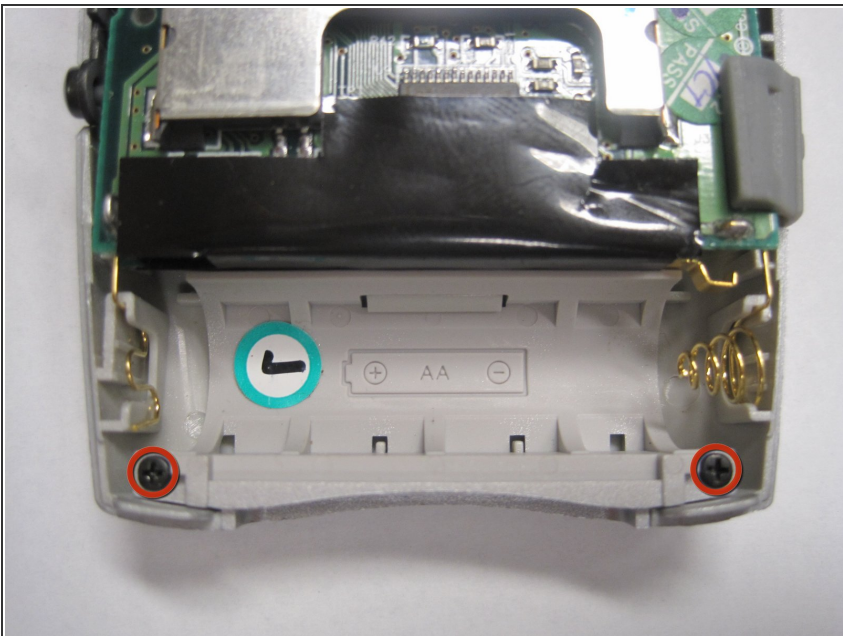
- Using a Phillips #00 Screwdriver, remove the two 7.5mm screws from the sides of the back cover.

Step 5



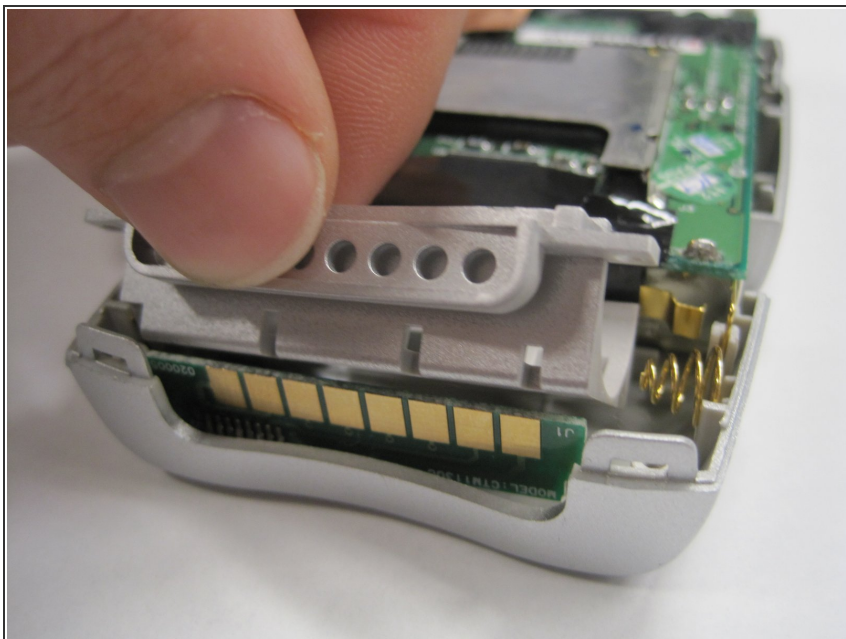
- Lift the back cover off of the NOMAD II.
- ❗ Remove the rubber USB port cover, the connected buttons along the left edge, and the plastic lock/unlock button on the upper right edge of the device.

Step 6 — Battery Compartment



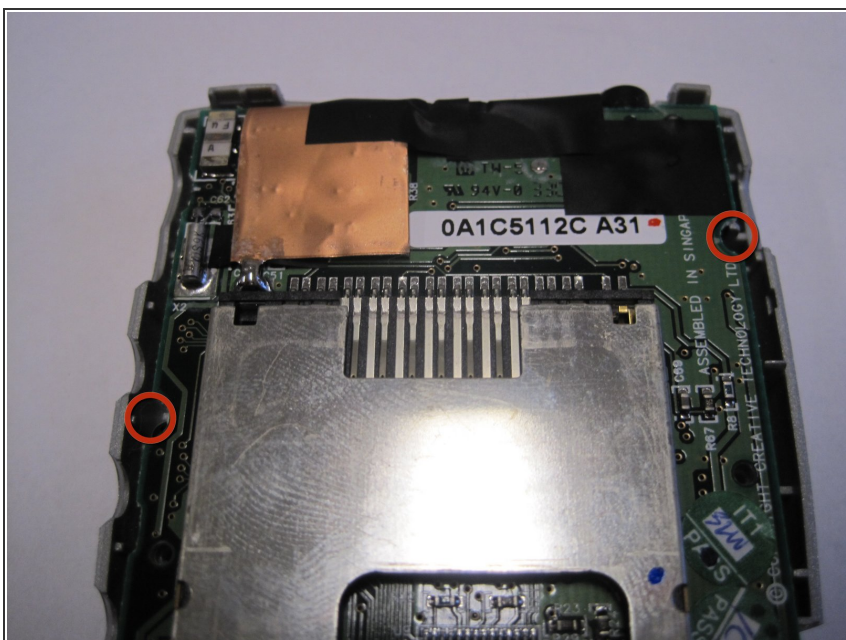
- Using a Phillips #00 Screwdriver, remove the two 5.5mm screws from the sides of the battery compartment.

Step 7



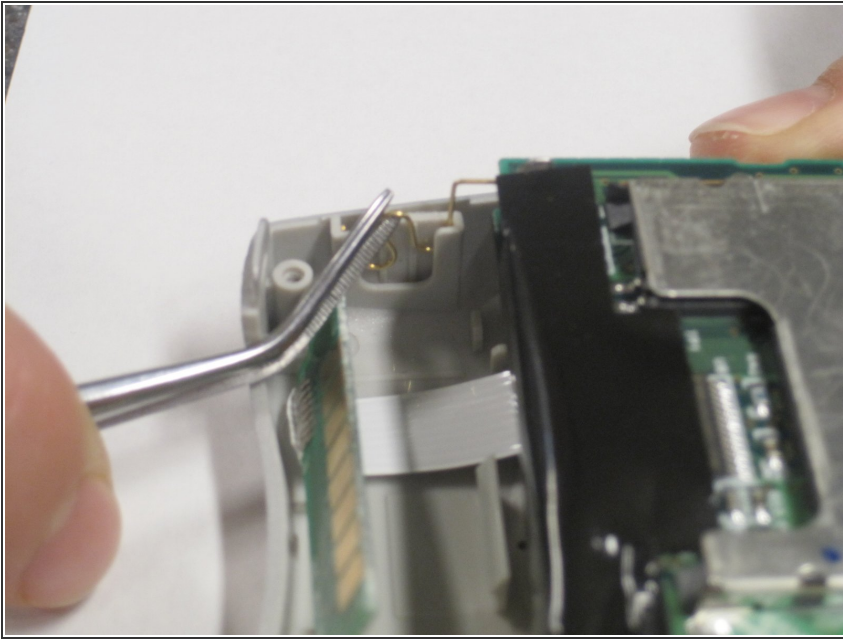
- Carefully remove the battery compartment.

Step 8 — Circuit Boards



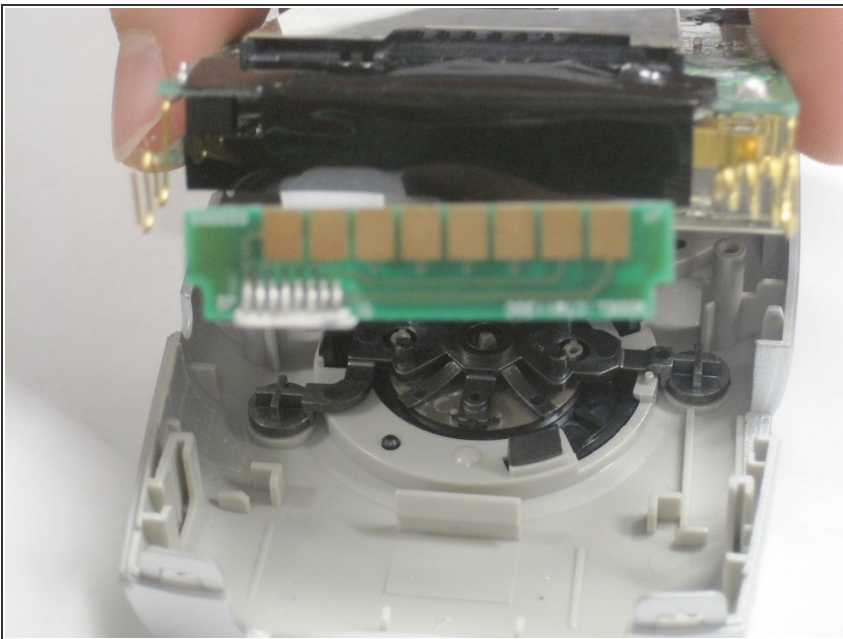
- Using a Phillips #00 Screwdriver, remove the two 5.5mm screws on the left and right edges of the circuit board.

Step 9



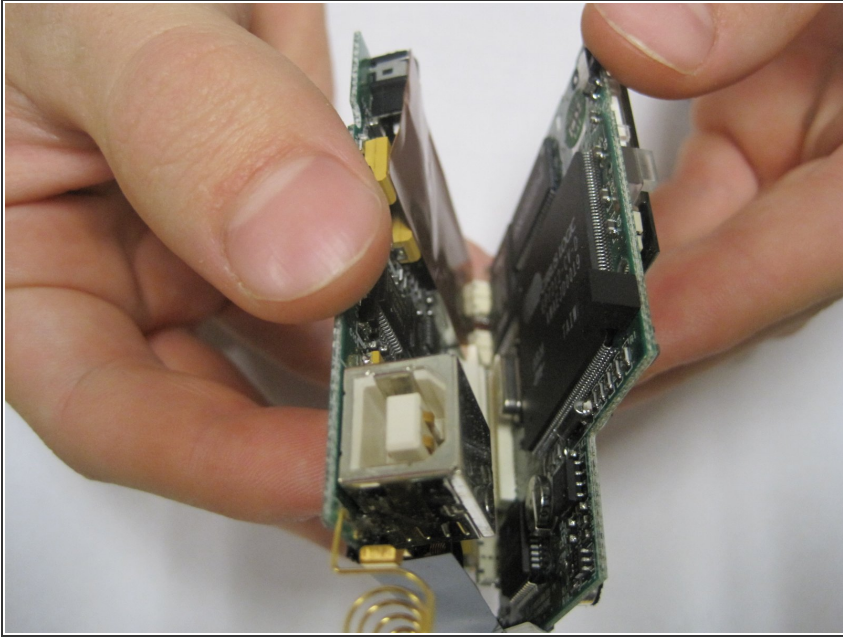
- Using a pair of tweezers, carefully pry the metal loop on the left side of the battery compartment away from the case.

Step 10



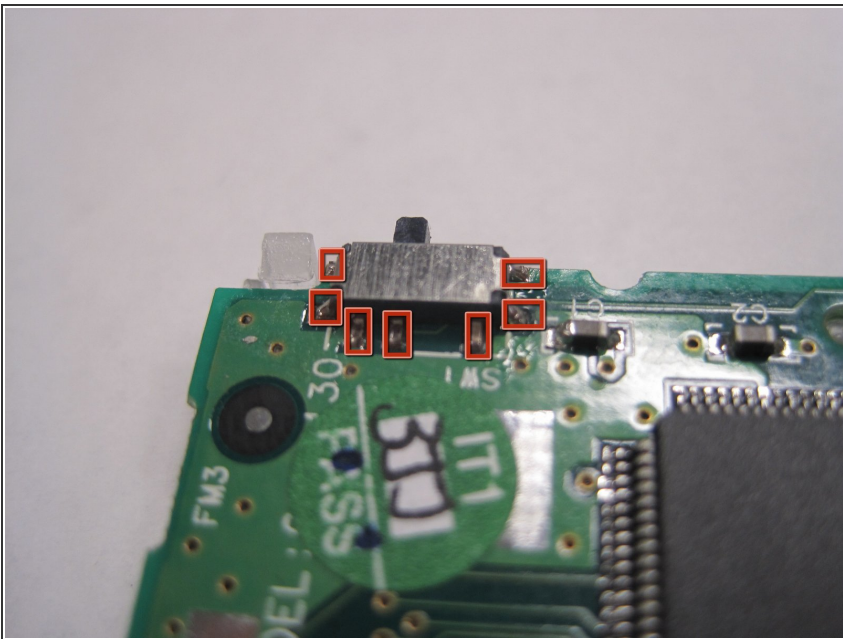
- Pull the circuit boards out of the back cover.
- ⓘ During reinstallation, firmly press the top of the circuit boards into the cover until you hear a click.

Step 11



- Gently pry the circuit boards apart.
- ⓘ This must be done with the USB port facing up, as shown.

Step 12 — Lock/Unlock Switch



- Desolder the seven solder joints which hold the lock switch in place.
- Install the new lock/unlock switch.

To reassemble your device, follow these instructions in reverse order.