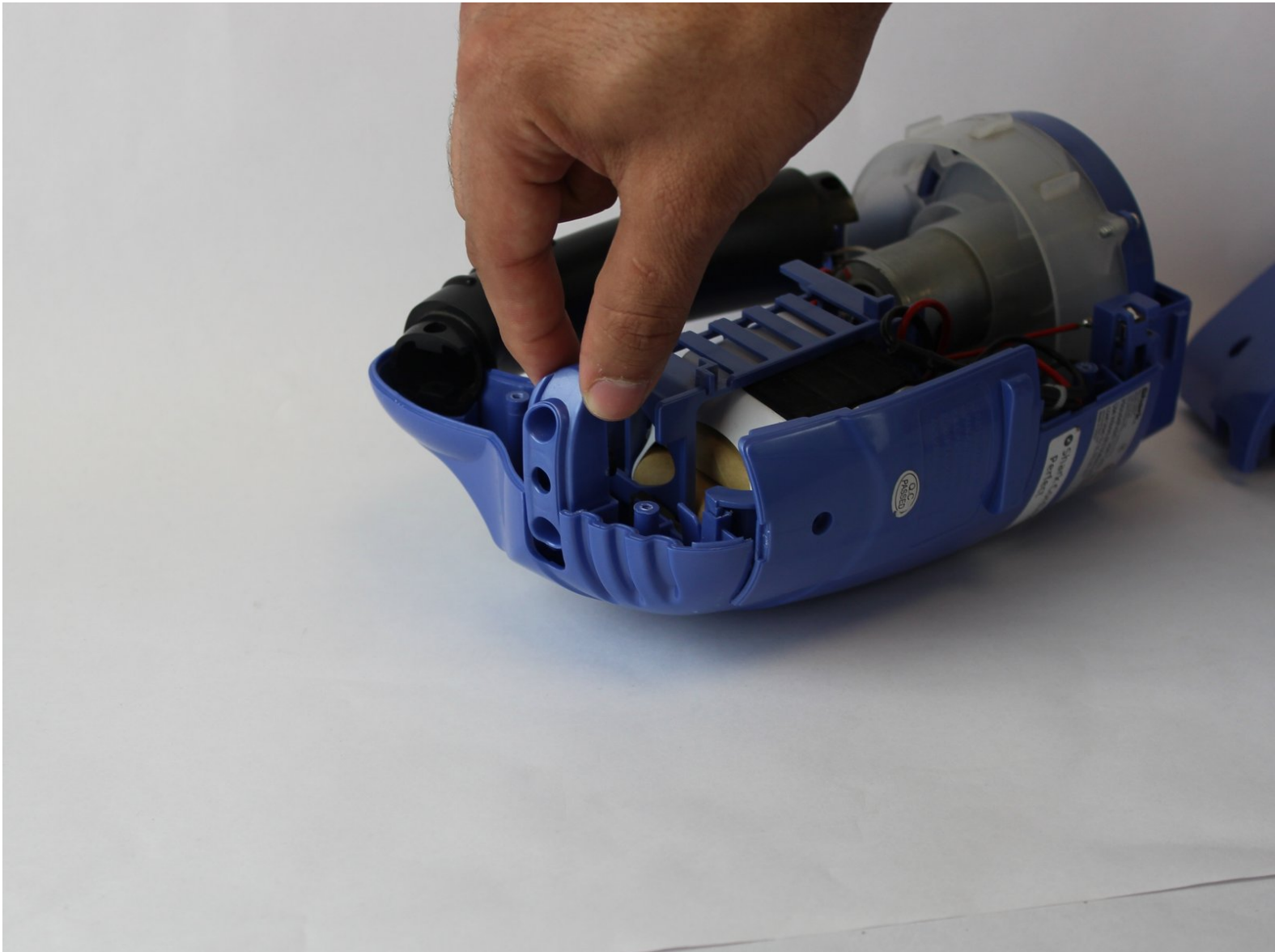




Shark Cordless Pet Perfect Charging Port Replacement

Replacing the Charging Port on the Shark Cordless Pet Perfect

Written By: Ashley Calkins



INTRODUCTION

If you are having a problem with your device's charging port, here is a step by step guide to replace a faulty charging port of your Shark Cordless Pet Perfect.



TOOLS:

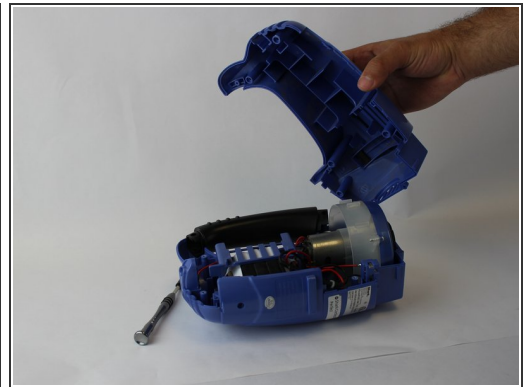
- [Soldering Iron](#) (1)
 - [Phillips #2 Screwdriver](#) (1)
-

Step 1 — Charging Port



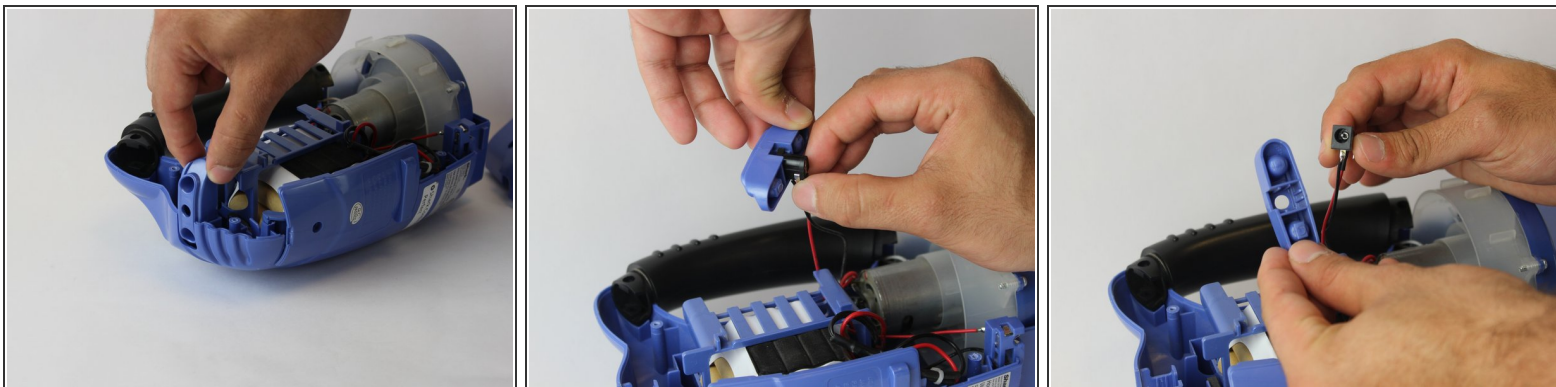
- Remove the dust cup container from the motor housing.

Step 2



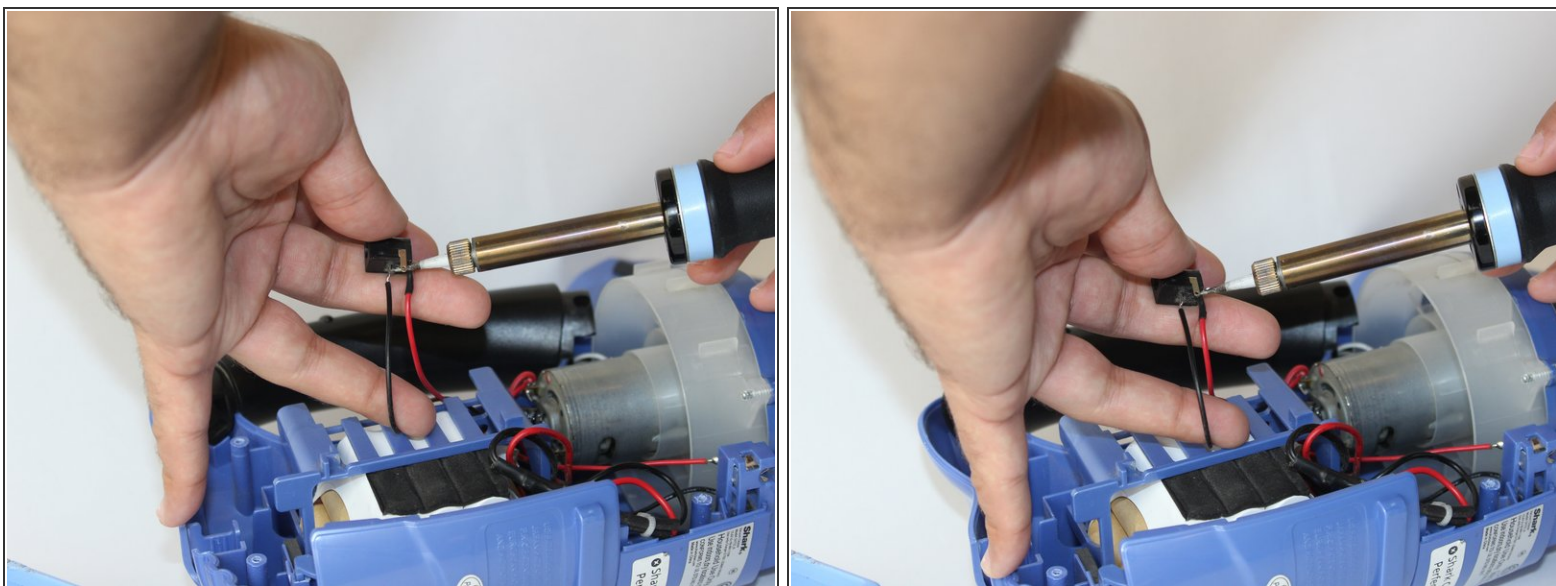
- Remove the five 14mm screws with the PH 2 bit. Once all the screws are removed, pull one part of the housing away from the other.

Step 3



- Pull the charging port mount away from the housing. Once separated, pull the the charging port out of the mount to access the charging port itself.

Step 4



- Use a soldering iron to disconnect the wires from both terminals.
- ⓘ For soldering help, check out iFixit's [How to Solder and Desolder Connections](#) guide.

To reassemble your device, follow these instructions in reverse order.