



# Dell Latitude X300 Hard Drive Replacement

This guide will show how to remove the hard drive from the Dell X300.

Written By: Taylor Bateman



---

## INTRODUCTION

Before removing/replacing the Dell Latitude X300 hard drive, the battery, keyboard, and palm rest/trackpad will need to be removed.

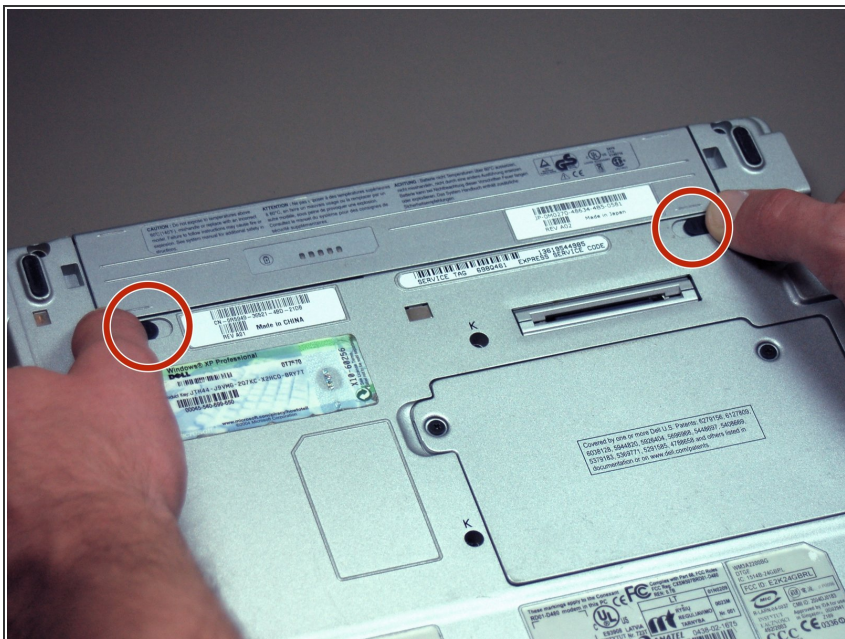



### TOOLS:

- [Phillips #00 Screwdriver](#) (1)
-



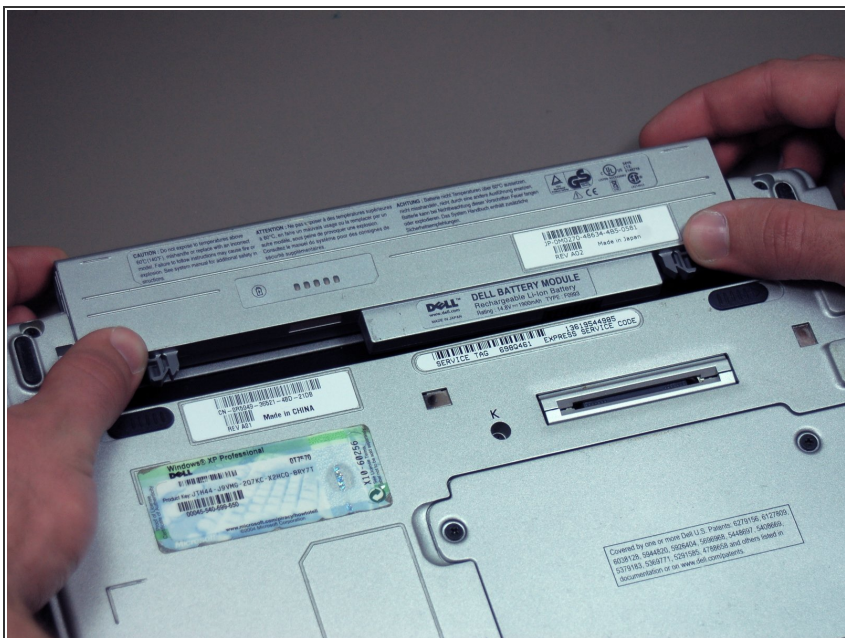
## Step 1 — Battery



 Before removing the battery from the laptop, make sure the power is off.

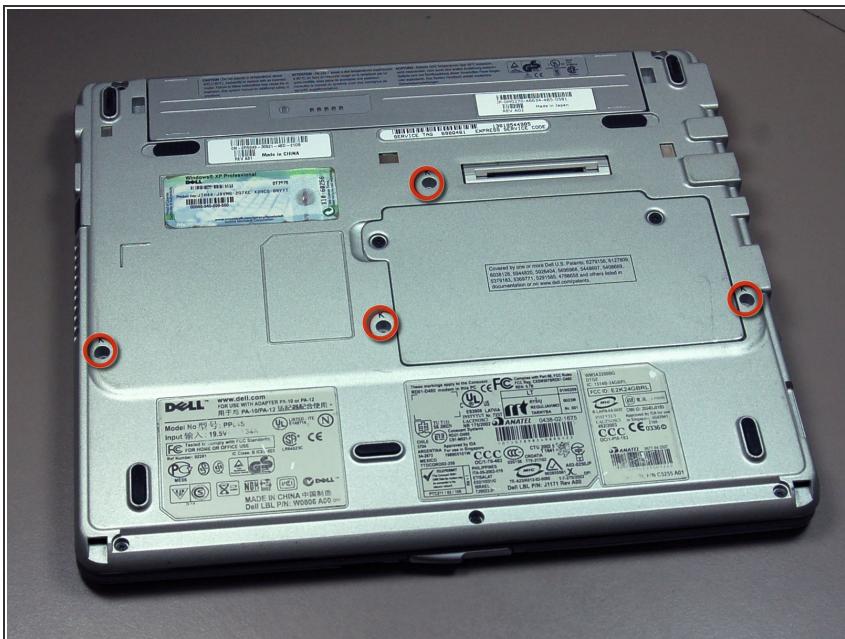
- Push both battery locking clips outward at the same time.

## Step 2



- Slide the battery out of the laptop.

## Step 3 — Keyboard



- Remove the four 4 mm Phillips #0 screws from the bottom of the laptop.

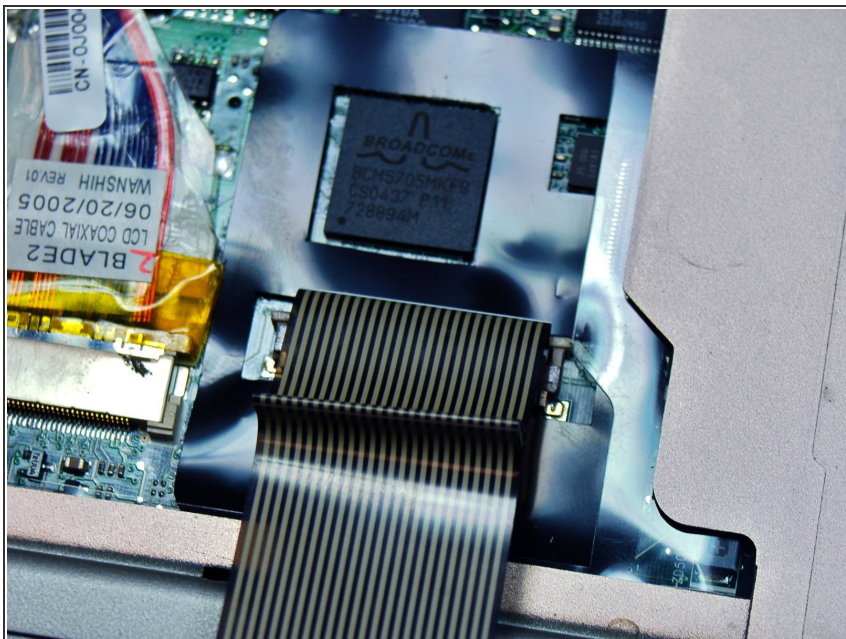
## Step 4



- Carefully turn the laptop over and open the screen all the way.
- Locate the slot to remove the keyboard in the lower left hand corner.
- Using a spudger as a lever, insert it into the slot and gently pry up.



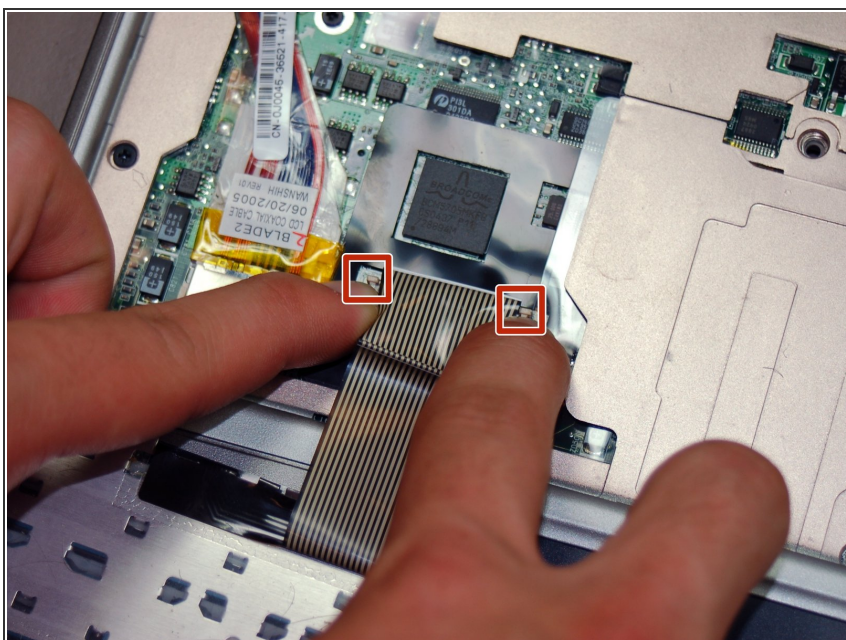
## Step 5



- After the keyboard pops up, pull it away from the screen just enough to release the tabs.

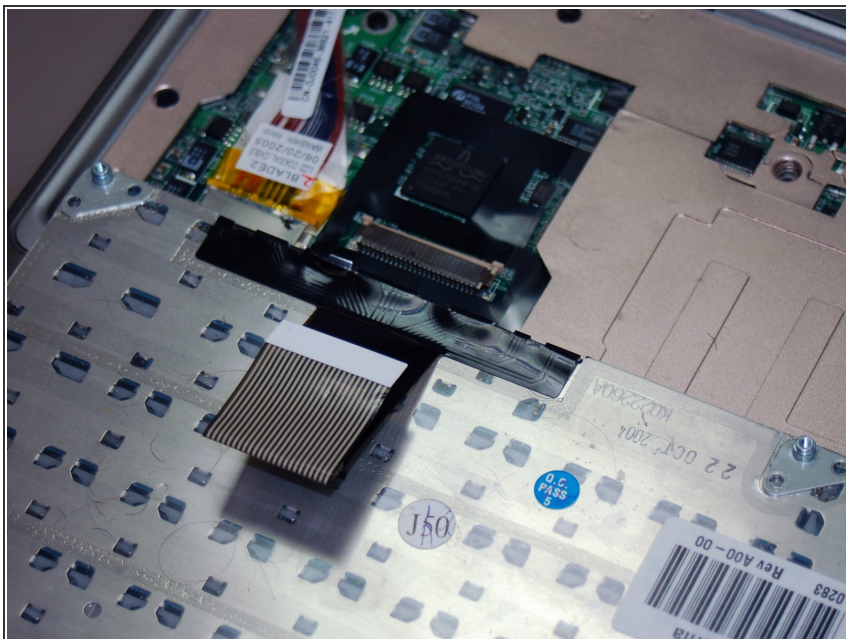
⚠ Don't pull the keyboard out forcefully as there is still a ribbon attached to the laptop.

## Step 6



- Unlock the ZIF connector on the computer by pushing the two outside tabs toward the screen.

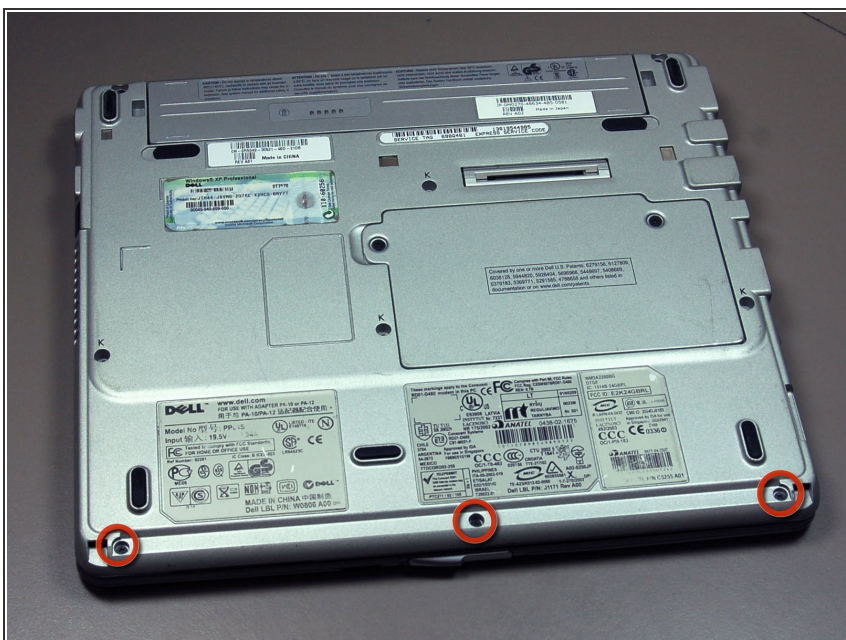
## Step 7



- Remove the flexible ribbon from the ZIF connector.

⚠ Do not pull on the ribbon to remove it from the ZIF connector.

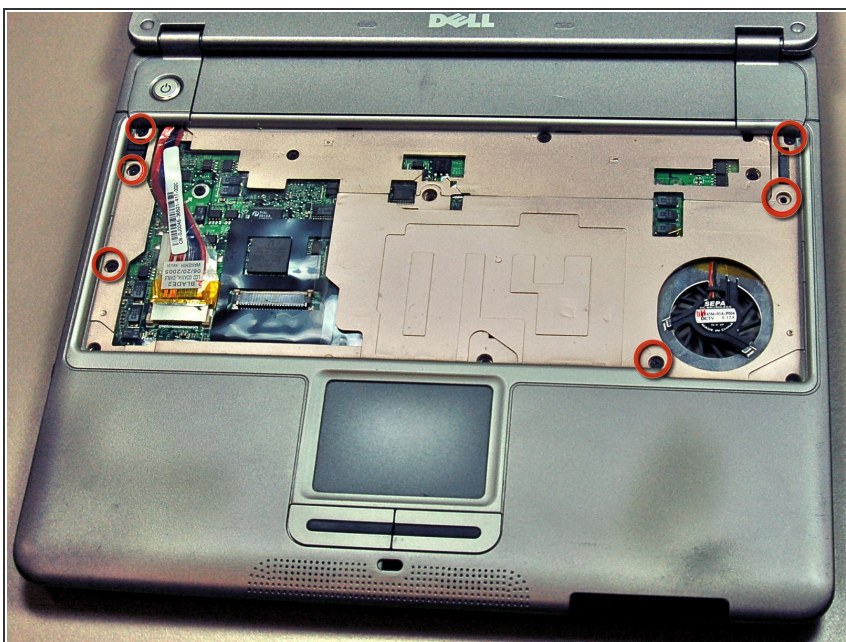
## Step 8 — Palm Rest/Track Pad



- Position the laptop so that the bottom is facing upward.
- Remove the three 4 mm Phillips #0 screws holding the bottom of the palm rest.

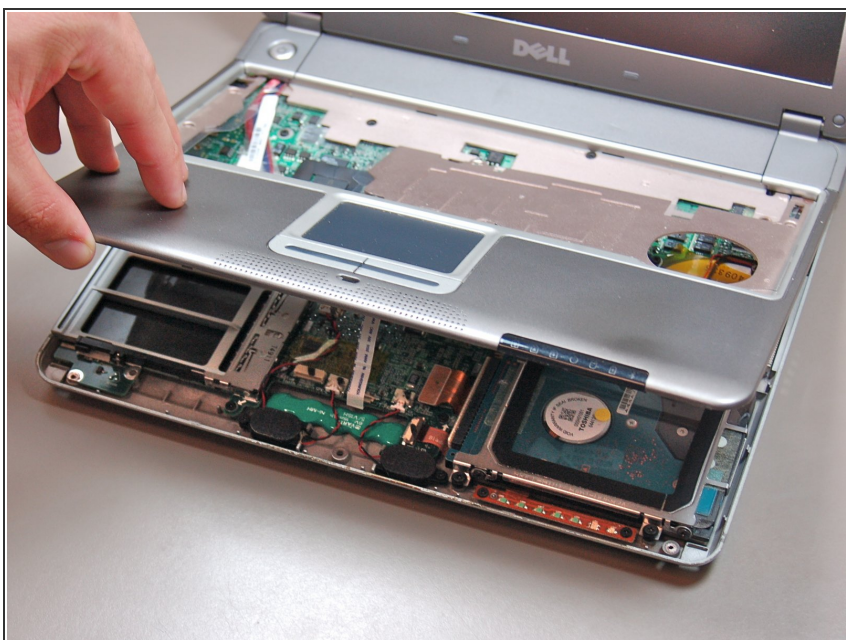


## Step 9



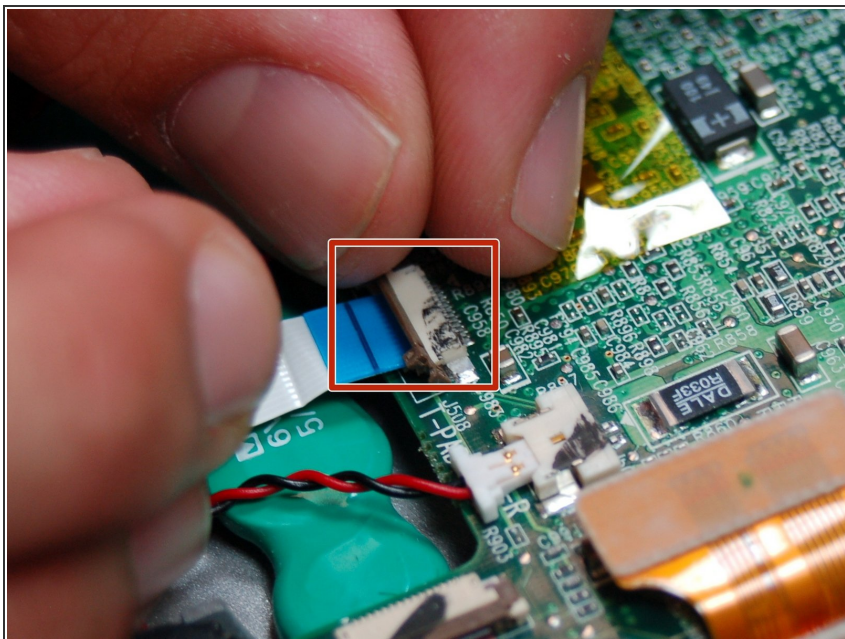
- Return the laptop to proper position and open the screen.
- Remove the six 4 mm Phillips #0 screws holding in the palm rest.

## Step 10



- Gently lift the palm rest and rotate it outward so that the bottom is now facing up.
- ⚠ The ribbon attached to the track is short and extremely delicate. Use care when moving the palm rest.

## Step 11



- Lift up on the small ZIF connector and remove the ribbon.
- ⚠ If the ribbon seems stuck, gently wiggle it to remove. Do not pull the ribbon with great force.

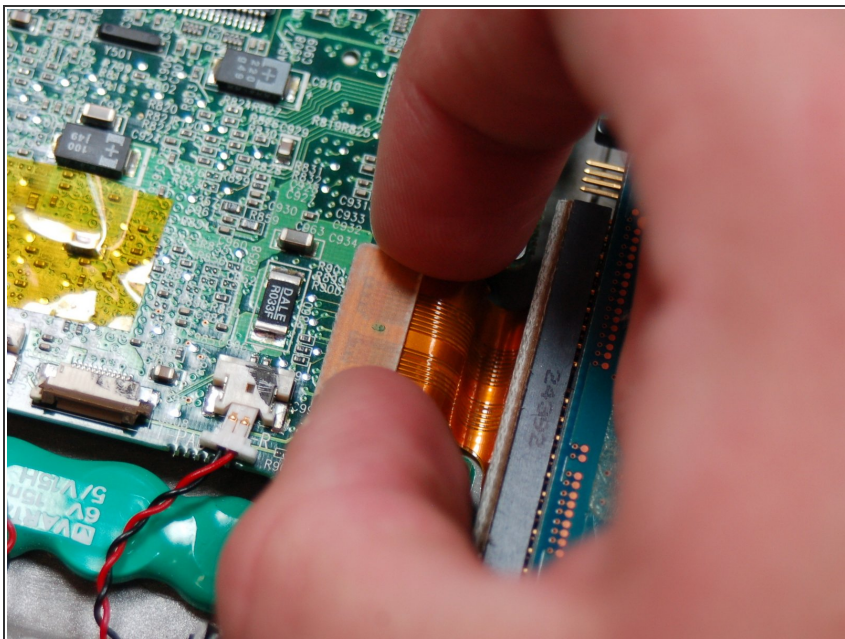
## Step 12 — Hard Drive



- Remove the 4 #00 5 mm screws holding the hard drive to the case.



## Step 13



- Carefully pull up on the hard molded plastic portion of the ribbon to detach it from the computer.

## Step 14



- Remove the hard drive from the laptop.

To reassemble your device, follow these instructions in reverse order.