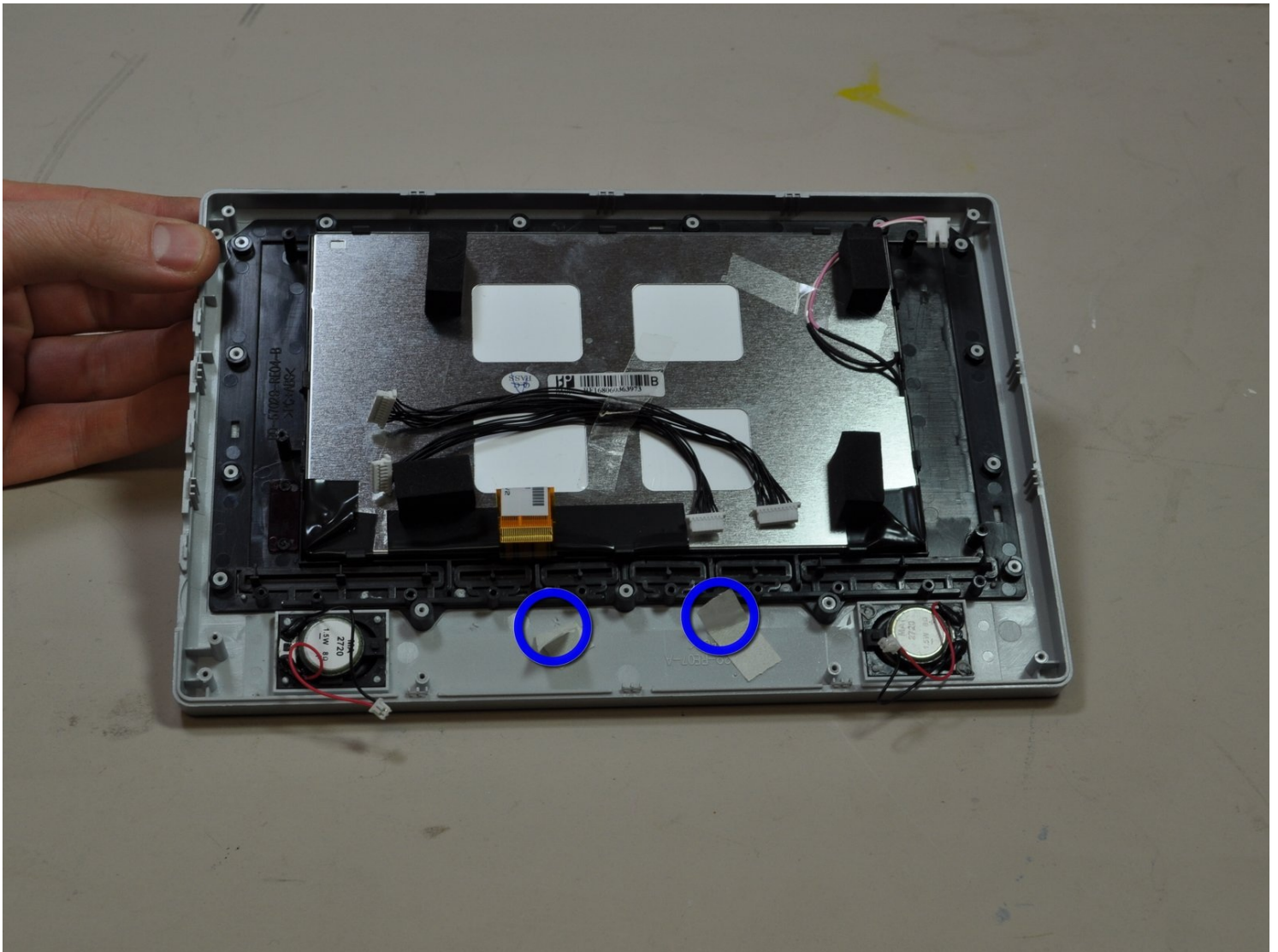




Polaroid LCD-0700P Front Panel Buttons Replacement

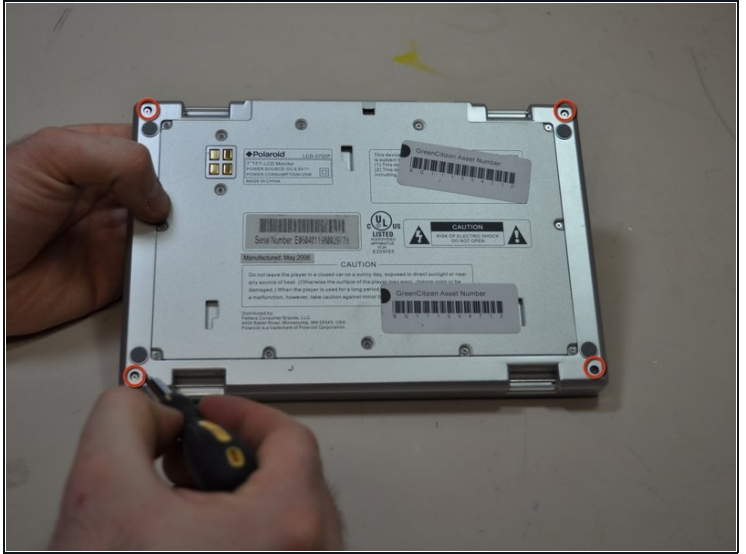
Written By: Mario T



TOOLS:

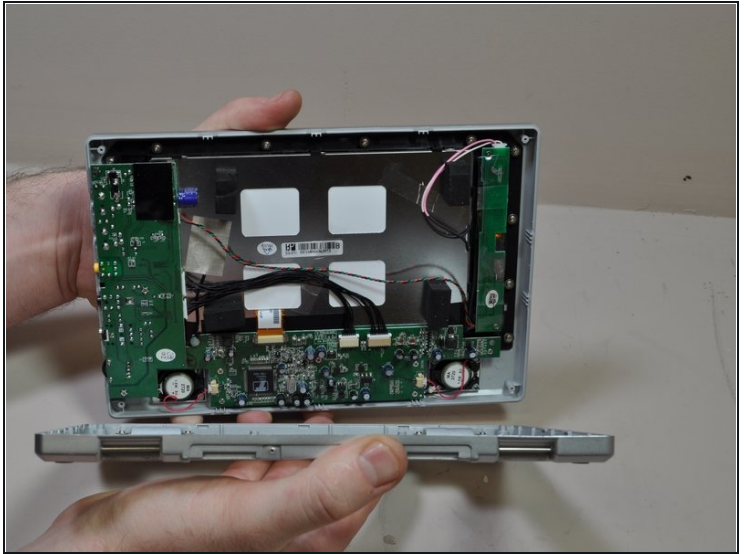
Heavy-Duty Spudger (1)
Phillips #0 Screwdriver (1)
iFixit Opening Tool (1)
Flathead 3/32" or 2.5 mm Screwdriver (1)

Step 1 — Case



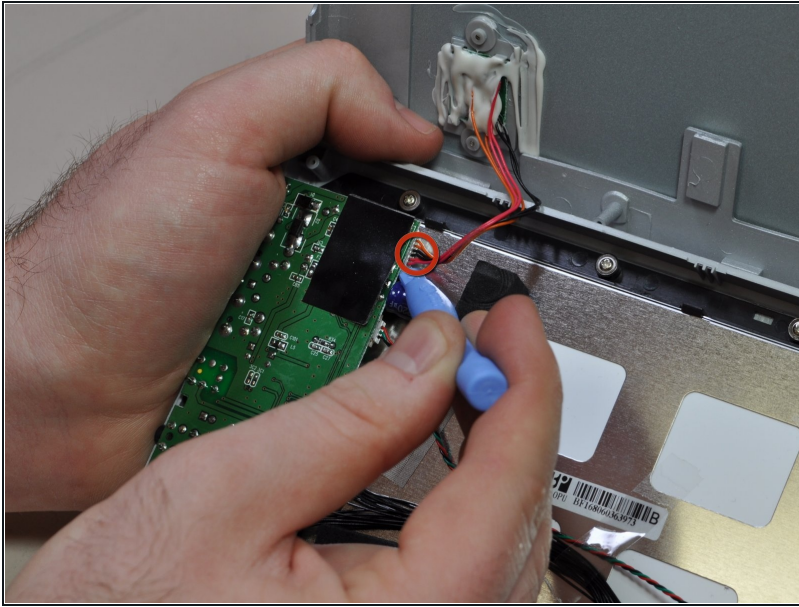
- Turn the entire device over, so that the underside of the device is facing upward.
- With the underside of the device facing up, locate the 11mm screw found in each far corner of the device. Remove the single 11mm screw from each of the four corners, using the Phillips #0 screwdriver.

Step 2



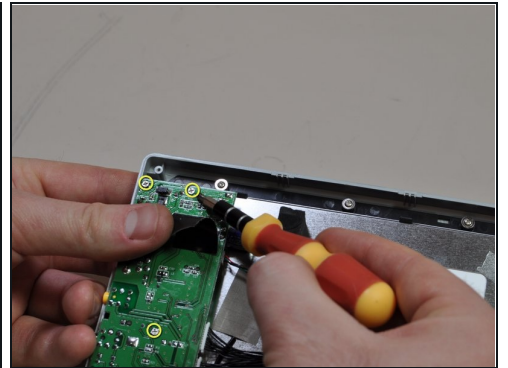
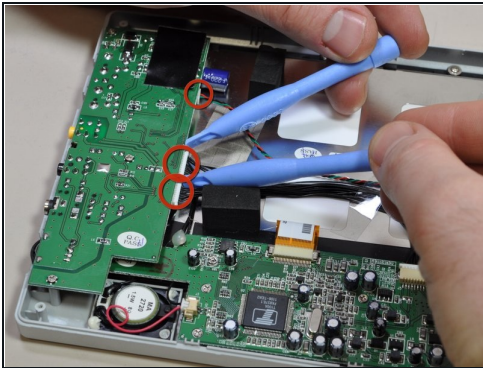
- Turn the device so that the underside faces you, and the edge where the case and device bind, faces upward. The opening of the device should be face down.
 - In this position you will see a crease line between the device and the top cover. Gently Insert your blue plastic opening tool into the crack of the crease line, between the front and back cover to separate them.
- ⚠ Be careful when separating the front and back covers, as the two are held together by a thin wire.
- Separate the halves of the case.

Step 3



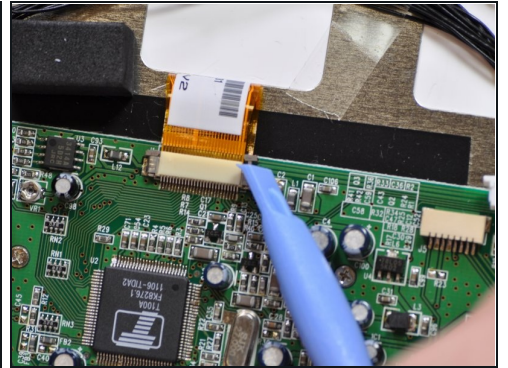
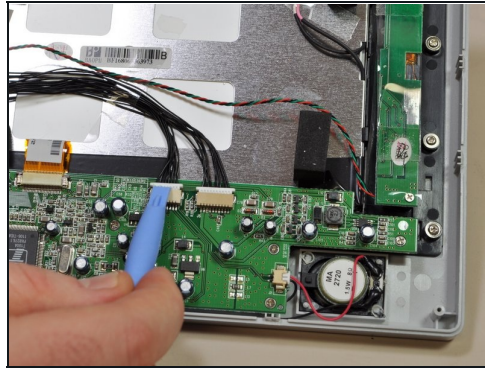
- Locate the input/output board on the top left hand corner of the device. It will look like a green circuit board with wires protruding and connecting to the case cover.
- Using your blue plastic opening tool, disconnect the multicolored wires located on the input/output board. These will be the same multicolored wires that connect the back cover to the input/output board.

Step 4 — Input/Output Board



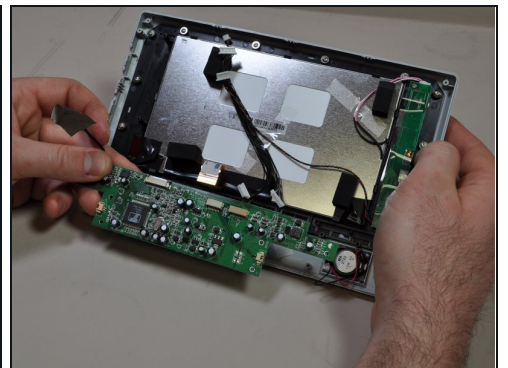
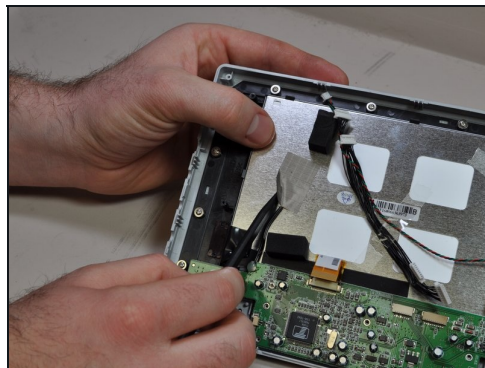
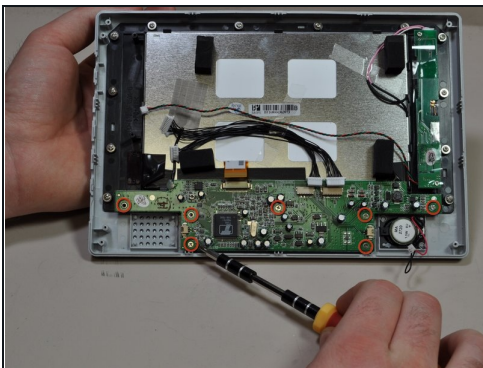
- Use two blue plastic opening tools to remove the three wire connectors on the side of the input/output board.
- Use a Philips #0 screwdriver to remove the five screws on the board.
- ① One of the screws is hidden below the black tape, so gently pull the tape to the side to gain access to it. Be sure to replace the tape when reinstalling the board.
- Lift board from case.

Step 5 — Logic Board



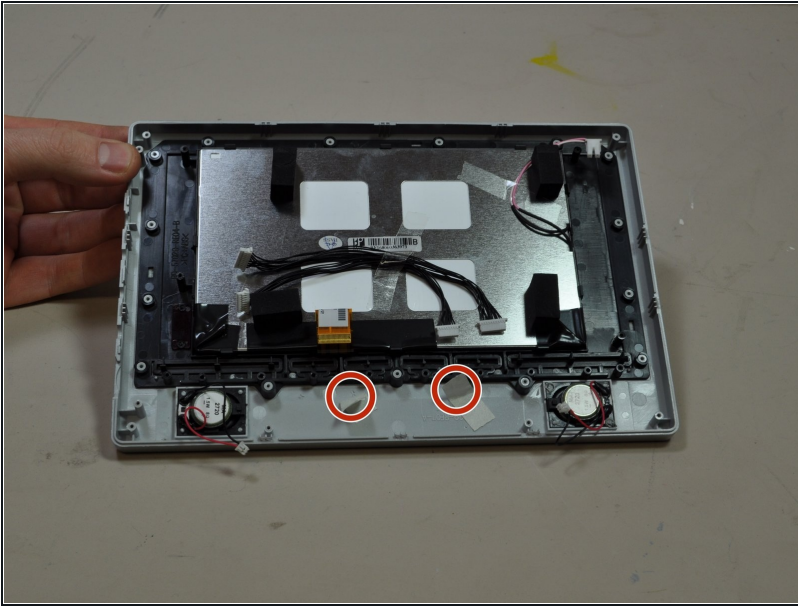
- Remove the five different connections to this board. Two from the speakers, two from input/output board and the orange ribbon cable.
- Remove connections from input/output board and speaker with the plastic opening tool.
- Remove the orange ribbon cable using the plastic opening tool to release the two brown retention tabs.

Step 6



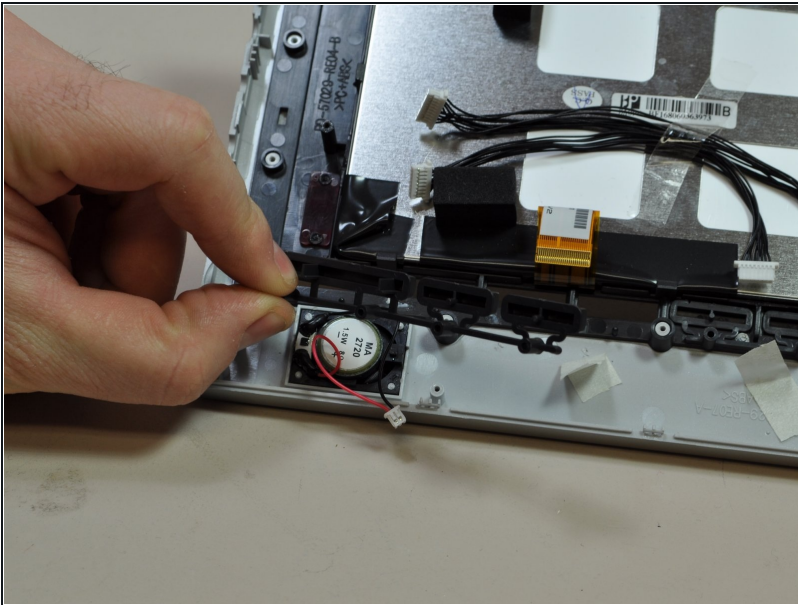
- Remove the seven 5mm screws using the Phillips #0 screwdriver.
- Detach the wire mesh tape connection the logic board to the LCD screen with the sharp end of the spudger.
- Remove the logic board with your hands.

Step 7 — Front Panel Buttons



- Peel back the tape holding the button clusters down.

Step 8



- Slide Button clusters off of positioning posts.

To reassemble your device, follow these instructions in reverse order.