



Written By: otrebla





TOOLS:

- [Phillips #1 Screwdriver](#) (1)
-

Step 1 — Dell Latitude D520 disassembly and power jack repair



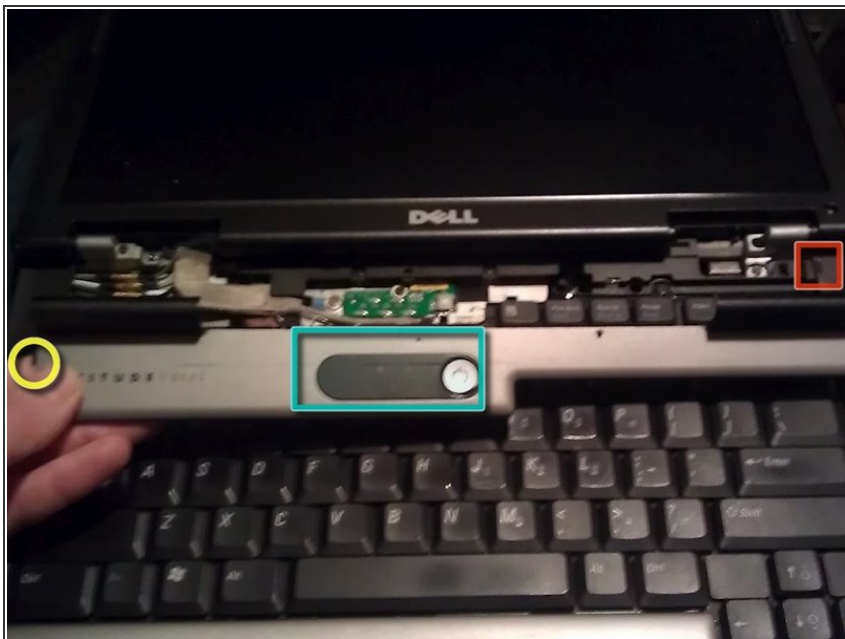
- 1. unplug laptop
- 2. remove battery
- 3. remove screw
- Remove disk drive by pressing in the pull mechanism, causing it to extend outwards, then use the pull handle to pull out disk drive.

Step 2



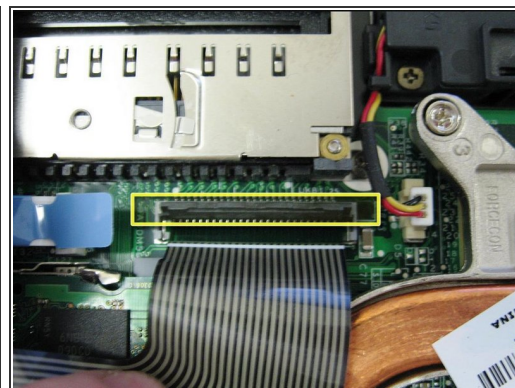
- remove 2 retention screws
- slide HD carriage out

Step 3



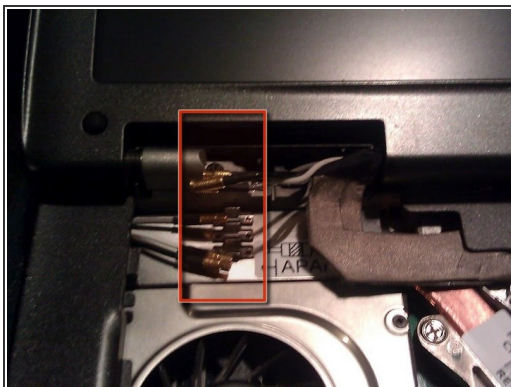
- open laptop
- with a small screwdriver carefully pry plastic cover
- ❗ it helps to open the laptop all the way
- be careful not to break these clips
- The clips found under here were specially tricky

Step 4



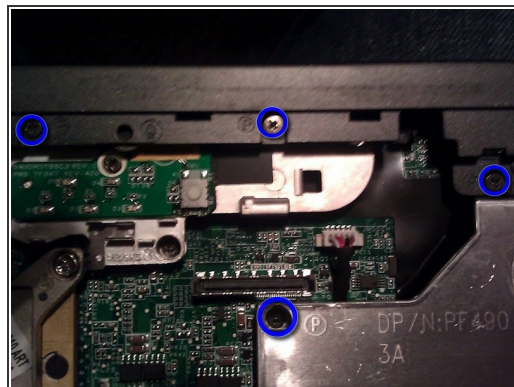
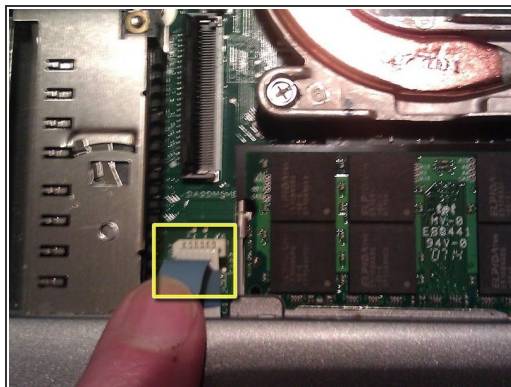
- remove screws X 2
- carefully lift keyboard, being careful not to damage the flat cable.
- lift up tab to release flat cable and remove keyboard

Step 5



- disconnect the three wires
- disconnect video connector
- remove ground screw
- remove 3 screws
- remove last screw, note this screw is longer than the other three
- remove screen

Step 6



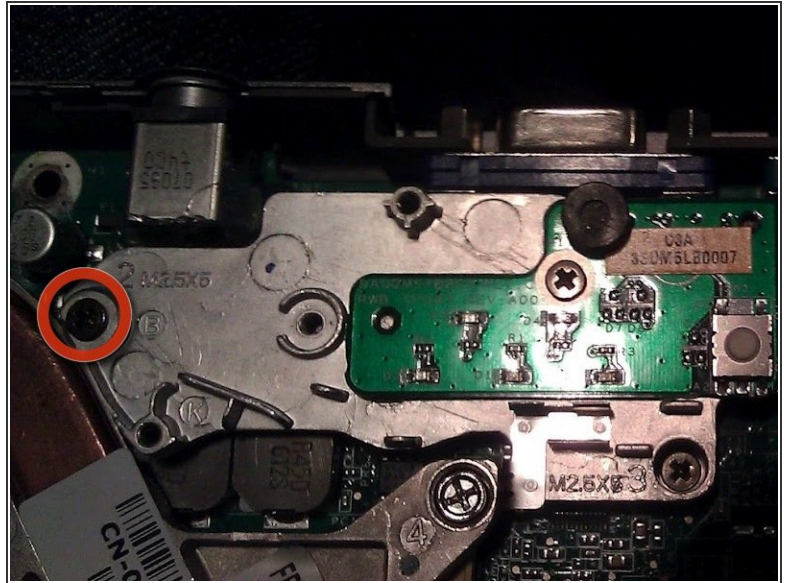
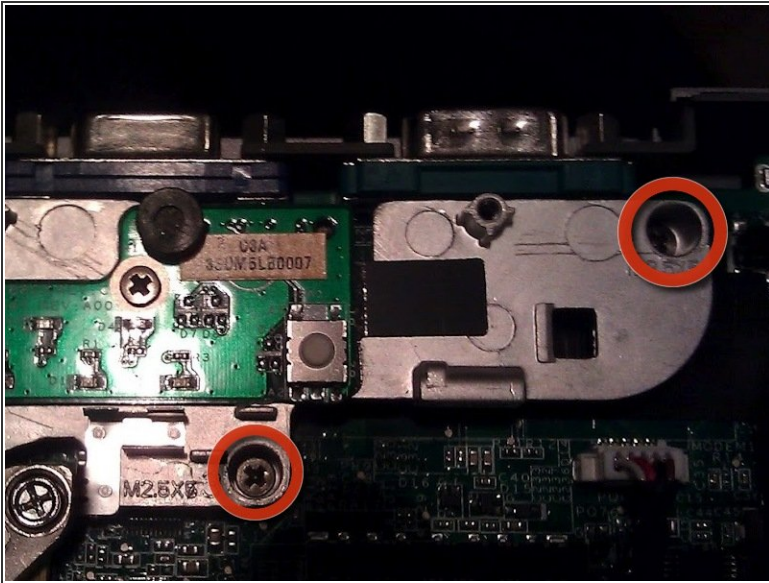
- Remove these 15 screws, they are all the same size
- remove screw and cover
- flip the laptop over
- remove touchpad flat cable by gently pulling up.
- remove 4 screws marked with the letter P

Step 7



- remove top cover being careful not to break any clips

Step 8



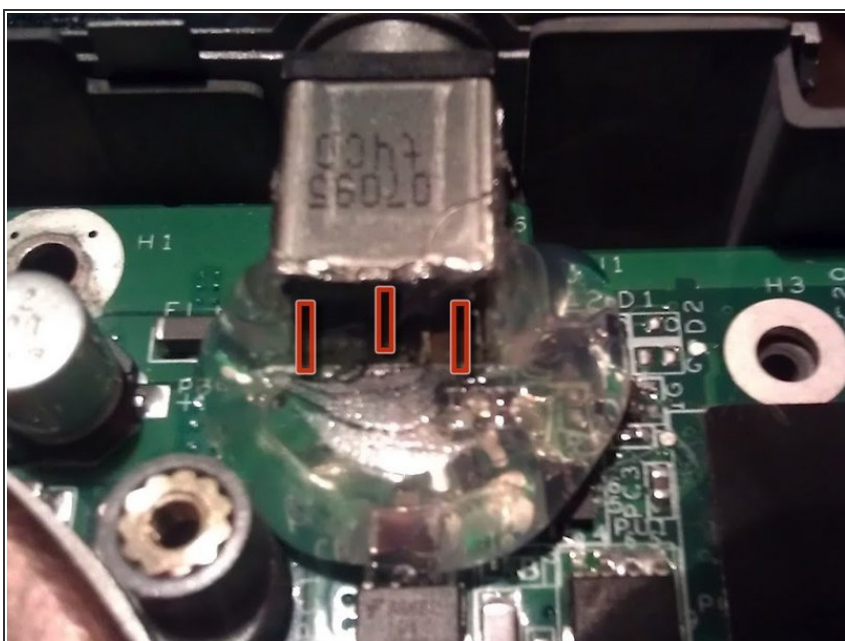
- remove 3 screws
- carefully remove small metal piece that was being held down by the three screws

Step 9



- remove 4 screws
- remove 1 screw
- being careful not to break any clips, separate bottom plastic cover from the mother board carriage.

Step 10



- The middle part of my power connector had sheared away from its solder points on the motherboard.
- I had to use a bit of flux, but I managed to re-tin all three contact point on the motherboard, as well as the pins in the connector.

-
- I re-soldered the whole thing and used my trusty hot glue gun to encase the whole connector to prevent it from happening again anytime soon.
-

To reassemble your device, follow these instructions in reverse order.