



Braun mixer 418 Motor Replacement

Replacing the motor of a Braun mixer, by taking the broken motor out and putting a new motor in.

Geschreven door: Karsten Bakker



INTRODUCTIE

Pressing the big power button on an immersion blender (when the immersion blender is plugged in) should power the mixer. But with a damaged motor, the rotational part is not put in motion, making it unable for the immersion blender to operate. Often the motor is affected by dust or water making it unable to repair the motor. Therefore this guide will help to replace a broken motor with a new one and thereby make your blender work again.



GEREEDSCHAPPEN:

- [Slip Joint Pliers](#) (1)
- [Sharp knife](#) (1)
- [Super Glue](#) (1)
- [Sand Paper](#) (1)
- [iFixit Opening Tools](#) (1)
- [Flathead 3/32" or 2.5 mm Screwdriver](#) (1)



ONDERDELEN:

- [New motor](#) (1)

Stap 1 — Motor



- Press the side buttons on the mixer at the same time pull the two main parts of the mixer apart. Remove (aluminum) lower part of the mixer.

Stap 2



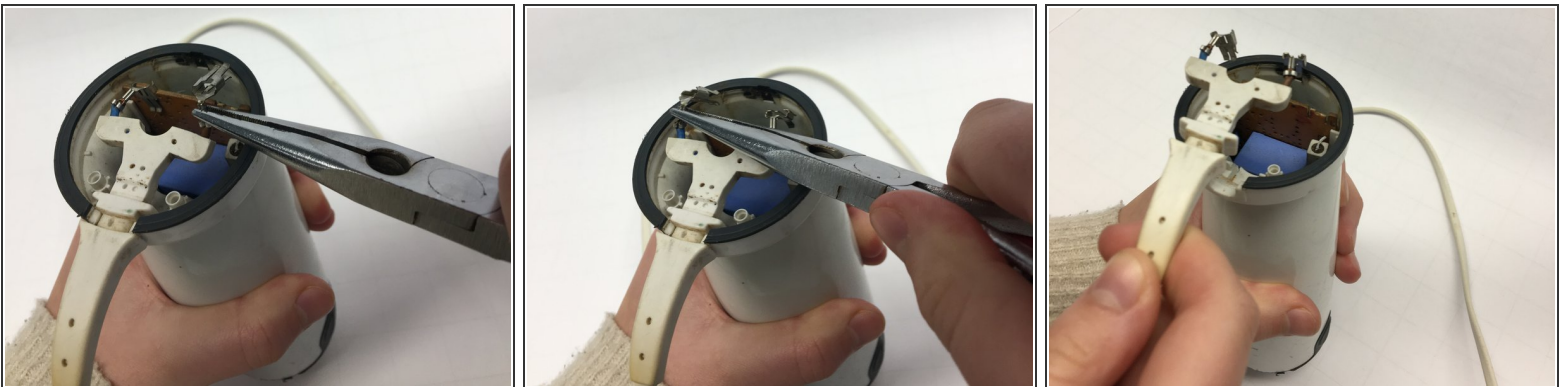
- Pull back the rubberish part of the power cord, located at and connected to the top of the mixer

Stap 3



- Place a flat screwdriver in the notch between the top cover and main body. This notch is located at the original place of the rubberish cord part.
- Build momentum by pressing the screwdriver down and flip out the top cover.

Stap 4



- Place the plier over the metal clip on the circuit board at the end of the brown wire.
- Pull back the plier in the opposite direction of the circuit board while clamping the metal clip
- Place the plier over the metal clip on the circuit board at the end of the blue colour wire and pull the plier back.
- Remove the cord from the hub by pulling the white rubberish part upwards.

Stap 5



- Remove the rubber sealing of the lower part fully round the product
- Do this until the separation line between the lower part and housing is easy accessible .

Stap 6



- Force the prying tool trough the glue by following the separation line.
- Make sure prying goes in approximately 2 centimeter deep and fully round the separation line.

Stap 7



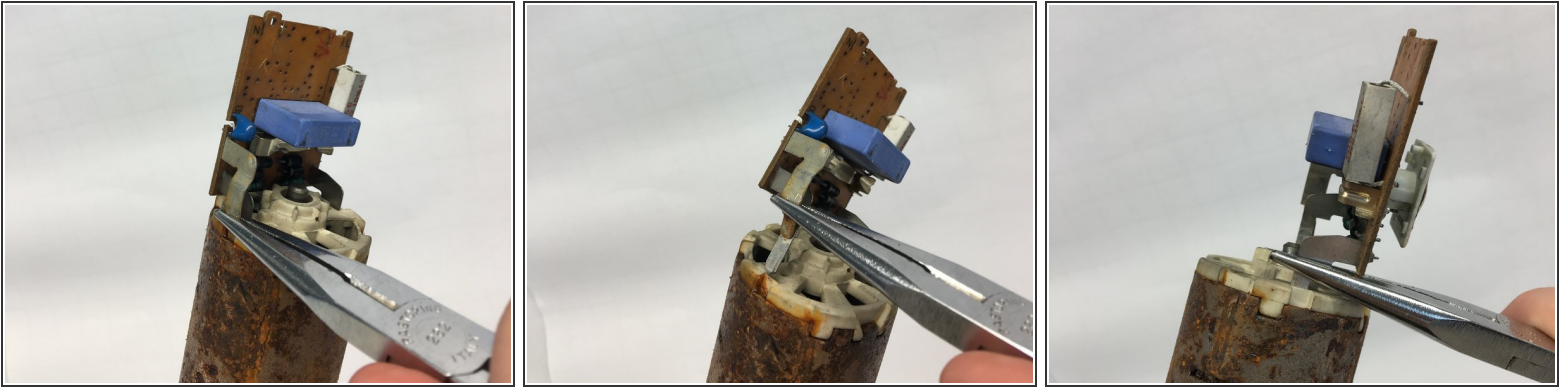
- Press the two rubber side buttons
- Take out the lower part of the housing.
- When not yet possible keeping using the prying-tool (step 6) to loosen this part.

Stap 8



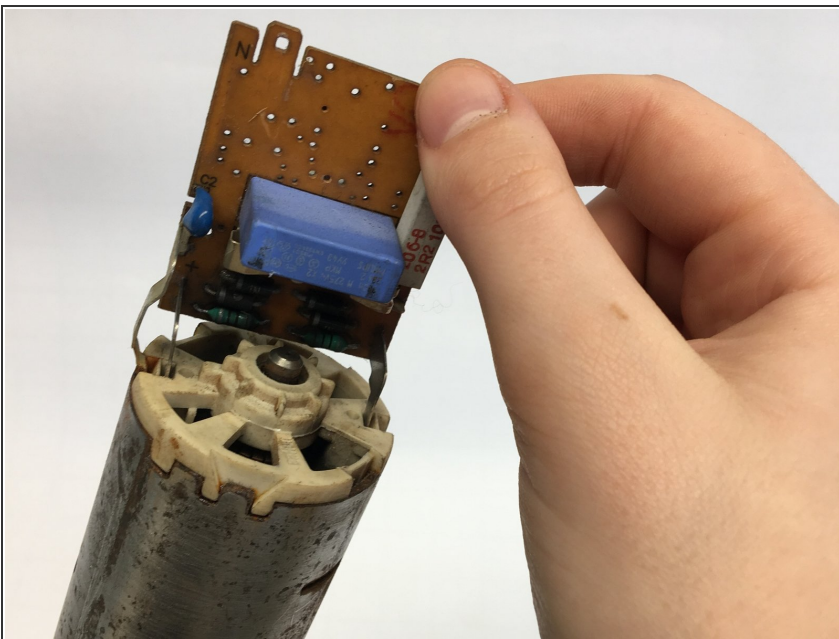
- Take out motor and circuitboard by pulling the rotational cylindric part upwards.

Stap 9



- Place the plier over the small metal plate on the left off the motor when facing the blue box on the circuit board.
- Remove the connection by pulling upwards.
- Remove the second metal plate on the left of the blue box
- Remove the third metal plate on the right of the blue box.

Stap 10



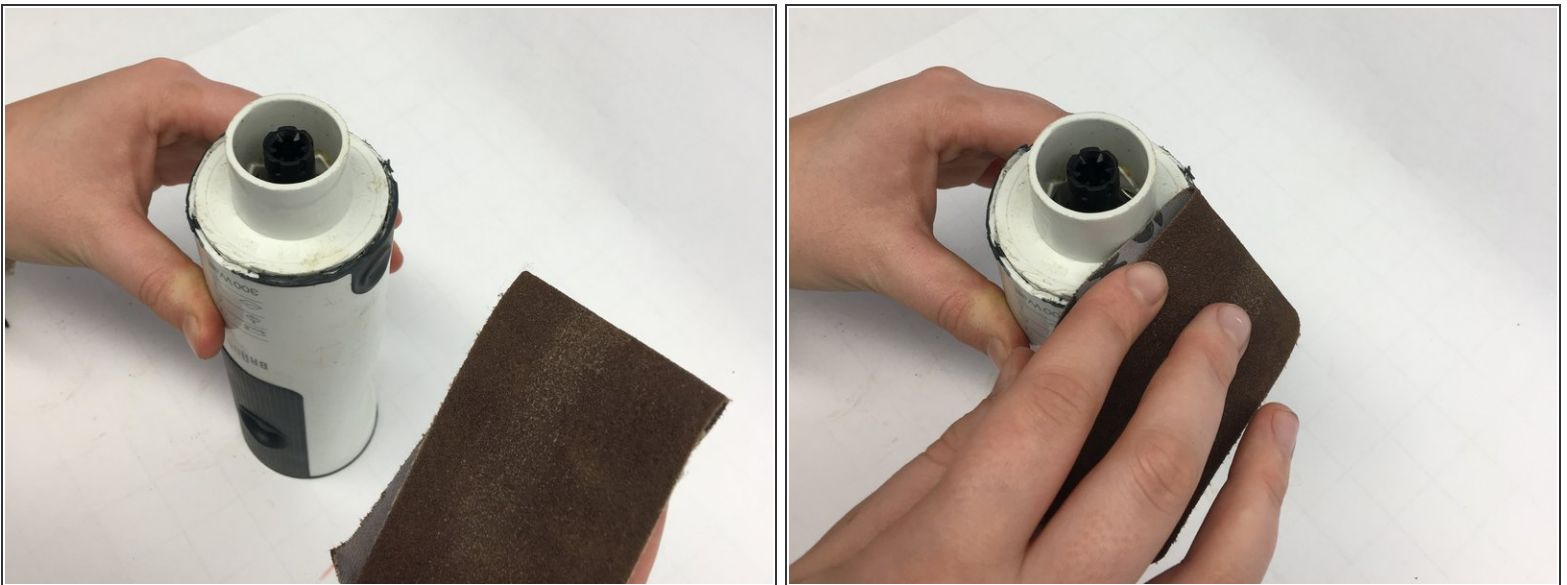
- Connect the new motor to the circuit board following step 9 in opposite direction.
- Put the mixer back together following the taken steps in opposite direction. Steps 11-13 explain difficulties that has to be taken into account.

Stap 11



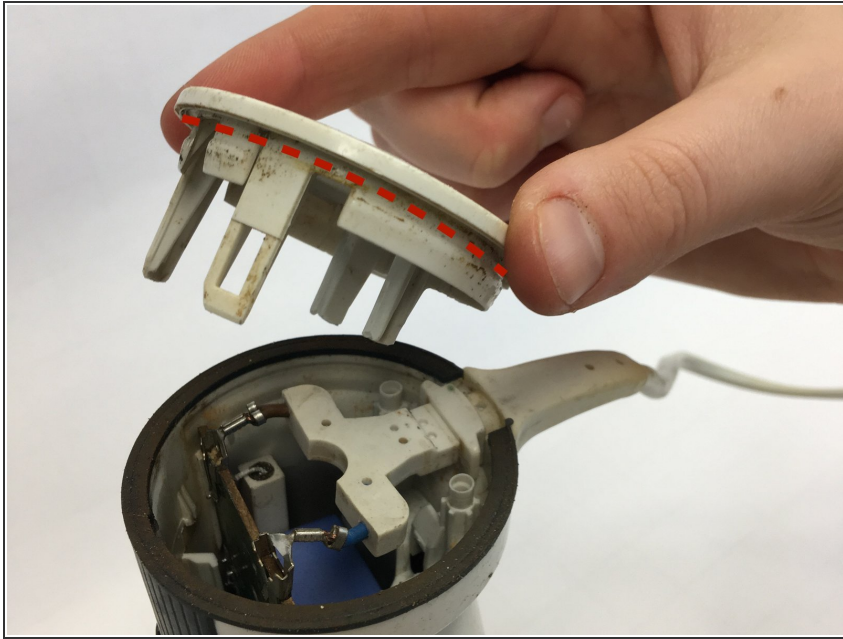
- Before placing the lower part of the housing back in his main body, gently place the super glue around the edge.
- Place back the part immediately after and let it rest for a minimum of 60 seconds.

Stap 12



- Avoid juts by smoothing the (earlier pried) edge on the bottom of the main housing.

Stap 13



- Place super glue on the side of the top cover, below the edge.
- Place the top cover on the housing when all the the inner parts (cord, motor, circuitboard) are in place.
- Let the glue set in approximately 60 seconds.

After disassembling the mixer, the motor can be put out of the main hull and can be replaced. When the circuit board is again attached to the motor and the mixer is put back together it will work again.