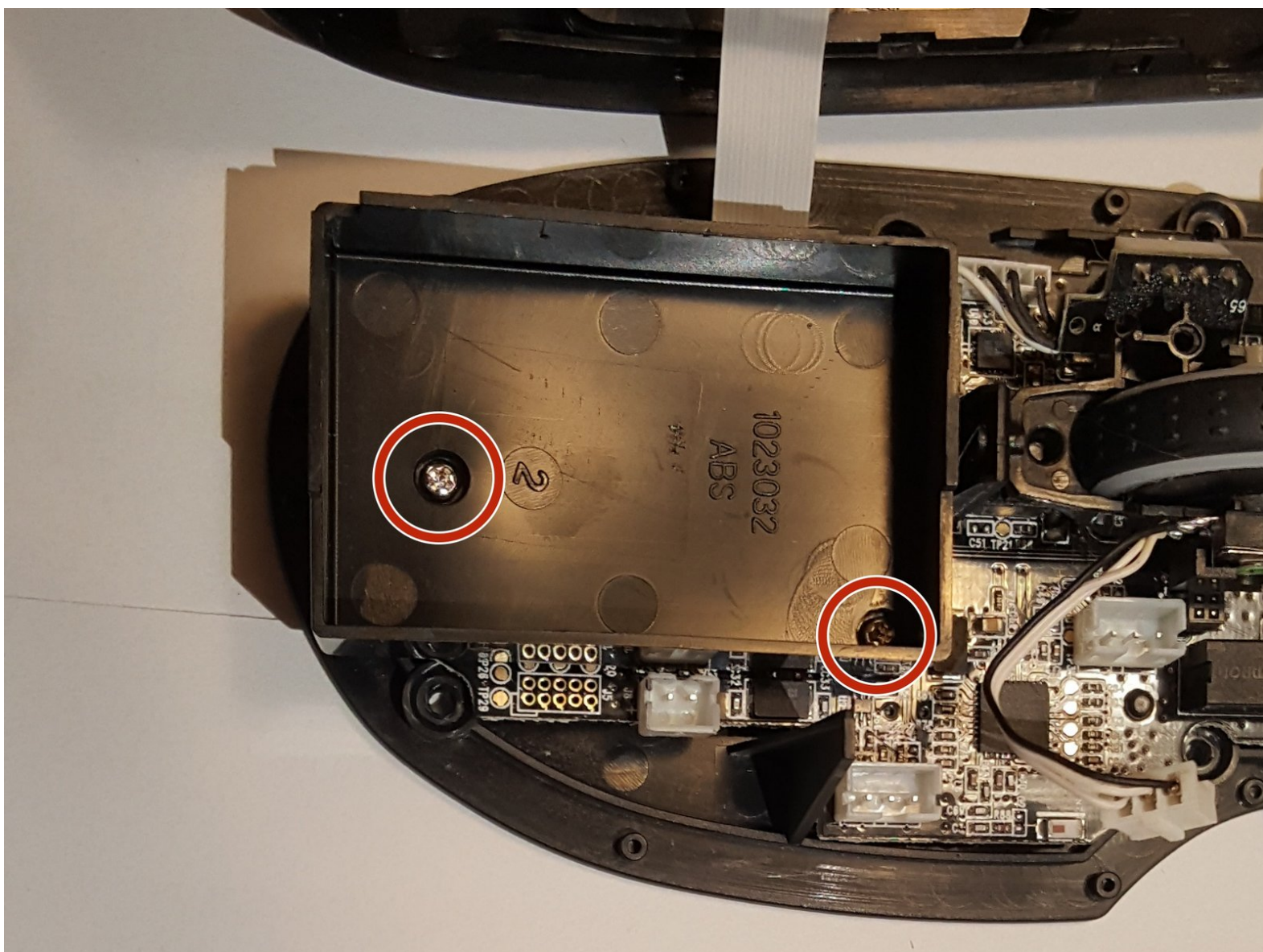




Razer Naga Epic Chroma Side Button Connection Strip Replacement

This guide will show how to replace the connection cable between the side buttons and the circuit board.

Written By: Jordan Morgan





TOOLS:

- [Spudger](#) (1)
 - [Phillips #00 Screwdriver](#) (1)
-

Step 1 — Razer Naga Epic Chroma Disassembly



- Using a spudger, remove the teflon tape on the bottom of the mouse to reveal four screws.

Step 2



- Use a Phillips #00 screwdriver to remove the four screws.

Step 3



- Gently pull on the top plastic plate of the device and carefully unplug the white cord from the circuit board.

⚠ When removing the chassis, carefully unplug the cord connecting to the top mouse buttons.

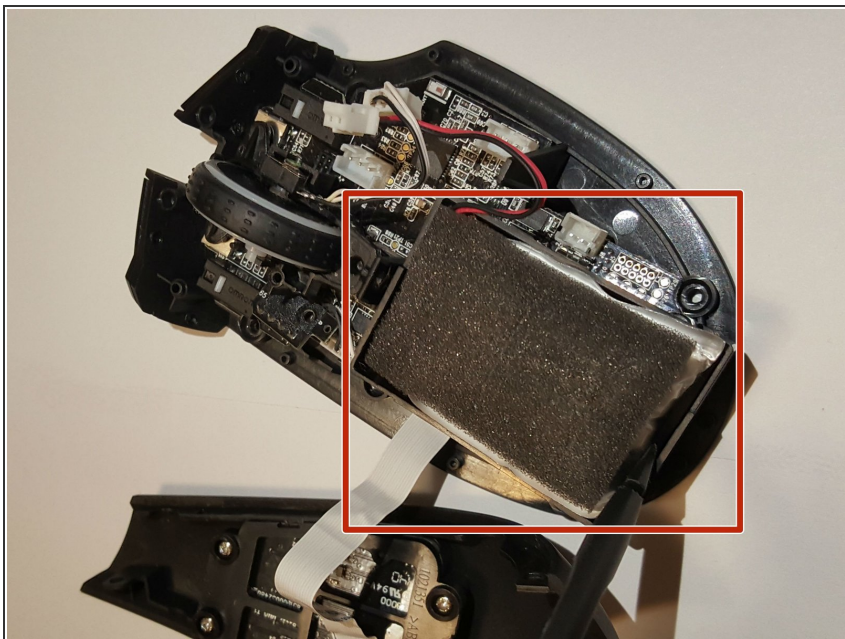
Step 4



- Gently pull up on the right plate on the mouse; separating it.
- Carefully repeat this step for the left side.

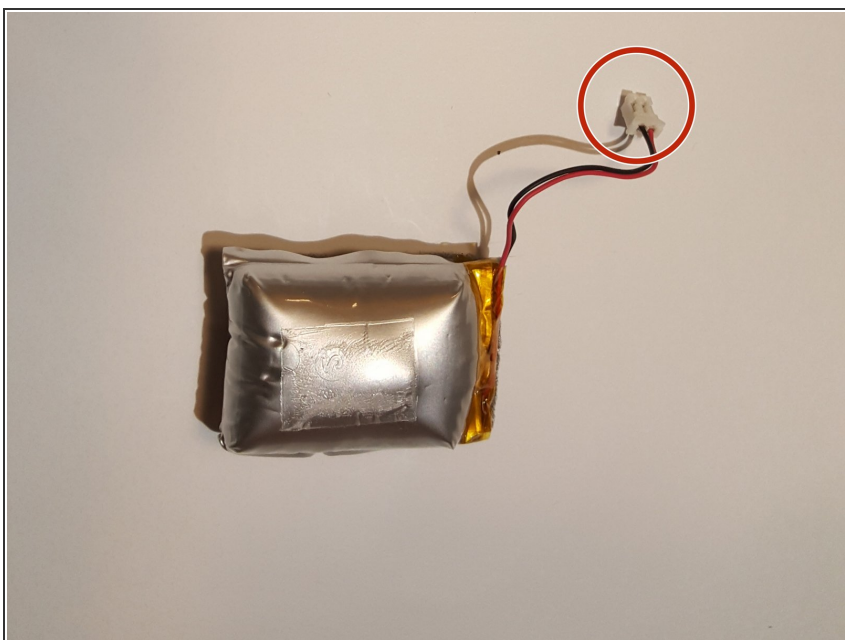
⚠ Be wary of the cable connecting to the twelve mouse buttons located on the left plate. This can be disconnected if needed.

Step 5 — Battery



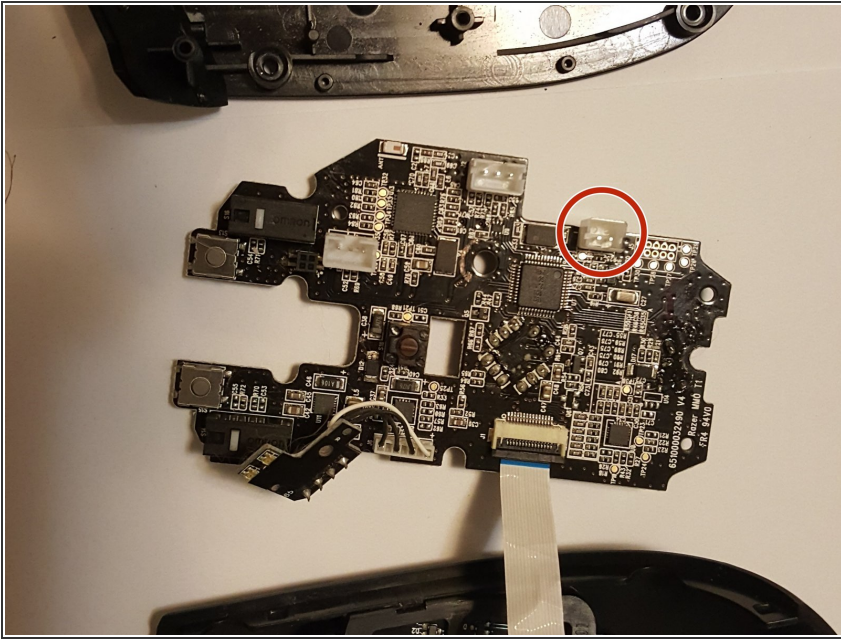
- Take your nylon spudger to gently pry the battery pack from the device.
- Remove the foam on the battery shell for your new battery.

Step 6



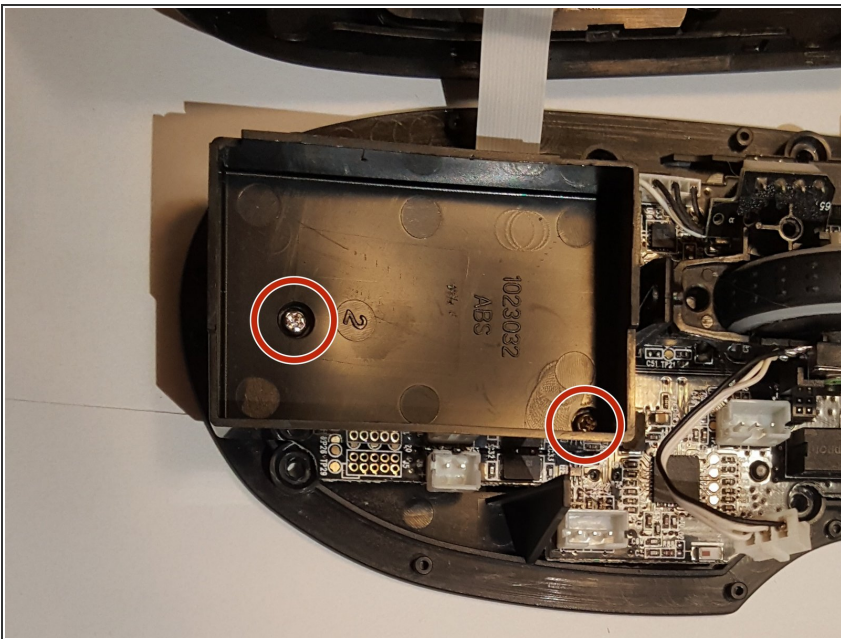
- Unplug the power cord from the circuit board in the mouse.

Step 7



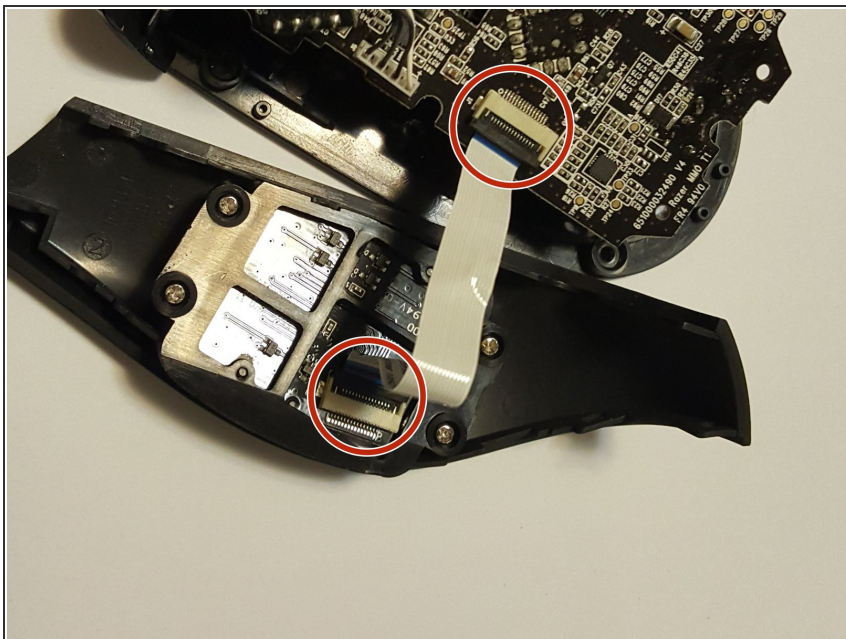
- Plug the cord of the new battery into the socket found in the bottom right of the circuit board.
- Insert the new battery into the battery socket.
- Place the foam on the surface of the new battery (reference Step 5).

Step 8 — Side Button Connection Strip



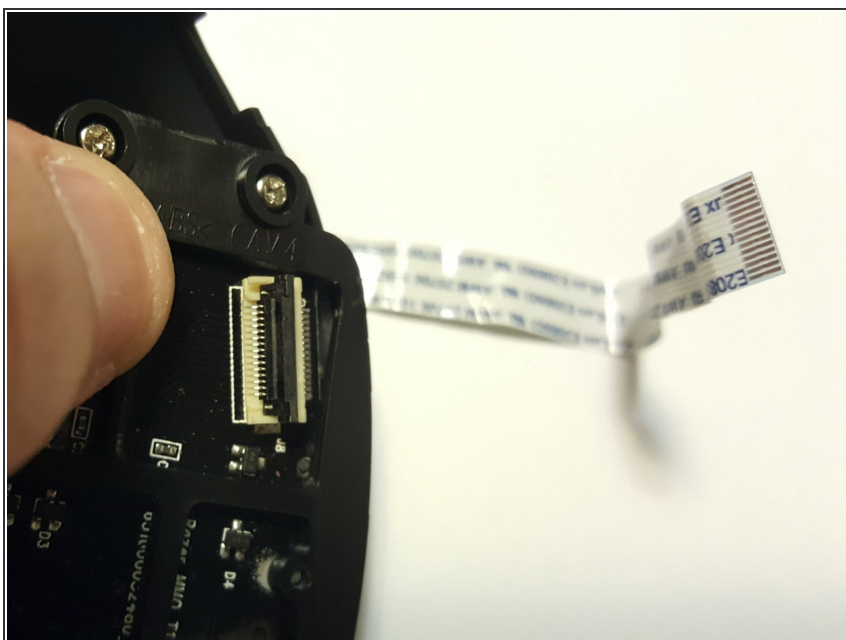
- Under the battery, remove the two screws holding the battery mount in place.
- Remove the battery mount.

Step 9



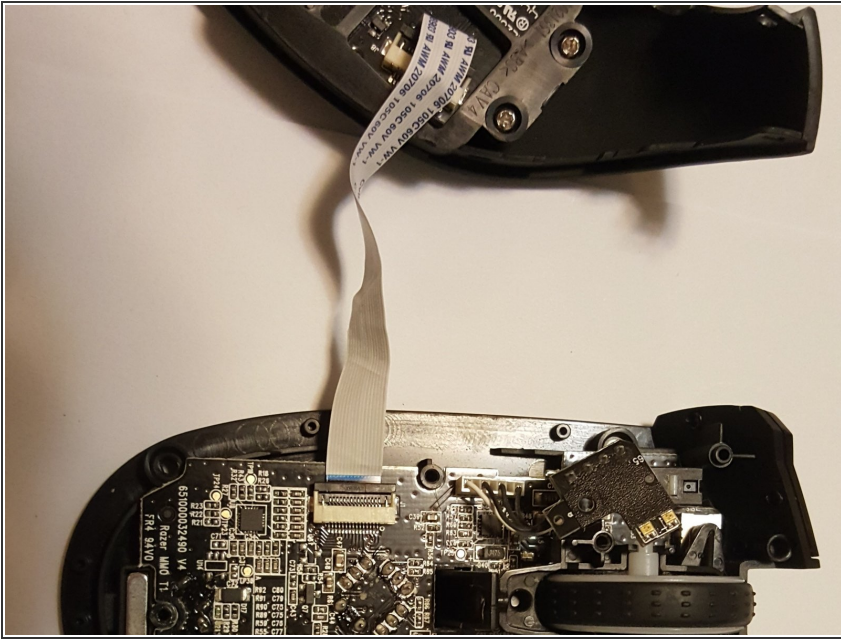
- Flip open the black pieces on either end of the white connection strip holding the side buttons onto the circuit board.

Step 10



- Gently pull the white connection strip out of both connection ports.

Step 11



- Insert the blue stripes of the new white connection strip into both white connection points.
- One connection point is on the plastic plate that has the buttons. The second connection point is where the battery mount was.

To reassemble your device, follow these instructions in reverse order.