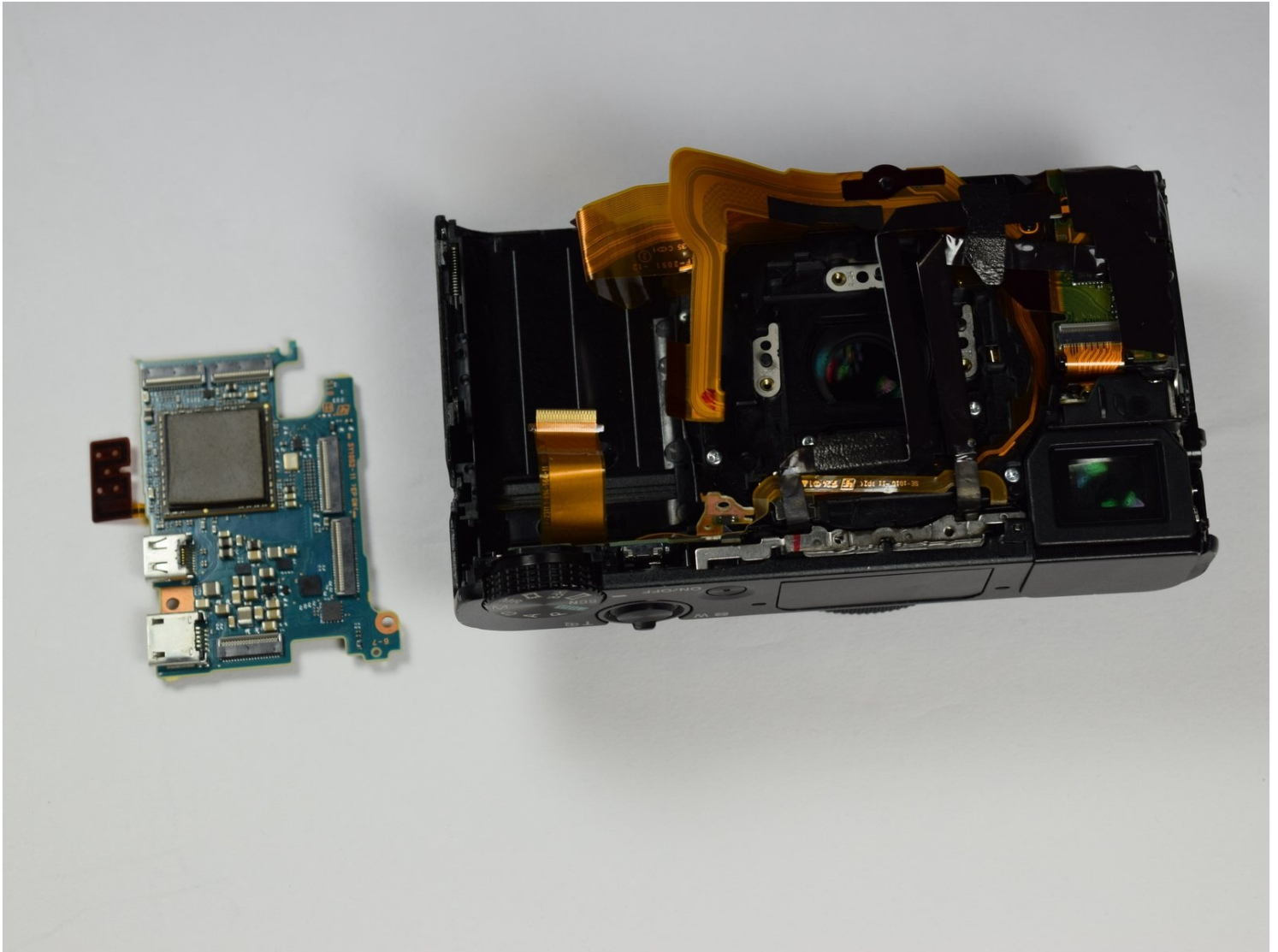




Sony DSC-RX100MA SD Motherboard Replacement

Written By: Isaiah De Leon



TOOLS:

iFixit Opening Tool (1)

Phillips #0 Screwdriver (1)

Tweezers (1)

Step 1 — Back Cover



- Remove battery by sliding the tab to open the cover

Step 2



- Using the screwdriver, remove all screws (black 2.5mm) from outermost layer of the assembly.

 All screws in the camera can be removed with the PH 0 driver head.

Step 3



- Also using the screwdriver, remove screws (black 1mm) underneath articulated LCD screen.
- Remove the marked 2.5 mm screws with the screwdriver

Step 4



- Using the plastic opening tools, carefully pry off the bottom plate.

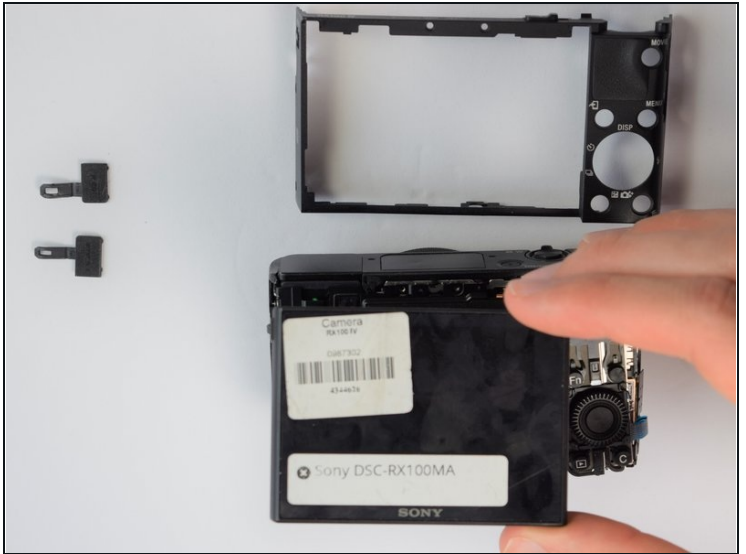
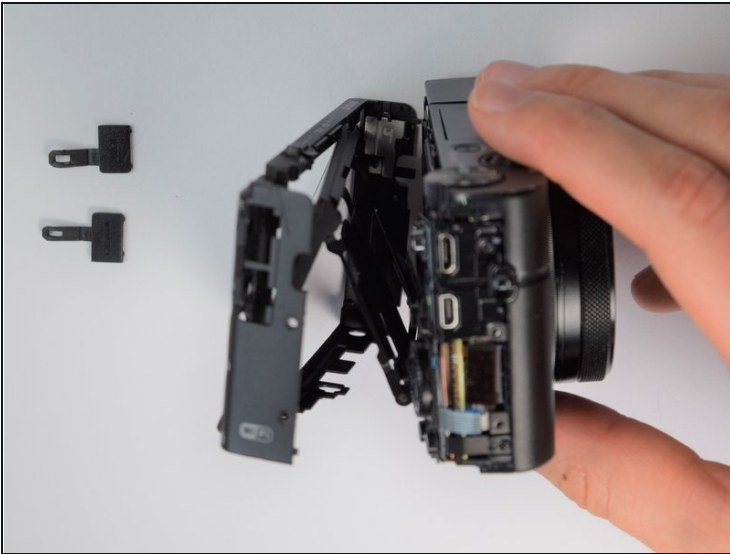
⚠ Do not pull too hard as you may break the plastic casing.

Step 5



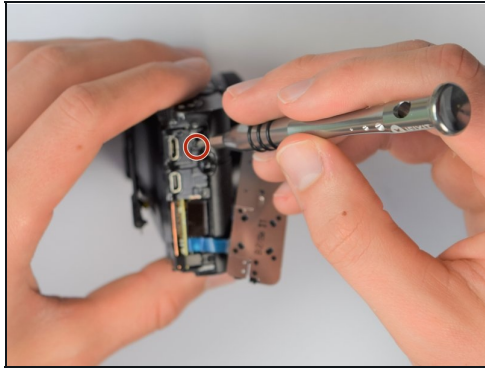
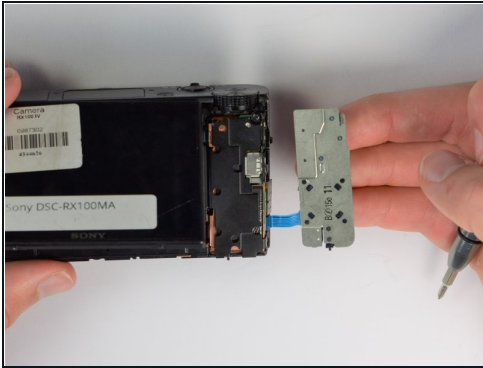
- Using the same plastic opening tools, separate the screen and back assembly from the front portion of the camera
- Once the back assembly is slightly detached, pull the media covers for the HDMI and Multimedia ports

Step 6



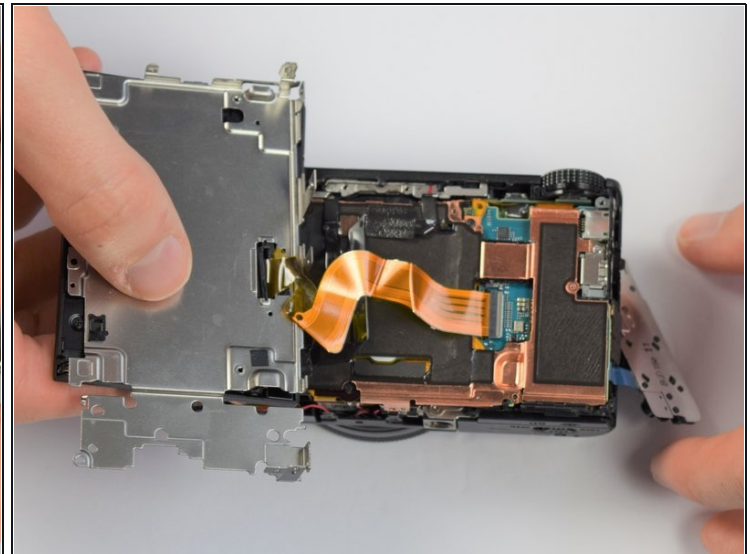
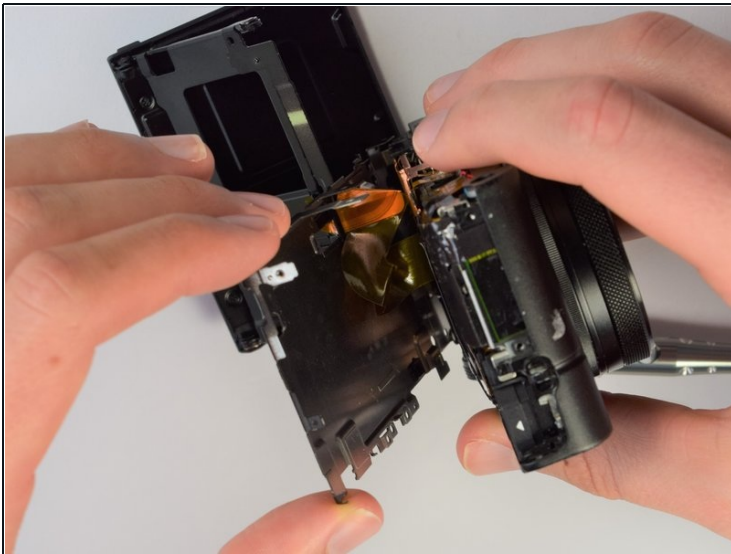
- Remove the back cover

Step 7 — Screen



- Move side panel to get access to screws
- Remove two screws (black 2.5mm) with PH #0 screwdriver

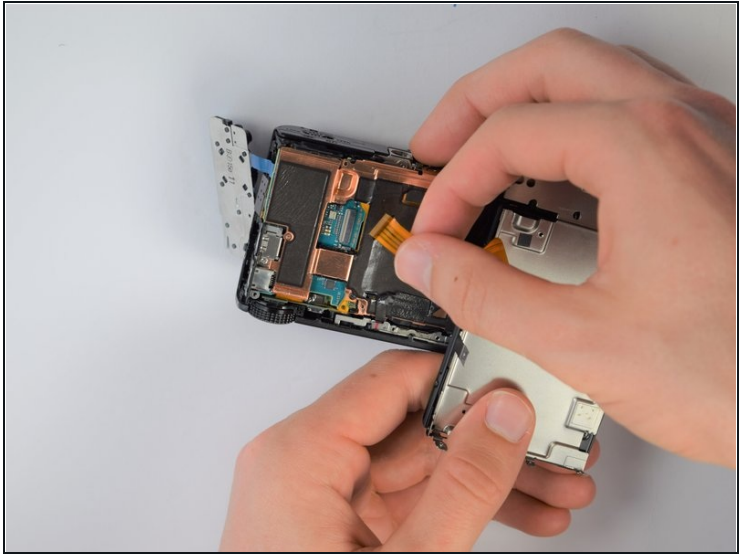
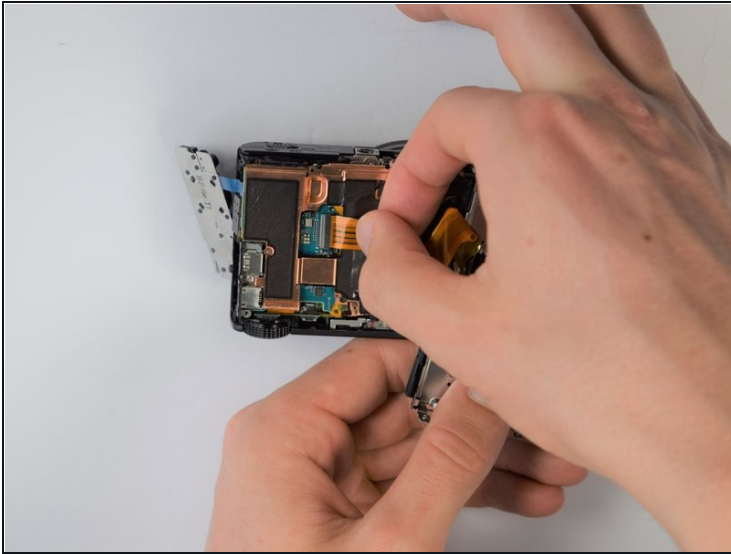
Step 8



- Remove back panel assembly while still keeping ribbon cable attached

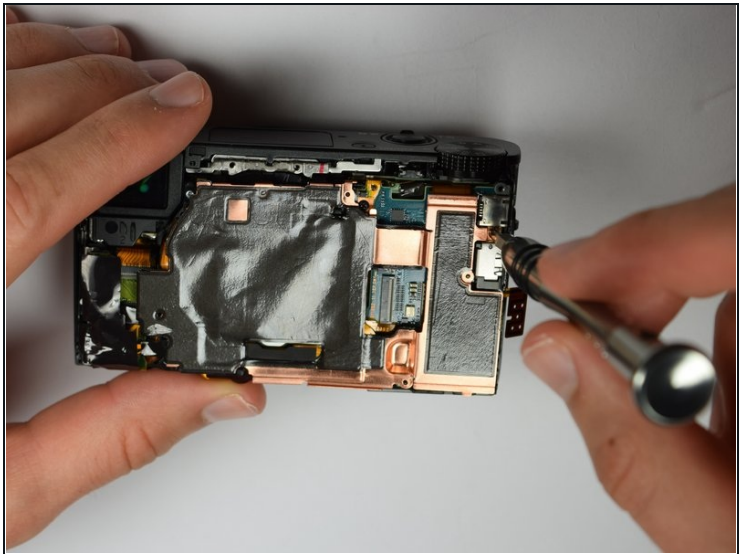
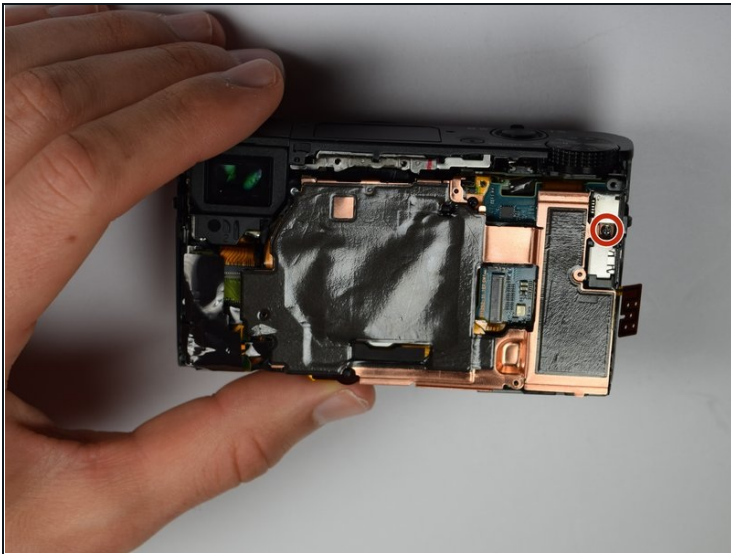
⚠ Be very gentle and care not to tear the gold ribbon cable. This will be a common theme throughout these replacement guides.

Step 9



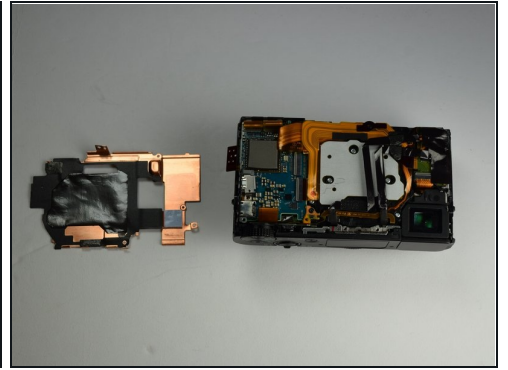
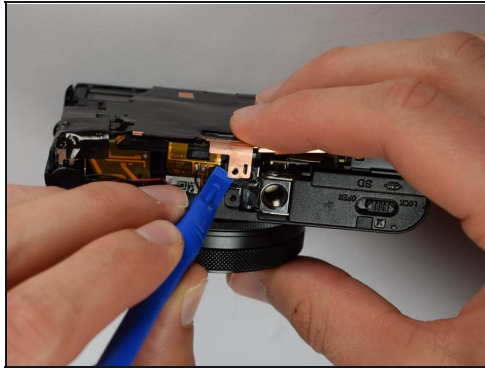
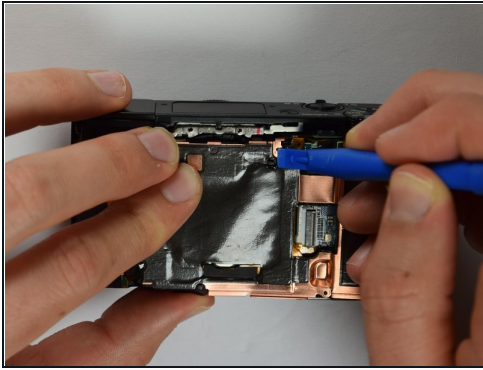
- Carefully unplug ribbon connector to fully detach LCD screen assembly from camera

Step 10 — SD Card Holder



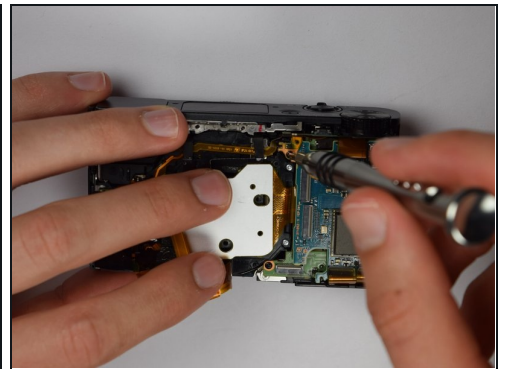
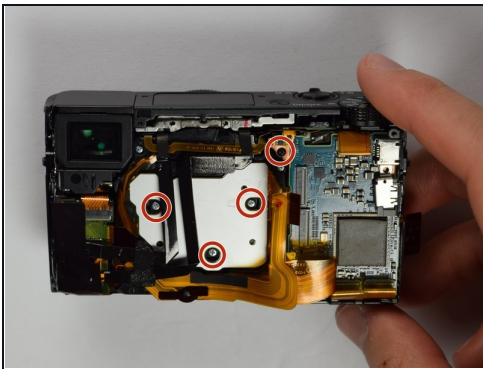
- Remove remaining screw which holds the copper casing in the camera

Step 11



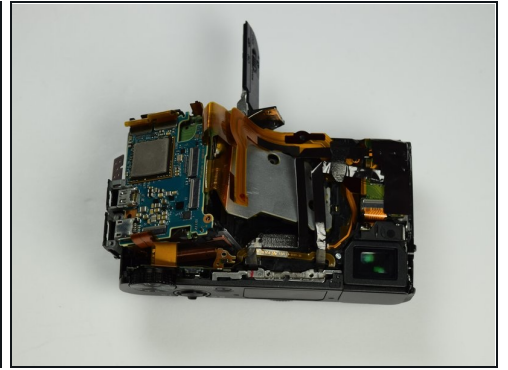
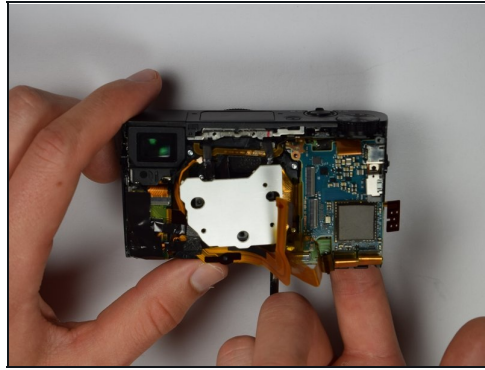
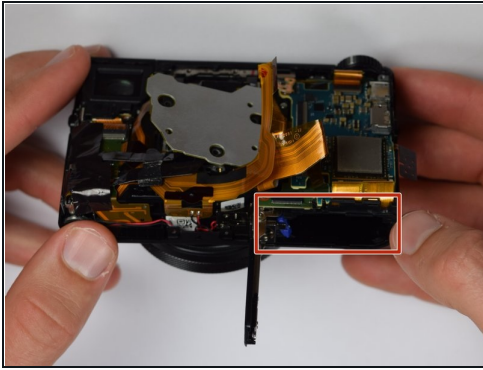
- Using the plastic opening tools, carefully pry off the copper casing at the two pictured points.
- Remove casing

Step 12



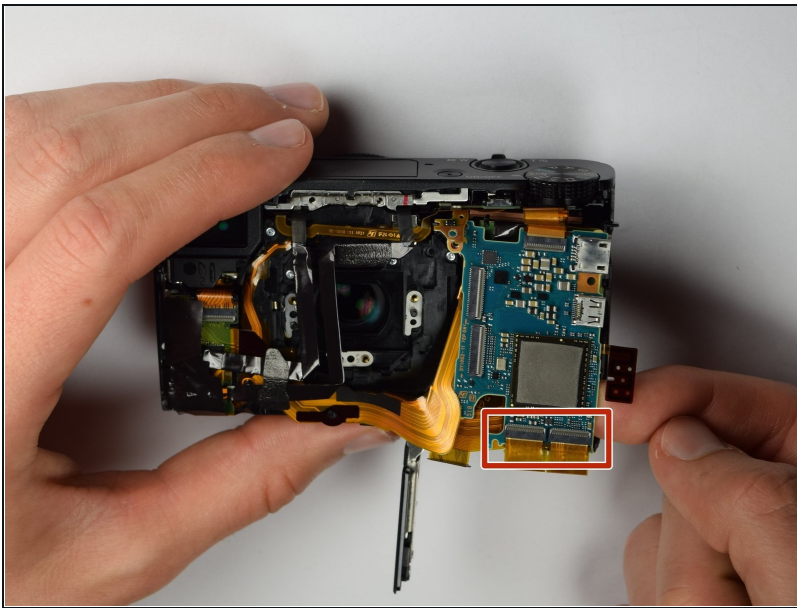
- Using Philips Screwdriver, remove the four screws as marked on the picture

Step 13



- Place your finger into the battery port and push up on the SD card holder to push it out of its socket.
- ① Give it a little wiggle and you should feel the SD card holder come out.

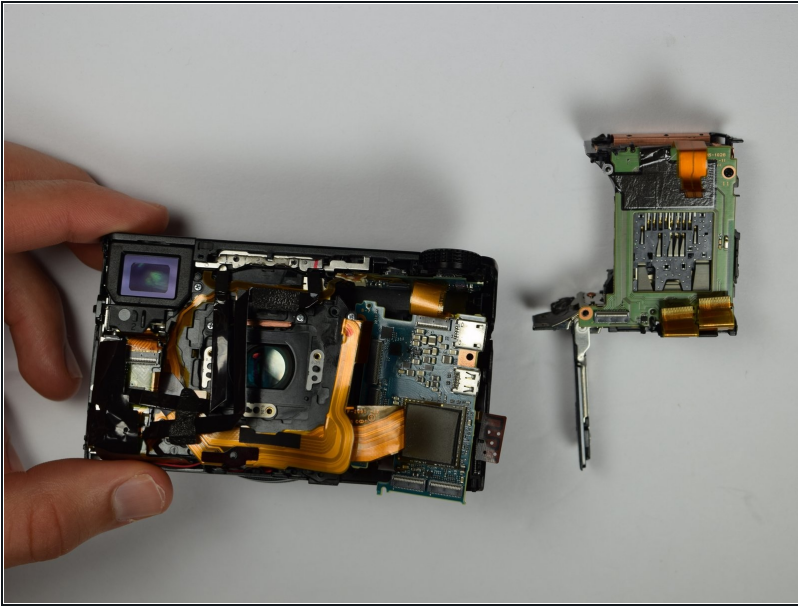
Step 14



- Carefully remove the gold ribbons from the ports of the motherboard by lifting the gray tabs and pulling away the ribbon
- You may want to use [tweezers](#) to remove the gold ribbons as a more delicate and safe approach, but this is not required

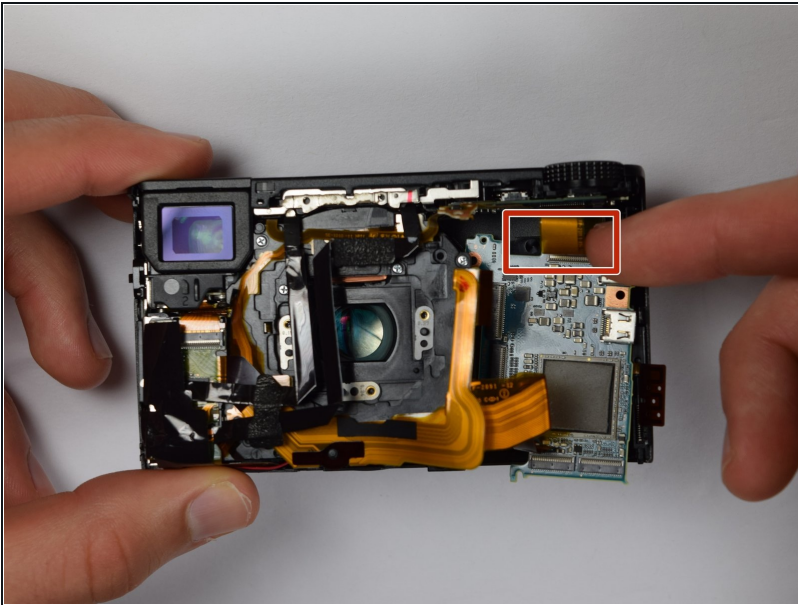
⚠ Do not pull away motherboard too hard as the ribbons are very fragile

Step 15



- Remove the SD card holder. It should easily come out because all of the prerequisite screws were already removed.

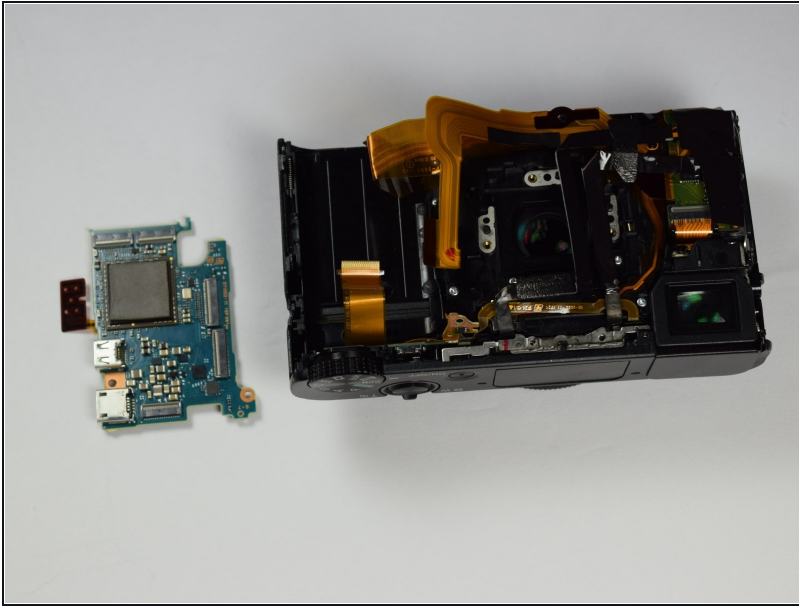
Step 16 — SD Motherboard



- Carefully remove the last gold ribbon by lifting the gray tab and sliding out the ribbon.

⚠ Be sure to use extreme caution because if this ribbon breaks, you will need to buy a new camera.

Step 17



- Viola! The motherboard is now removed and can be replaced with a new one.

To reassemble your device, follow these instructions in reverse order.