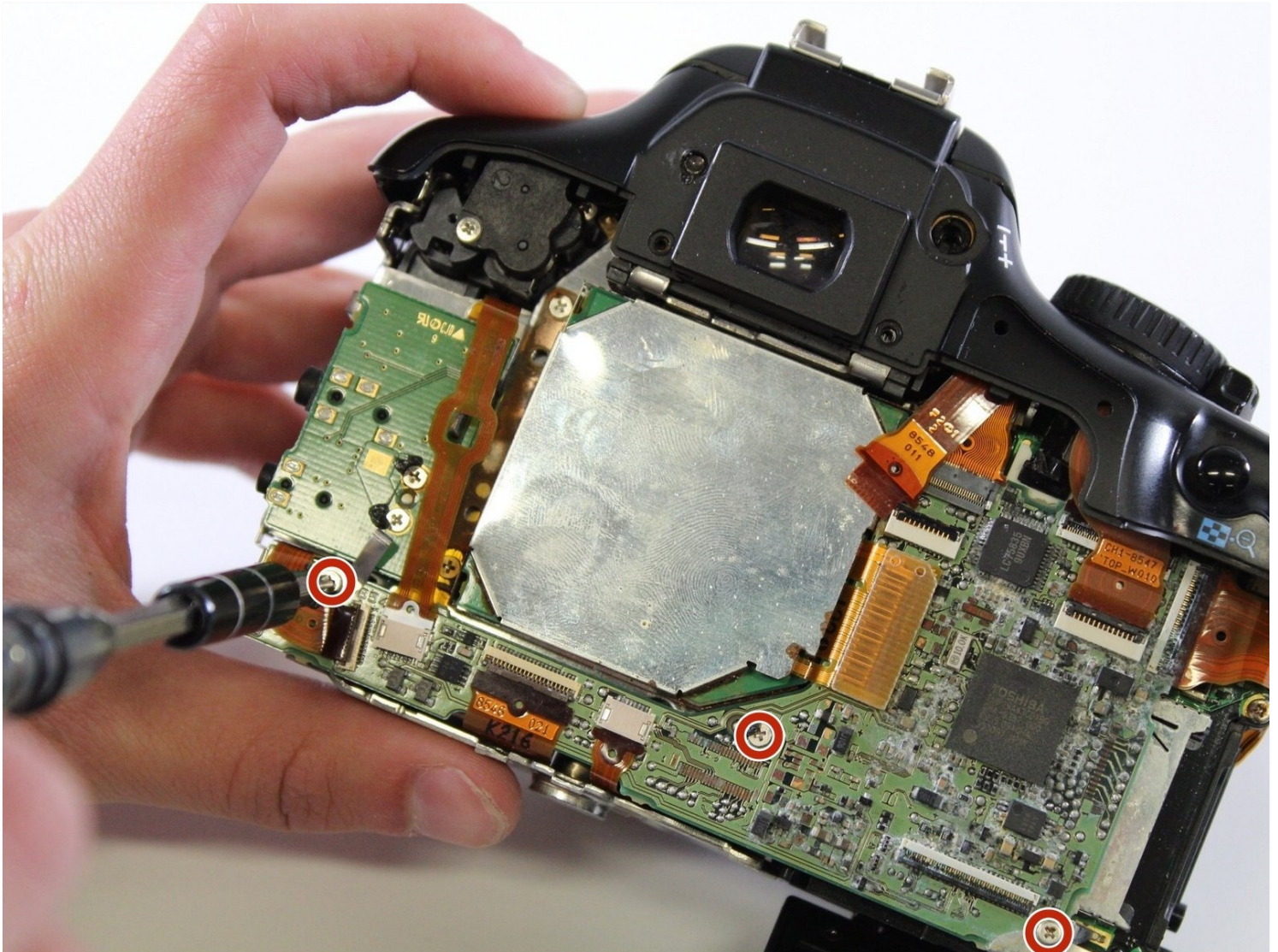




# Canon EOS Rebel XSi Mother Board Replacement

This replacement guide shows how to remove the...

Written By: Erik Mork



# INTRODUCTION

This replacement guide shows how to remove the camera's motherboard, located on the back side of the camera. The motherboard allows all the individual components to communicate; without a functional motherboard, you're just working with some very expensive scrap-metal. Motherboards are not a common point of failure, but if your device has been water damaged, dropped, or otherwise isn't functional, and other component failures have been ruled out, it's time to replace the motherboard.

The back panel must be removed to access this component.

Remove the battery before beginning.

---

## TOOLS:

Phillips #000 Screwdriver (1)

Phillips #00 Screwdriver (1)

Tweezers (1)

---

## Step 1 — Back Panel



- Squeeze the eyepiece between your index finger and thumb and lift up and off.

## Step 2



- Using the PH000 screwdriver head, remove the four 4 mm screws on the bottom of the camera.

## Step 3



- Using the PH000 screwdriver head, remove the two 3mm screws on the right side of the camera (from the LCD screen).

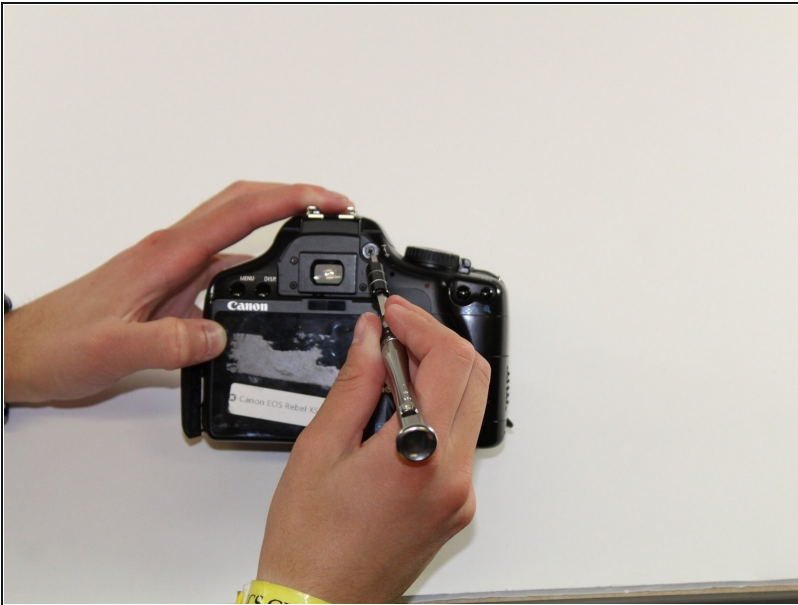


## Step 4



- Remove grip by slowly peeling off.

## Step 5



- Using the PH000 screwdriver, remove the four 4mm screws behind the eyepiece.

## Step 6



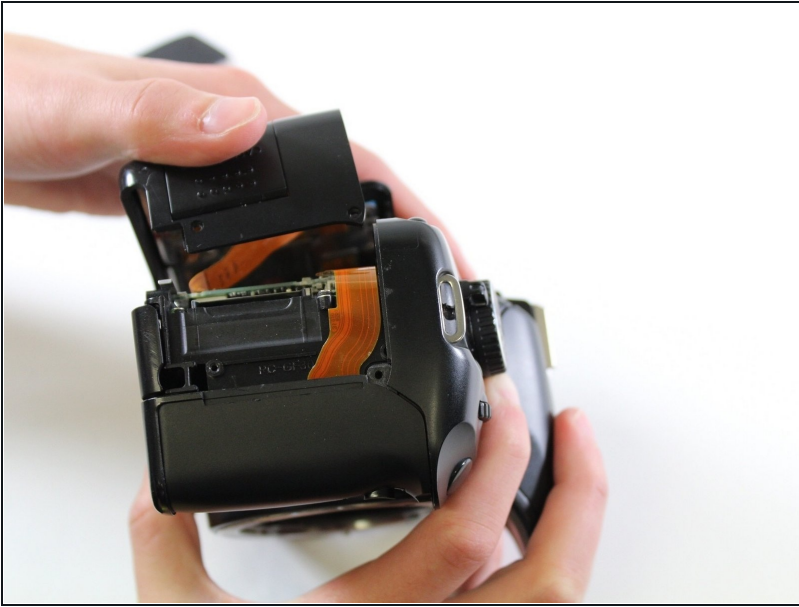
- Using the PH000 screwdriver head, remove one 4 mm screw on the left side of the camera (from the LCD screen).

## Step 7



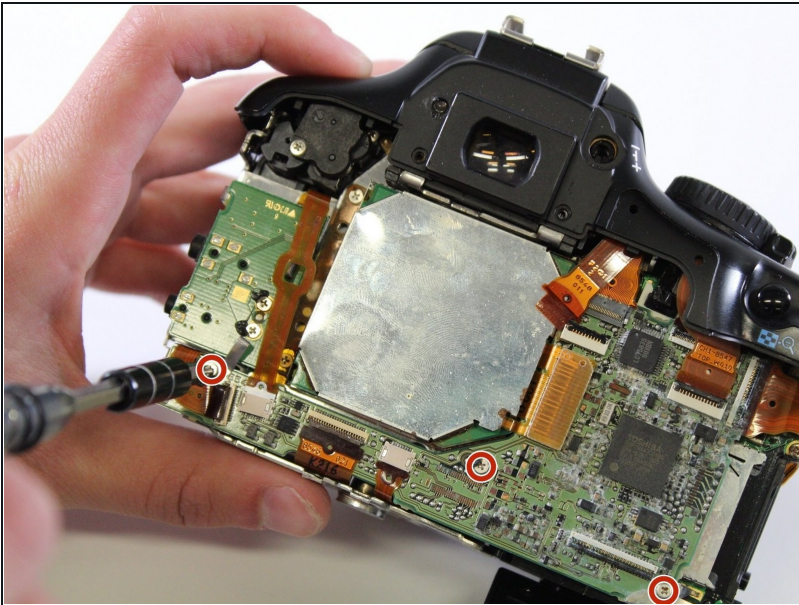
- Remove the side panel by lifting off with fingers.

## Step 8



- Use hands to pry off the back panel.

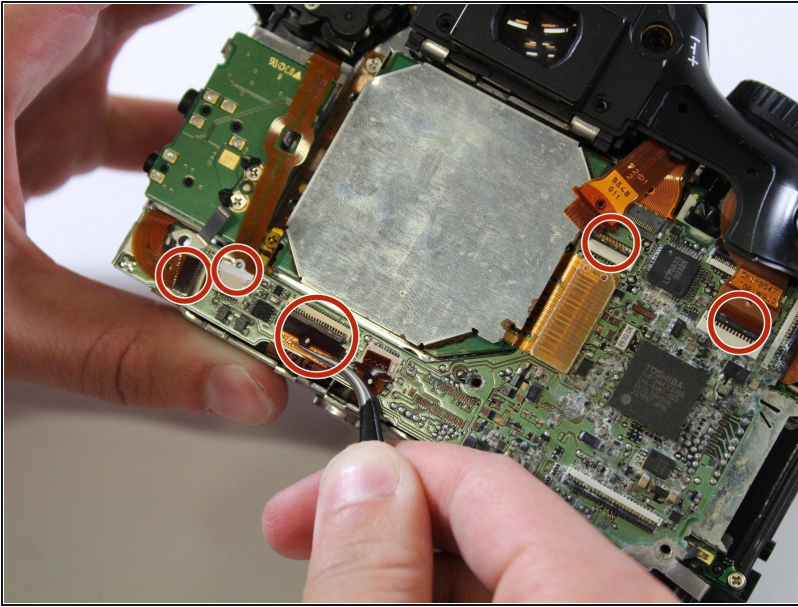
## Step 9 — Mother Board



- Using the PH00 screwdriver head, unscrew the three 3mm screws.



## Step 10



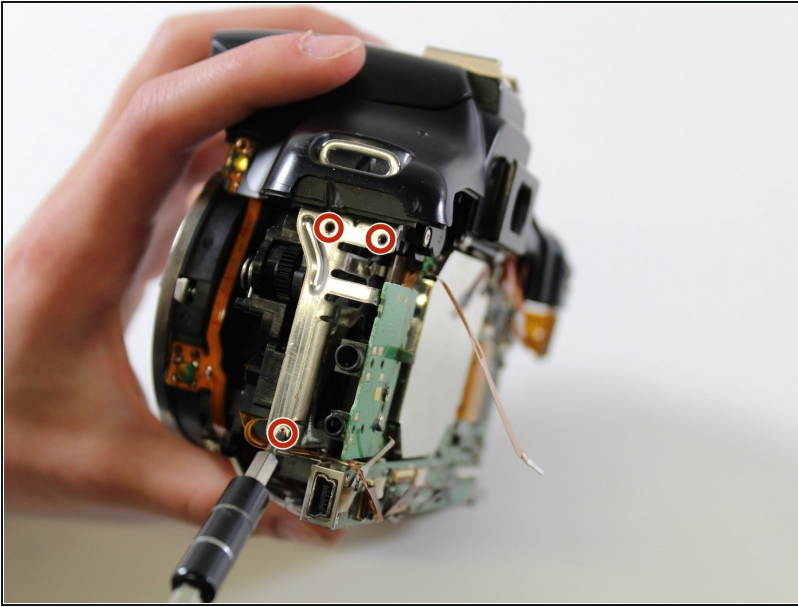
- Disconnect the five cables attached to the motherboard by gently pulling with [tweezers](#).

## Step 11



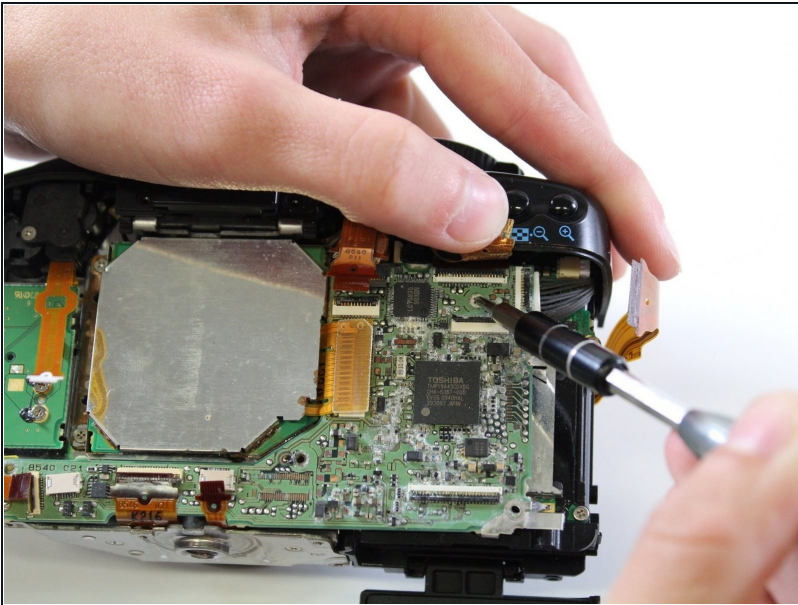
- Remove tab from base by lifting up with finger.

## Step 12



- Using the PH00 screwdriver head, unscrew the three 3mm screws on the left side of the camera.

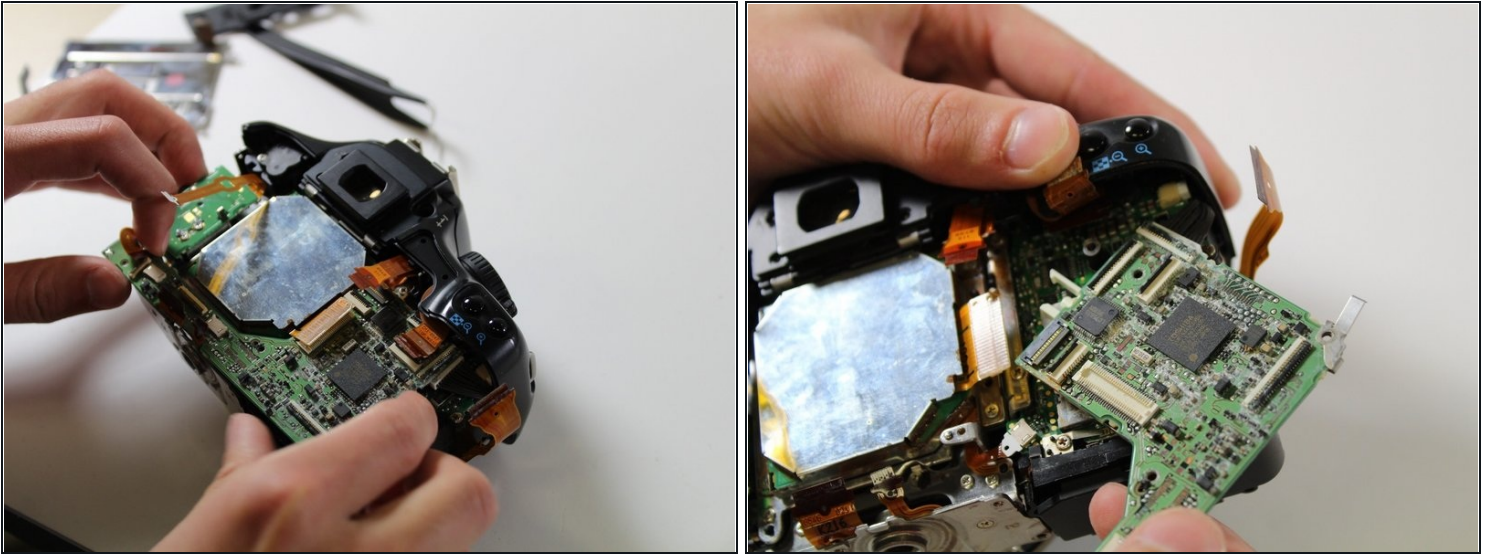
## Step 13



- Using the PH00 screwdriver head, unscrew the last 4mm screw from the motherboard.



## Step 14



- Remove motherboard by gently lifting out with fingers.

---

To reassemble your device, follow these instructions in reverse order.