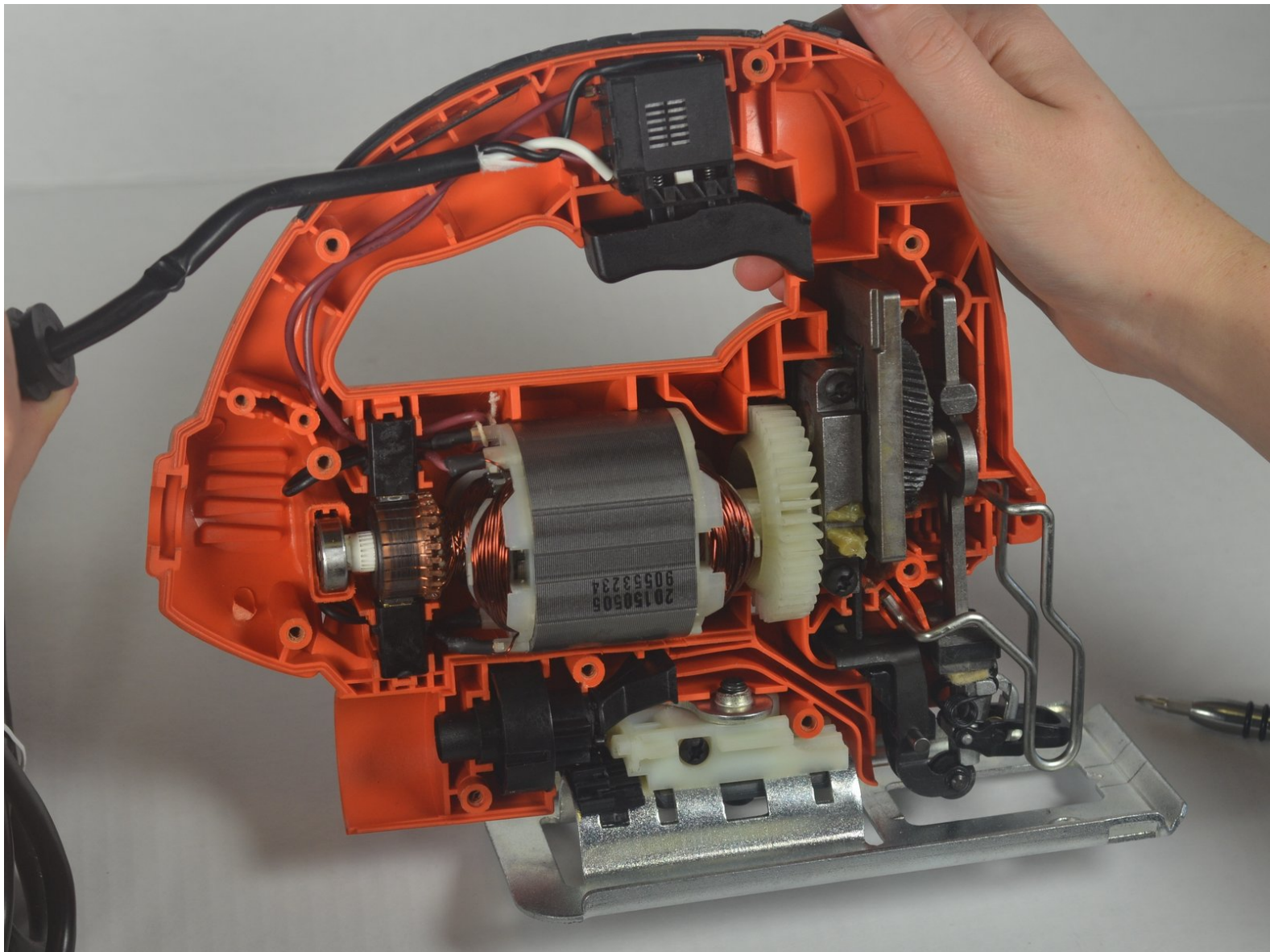




# Housing Disassembly

This guide will show you how to open up your Black and Decker jig saw, and if needed replace the housing.

Written By: matt murray



## INTRODUCTION

In order to replace most parts in this saw, you will first need to remove this housing by unscrewing the nine screws located around the saw. If the housing is either broken or cracked. It can be easily replaced by following the steps below.



### TOOLS:

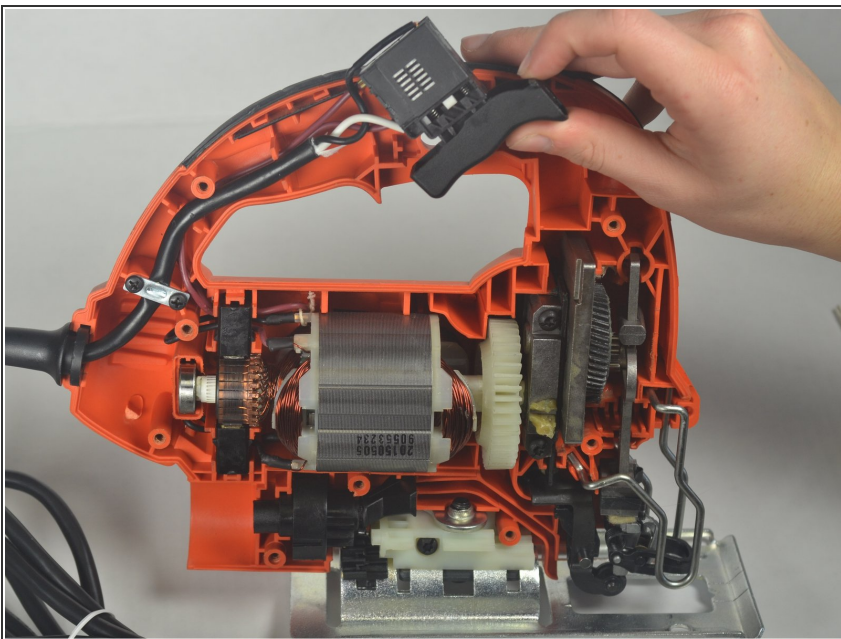
- [T15 Torx Screwdriver](#) (1)
-

## Step 1 — Housing Disassembly



- Remove the nine torx 15.875mm screws on the front of the jigsaw using a T-15 torx screwdriver.

## Step 2



- By separating the two housing halves, carefully remove the top plate.

To reassemble your device, follow these instructions in reverse order.